

Converting Colors

Hex(D83967)

Have a look what the booklet for
Hex(D83967) contains.

Hex(D83967)	3
<i>Conversions</i>	4
<i>Details</i>	6
<i>Harmonies</i>	11
<i>Previews</i>	23
<i>Color Blindness Simulation</i>	26
<i>CSS Examples</i>	29

Color

Hex(D83967)

Conversions

Conversions Part 1

Format	Color
Hex	D83967
RGB	216, 57, 103
RGB Percent	85%, 22%, 40%
CMY	0.1529, 0.7765, 0.5961
CMYK	0.00, 0.74, 0.52, 0.15
HSL	343°, 67%, 54%
HSV	343°, 74%, 85%
XYZ	32.2302, 18.5045, 14.7050
YIQ	109.7850, 79.9980, 48.0140

Conversions

Conversions Part 2

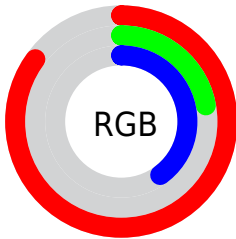
Format	Color
R_{YB}	216, 57, 103
Decimal	14170471
CIE _{Lab}	50.10, 63.74, 11.36
CIE _{LCh}	50, 64.748, 10.103
Yxy	18.5045, 0.4925, 0.2828
Android (android.graphics.Color)	4292360551 (0xFFD83967)
YUV	109.7850, -3.3450, 93.1506
Hunter-Lab	43.0168, 58.4612, 9.8439

Details

The Hex color **D83967** is a dark color, and the websafe version is hex **CC3366**. The color can be described as dark muted rose. A complement of this color would be **39D8AA**, and the grayscale version is **6E6E6E**.

A 20% lighter version of the original color is **FF749A**, and **9B0039** is the 20% darker color. If you saturate the color by 10%, you get **D82358**, and if you desaturate by 10%, it is **D84F76**.

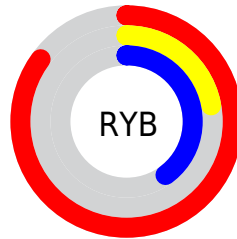
Distribution



Red (85%)

Green (22%)

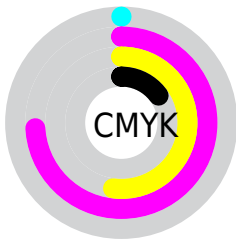
Blue (40%)



Red (85%)

Yellow (22%)

Blue (40%)

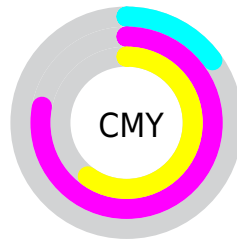


Cyan (0%)

Magenta (74%)

Yellow (52%)

Black (15%)



Cyan (15%)

Magenta (78%)

Yellow (60%)

Brightness & Saturation Gradients

These gradients show how the Hex color D83967 changes by changing the brightness by 10 percent. The first figure shows a shift by +10% for each color and the second figure -10%.

Similar to the brightness gradients but the following saturation gradients show a change of the Hex color D83967 by changing the saturation by 10% instead.

 D83967

 D83967

FFFFFF

 B9114F

 FF749A

 9B0039

 FF91B4

 7D0024

 FFAED0

 5F000E

 FFCBEC

 440003

 FFE8FF

 230001

 000000

 D83967

 D83967

 D82358

 D84F76

 D80E48

 D86486

 D8003E

 D87A95

 D88FA4

 D8A5B4

 D8BBC3

 D8D0D2

 D8E6E2

 D8FBF1

Harmonies

Analogous

The Analogous color harmony consists of three colors that are next to each other on the color wheel.



C6439E



D83967



CD4D32

Triad

The Triadic color harmony groups three colors that are evenly spaced from another and form a triangle on the color wheel.



D83967



408714



0087DF

Complementary

The Complementary color scheme is a pair of colors which are on the opposite of each other on the color wheel.



D83967



39D8AA

Split Complementary

Split-complementary colors differ from the complementary color scheme. The scheme consists of three colors, the original color and two neighbors of the complement color.



008EBD



D83967



008E4F

Square

The Square scheme is like the rectangle color scheme, but the four colors are evenly spaced on the color wheel.



D83967



7F7B00



009089



0078E5

Rectangle

The Rectangle color scheme consists of four colors that form a rectangle on the color wheel.



D83967



BA5E0C



009089



008AD7

Sweetspot

The Sweet Spot groups the original color and five complimentary colors.



D83967



FFC7D7



A839D8



805E68



000000



808080

Same Dimension

The Same Dimension uses a secret algorithm to generate beautiful new colors.



D83967



FF1F60



D85939



6B6063



AB0031



2B000D

Inverse Universe

The Inverse Universe completely reimagines the original color for something new.



D83967



FF1F60



39B8D8



6B6063



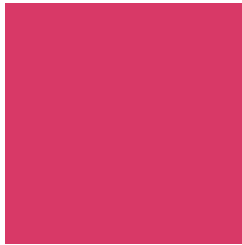
AB0031



2B000D

Previews

White Background



This preview shows how the Hex color D83967 looks on a white background.

Color Contrast Check

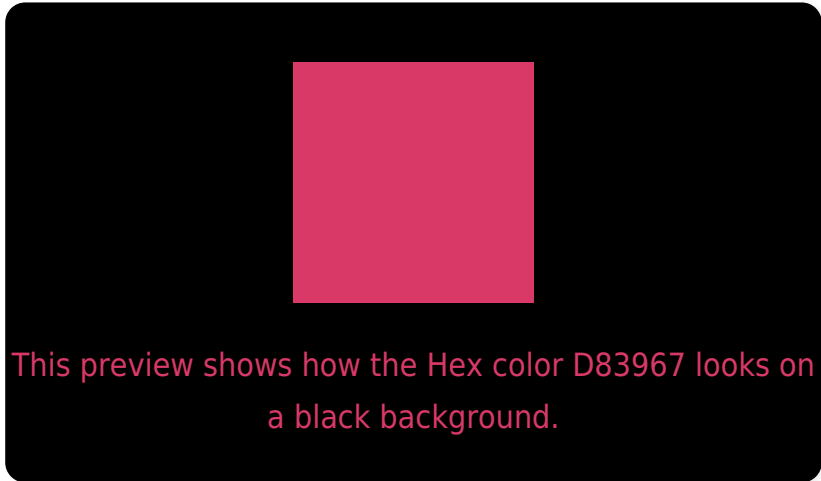
Large Text (above 18pt) WCAG AA ✓ Pass

Any Text WCAG AA ✗ Fail

Large Text (above 18pt) WCAG AAA ✗ Fail

Any Text WCAG AAA ✗ Fail

Black Background



Color Contrast Check

Large Text (above 18pt) WCAG AA ✓ Pass

Any Text WCAG AA ✓ Pass

Large Text (above 18pt) WCAG AAA ✓ Pass

Any Text WCAG AAA × Fail

If you want to check with other color combinations, try the [Color Contrast Checker](#).

Hex D83967 Background



This preview shows how black text looks on a background with the Hex color D83967.



This preview shows how white text looks on a background with the Hex color D83967.

Color Blindness Simulation

Color vision deficiency is a very complex topic, and I could not describe the different causes any better than Wikipedia does, so if you want to learn more, you should check out their [article about color blindness](#).

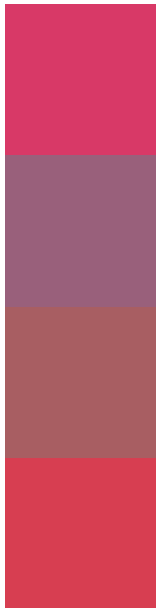
Dichromacy





Tritanopia
D64144

Trichromacy



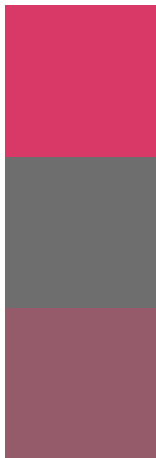
Original Color
D83967

Protanomaly
99607B

Deuteranomaly
A85E62

Tritanomaly
D73E51

Monochromacy



Original Color
D83967

Achromatopsia
6E6E6E

Achromatomaly
955B6B

CSS Examples

Text

The CSS property to change the color of the text to Hex D83967 is called "color". The color property can be set on classes, ids or directly on the HTML element.

This example shows how text in the color #D83967 looks like.

```
.text, #text, p{  
    color:#D83967  
}
```

If you want to add a text shadow in that color use the text-shadow property, you can generate a text shadow directly with our [CSS Text Shadow Generator](#).

Here you see how black text with a 4 pixel #D83967 colored shadow looks like.

```
.shadow{ text-shadow: 4px 4px 2px #D83967
}
```

Border

The CSS property to change the border of an element to Hex D83967 is called "border". The border property can be set on classes, ids or directly on the HTML element.

This example shows the color as border, it can be applied via the CSS property "border" or "border-color".

```
.border, #border, table{ border:4px solid
#D83967 }
```

If only the border color should be changed use the property `border-color`.

```
.border{ border-color:#D83967 }
```

If you want to add a box shadow in that color use:

Here you see how a box with a 4 pixel #D83967 colored shadow looks like.

```
.boxshadow{ -moz-box-shadow:4px 4px 4px  
4px #D83967; -webkit-box-shadow:4px 4px  
4px 4px #D83967; box-shadow:4px 4px 4px  
4px #D83967 }
```

Background

The CSS property to change the background color of an element to Hex D83967 is called "background". The background property can be set on classes, ids or directly on the HTML element.

```
.background, #background, body{  
background:#D83967 }
```

If only the background color should be changed can be used:

```
.background{ background-color:#D83967 }
```

This example shows the color as background, it is applied via the CSS property "background".

To optimize and compress your CSS code, you can use our [online CSS compressor and optimizer](#) based on csstidy. If you want to create a linear or radial gradient as background or border, check our [CSS Gradient Generator](#).

Hey! You found this booklet interesting? Support Converting Colors with the new Membership Option!

The pro membership hides all ads, plus gives you double the colors in the color bucket, and more awesome pro features!

[Learn more, Memberships starting at \\$2.50/m!](#)

**Follow me
on Twitter!**

@ConvertingColor