

# Converting Colors

Hex(D84B7A)

Have a look what the booklet for  
Hex(D84B7A) contains.

<b>Hex(D84B7A)</b> .....	3
<i><b>Conversions</b></i> .....	4
<i><b>Details</b></i> .....	6
<i><b>Harmonies</b></i> .....	11
<i><b>Previews</b></i> .....	23
<i><b>Color Blindness Simulation</b></i> .....	26
<i><b>CSS Examples</b></i> .....	29

# Color

**Hex(D84B7A)**

# Conversions

## Conversions Part 1

<b>Format</b>	<b>Color</b>
Hex	D84B7A
RGB	216, 75, 122
RGB Percent	85%, 29%, 48%
CMY	0.1529, 0.7059, 0.5216
CMYK	0.00, 0.65, 0.44, 0.15
HSL	340°, 64%, 57%
HSV	340°, 65%, 85%
XYZ	34.3478, 21.0362, 20.6624
YIQ	122.5170, 68.9490, 44.5090

# Conversions

## Conversions Part 2

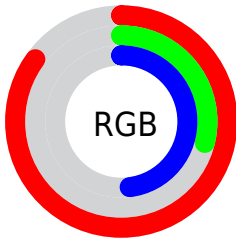
<b>Format</b>	<b>Color</b>
<b>R<sub>YB</sub></b>	216, 75, 122
Decimal	14175098
CIE Lab	52.99, 58.78, 4.02
CIE LCh	53, 58.913, 3.909
Yxy	21.0362, 0.4517, 0.2766
Android (android.graphics.Color)	4292365178 (0xFFD84B7A)
YUV	122.5170, -0.2549, 81.9846
Hunter-Lab	45.8653, 53.4118, 5.3954

# Details

The Hex color **D84B7A** is a dark color, and the websafe version is hex **CC3366**. The color can be described as middle muted rose. A complement of this color would be **4BD8A9**, and the grayscale version is **7A7A7A**.

A 20% lighter version of the original color is **FF83AE**, and **9C004A** is the 20% darker color. If you saturate the color by 10%, you get **D8356C**, and if you desaturate by 10%, it is **D86188**.

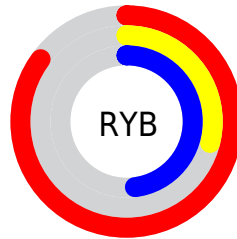
# Distribution



Red (85%)

Green (29%)

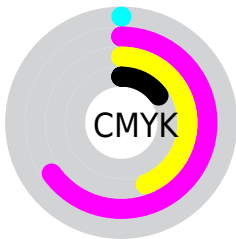
Blue (48%)



Red (85%)

Yellow (29%)

Blue (48%)

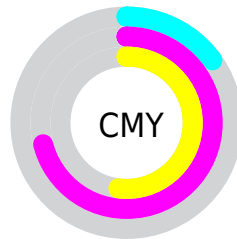


Cyan (0%)

Magenta (65%)

Yellow (44%)

Black (15%)



Cyan (15%)

Magenta (71%)

Yellow (52%)

# Brightness & Saturation Gradients

These gradients show how the Hex color D84B7A changes by changing the brightness by 10 percent. The first figure shows a shift by +10% for each color and the second figure -10%.

Similar to the brightness gradients but the following saturation gradients show a change of the Hex color D84B7A by changing the saturation by 10% instead.



 D84B7A

 D84B7A

FFFFFF

 BA2D61

 FF83AE

 9C004A

 FF9FCA

 7F0033

 FFBCE6

 62001F

 FFD9FF

 470004

 FFF7FF

 290001

 000000

 D84B7A

 D84B7A

 D8356C

 D86188

 D8205D

 D87697

 D80A4F

 D88CA5

 D80048

 D8A1B4

 D8B7C2

 D8CDD0

 D8E2DF

 D8F8ED

 D8FFFC

# Harmonies

## Analogous

The Analogous color harmony consists of three colors that are next to each other on the color wheel.



C057AC



D84B7A



D45649

# Triad

The Triadic color harmony groups three colors that are evenly spaced from another and form a triangle on the color wheel.



D84B7A



5D8B20



008FD9

# Complementary

The Complementary color scheme is a pair of colors which are on the opposite of each other on the color wheel.



D84B7A



4BD8A9

# Split Complementary

Split-complementary colors differ from the complementary color scheme. The scheme consists of three colors, the original color and two neighbors of the complement color.



0095B6



D84B7A



00934F

# Square

The Square scheme is like the rectangle color scheme, but the four colors are evenly spaced on the color wheel.



D84B7A



917E00



009684



0082E4

# Rectangle

The Rectangle color scheme consists of four colors that form a rectangle on the color wheel.



D84B7A



C4642C



009684



0092D0



# Sweetspot

The Sweet Spot groups the original color and five complimentary colors.



D84B7A



FFCCDD



A94BD8



80616B



000000



808080



# Same Dimension

The Same Dimension uses a secret algorithm to generate beautiful new colors.



D84B7A



FF387A



D8624B



6B6064



AB0039



2B000E



# Inverse Universe

The Inverse Universe completely reimagines the original color for something new.



D84B7A



FF387A



4BC0D8



6B6064



AB0039

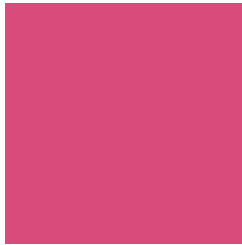


2B000E



# Previews

## White Background



This preview shows how the Hex color D84B7A looks on a white background.

## Color Contrast Check

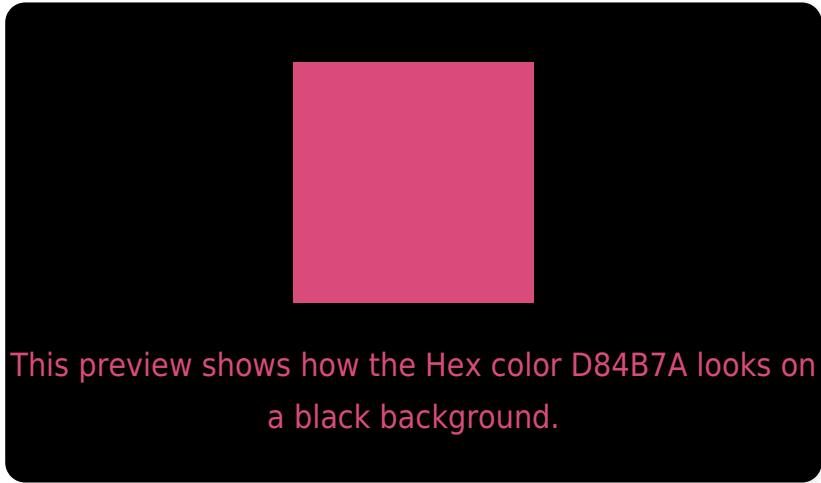
Large Text (above 18pt) WCAG AA ✓ Pass

Any Text WCAG AA × Fail

Large Text (above 18pt) WCAG AAA × Fail

Any Text WCAG AAA × Fail

# Black Background



## Color Contrast Check

Large Text (above 18pt) WCAG AA ✓ Pass

Any Text WCAG AA ✓ Pass

Large Text (above 18pt) WCAG AAA ✓ Pass

Any Text WCAG AAA × Fail

If you want to check with other color combinations, try the [Color Contrast Checker](#).



## Hex D84B7A Background



This preview shows how black text looks on a background with the Hex color D84B7A.



This preview shows how white text looks on a background with the Hex color D84B7A.

# Color Blindness Simulation

Color vision deficiency is a very complex topic, and I could not describe the different causes any better than Wikipedia does, so if you want to learn more, you should check out their [article about color blindness](#).

## Dichromacy



**Original Color**  
D84B7A

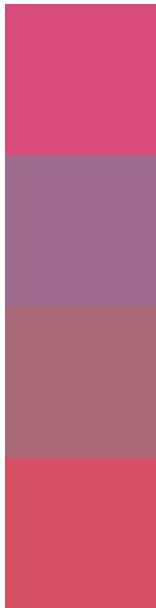
**Protanopia**  
7A7E98

**Deuteranopia**  
907A73



**Tritanopia**  
D65257

# Trichromacy



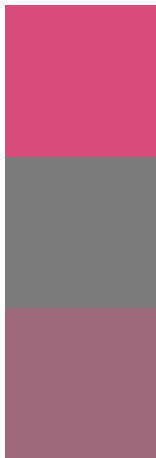
**Original Color**  
D84B7A

**Protanomaly**  
9C6B8D

**Deuteranomaly**  
AA6976

**Tritanomaly**  
D74F64

# Monochromacy



**Original Color**  
D84B7A

**Achromatopsia**  
7B7B7B

**Achromatomaly**  
9D6A7B

# CSS Examples

## Text

The CSS property to change the color of the text to Hex D84B7A is called "color". The color property can be set on classes, ids or directly on the HTML element.

This example shows how text in the color #D84B7A looks like.

```
.text, #text, p{  
    color:#D84B7A  
}
```

If you want to add a text shadow in that color use the text-shadow property, you can generate a text shadow directly with our [CSS Text Shadow Generator](#).

Here you see how black text with a 4 pixel #D84B7A colored shadow looks like.

```
.shadow{ text-shadow: 4px 4px 2px #D84B7A
}
```

## Border

The CSS property to change the border of an element to Hex D84B7A is called "border". The border property can be set on classes, ids or directly on the HTML element.

This example shows the color as border, it can be applied via the CSS property "border" or "border-color".

```
.border, #border, table{ border:4px solid
#D84B7A }
```

If only the border color should be changed use the property `border-color`.

```
.border{ border-color:#D84B7A }
```

If you want to add a box shadow in that color use:

Here you see how a box with a 4 pixel #D84B7A colored shadow looks like.

```
.boxshadow{ -moz-box-shadow:4px 4px 4px  
4px #D84B7A; -webkit-box-shadow:4px 4px  
4px 4px #D84B7A; box-shadow:4px 4px 4px  
4px #D84B7A }
```

# Background

The CSS property to change the background color of an element to Hex D84B7A is called "background". The background property can be set on classes, ids or directly on the HTML element.

```
.background, #background, body{  
background:#D84B7A }
```

If only the background color should be changed can be used:

```
.background{ background-color:#D84B7A }
```

This example shows the color as background, it is applied via the CSS property "background".

To optimize and compress your CSS code, you can use our [online CSS compressor and optimizer](#) based on csstidy. If you want to create a linear or radial gradient as background or border, check our [CSS Gradient Generator](#).



Hey! You found this booklet interesting? Support Converting Colors with the new Membership Option!

The pro membership hides all ads, plus gives you double the colors in the color bucket, and more awesome pro features!

**[Learn more, Memberships starting at \\$2.50/m!](#)**

**Follow me  
on Twitter!**

@ConvertingColor