

Converting Colors

Hex(D84C7D)

Have a look what the booklet for
Hex(D84C7D) contains.

Hex(D84C7D)	3
<i>Conversions</i>	4
<i>Details</i>	6
<i>Harmonies</i>	11
<i>Previews</i>	23
<i>Color Blindness Simulation</i>	26
<i>CSS Examples</i>	29

Color

Hex(D84C7D)

Conversions

Conversions Part 1

Format	Color
Hex	D84C7D
RGB	216, 76, 125
RGB Percent	85%, 30%, 49%
CMY	0.1529, 0.7020, 0.5098
CMYK	0.00, 0.65, 0.42, 0.15
HSL	339°, 64%, 57%
HSV	339°, 65%, 85%
XYZ	34.6050, 21.2485, 21.6795
YIQ	123.4460, 67.7110, 44.9190

Conversions

Conversions Part 2

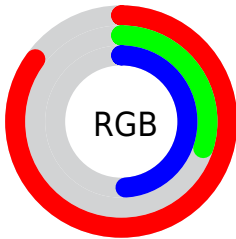
Format	Color
R_{YB}	216, 76, 125
Decimal	14175357
CIE _{Lab}	53.22, 58.67, 2.56
CIE _{LCh}	53, 58.721, 2.498
Yxy	21.2485, 0.4463, 0.2741
Android (android.graphics.Color)	4292365437 (0xFFD84C7D)
YUV	123.4460, 0.7661, 81.1699
Hunter-Lab	46.0961, 53.3345, 4.3825

Details

The Hex color **D84C7D** is a dark color, and the websafe version is hex **CC3366**. The color can be described as middle muted rose. A complement of this color would be **4CD8A7**, and the grayscale version is **7B7B7B**.

A 20% lighter version of the original color is **FF84B1**, and **9C004C** is the 20% darker color. If you saturate the color by 10%, you get **D8366F**, and if you desaturate by 10%, it is **D8628B**.

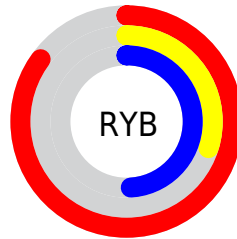
Distribution



Red (85%)

Green (30%)

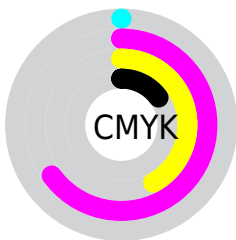
Blue (49%)



Red (85%)

Yellow (30%)

Blue (49%)

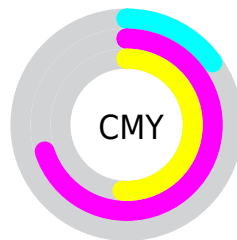


Cyan (0%)

Magenta (65%)

Yellow (42%)

Black (15%)



Cyan (15%)

Magenta (70%)

Yellow (51%)

Brightness & Saturation Gradients

These gradients show how the Hex color D84C7D changes by changing the brightness by 10 percent. The first figure shows a shift by +10% for each color and the second figure -10%.

Similar to the brightness gradients but the following saturation gradients show a change of the Hex color D84C7D by changing the saturation by 10% instead.

 D84C7D

 D84C7D

FFFFFF

 BA2E64

 FF84B1

 9C004C

 FFA0CD

 7F0036

 FFBDE9

 620021

 FFDAFF

 470009

 FFF7FF

 2A0001

 000000

 D84C7D

 D84C7D

 D8366F

 D8628B

 D82161

 D87799

 D80B53

 D88DA7

 D8004C

 D8A2B5

 D8B8C3

 D8CED1

 D8E3DF

 D8F9ED

 D8FFFB

Harmonies

Analogous

The Analogous color harmony consists of three colors that are next to each other on the color wheel.



BF59AF



D84C7D



D5564C

Triad

The Triadic color harmony groups three colors that are evenly spaced from another and form a triangle on the color wheel.



D84C7D



618C1F



0090D8

Complementary

The Complementary color scheme is a pair of colors which are on the opposite of each other on the color wheel.



D84C7D



4CD8A7

Split Complementary

Split-complementary colors differ from the complementary color scheme. The scheme consists of three colors, the original color and two neighbors of the complement color.



0096B4



D84C7D



00934E

Square

The Square scheme is like the rectangle color scheme, but the four colors are evenly spaced on the color wheel.



D84C7D



947E00



009782



0084E5

Rectangle

The Rectangle color scheme consists of four colors that form a rectangle on the color wheel.



D84C7D



C6632E



009782



0093CF

Sweetspot

The Sweet Spot groups the original color and five complimentary colors.



D84C7D



FFCFE0



A74CD8



80626C



000000



808080

Same Dimension

The Same Dimension uses a secret algorithm to generate beautiful new colors.



D84C7D



FF387E



D8614C



6B6064



AB003C



2B000F

Inverse Universe

The Inverse Universe completely reimagines the original color for something new.



D84C7D



FF387E



4CC3D8



6B6064



AB003C



2B000F

Previews

White Background



This preview shows how the Hex color D84C7D looks on a white background.

Color Contrast Check

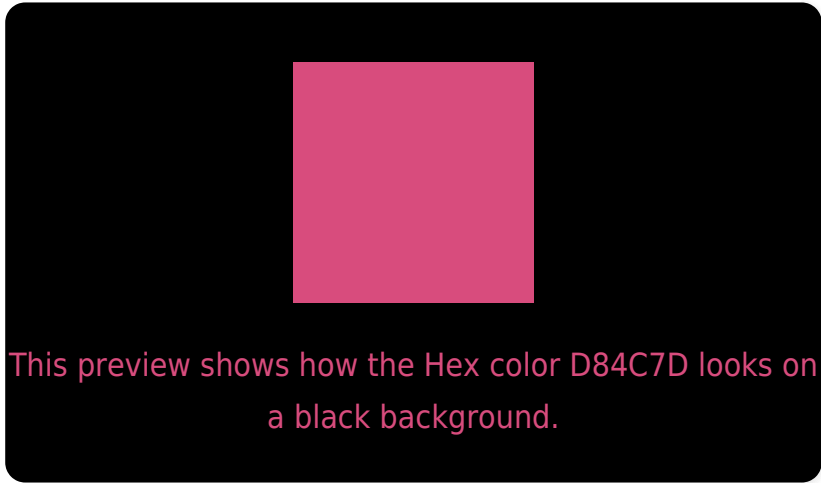
Large Text (above 18pt) WCAG AA ✓ Pass

Any Text WCAG AA × Fail

Large Text (above 18pt) WCAG AAA × Fail

Any Text WCAG AAA × Fail

Black Background



Color Contrast Check

Large Text (above 18pt) WCAG AA ✓ Pass

Any Text WCAG AA ✓ Pass

Large Text (above 18pt) WCAG AAA ✓ Pass

Any Text WCAG AAA × Fail

If you want to check with other color combinations, try the [Color Contrast Checker](#).

Hex D84C7D Background



This preview shows how black text looks on a background with the Hex color D84C7D.




This preview shows how white text looks on a background with the Hex color D84C7D.

Color Blindness Simulation

Color vision deficiency is a very complex topic, and I could not describe the different causes any better than Wikipedia does, so if you want to learn more, you should check out their [article about color blindness](#).

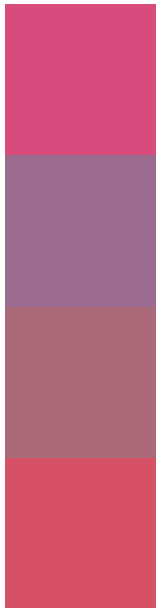
Dichromacy





Tritanopia
D65459

Trichromacy



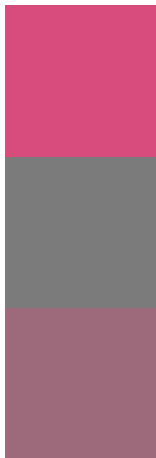
Original Color
D84C7D

Protanomaly
9C6C90

Deuteranomaly
AA6A79

Tritanomaly
D75166

Monochromacy



Original Color
D84C7D

Achromatopsia
7B7B7B

Achromatomaly
9D6A7C

CSS Examples

Text

The CSS property to change the color of the text to Hex D84C7D is called "color". The color property can be set on classes, ids or directly on the HTML element.

This example shows how text in the color #D84C7D looks like.

```
.text, #text, p{  
    color:#D84C7D  
}
```

If you want to add a text shadow in that color use the text-shadow property, you can generate a text shadow directly with our [CSS Text Shadow Generator](#).

Here you see how black text with a 4 pixel #D84C7D colored shadow looks like.

```
.shadow{ text-shadow: 4px 4px 2px #D84C7D
}
```

Border

The CSS property to change the border of an element to Hex D84C7D is called "border". The border property can be set on classes, ids or directly on the HTML element.

This example shows the color as border, it can be applied via the CSS property "border" or "border-color".

```
.border, #border, table{ border:4px solid
#D84C7D }
```

If only the border color should be changed use the property `border-color`.

```
.border{ border-color:#D84C7D }
```

If you want to add a box shadow in that color use:

Here you see how a box with a 4 pixel #D84C7D colored shadow looks like.

```
.boxshadow{ -moz-box-shadow:4px 4px 4px  
4px #D84C7D; -webkit-box-shadow:4px 4px  
4px 4px #D84C7D; box-shadow:4px 4px 4px  
4px #D84C7D }
```

Background

The CSS property to change the background color of an element to Hex D84C7D is called "background". The background property can be set on classes, ids or directly on the HTML element.

```
.background, #background, body{  
background:#D84C7D }
```

If only the background color should be changed can be used:

```
.background{ background-color:#D84C7D }
```

This example shows the color as background, it is applied via the CSS property "background".

To optimize and compress your CSS code, you can use our [online CSS compressor and optimizer](#) based on csstidy. If you want to create a linear or radial gradient as background or border, check our [CSS Gradient Generator](#).

Hey! You found this booklet interesting? Support Converting Colors with the new Membership Option!

The pro membership hides all ads, plus gives you double the colors in the color bucket, and more awesome pro features!

[Learn more, Memberships starting at \\$2.50/m!](#)

**Follow me
on Twitter!**

@ConvertingColor