

Converting Colors

Hex(D89289)

Have a look what the booklet for
Hex(D89289) contains.

Hex(D89289)	3
<i>Conversions</i>	4
<i>Details</i>	6
<i>Harmonies</i>	11
<i>Previews</i>	23
<i>Color Blindness Simulation</i>	26
<i>CSS Examples</i>	29

Color

Hex(D89289)

Conversions

Conversions Part 1

Format	Color
Hex	D89289
RGB	216, 146, 137
RGB Percent	85%, 57%, 54%
CMY	0.1529, 0.4275, 0.4627
CMYK	0.00, 0.32, 0.37, 0.15
HSL	7°, 50%, 69%
HSV	7°, 37%, 85%
XYZ	43.1131, 36.9628, 28.5291
YIQ	165.9040, 44.6090, 12.0410

Conversions

Conversions Part 2

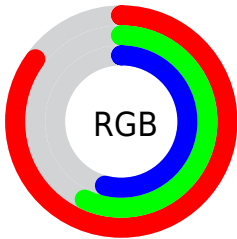
Format	Color
R _Y B	216, 147, 137
Decimal	14193289
CIE Lab	67.25, 25.34, 15.55
CIE LCh	67, 29.733, 31.541
Yxy	36.9628, 0.3970, 0.3403
Android (android.graphics.Color)	4292383369 (0xFFD89289)
YUV	165.9040, -14.2497, 43.9342
Hunter-Lab	60.7971, 20.1852, 14.7360

Details

The Hex color **D89289** is a light color, and the websafe version is hex **CC9999**. A complement of this color would be **89CFD8**, and the grayscale version is **A6A6A6**.

A 20% lighter version of the original color is **FFC8BE**, and **9F5F57** is the 20% darker color. If you saturate the color by 10%, you get **D87F73**, and if you desaturate by 10%, it is **D8A59F**.

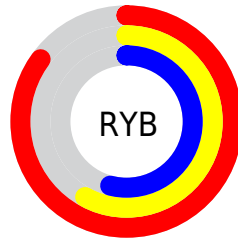
Distribution



Red (85%)

Green (57%)

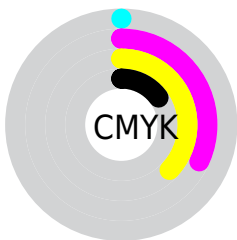
Blue (54%)



Red (85%)

Yellow (58%)

Blue (54%)

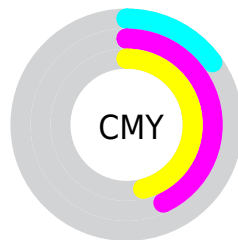


Cyan (0%)

Magenta (32%)

Yellow (37%)

Black (15%)



Cyan (15%)

Magenta (43%)

Yellow (46%)

Brightness & Saturation Gradients

These gradients show how the Hex color D89289 changes by changing the brightness by 10 percent. The first figure shows a shift by +10% for each color and the second figure -10%.

Similar to the brightness gradients but the following saturation gradients show a change of the Hex color D89289 by changing the saturation by 10% instead.

 D89289

 D89289

FFFFFF

 BB7870

 FFC8BE

 9F5F57

 FFE5DA

 844640

 FFFFF7

 692F2A

 4E1815

 360200

 1B0001

 000000

 D89289

 D89289

 D87F73

 D8A59F

 D86C5E

 D8B8B4

 D85948

 D8CBCA

 D84533

 D8DFDF

 D8321D

 D8F2F5

 D81F07

 D8FFFF

 D81900

Harmonies

Analogous

The Analogous color harmony consists of three colors that are next to each other on the color wheel.



D790A3



D89289



CC9975

Triad

The Triadic color harmony groups three colors that are evenly spaced from another and form a triangle on the color wheel.



D89289



79B089



82A6D9

Complementary

The Complementary color scheme is a pair of colors which are on the opposite of each other on the color wheel.



D89289



89CFD8

Split Complementary

Split-complementary colors differ from the complementary color scheme. The scheme consists of three colors, the original color and two neighbors of the complement color.



5DADD2



D89289



5CB2A4

Square

The Square scheme is like the rectangle color scheme, but the four colors are evenly spaced on the color wheel.



D89289



99AB75



4CB2BF



A99CD1

Rectangle

The Rectangle color scheme consists of four colors that form a rectangle on the color wheel.



D89289



BD9F6F



4CB2BF



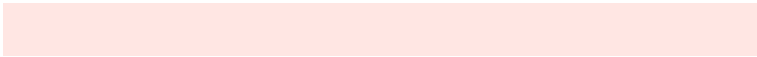
75A9D8

Sweetspot

The Sweet Spot groups the original color and five complimentary colors.



D89289



FFE6E3



D889D0



80716F



000000



808080

Same Dimension

The Same Dimension uses a secret algorithm to generate beautiful new colors.



D89289



FF9C8F



D8B889



6B6260



AB1300



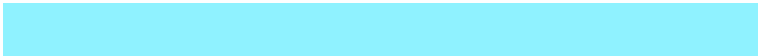
2B0500

Inverse Universe

The Inverse Universe completely reimagines the original color for something new.



89CFD8



8FF2FF



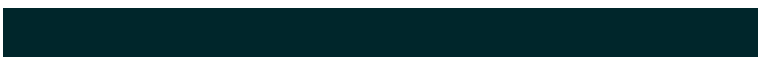
89A9D8



606A6B



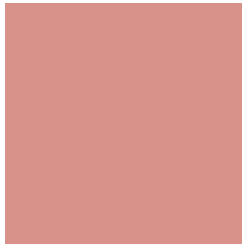
0097AB



00262B

Previews

White Background



This preview shows how the Hex color D89289 looks on a white background.

Color Contrast Check

Large Text (above 18pt) WCAG AA × Fail

Any Text WCAG AA × Fail

Large Text (above 18pt) WCAG AAA × Fail

Any Text WCAG AAA × Fail

Black Background



This preview shows how the Hex color D89289 looks on a black background.

Color Contrast Check

Large Text (above 18pt) WCAG AA ✓ Pass

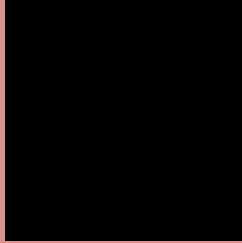
Any Text WCAG AA ✓ Pass

Large Text (above 18pt) WCAG AAA ✓ Pass

Any Text WCAG AAA ✓ Pass

If you want to check with other color combinations, try the [Color Contrast Checker](#).

Hex D89289 Background



This preview shows how black text looks on a background with the Hex color D89289.

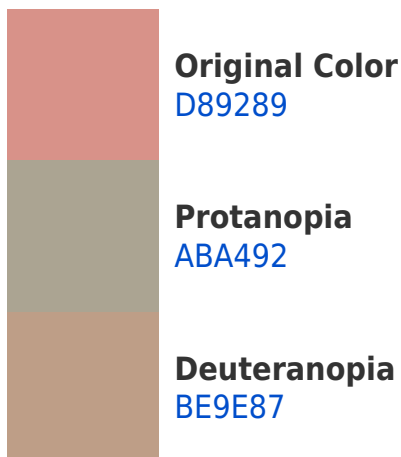


This preview shows how white text looks on a background with the Hex color D89289.

Color Blindness Simulation

Color vision deficiency is a very complex topic, and I could not describe the different causes any better than Wikipedia does, so if you want to learn more, you should check out their [article about color blindness](#).

Dichromacy





Tritanopia
DA8F9A

Trichromacy



Original Color
D89289

Protanomaly
BB9D8F

Deuteranomaly
C79A88

Tritanomaly
D99094

Monochromacy



Original Color
D89289

Achromatopsia
A6A6A6

Achromatomaly
B89F9B

CSS Examples

Text

The CSS property to change the color of the text to Hex D89289 is called "color". The color property can be set on classes, ids or directly on the HTML element.

This example shows how text in the color #D89289 looks like.

```
.text, #text, p{  
    color:#D89289  
}
```

If you want to add a text shadow in that color use the text-shadow property, you can generate a text shadow directly with our [CSS Text Shadow Generator](#).

Here you see how black text with a 4 pixel #D89289 colored shadow looks like.

```
.shadow{ text-shadow: 4px 4px 2px #D89289
}
```

Border

The CSS property to change the border of an element to Hex D89289 is called "border". The border property can be set on classes, ids or directly on the HTML element.

This example shows the color as border, it can be applied via the CSS property "border" or "border-color".

```
.border, #border, table{ border:4px solid
#D89289 }
```

If only the border color should be changed use the property `border-color`.

```
.border{ border-color:#D89289 }
```

If you want to add a box shadow in that color use:

Here you see how a box with a 4 pixel #D89289 colored shadow looks like.

```
.boxshadow{ -moz-box-shadow:4px 4px 4px  
4px #D89289; -webkit-box-shadow:4px 4px  
4px 4px #D89289; box-shadow:4px 4px 4px  
4px #D89289 }
```

Background

The CSS property to change the background color of an element to Hex D89289 is called "background". The background property can be set on classes, ids or directly on the HTML element.

```
.background, #background, body{  
background:#D89289 }
```

If only the background color should be changed can be used:

```
.background{ background-color:#D89289 }
```

This example shows the color as background, it is applied via the CSS property "background".

To optimize and compress your CSS code, you can use our [online CSS compressor and optimizer](#) based on csstidy. If you want to create a linear or radial gradient as background or border, check our [CSS Gradient Generator](#).

Hey! You found this booklet interesting? Support Converting Colors with the new Membership Option!

The pro membership hides all ads, plus gives you double the colors in the color bucket, and more awesome pro features!

[Learn more, Memberships starting at \\$2.50/m!](#)

**Follow me
on Twitter!**

@ConvertingColor