

# Converting Colors

Hex(D8968B)

Have a look what the booklet for  
Hex(D8968B) contains.

<b>Hex(D8968B)</b> .....	3
<i><b>Conversions</b></i> .....	4
<i><b>Details</b></i> .....	6
<i><b>Harmonies</b></i> .....	11
<i><b>Previews</b></i> .....	23
<i><b>Color Blindness Simulation</b></i> .....	26
<i><b>CSS Examples</b></i> .....	29

# **Color**

**Hex(D8968B)**

# Conversions

## Conversions Part 1

<b>Format</b>	<b>Color</b>
Hex	D8968B
RGB	216, 150, 139
RGB Percent	85%, 59%, 55%
CMY	0.1529, 0.4118, 0.4549
CMYK	0.00, 0.31, 0.36, 0.15
HSL	9°, 50%, 70%
HSV	9°, 36%, 85%
XYZ	43.8854, 38.2757, 29.5010
YIQ	168.4800, 42.8670, 10.5710

# Conversions

## Conversions Part 2

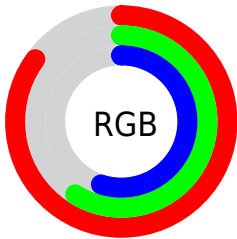
Format	Color
R <sub>Y</sub> B	216, 152, 139
Decimal	14194315
CIE Lab	68.22, 23.42, 15.80
CIE LCh	68, 28.251, 33.997
Yxy	38.2757, 0.3930, 0.3428
Android (android.graphics.Color)	4292384395 (0xFFD8968B)
YUV	168.4800, -14.5336, 41.6750
Hunter-Lab	61.8674, 18.3506, 15.0351

# Details

The Hex color **D8968B** is a light color, and the websafe version is hex **CC9999**. A complement of this color would be **8BCDD8**, and the grayscale version is **A9A9A9**.

A 20% lighter version of the original color is **FFCDC0**, and **9F6359** is the 20% darker color. If you saturate the color by 10%, you get **D88375**, and if you desaturate by 10%, it is **D8A9A1**.

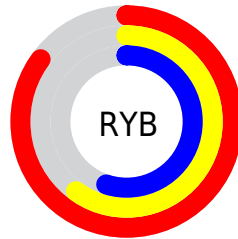
# Distribution



Red (85%)

Green (59%)

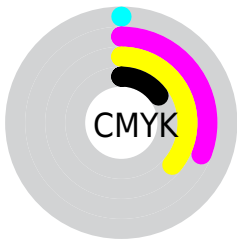
Blue (55%)



Red (85%)

Yellow (60%)

Blue (55%)

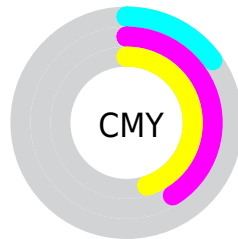


Cyan (0%)

Magenta (31%)

Yellow (36%)

Black (15%)



Cyan (15%)

Magenta (41%)

Yellow (45%)

# Brightness & Saturation Gradients

These gradients show how the Hex color D8968B changes by changing the brightness by 10 percent. The first figure shows a shift by +10% for each color and the second figure -10%.

Similar to the brightness gradients but the following saturation gradients show a change of the Hex color D8968B by changing the saturation by 10% instead.



 D8968B

 D8968B

FFFFFF

 BB7C72

 FFCDC0

 9F6359

 FFE9DC

 844A42

 FFFFF9

 69332B

 4F1C17

 360600

 1D0001

 000000

 D8968B

 D8968B

 D88375

 D8A9A1

 D87160

 D8BBB6

 D85E4A

 D8CECC

 D84C35

 D8E0E1

 D8391F

 D8F3F7

 D82709

 D8FFFF

 D81F00

# Harmonies

## Analogous

The Analogous color harmony consists of three colors that are next to each other on the color wheel.



D893A4



D8968B



CB9D79

# Triad

The Triadic color harmony groups three colors that are evenly spaced from another and form a triangle on the color wheel.



D8968B



7CB28F



8AA8D9

# Complementary

The Complementary color scheme is a pair of colors which are on the opposite of each other on the color wheel.



D8968B



8BCDD8

# Split Complementary

Split-complementary colors differ from the complementary color scheme. The scheme consists of three colors, the original color and two neighbors of the complement color.



67AFD3



D8968B



61B5A9

# Square

The Square scheme is like the rectangle color scheme, but the four colors are evenly spaced on the color wheel.



D8968B



99AD7B



56B3C2



AE9FD1

# Rectangle

The Rectangle color scheme consists of four colors that form a rectangle on the color wheel.



D8968B



BDA374



56B3C2



7EAAD9

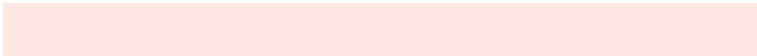


# Sweetspot

The Sweet Spot groups the original color and five complimentary colors.



D8968B



FFE7E3



D88BCE



80716F



000000



808080



# Same Dimension

The Same Dimension uses a secret algorithm to generate beautiful new colors.



D8968B



FFA191



D8BC8B



6B6260



AB1800



2B0600



# Inverse Universe

The Inverse Universe completely reimagines the original color for something new.



8BCDD8



91EFFF



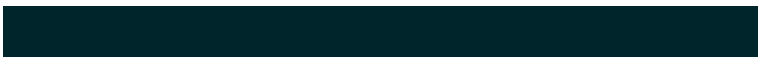
8BA7D8



606A6B



0092AB

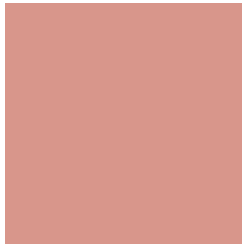


00252B



# Previews

## White Background



This preview shows how the Hex color D8968B looks on a white background.

## Color Contrast Check

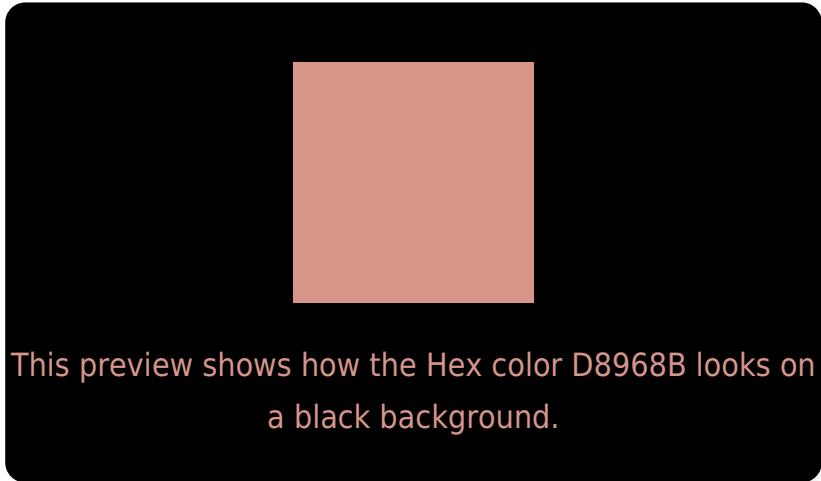
Large Text (above 18pt) WCAG AA × Fail

Any Text WCAG AA × Fail

Large Text (above 18pt) WCAG AAA × Fail

Any Text WCAG AAA × Fail

# Black Background



## Color Contrast Check

Large Text (above 18pt) WCAG AA ✓ Pass

Any Text WCAG AA ✓ Pass

Large Text (above 18pt) WCAG AAA ✓ Pass

Any Text WCAG AAA ✓ Pass

If you want to check with other color combinations, try the [Color Contrast Checker](#).



## Hex D8968B Background



This preview shows how black text looks on a background with the Hex color D8968B.

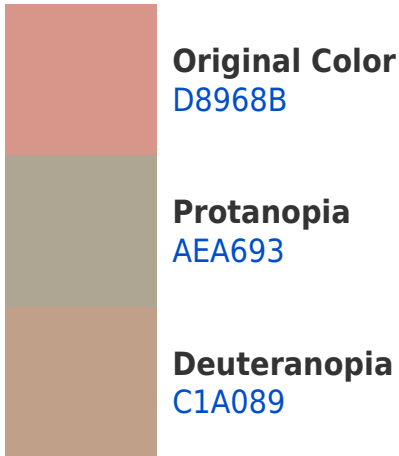


This preview shows how white text looks on a background with the Hex color D8968B.

# Color Blindness Simulation

Color vision deficiency is a very complex topic, and I could not describe the different causes any better than Wikipedia does, so if you want to learn more, you should check out their [article about color blindness](#).

## Dichromacy





**Tritanopia**  
DA939E

# Trichromacy



**Original Color**  
D8968B

**Protanomaly**  
BDA090

**Deuteranomaly**  
C99C8A

**Tritanomaly**  
D99497

# Monochromacy



**Original Color**  
D8968B

**Achromatopsia**  
A8A8A8

**Achromatomaly**  
B9A19D

# CSS Examples

## Text

The CSS property to change the color of the text to Hex D8968B is called "color". The color property can be set on classes, ids or directly on the HTML element.

This example shows how text in the color #D8968B looks like.

```
.text, #text, p{  
    color:#D8968B  
}
```

If you want to add a text shadow in that color use the text-shadow property, you can generate a text shadow directly with our [CSS Text Shadow Generator](#).

Here you see how black text with a 4 pixel #D8968B colored shadow looks like.

```
.shadow{ text-shadow: 4px 4px 2px #D8968B
}
```

## Border

The CSS property to change the border of an element to Hex D8968B is called "border". The border property can be set on classes, ids or directly on the HTML element.

This example shows the color as border, it can be applied via the CSS property "border" or "border-color".

```
.border, #border, table{ border:4px solid
#D8968B }
```

If only the border color should be changed use the property `border-color`.

```
.border{ border-color:#D8968B }
```

If you want to add a box shadow in that color use:

Here you see how a box with a 4 pixel #D8968B colored shadow looks like.

```
.boxshadow{ -moz-box-shadow:4px 4px 4px  
4px #D8968B; -webkit-box-shadow:4px 4px  
4px 4px #D8968B; box-shadow:4px 4px 4px  
4px #D8968B }
```

# Background

The CSS property to change the background color of an element to Hex D8968B is called "background". The background property can be set on classes, ids or directly on the HTML element.

```
.background, #background, body{  
background:#D8968B }
```

If only the background color should be changed can be used:

```
.background{ background-color:#D8968B }
```

This example shows the color as background, it is applied via the CSS property "background".

To optimize and compress your CSS code, you can use our [online CSS compressor and optimizer](#) based on csstidy. If you want to create a linear or radial gradient as background or border, check our [CSS Gradient Generator](#).



Hey! You found this booklet interesting? Support Converting Colors with the new Membership Option!

The pro membership hides all ads, plus gives you double the colors in the color bucket, and more awesome pro features!

**[Learn more, Memberships starting at \\$2.50/m!](#)**

**Follow me  
on Twitter!**

@ConvertingColor