

# Converting Colors

Hex(D8A399)

Have a look what the booklet for  
Hex(D8A399) contains.

<b>Hex(D8A399)</b> .....	3
<i><b>Conversions</b></i> .....	4
<i><b>Details</b></i> .....	6
<i><b>Harmonies</b></i> .....	11
<i><b>Previews</b></i> .....	23
<i><b>Color Blindness Simulation</b></i> .....	26
<i><b>CSS Examples</b></i> .....	29

# **Color**

**Hex(D8A399)**

# Conversions

## Conversions Part 1

<b>Format</b>	<b>Color</b>
Hex	D8A399
RGB	216, 163, 153
RGB Percent	85%, 64%, 60%
CMY	0.1529, 0.3608, 0.4000
CMYK	0.00, 0.25, 0.29, 0.15
HSL	10°, 45%, 72%
HSV	10°, 29%, 85%
XYZ	47.1659, 43.0932, 35.9689
YIQ	177.7070, 34.7980, 8.1260

# Conversions

## Conversions Part 2

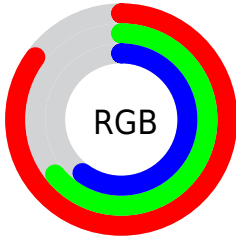
Format	Color
R <sub>Y</sub> B	216, 165, 153
Decimal	14197657
CIE Lab	71.62, 18.19, 12.81
CIE LCh	72, 22.246, 35.157
Yxy	43.0932, 0.3737, 0.3414
Android (android.graphics.Color)	4292387737 (0xFFD8A399)
YUV	177.7070, -12.1806, 33.5830
Hunter-Lab	65.6454, 13.3717, 13.4652

# Details

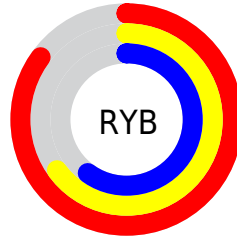
The Hex color **D8A399** is a light color, and the websafe version is hex **CC9999**. A complement of this color would be **99CED8**, and the grayscale version is **B2B2B2**.

A 20% lighter version of the original color is **FFDACF**, and **A06F66** is the 20% darker color. If you saturate the color by 10%, you get **D89183**, and if you desaturate by 10%, it is **D8B5AF**.

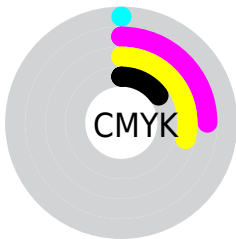
# Distribution



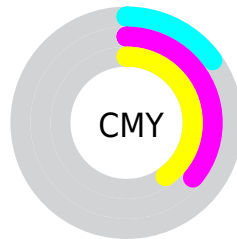
- Red (85%)
- Green (64%)
- Blue (60%)



- Red (85%)
- Yellow (65%)
- Blue (60%)



- Cyan (0%)
- Magenta (25%)
- Yellow (29%)
- Black (15%)



- Cyan (15%)
- Magenta (36%)
- Yellow (40%)

# Brightness & Saturation Gradients

These gradients show how the Hex color D8A399 changes by changing the brightness by 10 percent. The first figure shows a shift by +10% for each color and the second figure -10%.

Similar to the brightness gradients but the following saturation gradients show a change of the Hex color D8A399 by changing the saturation by 10% instead.



 D8A399

 D8A399

FFFFFF

 BC897F

 FFDACF

 A06F66

 FFF7EC

 85564E

 6B3F37

 512822

 39130C

 230000

 000000

 D8A399

 D8A399

 D89183

 D8B5AF

 D87F6E

 D8C7C4

 D86C58

 D8DADA

 D85A43

 D8ECEF

 D8482D

 D8FEFF

 D83617

 D8FFFF

 D82402

 D82200

# Harmonies

## Analogous

The Analogous color harmony consists of three colors that are next to each other on the color wheel.



D8A1AD



D8A399



CDA88B

# Triad

The Triadic color harmony groups three colors that are evenly spaced from another and form a triangle on the color wheel.



D8A399



8EB99E



9CB0D7

# Complementary

The Complementary color scheme is a pair of colors which are on the opposite of each other on the color wheel.



D8A399



99CED8

# Split Complementary

Split-complementary colors differ from the complementary color scheme. The scheme consists of three colors, the original color and two neighbors of the complement color.



83B6D4



D8A399



7CBBB2

# Square

The Square scheme is like the rectangle color scheme, but the four colors are evenly spaced on the color wheel.



D8A399



A5B58E



77BAC6



B7A9D1

# Rectangle

The Rectangle color scheme consists of four colors that form a rectangle on the color wheel.



D8A399



C2AD87



77BAC6



93B2D7

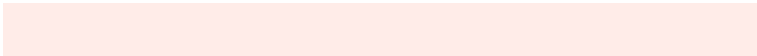


# Sweetspot

The Sweet Spot groups the original color and five complimentary colors.



D8A399



FFECE8



D899CF



807471



000000



808080



# Same Dimension

The Same Dimension uses a secret algorithm to generate beautiful new colors.



D8A399



FFB4A6



D8C299



6B6260



AB1B00



2B0700



# Inverse Universe

The Inverse Universe completely reimagines the original color for something new.



99CED8



A6F1FF



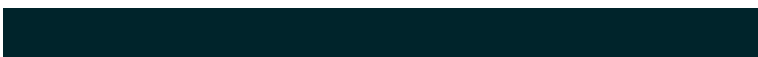
99AFD8



60696B



0090AB

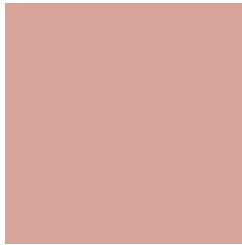


00242B



# Previews

## White Background



This preview shows how the Hex color D8A399 looks on a white background.

## Color Contrast Check

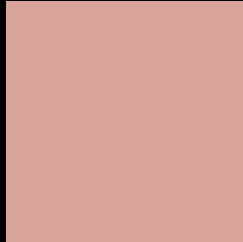
Large Text (above 18pt) WCAG AA × Fail

Any Text WCAG AA × Fail

Large Text (above 18pt) WCAG AAA × Fail

Any Text WCAG AAA × Fail

# Black Background



This preview shows how the Hex color D8A399 looks on a black background.

## Color Contrast Check

Large Text (above 18pt) WCAG AA ✓ Pass

Any Text WCAG AA ✓ Pass

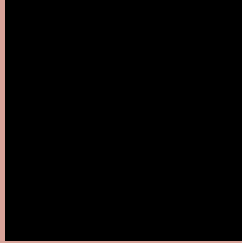
Large Text (above 18pt) WCAG AAA ✓ Pass

Any Text WCAG AAA ✓ Pass

If you want to check with other color combinations, try the [Color Contrast Checker](#).



## Hex D8A399 Background



This preview shows how black text looks on a background with the Hex color D8A399.



This preview shows how white text looks on a background with the Hex color D8A399.

# Color Blindness Simulation

Color vision deficiency is a very complex topic, and I could not describe the different causes any better than Wikipedia does, so if you want to learn more, you should check out their [article about color blindness](#).

## Dichromacy



**Original Color**  
D8A399

**Protanopia**  
B7AF9F

**Deuteranopia**  
C9A998



# Trichromacy



**Original Color**  
D8A399

**Protanomaly**  
C3AB9D

**Deuteranomaly**  
CEA798

**Tritanomaly**  
D9A1A5

# Monochromacy



**Original Color**  
D8A399

**Achromatopsia**  
B2B2B2

**Achromatomaly**  
C0ADA9

# CSS Examples

## Text

The CSS property to change the color of the text to Hex D8A399 is called "color". The color property can be set on classes, ids or directly on the HTML element.

This example shows how text in the color #D8A399 looks like.

```
.text, #text, p{  
    color:#D8A399  
}
```

If you want to add a text shadow in that color use the text-shadow property, you can generate a text shadow directly with our [CSS Text Shadow Generator](#).

Here you see how black text with a 4 pixel #D8A399 colored shadow looks like.

```
.shadow{ text-shadow: 4px 4px 2px #D8A399
}
```

## Border

The CSS property to change the border of an element to Hex D8A399 is called "border". The border property can be set on classes, ids or directly on the HTML element.

This example shows the color as border, it can be applied via the CSS property "border" or "border-color".

```
.border, #border, table{ border:4px solid
#D8A399 }
```

If only the border color should be changed use the property `border-color`.

```
.border{ border-color:#D8A399 }
```

If you want to add a box shadow in that color use:

Here you see how a box with a 4 pixel #D8A399 colored shadow looks like.

```
.boxshadow{ -moz-box-shadow:4px 4px 4px  
4px #D8A399; -webkit-box-shadow:4px 4px  
4px 4px #D8A399; box-shadow:4px 4px 4px  
4px #D8A399 }
```

# Background

The CSS property to change the background color of an element to Hex D8A399 is called "background". The background property can be set on classes, ids or directly on the HTML element.

```
.background, #background, body{  
background:#D8A399 }
```

If only the background color should be changed can be used:

```
.background{ background-color:#D8A399 }
```

This example shows the color as background, it is applied via the CSS property "background".

To optimize and compress your CSS code, you can use our [online CSS compressor and optimizer](#) based on csstidy. If you want to create a linear or radial gradient as background or border, check our [CSS Gradient Generator](#).



Hey! You found this booklet interesting? Support Converting Colors with the new Membership Option!

The pro membership hides all ads, plus gives you double the colors in the color bucket, and more awesome pro features!

**[Learn more, Memberships starting at \\$2.50/m!](#)**

**Follow me  
on Twitter!**

@ConvertingColor