

Converting Colors

Hex(D8A69E)

Have a look what the booklet for
Hex(D8A69E) contains.

Hex(D8A69E)	3
<i>Conversions</i>	4
<i>Details</i>	6
<i>Harmonies</i>	11
<i>Previews</i>	23
<i>Color Blindness Simulation</i>	26
<i>CSS Examples</i>	29

Color

Hex(D8A69E)

Conversions

Conversions Part 1

Format	Color
Hex	D8A69E
RGB	216, 166, 158
RGB Percent	85%, 65%, 62%
CMY	0.1529, 0.3490, 0.3804
CMYK	0.00, 0.23, 0.27, 0.15
HSL	8°, 43%, 73%
HSV	8°, 27%, 85%
XYZ	48.1267, 44.3400, 38.3697
YIQ	180.0380, 32.3680, 8.1120

Conversions

Conversions Part 2

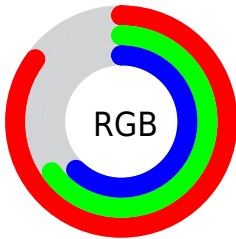
Format	Color
R _Y B	216, 167, 158
Decimal	14198430
CIE Lab	72.46, 17.25, 11.24
CIE LCh	72, 20.590, 33.094
Yxy	44.3400, 0.3678, 0.3389
Android (android.graphics.Color)	4292388510 (0xFFD8A69E)
YUV	180.0380, -10.8647, 31.5387
Hunter-Lab	66.5883, 12.4814, 12.4476

Details

The Hex color **D8A69E** is a light color, and the websafe version is hex **CC9999**. A complement of this color would be **9ED0D8**, and the grayscale version is **B4B4B4**.

A 20% lighter version of the original color is **FFDDD5**, and **A0726B** is the 20% darker color. If you saturate the color by 10%, you get **D89388**, and if you desaturate by 10%, it is **D8B9B4**.

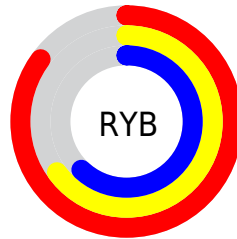
Distribution



Red (85%)

Green (65%)

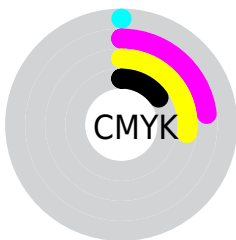
Blue (62%)



Red (85%)

Yellow (65%)

Blue (62%)

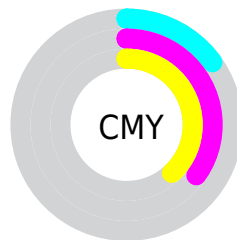


Cyan (0%)

Magenta (23%)

Yellow (27%)

Black (15%)



Cyan (15%)

Magenta (35%)

Yellow (38%)

Brightness & Saturation Gradients

These gradients show how the Hex color D8A69E changes by changing the brightness by 10 percent. The first figure shows a shift by +10% for each color and the second figure -10%.

Similar to the brightness gradients but the following saturation gradients show a change of the Hex color D8A69E by changing the saturation by 10% instead.

 D8A69E

 D8A69E

FFFFFF

 BC8C84

 FFDDD5

 A0726B

 FFFAF1

 855953

 6B423B

 522B26

 391611

 240000

 000000

 D8A69E

 D8A69E

 D89388

 D8B9B4

 D88173

 D8CBC9

 D86E5D

 D8DEDF

 D85C48

 D8F0F4

 D84932

 D8FFFF

 D8361C

 D82407

 D81E00

Harmonies

Analogous

The Analogous color harmony consists of three colors that are next to each other on the color wheel.



D7A4B0



D8A69E



CFAB91

Triad

The Triadic color harmony groups three colors that are evenly spaced from another and form a triangle on the color wheel.



D8A69E



94BBA0



9FB3D7

Complementary

The Complementary color scheme is a pair of colors which are on the opposite of each other on the color wheel.



D8A69E



9ED0D8

Split Complementary

Split-complementary colors differ from the complementary color scheme. The scheme consists of three colors, the original color and two neighbors of the complement color.



88B8D3



D8A69E



84BDB3

Square

The Square scheme is like the rectangle color scheme, but the four colors are evenly spaced on the color wheel.



D8A69E



A9B792



7EBCC6



B8ACD1

Rectangle

The Rectangle color scheme consists of four colors that form a rectangle on the color wheel.



D8A69E



C4AF8D



7EBCC6



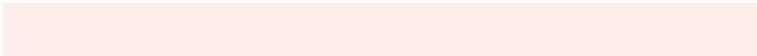
96B5D7

Sweetspot

The Sweet Spot groups the original color and five complimentary colors.



D8A69E



FFEDEB



D89ED0



807573



000000



808080

Same Dimension

The Same Dimension uses a secret algorithm to generate beautiful new colors.



D8A69E



FFB9AD



D8C39E



6B6260



AB1800



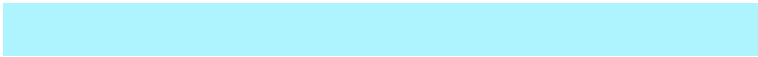
2B0600

Inverse Universe

The Inverse Universe completely reimagines the original color for something new.



9ED0D8



ADF4FF



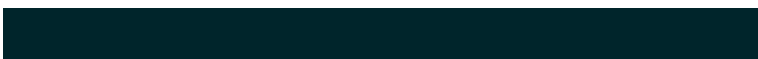
9EB3D8



606A6B



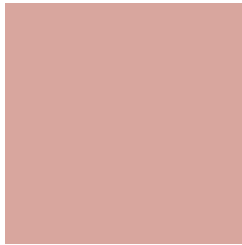
0093AB



00252B

Previews

White Background



This preview shows how the Hex color D8A69E looks on a white background.

Color Contrast Check

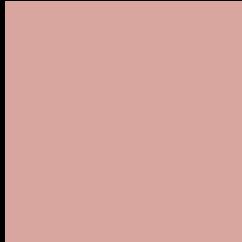
Large Text (above 18pt) WCAG AA × Fail

Any Text WCAG AA × Fail

Large Text (above 18pt) WCAG AAA × Fail

Any Text WCAG AAA × Fail

Black Background



This preview shows how the Hex color D8A69E looks on a black background.

Color Contrast Check

Large Text (above 18pt) WCAG AA ✓ Pass

Any Text WCAG AA ✓ Pass

Large Text (above 18pt) WCAG AAA ✓ Pass

Any Text WCAG AAA ✓ Pass

If you want to check with other color combinations, try the [Color Contrast Checker](#).

Hex D8A69E Background



This preview shows how black text looks on a background with the Hex color D8A69E.

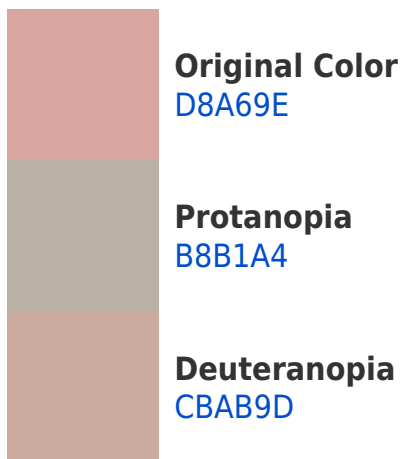


This preview shows how white text looks on a background with the Hex color D8A69E.

Color Blindness Simulation

Color vision deficiency is a very complex topic, and I could not describe the different causes any better than Wikipedia does, so if you want to learn more, you should check out their [article about color blindness](#).

Dichromacy





Tritanopia
DAA3B0

Trichromacy



Original Color
D8A69E

Protanomaly
C4ADA2

Deuteranomaly
D0A99D

Tritanomaly
D9A4A9

Monochromacy



Original Color
D8A69E

Achromatopsia
B4B4B4

Achromatomaly
C1AFAC

CSS Examples

Text

The CSS property to change the color of the text to Hex D8A69E is called "color". The color property can be set on classes, ids or directly on the HTML element.

This example shows how text in the color #D8A69E looks like.

```
.text, #text, p{  
    color:#D8A69E  
}
```

If you want to add a text shadow in that color use the text-shadow property, you can generate a text shadow directly with our [CSS Text Shadow Generator](#).

Here you see how black text with a 4 pixel #D8A69E colored shadow looks like.

```
.shadow{ text-shadow: 4px 4px 2px #D8A69E  
}
```

Border

The CSS property to change the border of an element to Hex D8A69E is called "border". The border property can be set on classes, ids or directly on the HTML element.

This example shows the color as border, it can be applied via the CSS property "border" or "border-color".

```
.border, #border, table{ border:4px solid  
#D8A69E }
```

If only the border color should be changed use the property `border-color`.

```
.border{ border-color:#D8A69E }
```

If you want to add a box shadow in that color use:

Here you see how a box with a 4 pixel #D8A69E colored shadow looks like.

```
.boxshadow{ -moz-box-shadow:4px 4px 4px  
4px #D8A69E; -webkit-box-shadow:4px 4px  
4px 4px #D8A69E; box-shadow:4px 4px 4px  
4px #D8A69E }
```

Background

The CSS property to change the background color of an element to Hex D8A69E is called "background". The background property can be set on classes, ids or directly on the HTML element.

```
.background, #background, body{  
background:#D8A69E }
```

If only the background color should be changed can be used:

```
.background{ background-color:#D8A69E }
```

This example shows the color as background, it is applied via the CSS property "background".

To optimize and compress your CSS code, you can use our [online CSS compressor and optimizer](#) based on csstidy. If you want to create a linear or radial gradient as background or border, check our [CSS Gradient Generator](#).

Hey! You found this booklet interesting? Support Converting Colors with the new Membership Option!

The pro membership hides all ads, plus gives you double the colors in the color bucket, and more awesome pro features!

[Learn more, Memberships starting at \\$2.50/m!](#)

**Follow me
on Twitter!**

@ConvertingColor