

Converting Colors

Hex(D8A6A0)

Have a look what the booklet for
Hex(D8A6A0) contains.

Hex(D8A6A0)	3
<i>Conversions</i>	4
<i>Details</i>	6
<i>Harmonies</i>	11
<i>Previews</i>	23
<i>Color Blindness Simulation</i>	26
<i>CSS Examples</i>	29

Color

Hex(D8A6A0)

Conversions

Conversions Part 1

Format	Color
Hex	D8A6A0
RGB	216, 166, 160
RGB Percent	85%, 65%, 63%
CMY	0.1529, 0.3490, 0.3725
CMYK	0.00, 0.23, 0.26, 0.15
HSL	6°, 42%, 74%
HSV	6°, 26%, 85%
XYZ	48.3003, 44.4094, 39.2839
YIQ	180.2660, 31.7260, 8.7340

Conversions

Conversions Part 2

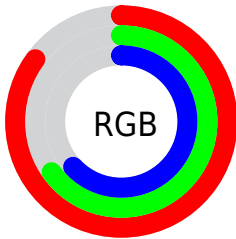
Format	Color
R _Y B	216, 167, 160
Decimal	14198432
CIE Lab	72.50, 17.53, 10.21
CIE LCh	73, 20.286, 30.215
Yxy	44.4094, 0.3659, 0.3365
Android (android.graphics.Color)	4292388512 (0xFFD8A6A0)
YUV	180.2660, -9.9911, 31.3387
Hunter-Lab	66.6404, 12.7543, 11.6974

Details

The Hex color **D8A6A0** is a light color, and the websafe version is hex **CC9999**. A complement of this color would be **A0D2D8**, and the grayscale version is **B4B4B4**.

A 20% lighter version of the original color is **FFDDD7**, and **A0726D** is the 20% darker color. If you saturate the color by 10%, you get **D8938A**, and if you desaturate by 10%, it is **D8B9B6**.

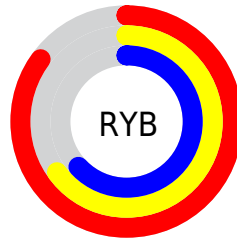
Distribution



Red (85%)

Green (65%)

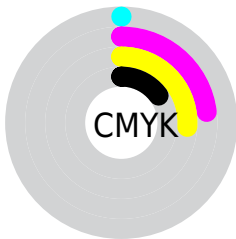
Blue (63%)



Red (85%)

Yellow (65%)

Blue (63%)

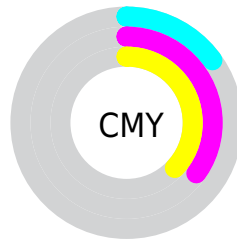


Cyan (0%)

Magenta (23%)

Yellow (26%)

Black (15%)



Cyan (15%)

Magenta (35%)

Yellow (37%)

Brightness & Saturation Gradients

These gradients show how the Hex color D8A6A0 changes by changing the brightness by 10 percent. The first figure shows a shift by +10% for each color and the second figure -10%.

Similar to the brightness gradients but the following saturation gradients show a change of the Hex color D8A6A0 by changing the saturation by 10% instead.

 D8A6A0

 D8A6A0

FFFFFF

 BC8C86

 FFDDD7

 A0726D

 FFFAF3

 855954

 6B413D

 522B27

 391613

 250000

 000000

 D8A6A0

 D8A6A0

 D8938A

 D8B9B6

 D87F75

 D8CDCB

 D86C5F

 D8E0E1

 D8594A

 D8F3F6

 D84634

 D8FFFF

 D8321E

 D81F09

 D81700

Harmonies

Analogous

The Analogous color harmony consists of three colors that are next to each other on the color wheel.



D6A5B2



D8A6A0



D0AB92

Triad

The Triadic color harmony groups three colors that are evenly spaced from another and form a triangle on the color wheel.



D8A6A0



97BB9F



9DB3D7

Complementary

The Complementary color scheme is a pair of colors which are on the opposite of each other on the color wheel.



D8A6A0



A0D2D8

Split Complementary

Split-complementary colors differ from the complementary color scheme. The scheme consists of three colors, the original color and two neighbors of the complement color.



88B9D1



D8A6A0



86DBD1

Square

The Square scheme is like the rectangle color scheme, but the four colors are evenly spaced on the color wheel.



D8A6A0



ACB692



7FBCC4



B5ADD2

Rectangle

The Rectangle color scheme consists of four colors that form a rectangle on the color wheel.



D8A6A0



C6AF8E



7FBCC4



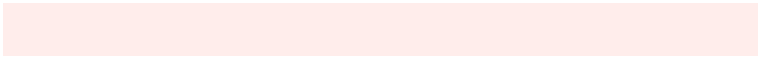
95B5D6

Sweetspot

The Sweet Spot groups the original color and five complimentary colors.



D8A6A0



FFEDEB



D8A0D2



807473



000000



808080

Same Dimension

The Same Dimension uses a secret algorithm to generate beautiful new colors.



D8A6A0



FFB8B0



D8C2A0



6B6260



AB1200



2B0500

Inverse Universe

The Inverse Universe completely reimagines the original color for something new.



A0D2D8



B0F7FF



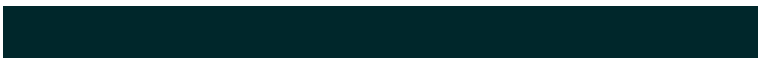
A0B6D8



606A6B



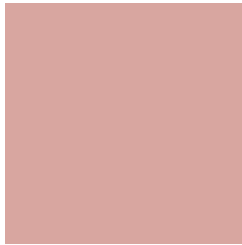
0099AB



00272B

Previews

White Background



This preview shows how the Hex color D8A6A0 looks on a white background.

Color Contrast Check

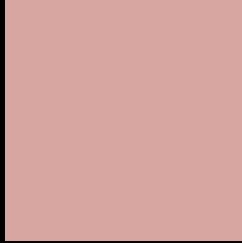
Large Text (above 18pt) WCAG AA × Fail

Any Text WCAG AA × Fail

Large Text (above 18pt) WCAG AAA × Fail

Any Text WCAG AAA × Fail

Black Background



This preview shows how the Hex color D8A6A0 looks on a black background.

Color Contrast Check

Large Text (above 18pt) WCAG AA ✓ Pass

Any Text WCAG AA ✓ Pass

Large Text (above 18pt) WCAG AAA ✓ Pass

Any Text WCAG AAA ✓ Pass

If you want to check with other color combinations, try the [Color Contrast Checker](#).

Hex D8A6A0 Background



This preview shows how black text looks on a background with the Hex color D8A6A0.

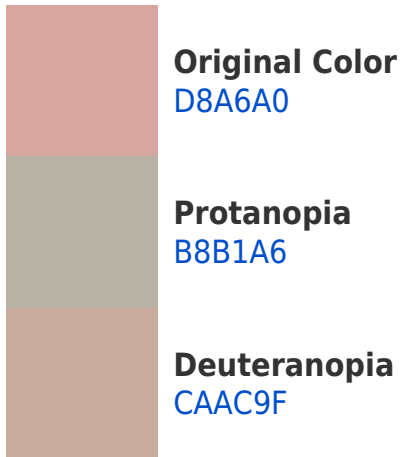


This preview shows how white text looks on a background with the Hex color D8A6A0.

Color Blindness Simulation

Color vision deficiency is a very complex topic, and I could not describe the different causes any better than Wikipedia does, so if you want to learn more, you should check out their [article about color blindness](#).

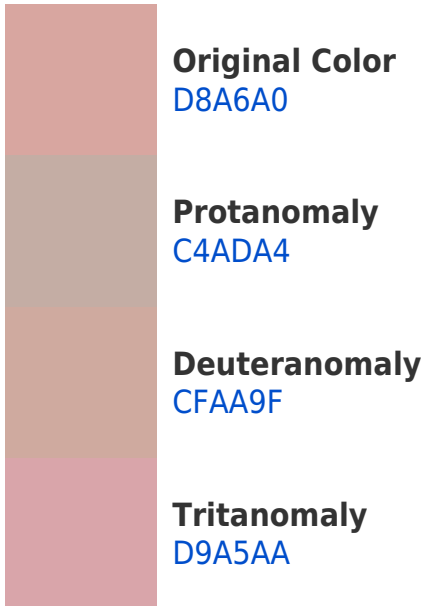
Dichromacy



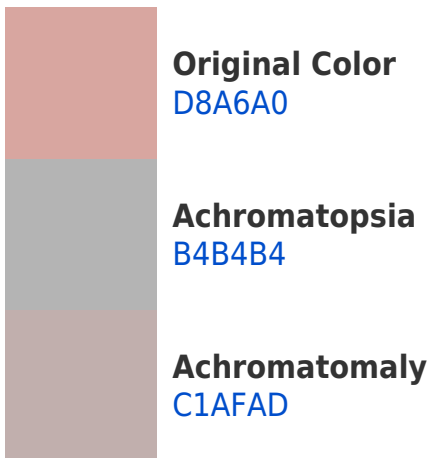


Tritanopia
DAA4B0

Trichromacy



Monochromacy



CSS Examples

Text

The CSS property to change the color of the text to Hex D8A6A0 is called "color". The color property can be set on classes, ids or directly on the HTML element.

This example shows how text in the color #D8A6A0 looks like.

```
.text, #text, p{  
    color:#D8A6A0  
}
```

If you want to add a text shadow in that color use the text-shadow property, you can generate a text shadow directly with our [CSS Text Shadow Generator](#).

Here you see how black text with a 4 pixel #D8A6A0 colored shadow looks like.

```
.shadow{ text-shadow: 4px 4px 2px #D8A6A0
}
```

Border

The CSS property to change the border of an element to Hex D8A6A0 is called "border". The border property can be set on classes, ids or directly on the HTML element.

This example shows the color as border, it can be applied via the CSS property "border" or "border-color".

```
.border, #border, table{ border:4px solid
#D8A6A0 }
```

If only the border color should be changed use the property `border-color`.

```
.border{ border-color:#D8A6A0 }
```

If you want to add a box shadow in that color use:

Here you see how a box with a 4 pixel #D8A6A0 colored shadow looks like.

```
.boxshadow{ -moz-box-shadow:4px 4px 4px  
4px #D8A6A0; -webkit-box-shadow:4px 4px  
4px 4px #D8A6A0; box-shadow:4px 4px 4px  
4px #D8A6A0 }
```

Background

The CSS property to change the background color of an element to Hex D8A6A0 is called "background". The background property can be set on classes, ids or directly on the HTML element.

```
.background, #background, body{  
background:#D8A6A0 }
```

If only the background color should be changed can be used:

```
.background{ background-color:#D8A6A0 }
```

This example shows the color as background, it is applied via the CSS property "background".

To optimize and compress your CSS code, you can use our [online CSS compressor and optimizer](#) based on csstidy. If you want to create a linear or radial gradient as background or border, check our [CSS Gradient Generator](#).

Hey! You found this booklet interesting? Support Converting Colors with the new Membership Option!

The pro membership hides all ads, plus gives you double the colors in the color bucket, and more awesome pro features!

[Learn more, Memberships starting at \\$2.50/m!](#)

**Follow me
on Twitter!**

@ConvertingColor