

Converting Colors

Hex(D8A7A2)

Have a look what the booklet for
Hex(D8A7A2) contains.

Hex(D8A7A2)	3
<i>Conversions</i>	4
<i>Details</i>	6
<i>Harmonies</i>	11
<i>Previews</i>	23
<i>Color Blindness Simulation</i>	26
<i>CSS Examples</i>	29

Color

Hex(D8A7A2)

Conversions

Conversions Part 1

Format	Color
Hex	D8A7A2
RGB	216, 167, 162
RGB Percent	85%, 65%, 64%
CMY	0.1529, 0.3451, 0.3647
CMYK	0.00, 0.23, 0.25, 0.15
HSL	6°, 41%, 74%
HSV	6°, 25%, 85%
XYZ	48.6592, 44.8450, 40.2738
YIQ	181.0810, 30.8090, 8.8330

Conversions

Conversions Part 2

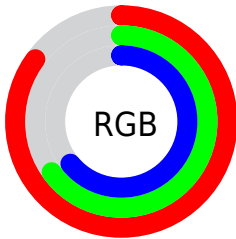
Format	Color
R _Y B	216, 168, 162
Decimal	14198690
CIE Lab	72.79, 17.27, 9.52
CIE LCh	73, 19.722, 28.862
Yxy	44.8450, 0.3637, 0.3352
Android (android.graphics.Color)	4292388770 (0xFFD8A7A2)
YUV	181.0810, -9.4069, 30.6240
Hunter-Lab	66.9664, 12.5107, 11.2193

Details

The Hex color **D8A7A2** is a light color, and the websafe version is hex **CC9999**. A complement of this color would be **A2D3D8**, and the grayscale version is **B5B5B5**.

A 20% lighter version of the original color is **FFDED9**, and **A0736E** is the 20% darker color. If you saturate the color by 10%, you get **D8938C**, and if you desaturate by 10%, it is **D8BBB8**.

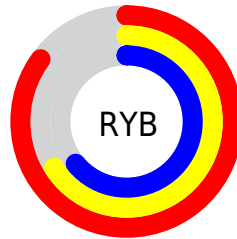
Distribution



Red (85%)

Green (65%)

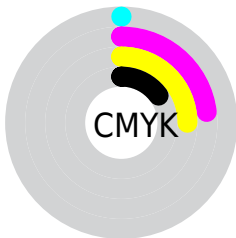
Blue (64%)



Red (85%)

Yellow (66%)

Blue (64%)

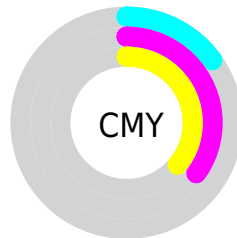


Cyan (0%)

Magenta (23%)

Yellow (25%)

Black (15%)



Cyan (15%)

Magenta (35%)

Yellow (36%)

Brightness & Saturation Gradients

These gradients show how the Hex color D8A7A2 changes by changing the brightness by 10 percent. The first figure shows a shift by +10% for each color and the second figure -10%.

Similar to the brightness gradients but the following saturation gradients show a change of the Hex color D8A7A2 by changing the saturation by 10% instead.

 D8A7A2

 D8A7A2

FFFFFF

 BC8C88

 FFDED9

 A0736E

 FFFBF5

 855A56

 6B423F

 522C29

 3A1615

 250000

 000000

 D8A7A2

 D8A7A2

 D8938C

 D8BBB8

 D88077

 D8CECD

 D86C61

 D8E2E3

 D8594C

 D8F5F8

 D84536

 D8FFFF

 D83120

 D81E0B

 D81400

Harmonies

Analogous

The Analogous color harmony consists of three colors that are next to each other on the color wheel.



D6A6B4



D8A7A2



D0AB94

Triad

The Triadic color harmony groups three colors that are evenly spaced from another and form a triangle on the color wheel.



D8A7A2



99BB9F



9DB4D6

Complementary

The Complementary color scheme is a pair of colors which are on the opposite of each other on the color wheel.



D8A7A2



A2D3D8

Split Complementary

Split-complementary colors differ from the complementary color scheme. The scheme consists of three colors, the original color and two neighbors of the complement color.



89BAD1



D8A7A2



88BDB1

Square

The Square scheme is like the rectangle color scheme, but the four colors are evenly spaced on the color wheel.



D8A7A2



AEB793



82BDC3



B5AED2

Rectangle

The Rectangle color scheme consists of four colors that form a rectangle on the color wheel.



D8A7A2



C7AF90



82BDC3



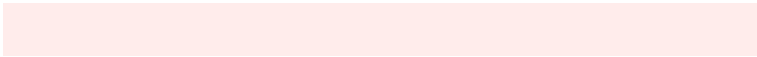
96B6D6

Sweetspot

The Sweet Spot groups the original color and five complimentary colors.



D8A7A2



FFECEB



D8A2D4



807473



000000



808080

Same Dimension

The Same Dimension uses a secret algorithm to generate beautiful new colors.



D8A7A2



FFBAB3



D8C2A2



6B6160



AB1000



2B0400

Inverse Universe

The Inverse Universe completely reimagines the original color for something new.



A2D3D8



B3F8FF



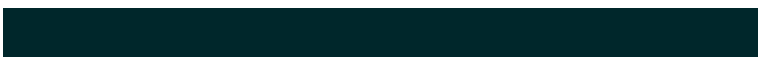
A2B9D8



606A6B



009BAB



00272B

Previews

White Background



This preview shows how the Hex color D8A7A2 looks on a white background.

Color Contrast Check

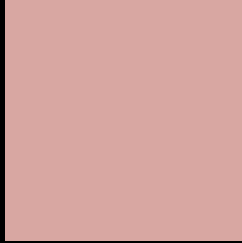
Large Text (above 18pt) WCAG AA × Fail

Any Text WCAG AA × Fail

Large Text (above 18pt) WCAG AAA × Fail

Any Text WCAG AAA × Fail

Black Background



This preview shows how the Hex color D8A7A2 looks on a black background.

Color Contrast Check

Large Text (above 18pt) WCAG AA ✓ Pass

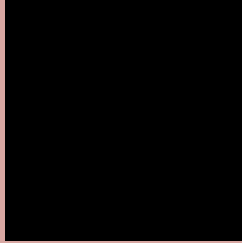
Any Text WCAG AA ✓ Pass

Large Text (above 18pt) WCAG AAA ✓ Pass

Any Text WCAG AAA ✓ Pass

If you want to check with other color combinations, try the [Color Contrast Checker](#).

Hex D8A7A2 Background



This preview shows how black text looks on a background with the Hex color D8A7A2.

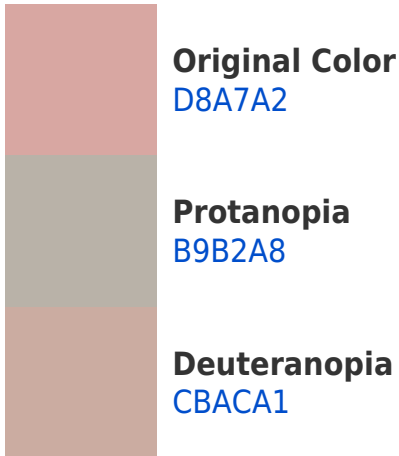


This preview shows how white text looks on a background with the Hex color D8A7A2.

Color Blindness Simulation

Color vision deficiency is a very complex topic, and I could not describe the different causes any better than Wikipedia does, so if you want to learn more, you should check out their [article about color blindness](#).

Dichromacy





Tritanopia
DAA5B1

Trichromacy



Original Color
D8A7A2

Protanomaly
C4AEA6

Deuteranomaly
D0AAA1

Tritanomaly
D9A6AC

Monochromacy



Original Color
D8A7A2

Achromatopsia
B5B5B5

Achromatomaly
C2B0AE

CSS Examples

Text

The CSS property to change the color of the text to Hex D8A7A2 is called "color". The color property can be set on classes, ids or directly on the HTML element.

This example shows how text in the color #D8A7A2 looks like.

```
.text, #text, p{  
    color:#D8A7A2  
}
```

If you want to add a text shadow in that color use the text-shadow property, you can generate a text shadow directly with our [CSS Text Shadow Generator](#).

Here you see how black text with a 4 pixel #D8A7A2 colored shadow looks like.

```
.shadow{ text-shadow: 4px 4px 2px #D8A7A2
}
```

Border

The CSS property to change the border of an element to Hex D8A7A2 is called "border". The border property can be set on classes, ids or directly on the HTML element.

This example shows the color as border, it can be applied via the CSS property "border" or "border-color".

```
.border, #border, table{ border:4px solid
#D8A7A2 }
```

If only the border color should be changed use the property `border-color`.

```
.border{ border-color:#D8A7A2 }
```

If you want to add a box shadow in that color use:

Here you see how a box with a 4 pixel #D8A7A2 colored shadow looks like.

```
.boxshadow{ -moz-box-shadow:4px 4px 4px  
4px #D8A7A2; -webkit-box-shadow:4px 4px  
4px 4px #D8A7A2; box-shadow:4px 4px 4px  
4px #D8A7A2 }
```

Background

The CSS property to change the background color of an element to Hex D8A7A2 is called "background". The background property can be set on classes, ids or directly on the HTML element.

```
.background, #background, body{  
background:#D8A7A2 }
```

If only the background color should be changed can be used:

```
.background{ background-color:#D8A7A2 }
```

This example shows the color as background, it is applied via the CSS property "background".

To optimize and compress your CSS code, you can use our [online CSS compressor and optimizer](#) based on csstidy. If you want to create a linear or radial gradient as background or border, check our [CSS Gradient Generator](#).

Hey! You found this booklet interesting? Support Converting Colors with the new Membership Option!

The pro membership hides all ads, plus gives you double the colors in the color bucket, and more awesome pro features!

[Learn more, Memberships starting at \\$2.50/m!](#)

**Follow me
on Twitter!**

@ConvertingColor