

Converting Colors

Hex(D8AD84)

Have a look what the booklet for
Hex(D8AD84) contains.

Hex(D8AD84)	3
<i>Conversions</i>	4
<i>Details</i>	6
<i>Harmonies</i>	11
<i>Previews</i>	23
<i>Color Blindness Simulation</i>	26
<i>CSS Examples</i>	29

Color

Hex(D8AD84)

Conversions

Conversions Part 1

Format	Color
Hex	D8AD84
RGB	216, 173, 132
RGB Percent	85%, 68%, 52%
CMY	0.1529, 0.3216, 0.4824
CMYK	0.00, 0.20, 0.39, 0.15
HSL	29°, 52%, 68%
HSV	29°, 39%, 85%
XYZ	47.4273, 46.1520, 28.2383
YIQ	181.1830, 38.7890, -3.6350

Conversions

Conversions Part 2

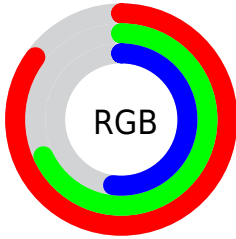
Format	Color
R _Y B	216, 212, 132
Decimal	14200196
CIE Lab	73.64, 10.19, 27.02
CIE LCh	74, 28.872, 69.342
Yxy	46.1520, 0.3893, 0.3789
Android (android.graphics.Color)	4292390276 (0xFFD8AD84)
YUV	181.1830, -24.2472, 30.5345
Hunter-Lab	67.9353, 5.7286, 22.9099

Details

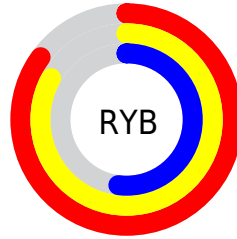
The Hex color **D8AD84** is a light color, and the websafe version is hex **CC9966**. A complement of this color would be **84AFD8**, and the grayscale version is **B5B5B5**.

A 20% lighter version of the original color is **FFE4B9**, and **A07952** is the 20% darker color. If you saturate the color by 10%, you get **D8A26E**, and if you desaturate by 10%, it is **D8B89A**.

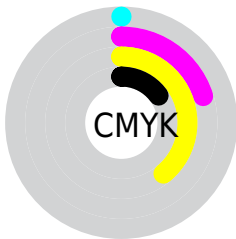
Distribution



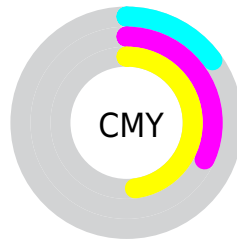
- Red (85%)
- Green (68%)
- Blue (52%)



- Red (85%)
- Yellow (83%)
- Blue (52%)



- Cyan (0%)
- Magenta (20%)
- Yellow (39%)
- Black (15%)



- Cyan (15%)
- Magenta (32%)
- Yellow (48%)

Brightness & Saturation Gradients

These gradients show how the Hex color D8AD84 changes by changing the brightness by 10 percent. The first figure shows a shift by +10% for each color and the second figure -10%.

Similar to the brightness gradients but the following saturation gradients show a change of the Hex color D8AD84 by changing the saturation by 10% instead.

 D8AD84

 D8AD84

FFFFFF

 BB926B

 FFE4B9

 A07952

 FFFFD5

 84603B

 FFFFF2

 6A4824

 50320E

 381D00

 200500

 000000

 D8AD84

 D8AD84

 D8A26E

 D8B89A

 D89759

 D8C3AF

 D88C43

 D8CEC5

 D8812E

 D8D9DA

 D87618

 D8E4F0

 D86B02

 D8EFFF

 D86900

 D8FAFF

 D8FFFF

Harmonies

Analogous

The Analogous color harmony consists of three colors that are next to each other on the color wheel.



E7A595



D8AD84



C0B680

Triad

The Triadic color harmony groups three colors that are evenly spaced from another and form a triangle on the color wheel.



D8AD84



6BC4BD



C3ABDE

Complementary

The Complementary color scheme is a pair of colors which are on the opposite of each other on the color wheel.



D8AD84



84AFD8

Split Complementary

Split-complementary colors differ from the complementary color scheme. The scheme consists of three colors, the original color and two neighbors of the complement color.



9FB5E9



D8AD84



65C2D6

Square

The Square scheme is like the rectangle color scheme, but the four colors are evenly spaced on the color wheel.



D8AD84



84C2A1



7BBDE6



DEA4C8

Rectangle

The Rectangle color scheme consists of four colors that form a rectangle on the color wheel.



D8AD84



ACBB86



7BBDE6



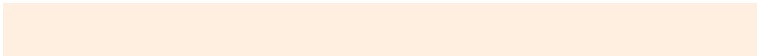
B8AEE3

Sweetspot

The Sweet Spot groups the original color and five complimentary colors.



D8AD84



FFEFE0



D884AF



80766E



000000



808080

Same Dimension

The Same Dimension uses a secret algorithm to generate beautiful new colors.



D8AD84



FFC287



D8D784



6B6660



AB5300



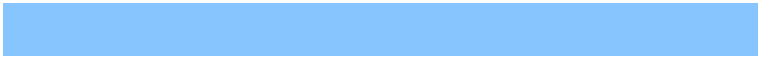
2B1500

Inverse Universe

The Inverse Universe completely reimagines the original color for something new.



84AFD8



87C5FF



8485D8



60666B



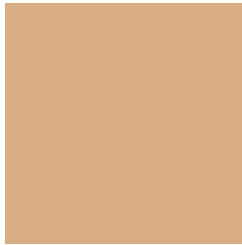
0057AB



00162B

Previews

White Background



This preview shows how the Hex color D8AD84 looks on a white background.

Color Contrast Check

Large Text (above 18pt) WCAG AA × Fail

Any Text WCAG AA × Fail

Large Text (above 18pt) WCAG AAA × Fail

Any Text WCAG AAA × Fail

Black Background



This preview shows how the Hex color D8AD84 looks on a black background.

Color Contrast Check

Large Text (above 18pt) WCAG AA ✓ Pass

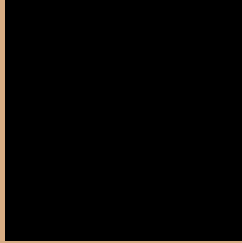
Any Text WCAG AA ✓ Pass

Large Text (above 18pt) WCAG AAA ✓ Pass

Any Text WCAG AAA ✓ Pass

If you want to check with other color combinations, try the [Color Contrast Checker](#).

Hex D8AD84 Background



This preview shows how black text looks on a background with the Hex color D8AD84.

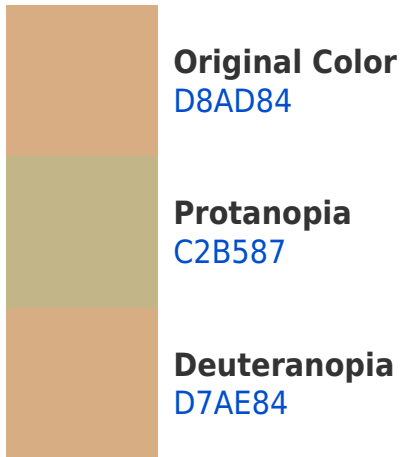


This preview shows how white text looks on a background with the Hex color D8AD84.

Color Blindness Simulation

Color vision deficiency is a very complex topic, and I could not describe the different causes any better than Wikipedia does, so if you want to learn more, you should check out their [article about color blindness](#).

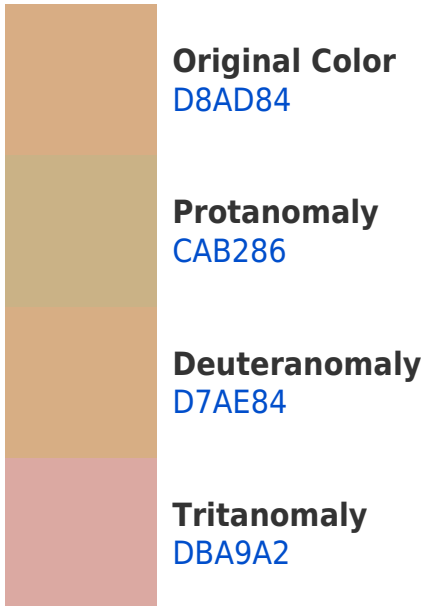
Dichromacy





Tritanopia
DDA7B3

Trichromacy



Monochromacy



CSS Examples

Text

The CSS property to change the color of the text to Hex D8AD84 is called "color". The color property can be set on classes, ids or directly on the HTML element.

This example shows how text in the color #D8AD84 looks like.

```
.text, #text, p{  
  color:#D8AD84  
}
```

If you want to add a text shadow in that color use the text-shadow property, you can generate a text shadow directly with our [CSS Text Shadow Generator](#).

Here you see how black text with a 4 pixel #D8AD84 colored shadow looks like.

```
.shadow{ text-shadow: 4px 4px 2px #D8AD84
}
```

Border

The CSS property to change the border of an element to Hex D8AD84 is called "border". The border property can be set on classes, ids or directly on the HTML element.

This example shows the color as border, it can be applied via the CSS property "border" or "border-color".

```
.border, #border, table{ border:4px solid
#D8AD84 }
```

If only the border color should be changed use the property `border-color`.

```
.border{ border-color:#D8AD84 }
```

If you want to add a box shadow in that color use:

Here you see how a box with a 4 pixel #D8AD84 colored shadow looks like.

```
.boxshadow{ -moz-box-shadow:4px 4px 4px  
4px #D8AD84; -webkit-box-shadow:4px 4px  
4px 4px #D8AD84; box-shadow:4px 4px 4px  
4px #D8AD84 }
```

Background

The CSS property to change the background color of an element to Hex D8AD84 is called "background". The background property can be set on classes, ids or directly on the HTML element.

```
.background, #background, body{  
background:#D8AD84 }
```

If only the background color should be changed can be used:

```
.background{ background-color:#D8AD84 }
```

This example shows the color as background, it is applied via the CSS property "background".

To optimize and compress your CSS code, you can use our [online CSS compressor and optimizer](#) based on csstidy. If you want to create a linear or radial gradient as background or border, check our [CSS Gradient Generator](#).

Hey! You found this booklet interesting? Support Converting Colors with the new Membership Option!

The pro membership hides all ads, plus gives you double the colors in the color bucket, and more awesome pro features!

[Learn more, Memberships starting at \\$2.50/m!](#)

**Follow me
on Twitter!**

@ConvertingColor