

Converting Colors

Hex(D8AE9E)

Have a look what the booklet for
Hex(D8AE9E) contains.

Hex(D8AE9E)	3
<i>Conversions</i>	4
<i>Details</i>	6
<i>Harmonies</i>	11
<i>Previews</i>	23
<i>Color Blindness Simulation</i>	26
<i>CSS Examples</i>	29

Color

Hex(D8AE9E)

Conversions

Conversions Part 1

Format	Color
Hex	D8AE9E
RGB	216, 174, 158
RGB Percent	85%, 68%, 62%
CMY	0.1529, 0.3176, 0.3804
CMYK	0.00, 0.19, 0.27, 0.15
HSL	17°, 43%, 73%
HSV	17°, 27%, 85%
XYZ	49.6265, 47.3397, 38.8696
YIQ	184.7340, 30.1680, 3.9280

Conversions

Conversions Part 2

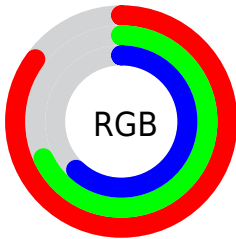
Format	Color
R _Y B	216, 180, 158
Decimal	14200478
CIE Lab	74.41, 12.94, 14.00
CIE LCh	74, 19.059, 47.252
Yxy	47.3397, 0.3653, 0.3485
Android (android.graphics.Color)	4292390558 (0xFFD8AE9E)
YUV	184.7340, -13.1799, 27.4203
Hunter-Lab	68.8038, 8.3410, 14.6677

Details

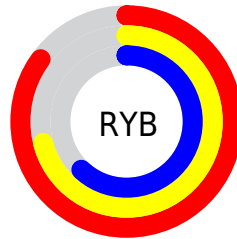
The Hex color **D8AE9E** is a light color, and the websafe version is hex **CC9999**. A complement of this color would be **9EC8D8**, and the grayscale version is **B9B9B9**.

A 20% lighter version of the original color is **FFE6D5**, and **A07A6B** is the 20% darker color. If you saturate the color by 10%, you get **D89E88**, and if you desaturate by 10%, it is **D8BEB4**.

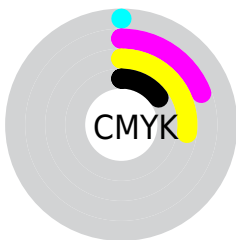
Distribution



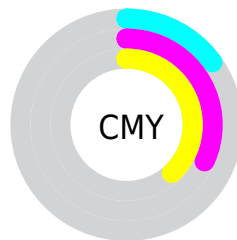
- Red (85%)
- Green (68%)
- Blue (62%)



- Red (85%)
- Yellow (71%)
- Blue (62%)



- Cyan (0%)
- Magenta (19%)
- Yellow (27%)
- Black (15%)



- Cyan (15%)
- Magenta (32%)
- Yellow (38%)

Brightness & Saturation Gradients

These gradients show how the Hex color D8AE9E changes by changing the brightness by 10 percent. The first figure shows a shift by +10% for each color and the second figure -10%.

Similar to the brightness gradients but the following saturation gradients show a change of the Hex color D8AE9E by changing the saturation by 10% instead.

 D8AE9E

 D8AE9E

FFFFFF

 BC9384

 FFE6D5

 A07A6B

 FFFFF1

 856152

 6B493B

 523226

 3A1D11

 240500

 000000

 D8AE9E

 D8AE9E

 D89E88

 D8BEB4

 D88F73

 D8CDC9

 D87F5D

 D8DDDF

 D86F48

 D8EDF4

 D86032

 D8FCFF

 D8501C

 D8FFFF

 D84107

 D83C00

Harmonies

Analogous

The Analogous color harmony consists of three colors that are next to each other on the color wheel.



DCABAD



D8AE9E



CCB395

Triad

The Triadic color harmony groups three colors that are evenly spaced from another and form a triangle on the color wheel.



D8AE9E



94C1AF



B0B5D8

Complementary

The Complementary color scheme is a pair of colors which are on the opposite of each other on the color wheel.



D8AE9E



9EC8D8

Split Complementary

Split-complementary colors differ from the complementary color scheme. The scheme consists of three colors, the original color and two neighbors of the complement color.



9ABBD9



D8AE9E



89C1C1

Square

The Square scheme is like the rectangle color scheme, but the four colors are evenly spaced on the color wheel.



D8AE9E



A6BE9F



8BBFD0



C6AFCF

Rectangle

The Rectangle color scheme consists of four colors that form a rectangle on the color wheel.



D8AE9E



C0B794



8BBFD0



A9B7D9

Sweetspot

The Sweet Spot groups the original color and five complimentary colors.



D8AE9E



FFF0EB



D89EC9



807673



000000



808080

Same Dimension

The Same Dimension uses a secret algorithm to generate beautiful new colors.



D8AE9E



FFC4AD



D8CA9E



6B6360



AB2F00



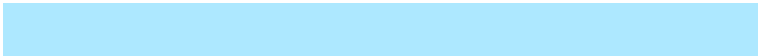
2B0C00

Inverse Universe

The Inverse Universe completely reimagines the original color for something new.



9EC8D8



ADE8FF



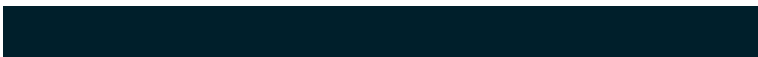
9EACD8



60686B



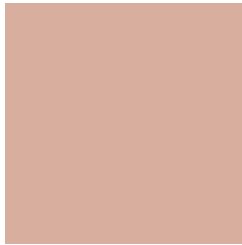
007CAB



001F2B

Previews

White Background



This preview shows how the Hex color D8AE9E looks on a white background.

Color Contrast Check

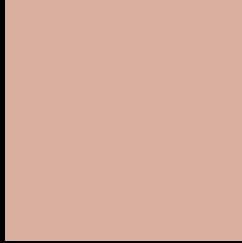
Large Text (above 18pt) WCAG AA × Fail

Any Text WCAG AA × Fail

Large Text (above 18pt) WCAG AAA × Fail

Any Text WCAG AAA × Fail

Black Background



This preview shows how the Hex color D8AE9E looks on a black background.

Color Contrast Check

Large Text (above 18pt) WCAG AA ✓ Pass

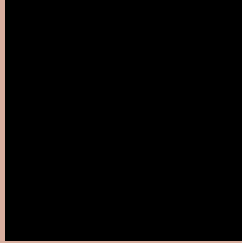
Any Text WCAG AA ✓ Pass

Large Text (above 18pt) WCAG AAA ✓ Pass

Any Text WCAG AAA ✓ Pass

If you want to check with other color combinations, try the [Color Contrast Checker](#).

Hex D8AE9E Background



This preview shows how black text looks on a background with the Hex color D8AE9E.

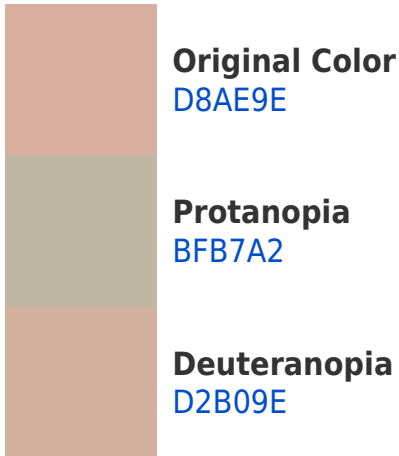


This preview shows how white text looks on a background with the Hex color D8AE9E.

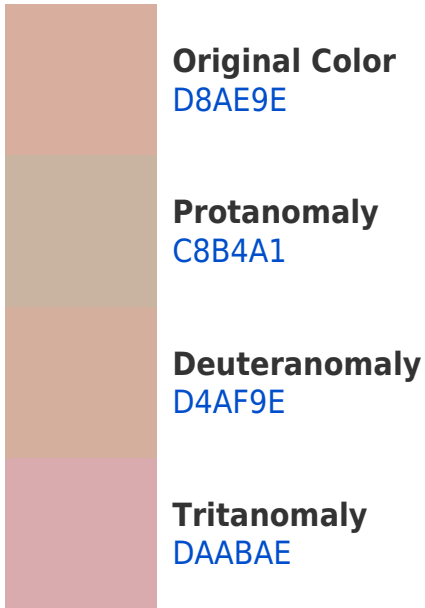
Color Blindness Simulation

Color vision deficiency is a very complex topic, and I could not describe the different causes any better than Wikipedia does, so if you want to learn more, you should check out their [article about color blindness](#).

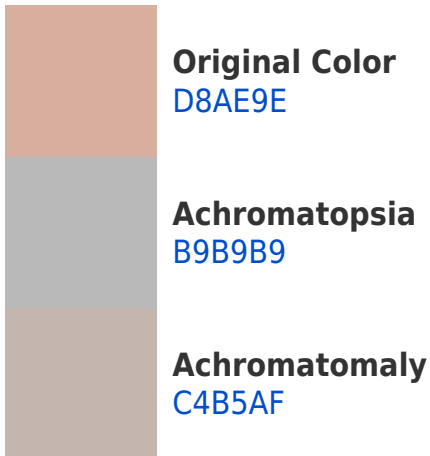
Dichromacy



Trichromacy



Monochromacy



CSS Examples

Text

The CSS property to change the color of the text to Hex D8AE9E is called "color". The color property can be set on classes, ids or directly on the HTML element.

This example shows how text in the color #D8AE9E looks like.

```
.text, #text, p{  
    color:#D8AE9E  
}
```

If you want to add a text shadow in that color use the text-shadow property, you can generate a text shadow directly with our [CSS Text Shadow Generator](#).

Here you see how black text with a 4 pixel #D8AE9E colored shadow looks like.

```
.shadow{ text-shadow: 4px 4px 2px #D8AE9E
}
```

Border

The CSS property to change the border of an element to Hex D8AE9E is called "border". The border property can be set on classes, ids or directly on the HTML element.

This example shows the color as border, it can be applied via the CSS property "border" or "border-color".

```
.border, #border, table{ border:4px solid
#D8AE9E }
```

If only the border color should be changed use the property `border-color`.

```
.border{ border-color:#D8AE9E }
```

If you want to add a box shadow in that color use:

Here you see how a box with a 4 pixel #D8AE9E colored shadow looks like.

```
.boxshadow{ -moz-box-shadow:4px 4px 4px  
4px #D8AE9E; -webkit-box-shadow:4px 4px  
4px 4px #D8AE9E; box-shadow:4px 4px 4px  
4px #D8AE9E }
```

Background

The CSS property to change the background color of an element to Hex D8AE9E is called "background". The background property can be set on classes, ids or directly on the HTML element.

```
.background, #background, body{  
background:#D8AE9E }
```

If only the background color should be changed can be used:

```
.background{ background-color:#D8AE9E }
```

This example shows the color as background, it is applied via the CSS property "background".

To optimize and compress your CSS code, you can use our [online CSS compressor and optimizer](#) based on csstidy. If you want to create a linear or radial gradient as background or border, check our [CSS Gradient Generator](#).

Hey! You found this booklet interesting? Support Converting Colors with the new Membership Option!

The pro membership hides all ads, plus gives you double the colors in the color bucket, and more awesome pro features!

[Learn more, Memberships starting at \\$2.50/m!](#)

**Follow me
on Twitter!**

@ConvertingColor