

# Converting Colors

Hex(D8B189)

Have a look what the booklet for  
Hex(D8B189) contains.

<b>Hex(D8B189)</b> .....	3
<b><i>Conversions</i></b> .....	4
<b><i>Details</i></b> .....	6
<b><i>Harmonies</i></b> .....	11
<b><i>Previews</i></b> .....	23
<b><i>Color Blindness Simulation</i></b> .....	26
<b><i>CSS Examples</i></b> .....	29

# **Color**

**Hex(D8B189)**

# Conversions

## Conversions Part 1

Format	Color
Hex	D8B189
RGB	216, 177, 137
RGB Percent	85%, 69%, 54%
CMY	0.1529, 0.3059, 0.4627
CMYK	0.00, 0.18, 0.37, 0.15
HSL	30°, 50%, 69%
HSV	30°, 37%, 85%
XYZ	48.5564, 47.8494, 30.3436
YIQ	184.1010, 36.0840, -4.1720

# Conversions

## Conversions Part 2

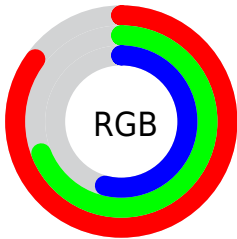
Format	Color
<a href="#">RYB</a>	<a href="#">214, 216, 137</a>
Decimal	<a href="#">14201225</a>
<a href="#">CIELab</a>	<a href="#">74.73, 8.63, 25.79</a>
<a href="#">CIElCh</a>	<a href="#">75, 27.199, 71.505</a>
<a href="#">Yxy</a>	<a href="#">47.8494, 0.3831, 0.3775</a>
<a href="#">Android (android.graphics.Color)</a>	<a href="#">4292391305 (0xFFD8B189)</a>
<a href="#">YUV</a>	<a href="#">184.1010, -23.2208, 27.9754</a>
<a href="#">Hunter-Lab</a>	<a href="#">69.1732, 4.2456, 22.4131</a>

# Details

The Hex color **D8B189** is a light color, and the websafe version is hex **CC9966**. A complement of this color would be **89B0D8**, and the grayscale version is **B8B8B8**.

A 20% lighter version of the original color is **FFE9BF**, and **A07C57** is the 20% darker color. If you saturate the color by 10%, you get **D8A673**, and if you desaturate by 10%, it is **D8BC9F**.

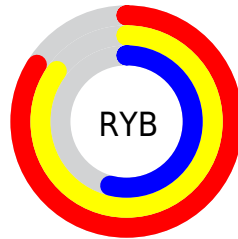
# Distribution



Red (85%)

Green (69%)

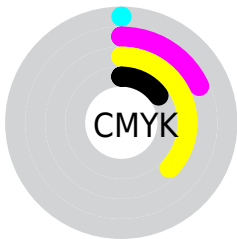
Blue (54%)



Red (84%)

Yellow (85%)

Blue (54%)

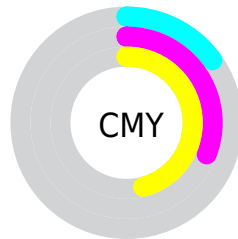


Cyan (0%)

Magenta (18%)

Yellow (37%)

Black (15%)



Cyan (15%)

Magenta (31%)

Yellow (46%)

# Brightness & Saturation Gradients

These gradients show how the Hex color D8B189 changes by changing the brightness by 10 percent. The first figure shows a shift by +10% for each color and the second figure -10%.

Similar to the brightness gradients but the following saturation gradients show a change of the Hex color D8B189 by changing the saturation by 10% instead.



 D8B189

FFFFFF

 FFE9BF

 FFFFDB

 FFFFF7


 D8B189

 BC966F

 A07C57

 85643F

 6A4C28

 513513

 392000

 210A00

 000000

 D8B189

 D8B189

 D8A673

 D8BC9F

 D89C5E

 D8C6B4

 D89148

 D8D1CA

 D88633

 D8DCDF

 D87C1D

 D8E6F5

 D87107

 D8F1FF

 D86D00

 D8FCFF

 D8FFFF

# Harmonies

## Analogous

The Analogous color harmony consists of three colors that are next to each other on the color wheel.



E7AA98



D8B189



C0B987

# Triad

The Triadic color harmony groups three colors that are evenly spaced from another and form a triangle on the color wheel.



D8B189



72C6C1



C8AEDD

# Complementary

The Complementary color scheme is a pair of colors which are on the opposite of each other on the color wheel.



D8B189



89B0D8

# Split Complementary

Split-complementary colors differ from the complementary color scheme. The scheme consists of three colors, the original color and two neighbors of the complement color.



A7B7E9



D8B189



6FC4D8

# Square

The Square scheme is like the rectangle color scheme, but the four colors are evenly spaced on the color wheel.



D8B189



88C5A7



84BFE7



E0A8C8

# Rectangle

The Rectangle color scheme consists of four colors that form a rectangle on the color wheel.



D8B189



AEBE8D



84BFE7



BDB1E2

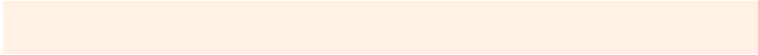


# Sweetspot

The Sweet Spot groups the original color and five complimentary colors.



D8B189



FFF1E3



D889B1



80776F



000000



808080



# Same Dimension

The Same Dimension uses a secret algorithm to generate beautiful new colors.



D8B189



FFC88F



D8D889



6B6660



AB5700



2B1600

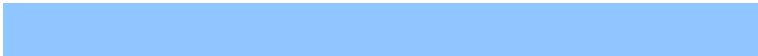


# Inverse Universe

The Inverse Universe completely reimagines the original color for something new.



89B0D8



8FC6FF



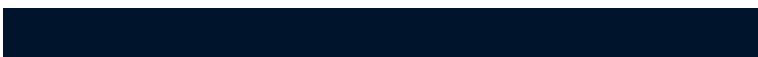
8989D8



60666B



0054AB

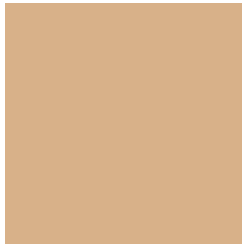


00152B



# Previews

## White Background



This preview shows how the Hex color D8B189 looks on a white background.

## Color Contrast Check

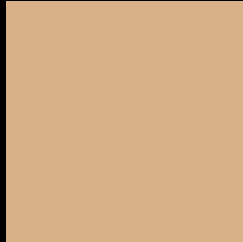
Large Text (above 18pt) WCAG AA × Fail

Any Text WCAG AA × Fail

Large Text (above 18pt) WCAG AAA × Fail

Any Text WCAG AAA × Fail

# Black Background



This preview shows how the Hex color D8B189 looks on a black background.

## Color Contrast Check

Large Text (above 18pt) WCAG AA ✓ Pass

Any Text WCAG AA ✓ Pass

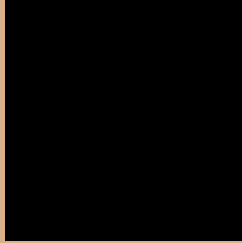
Large Text (above 18pt) WCAG AAA ✓ Pass

Any Text WCAG AAA ✓ Pass

If you want to check with other color combinations, try the [Color Contrast Checker](#).



## Hex D8B189 Background



This preview shows how black text looks on a background with the Hex color D8B189.



This preview shows how white text looks on a background with the Hex color D8B189.

# Color Blindness Simulation

Color vision deficiency is a very complex topic, and I could not describe the different causes any better than Wikipedia does, so if you want to learn more, you should check out their [article about color blindness](#).

## Dichromacy



**Original Color**  
D8B189

**Protanopia**  
C5B88C

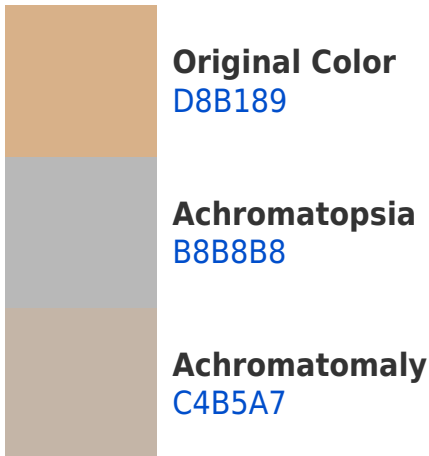
**Deuteranopia**  
D9B089



# Trichromacy



# Monochromacy



# CSS Examples

## Text

The CSS property to change the color of the text to Hex D8B189 is called "color". The color property can be set on classes, ids or directly on the HTML element.

This example shows how text in the color #D8B189 looks like.

```
.text, #text, p{  
    color:#D8B189  
}
```

If you want to add a text shadow in that color use the text-shadow property, you can generate a text shadow directly with our [CSS Text Shadow Generator](#).

Here you see how black text with a 4 pixel #D8B189 colored shadow looks like.

```
.shadow{ text-shadow: 4px 4px 2px #D8B189
}
```

## Border

The CSS property to change the border of an element to Hex D8B189 is called "border". The border property can be set on classes, ids or directly on the HTML element.

This example shows the color as border, it can be applied via the CSS property "border" or "border-color".

```
.border, #border, table{ border:4px solid
#D8B189 }
```

If only the border color should be changed use the property `border-color`.

```
.border{ border-color:#D8B189 }
```

If you want to add a box shadow in that color use:

Here you see how a box with a 4 pixel #D8B189 colored shadow looks like.

```
.boxshadow{ -moz-box-shadow:4px 4px 4px  
4px #D8B189; -webkit-box-shadow:4px 4px  
4px 4px #D8B189; box-shadow:4px 4px 4px  
4px #D8B189 }
```

# Background

The CSS property to change the background color of an element to Hex D8B189 is called "background". The background property can be set on classes, ids or directly on the HTML element.

```
.background, #background, body{  
background:#D8B189 }
```

If only the background color should be changed can be used:

```
.background{ background-color:#D8B189 }
```

This example shows the color as background, it is applied via the CSS property "background".

To optimize and compress your CSS code, you can use our [online CSS compressor and optimizer](#) based on csstidy. If you want to create a linear or radial gradient as background or border, check our [CSS Gradient Generator](#).



Hey! You found this booklet interesting? Support Converting Colors with the new Membership Option!

The pro membership hides all ads, plus gives you double the colors in the color bucket, and more awesome pro features!

**[Learn more, Memberships starting at \\$2.50/m!](#)**

**Follow me  
on Twitter!**

@ConvertingColor