

Converting Colors

Hex(D8B2AB)

Have a look what the booklet for
Hex(D8B2AB) contains.

Hex(D8B2AB)	3
<i>Conversions</i>	4
<i>Details</i>	6
<i>Harmonies</i>	11
<i>Previews</i>	23
<i>Color Blindness Simulation</i>	26
<i>CSS Examples</i>	29

Color

Hex(D8B2AB)

Conversions

Conversions Part 1

Format	Color
Hex	D8B2AB
RGB	216, 178, 171
RGB Percent	85%, 70%, 67%
CMY	0.1529, 0.3020, 0.3294
CMYK	0.00, 0.18, 0.21, 0.15
HSL	9°, 37%, 76%
HSV	9°, 21%, 85%
XYZ	51.5900, 49.3800, 45.3403
YIQ	188.5640, 24.8950, 5.8790

Conversions

Conversions Part 2

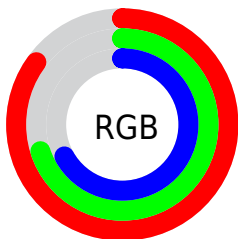
Format	Color
RYB	216, 179, 171
Decimal	14201515
CIELab	75.69, 12.66, 8.73
CIElCh	76, 15.377, 34.598
Yxy	49.3800, 0.3526, 0.3375
Android (android.graphics.Color)	4292391595 (0xFFD8B2AB)
YUV	188.5640, -8.6591, 24.0614
Hunter-Lab	70.2709, 8.0732, 10.9345

Details

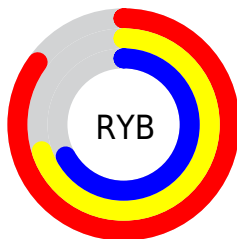
The Hex color **D8B2AB** is a light color, and the websafe version is hex **CC9999**. A complement of this color would be **ABD1D8**, and the grayscale version is **BDBDBD**.

A 20% lighter version of the original color is **FFEAE2**, and **A17D77** is the 20% darker color. If you saturate the color by 10%, you get **D8A095**, and if you desaturate by 10%, it is **D8C4C1**.

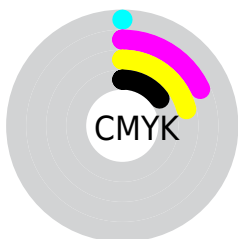
Distribution



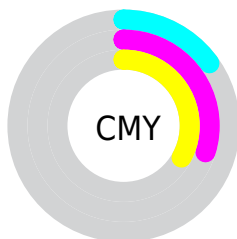
- Red (85%)
- Green (70%)
- Blue (67%)



- Red (85%)
- Yellow (70%)
- Blue (67%)



- Cyan (0%)
- Magenta (18%)
- Yellow (21%)
- Black (15%)



- Cyan (15%)
- Magenta (30%)
- Yellow (33%)

Brightness & Saturation Gradients

These gradients show how the Hex color D8B2AB changes by changing the brightness by 10 percent. The first figure shows a shift by +10% for each color and the second figure -10%.

Similar to the brightness gradients but the following saturation gradients show a change of the Hex color D8B2AB by changing the saturation by 10% instead.

 D8B2AB

 D8B2AB

FFFFFF

 BC9790

 FFEAE2

 A17D77

 86645E

 6C4C47

 533530

 3B201B

 260A00

 000000

 D8B2AB

 D8B2AB

 D8A095

 D8C4C1

 D88E80

 D8D6D6

 D87B6A

 D8E9EC

 D86955

 D8FBFF

 D8573F

 D8FFFF

 D84529

 D83214

 D82200

Harmonies

Analogous

The Analogous color harmony consists of three colors that are next to each other on the color wheel.



D8B1B9



D8B2AB



D1B6A1

Triad

The Triadic color harmony groups three colors that are evenly spaced from another and form a triangle on the color wheel.



D8B2AB



A4C2AE



AEBBD6

Complementary

The Complementary color scheme is a pair of colors which are on the opposite of each other on the color wheel.



D8B2AB



ABD1D8

Split Complementary

Split-complementary colors differ from the complementary color scheme. The scheme consists of three colors, the original color and two neighbors of the complement color.



9EBFD4



D8B2AB



99C3BC

Square

The Square scheme is like the rectangle color scheme, but the four colors are evenly spaced on the color wheel.



D8B2AB



B4BFA3



96C2CA



C0B6D2

Rectangle

The Rectangle color scheme consists of four colors that form a rectangle on the color wheel.



D8B2AB



C9B99F



96C2CA



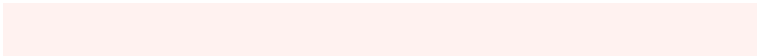
A8BDD6

Sweetspot

The Sweet Spot groups the original color and five complimentary colors.



D8B2AB



FFF2F0



D8ABD1



807877



000000



808080

Same Dimension

The Same Dimension uses a secret algorithm to generate beautiful new colors.



D8B2AB



FFC9BF



D8C8AB



6B6260



AB1B00



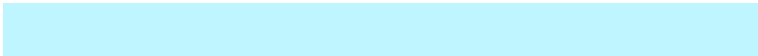
2B0700

Inverse Universe

The Inverse Universe completely reimagines the original color for something new.



ABD1D8



BFF5FF



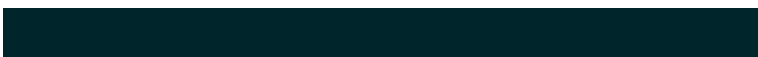
ABBBD8



60696B



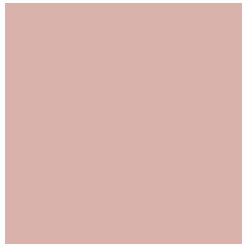
0090AB



00252B

Previews

White Background



This preview shows how the Hex color D8B2AB looks on a white background.

Color Contrast Check

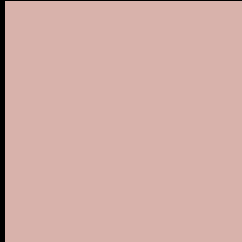
Large Text (above 18pt) WCAG AA × Fail

Any Text WCAG AA × Fail

Large Text (above 18pt) WCAG AAA × Fail

Any Text WCAG AAA × Fail

Black Background



This preview shows how the Hex color D8B2AB looks on a black background.

Color Contrast Check

Large Text (above 18pt) WCAG AA ✓ Pass

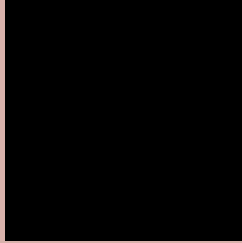
Any Text WCAG AA ✓ Pass

Large Text (above 18pt) WCAG AAA ✓ Pass

Any Text WCAG AAA ✓ Pass

If you want to check with other color combinations, try the [Color Contrast Checker](#).

Hex D8B2AB Background



This preview shows how black text looks on a background with the Hex color D8B2AB.

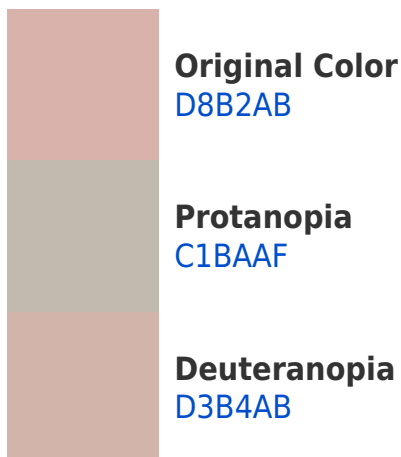


This preview shows how white text looks on a background with the Hex color D8B2AB.

Color Blindness Simulation

Color vision deficiency is a very complex topic, and I could not describe the different causes any better than Wikipedia does, so if you want to learn more, you should check out their [article about color blindness](#).

Dichromacy



Trichromacy



Original Color
D8B2AB

Protanomaly
C9B7AE

Deuteranomaly
D5B3AB

Tritanomaly
D9B0B6

Monochromacy



Original Color
D8B2AB

Achromatopsia
BDBDBD

Achromatomaly
C7B9B6

CSS Examples

Text

The CSS property to change the color of the text to Hex D8B2AB is called "color". The color property can be set on classes, ids or directly on the HTML element.

This example shows how text in the color #D8B2AB looks like.

```
.text, #text, p{  
    color:#D8B2AB  
}
```

If you want to add a text shadow in that color use the text-shadow property, you can generate a text shadow directly with our [CSS Text Shadow Generator](#).

Here you see how black text with a 4 pixel #D8B2AB colored shadow looks like.

```
.shadow{ text-shadow: 4px 4px 2px #D8B2AB  
}
```

Border

The CSS property to change the border of an element to Hex D8B2AB is called "border". The border property can be set on classes, ids or directly on the HTML element.

This example shows the color as border, it can be applied via the CSS property "border" or "border-color".

```
.border, #border, table{ border:4px solid  
#D8B2AB }
```

If only the border color should be changed use the property `border-color`.

```
.border{ border-color:#D8B2AB }
```

If you want to add a box shadow in that color use:

Here you see how a box with a 4 pixel #D8B2AB colored shadow looks like.

```
.boxshadow{ -moz-box-shadow:4px 4px 4px  
4px #D8B2AB; -webkit-box-shadow:4px 4px  
4px 4px #D8B2AB; box-shadow:4px 4px 4px  
4px #D8B2AB }
```

Background

The CSS property to change the background color of an element to Hex D8B2AB is called "background". The background property can be set on classes, ids or directly on the HTML element.

```
.background, #background, body{  
background:#D8B2AB }
```

If only the background color should be changed can be used:

```
.background{ background-color:#D8B2AB }
```

This example shows the color as background, it is applied via the CSS property "background".

To optimize and compress your CSS code, you can use our [online CSS compressor and optimizer](#) based on csstidy. If you want to create a linear or radial gradient as background or border, check our [CSS Gradient Generator](#).

Hey! You found this booklet interesting? Support Converting Colors with the new Membership Option!

The pro membership hides all ads, plus gives you double the colors in the color bucket, and more awesome pro features!

[Learn more, Memberships starting at \\$2.50/m!](#)

**Follow me
on Twitter!**

@ConvertingColor