

Converting Colors

Hex(D8B69F)

Have a look what the booklet for
Hex(D8B69F) contains.

| | |
|--|----|
| Hex(D8B69F) | 3 |
| <i>Conversions</i> | 4 |
| <i>Details</i> | 6 |
| <i>Harmonies</i> | 11 |
| <i>Previews</i> | 23 |
| <i>Color Blindness Simulation</i> | 26 |
| <i>CSS Examples</i> | 29 |

Color

Hex(D8B69F)

Conversions

Conversions Part 1

| Format | Color |
|-------------|---------------------------|
| Hex | D8B69F |
| RGB | 216, 182, 159 |
| RGB Percent | 85%, 71%, 62% |
| CMY | 0.1529, 0.2863, 0.3765 |
| CMYK | 0.00, 0.16, 0.26, 0.15 |
| HSL | 24°, 42%, 74% |
| HSV | 24°, 26%, 85% |
| XYZ | 51.3049, 50.5580, 39.8555 |
| YIQ | 189.5440, 27.6470, 0.0550 |

Conversions

Conversions Part 2

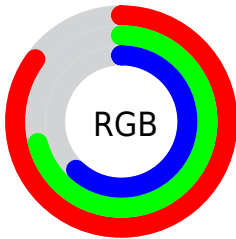
| Format | Color |
|-------------------------------------|--------------------------------|
| R_{YB} | 216, 198, 159 |
| Decimal | 14202527 |
| CIE _{Lab} | 76.41, 8.79, 16.26 |
| CIE _{LCh} | 76, 18.484, 61.615 |
| Yxy | 50.5580, 0.3620, 0.3567 |
| Android (android.graphics.Color) | 4292392607 (0xFFD8B69F) |
| YUV | 189.5440, -15.0582, 23.2019 |
| Hunter-Lab | 71.1042, 4.3635, 16.5395 |

Details

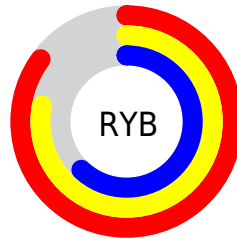
The Hex color **D8B69F** is a light color, and the websafe version is hex **CC9999**. A complement of this color would be **9FC1D8**, and the grayscale version is **BEBEBE**.

A 20% lighter version of the original color is **FFEED6**, and **A0816C** is the 20% darker color. If you saturate the color by 10%, you get **D8A989**, and if you desaturate by 10%, it is **D8C3B5**.

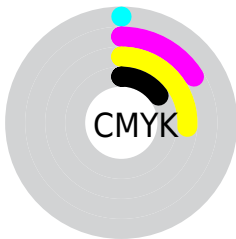
Distribution



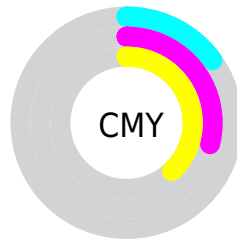
- Red (85%)
- Green (71%)
- Blue (62%)



- Red (85%)
- Yellow (78%)
- Blue (62%)



- Cyan (0%)
- Magenta (16%)
- Yellow (26%)
- Black (15%)



- Cyan (15%)
- Magenta (29%)
- Yellow (38%)

Brightness & Saturation Gradients

These gradients show how the Hex color D8B69F changes by changing the brightness by 10 percent. The first figure shows a shift by +10% for each color and the second figure -10%.

Similar to the brightness gradients but the following saturation gradients show a change of the Hex color D8B69F by changing the saturation by 10% instead.

 D8B69F

 D8B69F

FFFFFF

 BC9B85

 FFEED6

 A0816C

 FFFFF2

 866853

 6C503C

 533926

 3A2312

 240F00

 000000

 D8B69F

 D8B69F

 D8A989

 D8C3B5

 D89C74

 D8D0CA

 D88F5E

 D8DDE0

 D88249

 D8EAF5

 D87633

 D8F6FF

 D8691D

 D8FFFF

 D85C08

 D85700

Harmonies

Analogous

The Analogous color harmony consists of three colors that are next to each other on the color wheel.



E0B2AB



D8B69F



C9BC9B

Triad

The Triadic color harmony groups three colors that are evenly spaced from another and form a triangle on the color wheel.



D8B69F



94C6BD



C1B8DA

Complementary

The Complementary color scheme is a pair of colors which are on the opposite of each other on the color wheel.



D8B69F



9FC1D8

Split Complementary

Split-complementary colors differ from the complementary color scheme. The scheme consists of three colors, the original color and two neighbors of the complement color.



ABBEDE



D8B69F



8FC6CE

Square

The Square scheme is like the rectangle color scheme, but the four colors are evenly spaced on the color wheel.



D8B69F



A3C5AC



98C3DA



D4B3CD

Rectangle

The Rectangle color scheme consists of four colors that form a rectangle on the color wheel.



D8B69F



BDBF9D



98C3DA



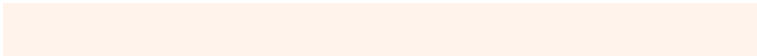
B9BADC

Sweetspot

The Sweet Spot groups the original color and five complimentary colors.



D8B69F



FFF3EB



D89FC1



807873



000000



808080

Same Dimension

The Same Dimension uses a secret algorithm to generate beautiful new colors.



D8B69F



FFCEAD



D8D29F



6B6560



AB4500



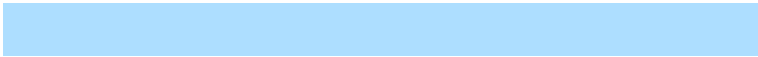
2B1100

Inverse Universe

The Inverse Universe completely reimagines the original color for something new.



9FC1D8



ADDEFF



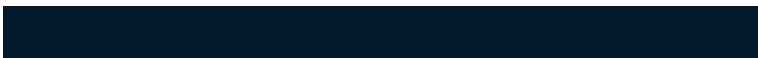
9FA5D8



60676B



0066AB



001A2B

Previews

White Background



This preview shows how the Hex color D8B69F looks on a white background.

Color Contrast Check

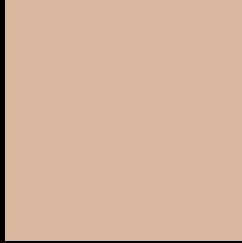
Large Text (above 18pt) WCAG AA × Fail

Any Text WCAG AA × Fail

Large Text (above 18pt) WCAG AAA × Fail

Any Text WCAG AAA × Fail

Black Background



This preview shows how the Hex color D8B69F looks on a black background.

Color Contrast Check

Large Text (above 18pt) WCAG AA ✓ Pass

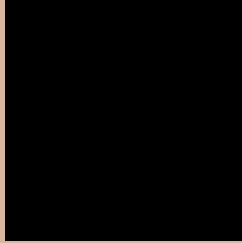
Any Text WCAG AA ✓ Pass

Large Text (above 18pt) WCAG AAA ✓ Pass

Any Text WCAG AAA ✓ Pass

If you want to check with other color combinations, try the [Color Contrast Checker](#).

Hex D8B69F Background



This preview shows how black text looks on a background with the Hex color D8B69F.



This preview shows how white text looks on a background with the Hex color D8B69F.

Color Blindness Simulation

Color vision deficiency is a very complex topic, and I could not describe the different causes any better than Wikipedia does, so if you want to learn more, you should check out their [article about color blindness](#).

Dichromacy



Original Color
D8B69F

Protanopia
C6BCA2

Deuteranopia
D9B59F

Trichromacy



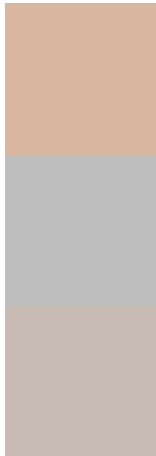
Original Color
D8B69F

Protanomaly
CDBAA1

Deuteranomaly
D9B59F

Tritanomaly
DBB3B3

Monochromacy



Original Color
D8B69F

Achromatopsia
BEBEBE

Achromatomaly
C7BBB3

CSS Examples

Text

The CSS property to change the color of the text to Hex D8B69F is called "color". The color property can be set on classes, ids or directly on the HTML element.

This example shows how text in the color #D8B69F looks like.

```
.text, #text, p{  
    color:#D8B69F  
}
```

If you want to add a text shadow in that color use the text-shadow property, you can generate a text shadow directly with our [CSS Text Shadow Generator](#).

Here you see how black text with a 4 pixel #D8B69F colored shadow looks like.

```
.shadow{ text-shadow: 4px 4px 2px #D8B69F
}
```

Border

The CSS property to change the border of an element to Hex D8B69F is called "border". The border property can be set on classes, ids or directly on the HTML element.

This example shows the color as border, it can be applied via the CSS property "border" or "border-color".

```
.border, #border, table{ border:4px solid
#D8B69F }
```

If only the border color should be changed use the property border-color.

```
.border{ border-color:#D8B69F }
```

If you want to add a box shadow in that color use:

Here you see how a box with a 4 pixel #D8B69F colored shadow looks like.

```
.boxshadow{ -moz-box-shadow:4px 4px 4px  
4px #D8B69F; -webkit-box-shadow:4px 4px  
4px 4px #D8B69F; box-shadow:4px 4px 4px  
4px #D8B69F }
```

Background

The CSS property to change the background color of an element to Hex D8B69F is called "background". The background property can be set on classes, ids or directly on the HTML element.

```
.background, #background, body{  
background:#D8B69F }
```

If only the background color should be changed can be used:

```
.background{ background-color:#D8B69F }
```

This example shows the color as background, it is applied via the CSS property "background".

To optimize and compress your CSS code, you can use our [online CSS compressor and optimizer](#) based on csstidy. If you want to create a linear or radial gradient as background or border, check our [CSS Gradient Generator](#).

Hey! You found this booklet interesting? Support Converting Colors with the new Membership Option!

The pro membership hides all ads, plus gives you double the colors in the color bucket, and more awesome pro features!

[Learn more, Memberships starting at \\$2.50/m!](#)

**Follow me
on Twitter!**

@ConvertingColor