

Converting Colors

Hex(D8B8BC)

Have a look what the booklet for
Hex(D8B8BC) contains.

Hex(D8B8BC)	3
<i>Conversions</i>	4
<i>Details</i>	6
<i>Harmonies</i>	11
<i>Previews</i>	23
<i>Color Blindness Simulation</i>	26
<i>CSS Examples</i>	29

Color

Hex(D8B8BC)

Conversions

Conversions Part 1

Format	Color
Hex	D8B8BC
RGB	216, 184, 188
RGB Percent	85%, 72%, 74%
CMY	0.1529, 0.2784, 0.2627
CMYK	0.00, 0.15, 0.13, 0.15
HSL	352°, 29%, 78%
HSV	352°, 15%, 85%
XYZ	54.5365, 52.5107, 54.8382
YIQ	194.0240, 17.7880, 8.0280

Conversions

Conversions Part 2

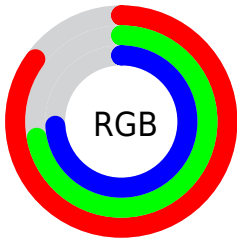
Format	Color
R _Y B	216, 184, 188
Decimal	14203068
CIE Lab	77.59, 12.10, 2.23
CIE LCh	78, 12.302, 10.440
Yxy	52.5107, 0.3369, 0.3244
Android (android.graphics.Color)	4292393148 (0xFFD8B8BC)
YUV	194.0240, -2.9698, 19.2730
Hunter-Lab	72.4643, 7.5262, 5.8567

Details

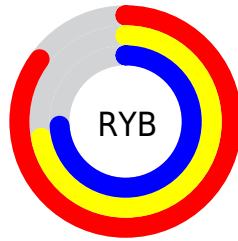
The Hex color **D8B8BC** is a light color, and the websafe version is hex **FFCCCC**. A complement of this color would be **B8D8D4**, and the grayscale version is **C2C2C2**.

A 20% lighter version of the original color is **FFF0F4**, and **A18387** is the 20% darker color. If you saturate the color by 10%, you get **D8A2A9**, and if you desaturate by 10%, it is **D8CECF**.

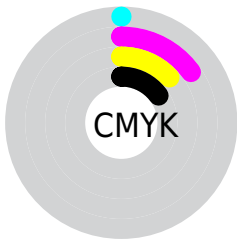
Distribution



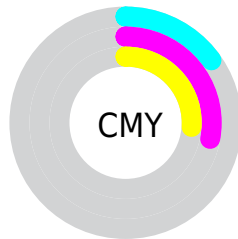
- Red (85%)
- Green (72%)
- Blue (74%)



- Red (85%)
- Yellow (72%)
- Blue (74%)



- Cyan (0%)
- Magenta (15%)
- Yellow (13%)
- Black (15%)



- Cyan (15%)
- Magenta (28%)
- Yellow (26%)

Brightness & Saturation Gradients

These gradients show how the Hex color D8B8BC changes by changing the brightness by 10 percent. The first figure shows a shift by +10% for each color and the second figure -10%.

Similar to the brightness gradients but the following saturation gradients show a change of the Hex color D8B8BC by changing the saturation by 10% instead.

 D8B8BC

FFFFFF

 FFF0F4

 D8B8BC

 BC9DA1

 A18387


 866A6E

 6D5155

 543A3E

 3D2428

 261014

 040000

 000000

 D8B8BC

 D8B8BC

 D8A2A9

 D8CECF

 D88D96

 D8E3E2

 D87783

 D8F9F5

 D86270

 D8FFFF

 D84C5E

 D8364B

 D82138

 D80B25

 D8001B

Harmonies

Analogous

The Analogous color harmony consists of three colors that are next to each other on the color wheel.



D2B9C8



D8B8BC



D7B9B1

Triad

The Triadic color harmony groups three colors that are evenly spaced from another and form a triangle on the color wheel.



D8B8BC



B8C4AE



ACC3D5

Complementary

The Complementary color scheme is a pair of colors which are on the opposite of each other on the color wheel.



D8B8BC



B8D8D4

Split Complementary

Split-complementary colors differ from the complementary color scheme. The scheme consists of three colors, the original color and two neighbors of the complement color.



A4C6CE



D8B8BC



ACC6B8

Square

The Square scheme is like the rectangle color scheme, but the four colors are evenly spaced on the color wheel.



D8B8BC



C5C0A9



A4C7C3



B9BFD6

Rectangle

The Rectangle color scheme consists of four colors that form a rectangle on the color wheel.



D8B8BC



D3BBAC



A4C7C3



A8C4D3

Sweetspot

The Sweet Spot groups the original color and five complimentary colors.



D8B8BC



FFF5F6



D4B8D8



80797A



000000



808080

Same Dimension

The Same Dimension uses a secret algorithm to generate beautiful new colors.



D8B8BC



FFD1D7



D8C4B8



6B6062



AB0015



2B0005

Inverse Universe

The Inverse Universe completely reimagines the original color for something new.



D8B8BC



FFD1D7



B8CCD8



6B6062



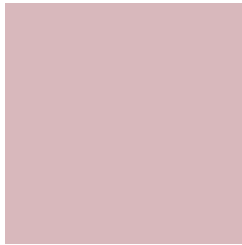
AB0015



2B0005

Previews

White Background



This preview shows how the Hex color D8B8BC looks on a white background.

Color Contrast Check

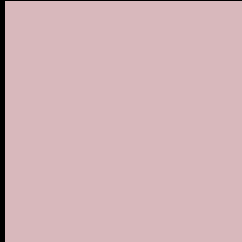
Large Text (above 18pt) WCAG AA × Fail

Any Text WCAG AA × Fail

Large Text (above 18pt) WCAG AAA × Fail

Any Text WCAG AAA × Fail

Black Background



This preview shows how the Hex color D8B8BC looks on a black background.

Color Contrast Check

Large Text (above 18pt) WCAG AA ✓ Pass

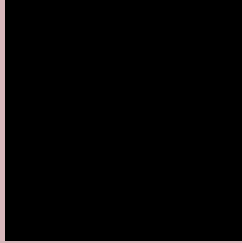
Any Text WCAG AA ✓ Pass

Large Text (above 18pt) WCAG AAA ✓ Pass

Any Text WCAG AAA ✓ Pass

If you want to check with other color combinations, try the [Color Contrast Checker](#).

Hex D8B8BC Background



This preview shows how black text looks on a background with the Hex color D8B8BC.



This preview shows how white text looks on a background with the Hex color D8B8BC.

Color Blindness Simulation

Color vision deficiency is a very complex topic, and I could not describe the different causes any better than Wikipedia does, so if you want to learn more, you should check out their [article about color blindness](#).

Dichromacy



Original Color
D8B8BC

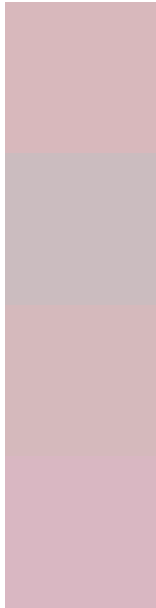
Protanopia
C3BFC0

Deuteranopia
D4BABC



Tritanopia
D9B7C5

Trichromacy



Original Color
D8B8BC

Protanomaly
CBBCBF

Deuteranomaly
D5B9BC

Tritanomaly
D9B7C2

Monochromacy



Original Color
D8B8BC

Achromatopsia
C2C2C2

Achromatomaly
CABEC0

CSS Examples

Text

The CSS property to change the color of the text to Hex D8B8BC is called "color". The color property can be set on classes, ids or directly on the HTML element.

This example shows how text in the color #D8B8BC looks like.

```
.text, #text, p{  
    color:#D8B8BC  
}
```

If you want to add a text shadow in that color use the text-shadow property, you can generate a text shadow directly with our [CSS Text Shadow Generator](#).

Here you see how black text with a 4 pixel #D8B8BC colored shadow looks like.

```
.shadow{ text-shadow: 4px 4px 2px #D8B8BC }  
}
```

Border

The CSS property to change the border of an element to Hex D8B8BC is called "border". The border property can be set on classes, ids or directly on the HTML element.

This example shows the color as border, it can be applied via the CSS property "border" or "border-color".

```
.border, #border, table{ border:4px solid #D8B8BC }  
}
```

If only the border color should be changed use the property `border-color`.

```
.border{ border-color:#D8B8BC }
```

If you want to add a box shadow in that color use:

Here you see how a box with a 4 pixel #D8B8BC colored shadow looks like.

```
.boxshadow{ -moz-box-shadow:4px 4px 4px  
4px #D8B8BC; -webkit-box-shadow:4px 4px  
4px 4px #D8B8BC; box-shadow:4px 4px 4px  
4px #D8B8BC }
```

Background

The CSS property to change the background color of an element to Hex D8B8BC is called "background". The background property can be set on classes, ids or directly on the HTML element.

```
.background, #background, body{  
background:#D8B8BC }
```

If only the background color should be changed can be used:

```
.background{ background-color:#D8B8BC }
```

This example shows the color as background, it is applied via the CSS property "background".

To optimize and compress your CSS code, you can use our [online CSS compressor and optimizer](#) based on csstidy. If you want to create a linear or radial gradient as background or border, check our [CSS Gradient Generator](#).

Hey! You found this booklet interesting? Support Converting Colors with the new Membership Option!

The pro membership hides all ads, plus gives you double the colors in the color bucket, and more awesome pro features!

[Learn more, Memberships starting at \\$2.50/m!](#)

**Follow me
on Twitter!**

@ConvertingColor