

Converting Colors

Hex(D8B8C3)

Have a look what the booklet for
Hex(D8B8C3) contains.

Hex(D8B8C3)	3
<i>Conversions</i>	4
<i>Details</i>	6
<i>Harmonies</i>	11
<i>Previews</i>	23
<i>Color Blindness Simulation</i>	26
<i>CSS Examples</i>	29

Color

Hex(D8B8C3)

Conversions

Conversions Part 1

Format	Color
Hex	D8B8C3
RGB	216, 184, 195
RGB Percent	85%, 72%, 76%
CMY	0.1529, 0.2784, 0.2353
CMYK	0.00, 0.15, 0.10, 0.15
HSL	339°, 29%, 78%
HSV	339°, 15%, 85%
XYZ	55.3097, 52.8200, 58.9099
YIQ	194.8220, 15.5410, 10.2050

Conversions

Conversions Part 2

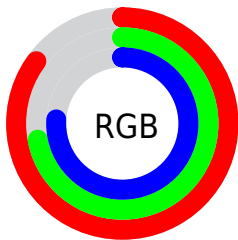
Format	Color
R _Y B	216, 184, 195
Decimal	14203075
CIE Lab	77.77, 13.26, -1.30
CIE LCh	78, 13.325, 354.404
Yxy	52.8200, 0.3311, 0.3162
Android (android.graphics.Color)	4292393155 (0xFFD8B8C3)
YUV	194.8220, 0.0878, 18.5731
Hunter-Lab	72.6774, 8.6585, 2.8157

Details

The Hex color **D8B8C3** is a light color, and the websafe version is hex **FFCCCC**. A complement of this color would be **B8D8CD**, and the grayscale version is **C3C3C3**.

A 20% lighter version of the original color is **FFF0FC**, and **A1838D** is the 20% darker color. If you saturate the color by 10%, you get **D8A2B5**, and if you desaturate by 10%, it is **D8CED1**.

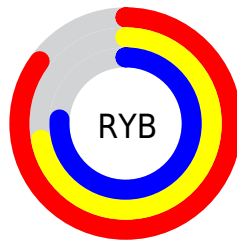
Distribution



Red (85%)

Green (72%)

Blue (76%)



Red (85%)

Yellow (72%)

Blue (76%)

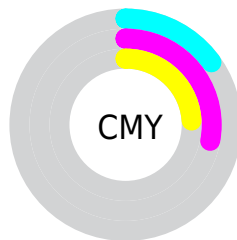


Cyan (0%)

Magenta (15%)

Yellow (10%)

Black (15%)



Cyan (15%)

Magenta (28%)

Yellow (24%)

Brightness & Saturation Gradients

These gradients show how the Hex color D8B8C3 changes by changing the brightness by 10 percent. The first figure shows a shift by +10% for each color and the second figure -10%.

Similar to the brightness gradients but the following saturation gradients show a change of the Hex color D8B8C3 by changing the saturation by 10% instead.

 D8B8C3

 D8B8C3

FFFFFF

 BC9DA8

 FFF0FC

 A1838D

 876A74

 6D515B

 543A44

 3D242E

 261019

 090000

 000000

 D8B8C3

 D8B8C3

 D8A2B5

 D8CED1

 D88DA7

 D8E3DF

 D87798

 D8F9EE

 D8628A

 D8FFFC

 D84C7C

 D8FFFF

 D8366E

 D82160

 D80B52

 D8004A

Harmonies

Analogous

The Analogous color harmony consists of three colors that are next to each other on the color wheel.



CEBACF



D8B8C3



DBB8B7

Triad

The Triadic color harmony groups three colors that are evenly spaced from another and form a triangle on the color wheel.



D8B8C3



BFC3AA



A5C5D4

Complementary

The Complementary color scheme is a pair of colors which are on the opposite of each other on the color wheel.



D8B8C3



B8D8CD

Split Complementary

Split-complementary colors differ from the complementary color scheme. The scheme consists of three colors, the original color and two neighbors of the complement color.



A1C7CA



D8B8C3



B1C6B2

Square

The Square scheme is like the rectangle color scheme, but the four colors are evenly spaced on the color wheel.



D8B8C3



CDBFA8



A6C7BD



B0C2D8

Rectangle

The Rectangle color scheme consists of four colors that form a rectangle on the color wheel.



D8B8C3



D9BAAF



A6C7BD



A2C6D1

Sweetspot

The Sweet Spot groups the original color and five complimentary colors.



D8B8C3



FFF5F8



CDB8D8



80797B



000000



808080

Same Dimension

The Same Dimension uses a secret algorithm to generate beautiful new colors.



D8B8C3



FFD1E1



D8BDB8



6B6064



AB003B



2B000F

Inverse Universe

The Inverse Universe completely reimagines the original color for something new.



D8B8C3



FFD1E1



B8D3D8



6B6064



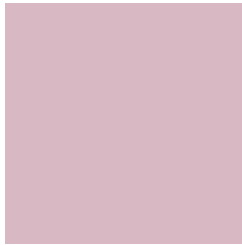
AB003B



2B000F

Previews

White Background



This preview shows how the Hex color D8B8C3 looks on a white background.

Color Contrast Check

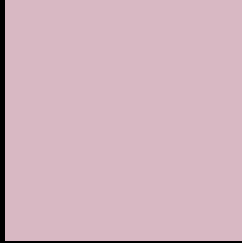
Large Text (above 18pt) WCAG AA × Fail

Any Text WCAG AA × Fail

Large Text (above 18pt) WCAG AAA × Fail

Any Text WCAG AAA × Fail

Black Background



This preview shows how the Hex color D8B8C3 looks on a black background.

Color Contrast Check

Large Text (above 18pt) WCAG AA ✓ Pass

Any Text WCAG AA ✓ Pass

Large Text (above 18pt) WCAG AAA ✓ Pass

Any Text WCAG AAA ✓ Pass

If you want to check with other color combinations, try the [Color Contrast Checker](#).

Hex D8B8C3 Background



This preview shows how black text looks on a background with the Hex color D8B8C3.

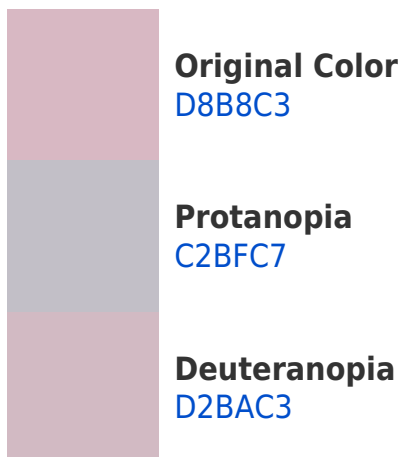


This preview shows how white text looks on a background with the Hex color D8B8C3.

Color Blindness Simulation

Color vision deficiency is a very complex topic, and I could not describe the different causes any better than Wikipedia does, so if you want to learn more, you should check out their [article about color blindness](#).

Dichromacy





Tritanopia
D8B8C6

Trichromacy



Original Color
D8B8C3

Protanomaly
CABCC6

Deuteranomaly
D4B9C3

Tritanomaly
D8B8C5

Monochromacy



Original Color
D8B8C3

Achromatopsia
C3C3C3

Achromatomaly
CBBFC3

CSS Examples

Text

The CSS property to change the color of the text to Hex D8B8C3 is called "color". The color property can be set on classes, ids or directly on the HTML element.

This example shows how text in the color #D8B8C3 looks like.

```
.text, #text, p{  
    color:#D8B8C3  
}
```

If you want to add a text shadow in that color use the text-shadow property, you can generate a text shadow directly with our [CSS Text Shadow Generator](#).

Here you see how black text with a 4 pixel #D8B8C3 colored shadow looks like.

```
.shadow{ text-shadow: 4px 4px 2px #D8B8C3
}
```

Border

The CSS property to change the border of an element to Hex D8B8C3 is called "border". The border property can be set on classes, ids or directly on the HTML element.

This example shows the color as border, it can be applied via the CSS property "border" or "border-color".

```
.border, #border, table{ border:4px solid
#D8B8C3 }
```

If only the border color should be changed use the property `border-color`.

```
.border{ border-color:#D8B8C3 }
```

If you want to add a box shadow in that color use:

Here you see how a box with a 4 pixel #D8B8C3 colored shadow looks like.

```
.boxshadow{ -moz-box-shadow:4px 4px 4px  
4px #D8B8C3; -webkit-box-shadow:4px 4px  
4px 4px #D8B8C3; box-shadow:4px 4px 4px  
4px #D8B8C3 }
```

Background

The CSS property to change the background color of an element to Hex D8B8C3 is called "background". The background property can be set on classes, ids or directly on the HTML element.

```
.background, #background, body{  
background:#D8B8C3 }
```

If only the background color should be changed can be used:

```
.background{ background-color:#D8B8C3 }
```

This example shows the color as background, it is applied via the CSS property "background".

To optimize and compress your CSS code, you can use our [online CSS compressor and optimizer](#) based on csstidy. If you want to create a linear or radial gradient as background or border, check our [CSS Gradient Generator](#).

Hey! You found this booklet interesting? Support Converting Colors with the new Membership Option!

The pro membership hides all ads, plus gives you double the colors in the color bucket, and more awesome pro features!

[Learn more, Memberships starting at \\$2.50/m!](#)

**Follow me
on Twitter!**

@ConvertingColor