

Converting Colors

Hex(D8B9B5)

Have a look what the booklet for
Hex(D8B9B5) contains.

Hex(D8B9B5)	3
<i>Conversions</i>	4
<i>Details</i>	6
<i>Harmonies</i>	11
<i>Previews</i>	23
<i>Color Blindness Simulation</i>	26
<i>CSS Examples</i>	29

Color

Hex(D8B9B5)

Conversions

Conversions Part 1

Format	Color
Hex	D8B9B5
RGB	216, 185, 181
RGB Percent	85%, 73%, 71%
CMY	0.1529, 0.2745, 0.2902
CMYK	0.00, 0.14, 0.16, 0.15
HSL	7°, 31%, 78%
HSV	7°, 16%, 85%
XYZ	54.0084, 52.6330, 51.0287
YIQ	193.8130, 19.7600, 5.3280

Conversions

Conversions Part 2

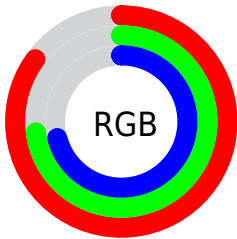
Format	Color
R _Y B	216, 186, 181
Decimal	14203317
CIE Lab	77.66, 10.44, 6.13
CIE LCh	78, 12.105, 30.412
Yxy	52.6330, 0.3425, 0.3338
Android (android.graphics.Color)	4292393397 (0xFFD8B9B5)
YUV	193.8130, -6.3168, 19.4580
Hunter-Lab	72.5486, 5.9230, 9.0811

Details

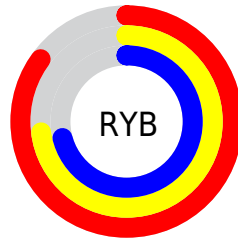
The Hex color **D8B9B5** is a light color, and the websafe version is hex **FFCCCC**. A complement of this color would be **B5D4D8**, and the grayscale version is **C2C2C2**.

A 20% lighter version of the original color is **FFF1ED**, and **A18480** is the 20% darker color. If you saturate the color by 10%, you get **D8A69F**, and if you desaturate by 10%, it is **D8CCCB**.

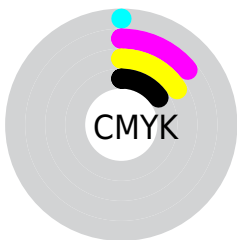
Distribution



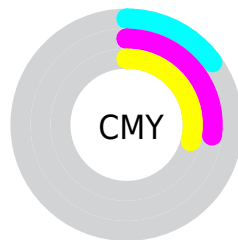
- Red (85%)
- Green (73%)
- Blue (71%)



- Red (85%)
- Yellow (73%)
- Blue (71%)



- Cyan (0%)
- Magenta (14%)
- Yellow (16%)
- Black (15%)



- Cyan (15%)
- Magenta (27%)
- Yellow (29%)

Brightness & Saturation Gradients

These gradients show how the Hex color D8B9B5 changes by changing the brightness by 10 percent. The first figure shows a shift by +10% for each color and the second figure -10%.

Similar to the brightness gradients but the following saturation gradients show a change of the Hex color D8B9B5 by changing the saturation by 10% instead.

 D8B9B5

 D8B9B5

FFFFFF

 BC9E9A

 FFF1ED

 A18480

 866B67

 6D524F

 543B38

 3C2523

 26110D

 010000

 000000

 D8B9B5

 D8B9B5

 D8A69F

 D8CCCB

 D8938A

 D8DFE0

 D88074

 D8F2F6

 D86C5F

 D8FFFF

 D85949

 D84633

 D8331E

 D82008

 D81900

Harmonies

Analogous

The Analogous color harmony consists of three colors that are next to each other on the color wheel.



D7B8C0



D8B9B5



D3BCAD

Triad

The Triadic color harmony groups three colors that are evenly spaced from another and form a triangle on the color wheel.



D8B9B5



B0C5B5



B4C1D6

Complementary

The Complementary color scheme is a pair of colors which are on the opposite of each other on the color wheel.



D8B9B5



B5D4D8

Split Complementary

Split-complementary colors differ from the complementary color scheme. The scheme consists of three colors, the original color and two neighbors of the complement color.



A9C4D3



D8B9B5



A7C7C0

Square

The Square scheme is like the rectangle color scheme, but the four colors are evenly spaced on the color wheel.



D8B9B5



BCC3AC



A4C6CB



C2BDD3

Rectangle

The Rectangle color scheme consists of four colors that form a rectangle on the color wheel.



D8B9B5



CDBEAA



A4C6CB



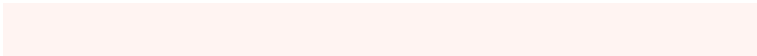
B0C2D6

Sweetspot

The Sweet Spot groups the original color and five complimentary colors.



D8B9B5



FFF4F2



D8B5D5



807978



000000



808080

Same Dimension

The Same Dimension uses a secret algorithm to generate beautiful new colors.



D8B9B5



FFD4CF



D8CAB5



6B6260



AB1400



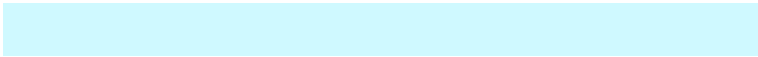
2B0500

Inverse Universe

The Inverse Universe completely reimagines the original color for something new.



B5D4D8



CFF9FF



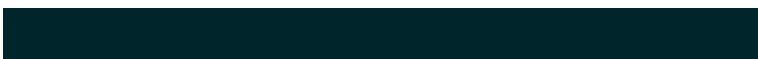
B5C3D8



606A6B



0097AB



00262B

Previews

White Background



This preview shows how the Hex color D8B9B5 looks on a white background.

Color Contrast Check

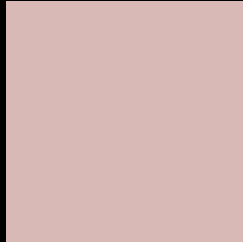
Large Text (above 18pt) WCAG AA × Fail

Any Text WCAG AA × Fail

Large Text (above 18pt) WCAG AAA × Fail

Any Text WCAG AAA × Fail

Black Background



This preview shows how the Hex color D8B9B5 looks on a black background.

Color Contrast Check

Large Text (above 18pt) WCAG AA ✓ Pass

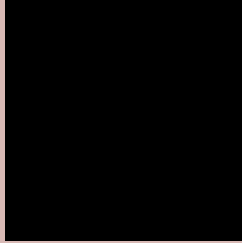
Any Text WCAG AA ✓ Pass

Large Text (above 18pt) WCAG AAA ✓ Pass

Any Text WCAG AAA ✓ Pass

If you want to check with other color combinations, try the [Color Contrast Checker](#).

Hex D8B9B5 Background



This preview shows how black text looks on a background with the Hex color D8B9B5.

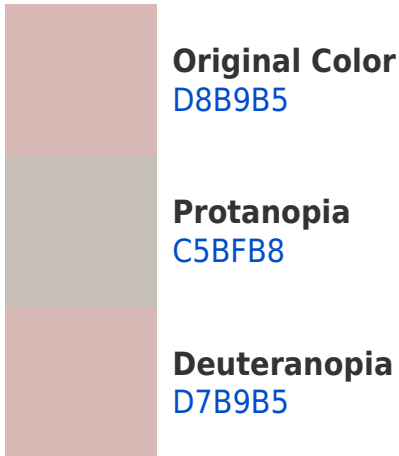


This preview shows how white text looks on a background with the Hex color D8B9B5.

Color Blindness Simulation

Color vision deficiency is a very complex topic, and I could not describe the different causes any better than Wikipedia does, so if you want to learn more, you should check out their [article about color blindness](#).

Dichromacy





Tritanopia
DAB7C5

Trichromacy



Original Color
D8B9B5

Protanomaly
CCBDB7

Deuteranomaly
D7B9B5

Tritanomaly
D9B8BF

Monochromacy



Original Color
D8B9B5

Achromatopsia
C2C2C2

Achromatomaly
CABFBD

CSS Examples

Text

The CSS property to change the color of the text to Hex D8B9B5 is called "color". The color property can be set on classes, ids or directly on the HTML element.

This example shows how text in the color #D8B9B5 looks like.

```
.text, #text, p{  
    color:#D8B9B5  
}
```

If you want to add a text shadow in that color use the text-shadow property, you can generate a text shadow directly with our [CSS Text Shadow Generator](#).

Here you see how black text with a 4 pixel #D8B9B5 colored shadow looks like.

```
.shadow{ text-shadow: 4px 4px 2px #D8B9B5
}
```

Border

The CSS property to change the border of an element to Hex D8B9B5 is called "border". The border property can be set on classes, ids or directly on the HTML element.

This example shows the color as border, it can be applied via the CSS property "border" or "border-color".

```
.border, #border, table{ border:4px solid
#D8B9B5 }
```

If only the border color should be changed use the property `border-color`.

```
.border{ border-color:#D8B9B5 }
```

If you want to add a box shadow in that color use:

Here you see how a box with a 4 pixel #D8B9B5 colored shadow looks like.

```
.boxshadow{ -moz-box-shadow:4px 4px 4px  
4px #D8B9B5; -webkit-box-shadow:4px 4px  
4px 4px #D8B9B5; box-shadow:4px 4px 4px  
4px #D8B9B5 }
```

Background

The CSS property to change the background color of an element to Hex D8B9B5 is called "background". The background property can be set on classes, ids or directly on the HTML element.

```
.background, #background, body{  
background:#D8B9B5 }
```

If only the background color should be changed can be used:

```
.background{ background-color:#D8B9B5 }
```

This example shows the color as background, it is applied via the CSS property "background".

To optimize and compress your CSS code, you can use our [online CSS compressor and optimizer](#) based on csstidy. If you want to create a linear or radial gradient as background or border, check our [CSS Gradient Generator](#).

Hey! You found this booklet interesting? Support Converting Colors with the new Membership Option!

The pro membership hides all ads, plus gives you double the colors in the color bucket, and more awesome pro features!

[Learn more, Memberships starting at \\$2.50/m!](#)

**Follow me
on Twitter!**

@ConvertingColor