

# Converting Colors

Hex(D8B9BD)

Have a look what the booklet for  
Hex(D8B9BD) contains.

<b>Hex(D8B9BD)</b> .....	3
<i><b>Conversions</b></i> .....	4
<i><b>Details</b></i> .....	6
<i><b>Harmonies</b></i> .....	11
<i><b>Previews</b></i> .....	23
<i><b>Color Blindness Simulation</b></i> .....	26
<i><b>CSS Examples</b></i> .....	29

**Color**

**Hex(D8B9BD)**

# Conversions

## Conversions Part 1

Format	Color
Hex	D8B9BD
RGB	216, 185, 189
RGB Percent	85%, 73%, 74%
CMY	0.1529, 0.2745, 0.2588
CMYK	0.00, 0.14, 0.12, 0.15
HSL	352°, 28%, 79%
HSV	352°, 14%, 85%
XYZ	54.8532, 52.9710, 55.4775
YIQ	194.7250, 17.1920, 7.8160

# Conversions

## Conversions Part 2

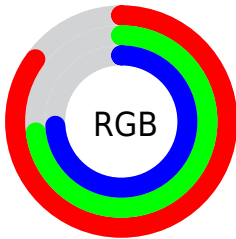
<b>Format</b>	<b>Color</b>
<a href="#">RYB</a>	<a href="#">216, 185, 189</a>
Decimal	<a href="#">14203325</a>
CIELab	<a href="#">77.86, 11.73, 2.08</a>
CIELCh	<a href="#">78, 11.909, 10.074</a>
Yxy	<a href="#">52.9710, 0.3359, 0.3244</a>
Android (android.graphics.Color)	<a href="#">4292393405 (0xFFD8B9BD)</a>
YUV	<a href="#">194.7250, -2.8224, 18.6582</a>
Hunter-Lab	<a href="#">72.7812, 7.1635, 5.7530</a>

# Details

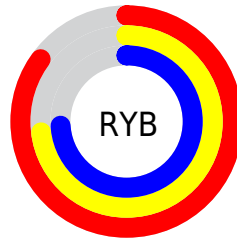
The Hex color **D8B9BD** is a light color, and the websafe version is hex **FFCCCC**. A complement of this color would be **B9D8D4**, and the grayscale version is **C3C3C3**.

A 20% lighter version of the original color is **FFF1F5**, and **A18488** is the 20% darker color. If you saturate the color by 10%, you get **D8A3AA**, and if you desaturate by 10%, it is **D8CFD0**.

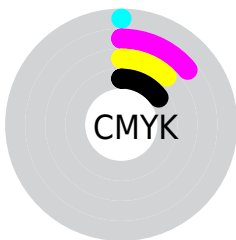
# Distribution



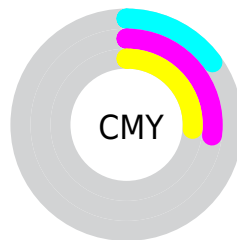
- Red (85%)
- Green (73%)
- Blue (74%)



- Red (85%)
- Yellow (73%)
- Blue (74%)



- Cyan (0%)
- Magenta (14%)
- Yellow (12%)
- Black (15%)



- Cyan (15%)
- Magenta (27%)
- Yellow (26%)

# Brightness & Saturation Gradients

These gradients show how the Hex color D8B9BD changes by changing the brightness by 10 percent. The first figure shows a shift by +10% for each color and the second figure -10%.

Similar to the brightness gradients but the following saturation gradients show a change of the Hex color D8B9BD by changing the saturation by 10% instead.



 D8B9BD

FFFFFF

 FFF1F5

 D8B9BD

 BC9EA2

 A18488

 876B6E

 6D5256

 543B3F

 3D2529

 261115

 060000

 000000

 D8B9BD

 D8B9BD

 D8A3AA

 D8CFD0

 D88E97

 D8E4E3

 D87885

 D8FAF5

 D86372

 D8FFFF

 D84D5F

 D8374C

 D82239

 D80C26

 D8001C

# Harmonies

## Analogous

The Analogous color harmony consists of three colors that are next to each other on the color wheel.



D2BAC8



D8B9BD



D7BAB3

# Triad

The Triadic color harmony groups three colors that are evenly spaced from another and form a triangle on the color wheel.



D8B9BD



B9C4AF



ADC4D5

# Complementary

The Complementary color scheme is a pair of colors which are on the opposite of each other on the color wheel.



D8B9BD



B9D8D4

# Split Complementary

Split-complementary colors differ from the complementary color scheme. The scheme consists of three colors, the original color and two neighbors of the complement color.



A6C6CE



D8B9BD



ADC6B9

# Square

The Square scheme is like the rectangle color scheme, but the four colors are evenly spaced on the color wheel.



D8B9BD



C6C1AB



A6C7C4



B9C0D6

# Rectangle

The Rectangle color scheme consists of four colors that form a rectangle on the color wheel.



D8B9BD



D3BCAE



A6C7C4



AAC5D3



# Sweetspot

The Sweet Spot groups the original color and five complimentary colors.



D8B9BD



FFF5F6



D4B9D8



80797A



000000



808080



# Same Dimension

The Same Dimension uses a secret algorithm to generate beautiful new colors.



D8B9BD



FFD4D9



D8C4B9



6B6062



AB0016



2B0006



# Inverse Universe

The Inverse Universe completely reimagines the original color for something new.



D8B9BD



FFD4D9



B9CDD8



6B6062



AB0016

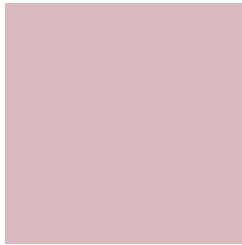


2B0006



# Previews

## White Background



This preview shows how the Hex color D8B9BD looks on a white background.

## Color Contrast Check

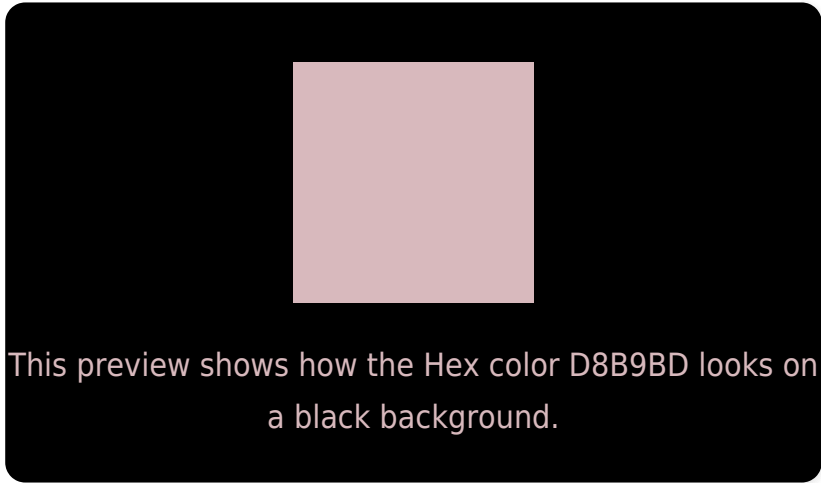
Large Text (above 18pt) WCAG AA × Fail

Any Text WCAG AA × Fail

Large Text (above 18pt) WCAG AAA × Fail

Any Text WCAG AAA × Fail

# Black Background



## Color Contrast Check

Large Text (above 18pt) WCAG AA ✓ Pass

Any Text WCAG AA ✓ Pass

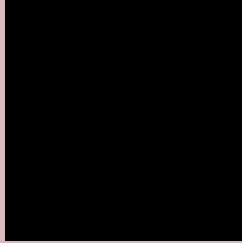
Large Text (above 18pt) WCAG AAA ✓ Pass

Any Text WCAG AAA ✓ Pass

If you want to check with other color combinations, try the [Color Contrast Checker](#).



## Hex D8B9BD Background



This preview shows how black text looks on a background with the Hex color D8B9BD.

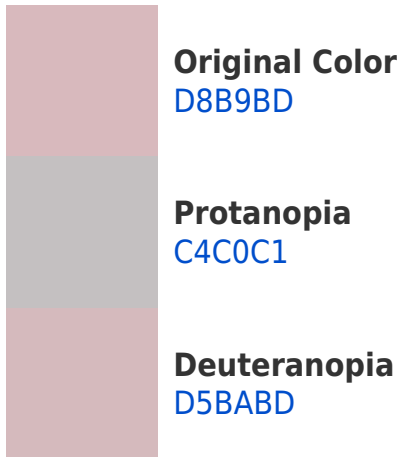


This preview shows how white text looks on a background with the Hex color D8B9BD.

# Color Blindness Simulation

Color vision deficiency is a very complex topic, and I could not describe the different causes any better than Wikipedia does, so if you want to learn more, you should check out their [article about color blindness](#).

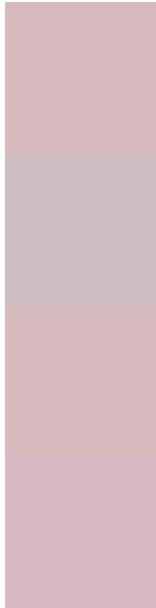
## Dichromacy





**Tritanopia**  
D9B8C6

# Trichromacy



**Original Color**  
D8B9BD

**Protanomaly**  
CBBDC0

**Deuteranomaly**  
D6BABD

**Tritanomaly**  
D9B8C3

# Monochromacy



**Original Color**  
D8B9BD

**Achromatopsia**  
C3C3C3

**Achromatomaly**  
CBBFC1

# CSS Examples

## Text

The CSS property to change the color of the text to Hex D8B9BD is called "color". The color property can be set on classes, ids or directly on the HTML element.

This example shows how text in the color #D8B9BD looks like.

```
.text, #text, p{  
    color:#D8B9BD  
}
```

If you want to add a text shadow in that color use the text-shadow property, you can generate a text shadow directly with our [CSS Text Shadow Generator](#).

Here you see how black text with a 4 pixel #D8B9BD colored shadow looks like.

```
.shadow{ text-shadow: 4px 4px 2px #D8B9BD }  
}
```

## Border

The CSS property to change the border of an element to Hex D8B9BD is called "border". The border property can be set on classes, ids or directly on the HTML element.

This example shows the color as border, it can be applied via the CSS property "border" or "border-color".

```
.border, #border, table{ border:4px solid #D8B9BD }  
}
```

If only the border color should be changed use the property `border-color`.

```
.border{ border-color:#D8B9BD }
```

If you want to add a box shadow in that color use:

Here you see how a box with a 4 pixel #D8B9BD colored shadow looks like.

```
.boxshadow{ -moz-box-shadow:4px 4px 4px  
4px #D8B9BD; -webkit-box-shadow:4px 4px  
4px 4px #D8B9BD; box-shadow:4px 4px 4px  
4px #D8B9BD }
```

# Background

The CSS property to change the background color of an element to Hex D8B9BD is called "background". The background property can be set on classes, ids or directly on the HTML element.

```
.background, #background, body{  
background:#D8B9BD }
```

If only the background color should be changed can be used:

```
.background{ background-color:#D8B9BD }
```

This example shows the color as background, it is applied via the CSS property "background".

To optimize and compress your CSS code, you can use our [online CSS compressor and optimizer](#) based on csstidy. If you want to create a linear or radial gradient as background or border, check our [CSS Gradient Generator](#).



Hey! You found this booklet interesting? Support Converting Colors with the new Membership Option!

The pro membership hides all ads, plus gives you double the colors in the color bucket, and more awesome pro features!

**[Learn more, Memberships starting at \\$2.50/m!](#)**

**Follow me  
on Twitter!**

@ConvertingColor