

# Converting Colors

Hex(D8BCA2)

Have a look what the booklet for  
Hex(D8BCA2) contains.

<b>Hex(D8BCA2)</b> .....	3
<b><i>Conversions</i></b> .....	4
<b><i>Details</i></b> .....	6
<b><i>Harmonies</i></b> .....	11
<b><i>Previews</i></b> .....	23
<b><i>Color Blindness Simulation</i></b> .....	26
<b><i>CSS Examples</i></b> .....	29

# **Color**

**Hex(D8BCA2)**

# Conversions

## Conversions Part 1

Format	Color
Hex	D8BCA2
RGB	216, 188, 162
RGB Percent	85%, 74%, 64%
CMY	0.1529, 0.2627, 0.3647
CMYK	0.00, 0.13, 0.25, 0.15
HSL	29°, 41%, 74%
HSV	29°, 25%, 85%
XYZ	52.8237, 53.1740, 41.6619
YIQ	193.4080, 25.0340, -2.1500

# Conversions

## Conversions Part 2

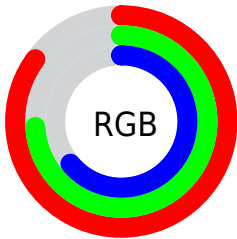
Format	Color
R <sub>Y</sub> B	216, 212, 162
Decimal	14204066
CIE Lab	77.98, 6.01, 16.83
CIE LCh	78, 17.875, 70.350
Yxy	53.1740, 0.3577, 0.3601
Android (android.graphics.Color)	4292394146 (0xFFD8BCA2)
YUV	193.4080, -15.4841, 19.8132
Hunter-Lab	72.9205, 1.6947, 17.1700

# Details

The Hex color **D8BCA2** is a light color, and the websafe version is hex **CCCC99**. A complement of this color would be **A2BED8**, and the grayscale version is **C2C2C2**.

A 20% lighter version of the original color is **FFF4D9**, and **A1876E** is the 20% darker color. If you saturate the color by 10%, you get **D8B18C**, and if you desaturate by 10%, it is **D8C7B8**.

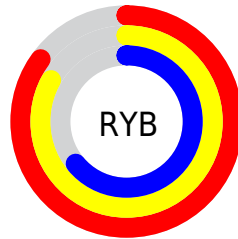
# Distribution



Red (85%)

Green (74%)

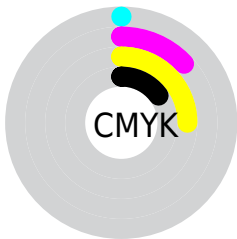
Blue (64%)



Red (85%)

Yellow (83%)

Blue (64%)

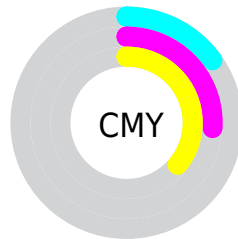


Cyan (0%)

Magenta (13%)

Yellow (25%)

Black (15%)



Cyan (15%)

Magenta (26%)

Yellow (36%)

# Brightness & Saturation Gradients

These gradients show how the Hex color D8BCA2 changes by changing the brightness by 10 percent. The first figure shows a shift by +10% for each color and the second figure -10%.

Similar to the brightness gradients but the following saturation gradients show a change of the Hex color D8BCA2 by changing the saturation by 10% instead.





D8BCA2



D8BCA2

FFFFFF



BCA188



FFF4D9



A1876E



FFFFF5



866E56



6C553E



533E28



3B2814



251400



000000



D8BCA2



D8BCA2

 D8B18C

 D8C7B8

 D8A677

 D8D2CD

 D89A61

 D8DEE3

 D88F4C

 D8E9F8

 D88436

 D8F4FF

 D87920

 D8FFFF

 D86E0B

 D86800

# Harmonies

## Analogous

The Analogous color harmony consists of three colors that are next to each other on the color wheel.



E2B7AC



D8BCA2



C8C1A0

# Triad

The Triadic color harmony groups three colors that are evenly spaced from another and form a triangle on the color wheel.



D8BCA2



97CBC6



CBBBDA

# Complementary

The Complementary color scheme is a pair of colors which are on the opposite of each other on the color wheel.



D8BCA2



A2BED8

# Split Complementary

Split-complementary colors differ from the complementary color scheme. The scheme consists of three colors, the original color and two neighbors of the complement color.



B6C0E1



D8BCA2



96C9D6

# Square

The Square scheme is like the rectangle color scheme, but the four colors are evenly spaced on the color wheel.



D8BCA2



A3CAB5



A2C6E0



DBB7CC

# Rectangle

The Rectangle color scheme consists of four colors that form a rectangle on the color wheel.



D8BCA2



BBC5A4



A2C6E0



C4BCDD



# Sweetspot

The Sweet Spot groups the original color and five complimentary colors.



D8BCA2



FFF4EB



D8A2BF



807973



000000



808080



# Same Dimension

The Same Dimension uses a secret algorithm to generate beautiful new colors.



D8BCA2



FFD7B3



D8D6A2



6B6660



AB5200



2B1500

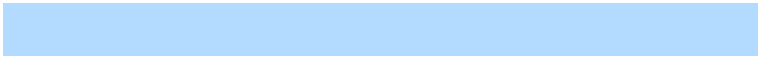


# Inverse Universe

The Inverse Universe completely reimagines the original color for something new.



A2BED8



B3DAFF



A2A4D8



60666B



0059AB



00162B



# Previews

## White Background



This preview shows how the Hex color D8BCA2 looks on a white background.

## Color Contrast Check

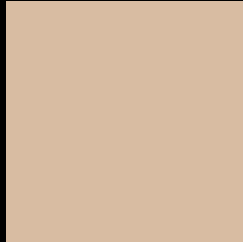
Large Text (above 18pt) WCAG AA × Fail

Any Text WCAG AA × Fail

Large Text (above 18pt) WCAG AAA × Fail

Any Text WCAG AAA × Fail

# Black Background



This preview shows how the Hex color D8BCA2 looks on a black background.

## Color Contrast Check

Large Text (above 18pt) WCAG AA ✓ Pass

Any Text WCAG AA ✓ Pass

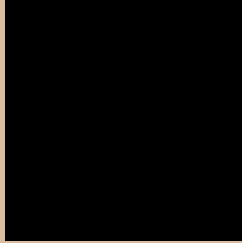
Large Text (above 18pt) WCAG AAA ✓ Pass

Any Text WCAG AAA ✓ Pass

If you want to check with other color combinations, try the [Color Contrast Checker](#).



## Hex D8BCA2 Background



This preview shows how black text looks on a background with the Hex color D8BCA2.



This preview shows how white text looks on a background with the Hex color D8BCA2.

# Color Blindness Simulation

Color vision deficiency is a very complex topic, and I could not describe the different causes any better than Wikipedia does, so if you want to learn more, you should check out their [article about color blindness](#).

## Dichromacy



**Original Color**  
D8BCA2

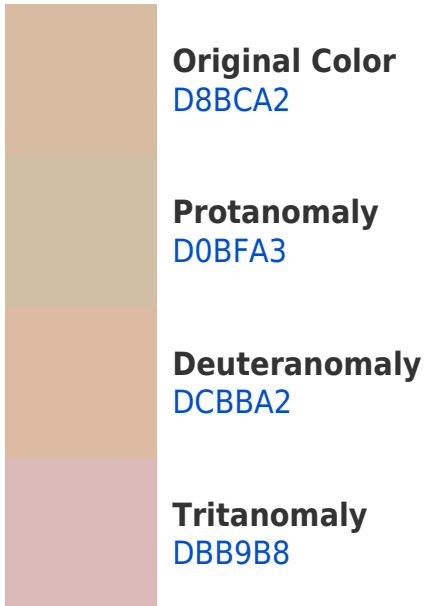
**Protanopia**  
CBC0A4

**Deuteranopia**  
DEBAA2



**Tritanopia**  
DCB7C5

# Trichromacy



# Monochromacy



# CSS Examples

## Text

The CSS property to change the color of the text to Hex D8BCA2 is called "color". The color property can be set on classes, ids or directly on the HTML element.

This example shows how text in the color #D8BCA2 looks like.

```
.text, #text, p{  
    color:#D8BCA2  
}
```

If you want to add a text shadow in that color use the text-shadow property, you can generate a text shadow directly with our [CSS Text Shadow Generator](#).

Here you see how black text with a 4 pixel #D8BCA2 colored shadow looks like.

```
.shadow{ text-shadow: 4px 4px 2px #D8BCA2
}
```

## Border

The CSS property to change the border of an element to Hex D8BCA2 is called "border". The border property can be set on classes, ids or directly on the HTML element.

This example shows the color as border, it can be applied via the CSS property "border" or "border-color".

```
.border, #border, table{ border:4px solid
#D8BCA2 }
```

If only the border color should be changed use the property `border-color`.

```
.border{ border-color:#D8BCA2 }
```

If you want to add a box shadow in that color use:

Here you see how a box with a 4 pixel #D8BCA2 colored shadow looks like.

```
.boxshadow{ -moz-box-shadow:4px 4px 4px  
4px #D8BCA2; -webkit-box-shadow:4px 4px  
4px 4px #D8BCA2; box-shadow:4px 4px 4px  
4px #D8BCA2 }
```

# Background

The CSS property to change the background color of an element to Hex D8BCA2 is called "background". The background property can be set on classes, ids or directly on the HTML element.

```
.background, #background, body{  
background:#D8BCA2 }
```

If only the background color should be changed can be used:

```
.background{ background-color:#D8BCA2 }
```

This example shows the color as background, it is applied via the CSS property "background".

To optimize and compress your CSS code, you can use our [online CSS compressor and optimizer](#) based on csstidy. If you want to create a linear or radial gradient as background or border, check our [CSS Gradient Generator](#).



Hey! You found this booklet interesting? Support Converting Colors with the new Membership Option!

The pro membership hides all ads, plus gives you double the colors in the color bucket, and more awesome pro features!

**[Learn more, Memberships starting at \\$2.50/m!](#)**

**Follow me  
on Twitter!**

@ConvertingColor