

# Converting Colors

Hex(D8BCB0)

Have a look what the booklet for  
Hex(D8BCB0) contains.

<b>Hex(D8BCB0)</b> .....	3
<b><i>Conversions</i></b> .....	4
<b><i>Details</i></b> .....	6
<b><i>Harmonies</i></b> .....	11
<b><i>Previews</i></b> .....	23
<b><i>Color Blindness Simulation</i></b> .....	26
<b><i>CSS Examples</i></b> .....	29

# **Color**

**Hex(D8BCB0)**

# Conversions

## Conversions Part 1

Format	Color
Hex	D8BCB0
RGB	216, 188, 176
RGB Percent	85%, 74%, 69%
CMY	0.1529, 0.2627, 0.3098
CMYK	0.00, 0.13, 0.19, 0.15
HSL	18°, 34%, 77%
HSV	18°, 19%, 85%
XYZ	54.1386, 53.7000, 48.5860
YIQ	195.0040, 20.5400, 2.2040

# Conversions

## Conversions Part 2

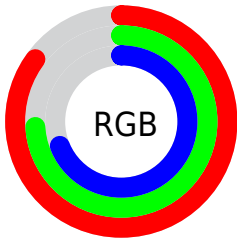
<b>Format</b>	<b>Color</b>
<b>R<sub>YB</sub></b>	216, 193, 176
Decimal	14204080
CIE Lab	78.29, 8.06, 9.73
CIE LCh	78, 12.637, 50.357
Yxy	53.7000, 0.3461, 0.3433
Android (android.graphics.Color)	4292394160 (0xFFD8BCB0)
YUV	195.0040, -9.3690, 18.4135
Hunter-Lab	73.2803, 3.6333, 11.9859

# Details

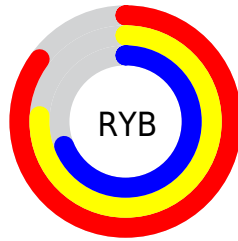
The Hex color **D8BCB0** is a light color, and the websafe version is hex **FFCCCC**. A complement of this color would be **B0CCD8**, and the grayscale version is **C3C3C3**.

A 20% lighter version of the original color is **FFF4E8**, and **A1877C** is the 20% darker color. If you saturate the color by 10%, you get **D8AD9A**, and if you desaturate by 10%, it is **D8CBC6**.

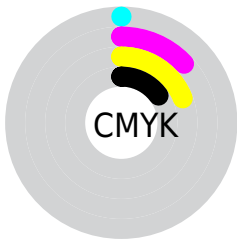
# Distribution



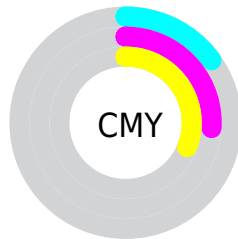
- Red (85%)
- Green (74%)
- Blue (69%)



- Red (85%)
- Yellow (76%)
- Blue (69%)



- Cyan (0%)
- Magenta (13%)
- Yellow (19%)
- Black (15%)



- Cyan (15%)
- Magenta (26%)
- Yellow (31%)

# Brightness & Saturation Gradients

These gradients show how the Hex color D8BCB0 changes by changing the brightness by 10 percent. The first figure shows a shift by +10% for each color and the second figure -10%.

Similar to the brightness gradients but the following saturation gradients show a change of the Hex color D8BCB0 by changing the saturation by 10% instead.



 D8BCB0

FFFFFF

 FFF4E8

 D8BCB0

 BCA195

 A1877C

 866D63

 6D554B

 543E34

 3C281F

 261407

 020000

 000000

 D8BCB0

 D8BCB0

 D8AD9A

 D8CBC6

 D89E85

 D8DADB

 D88F6F

 D8E9F1

 D8805A

 D8F8FF

 D87044

 D8FFFF

 D8612E

 D85219

 D84303

 D84100

# Harmonies

## Analogous

The Analogous color harmony consists of three colors that are next to each other on the color wheel.



DBBABA



D8BCB0



CFC0AB

# Triad

The Triadic color harmony groups three colors that are evenly spaced from another and form a triangle on the color wheel.



D8BCB0



AAC8BD



BFC0D7

# Complementary

The Complementary color scheme is a pair of colors which are on the opposite of each other on the color wheel.



D8BCB0



B0CCD8

# Split Complementary

Split-complementary colors differ from the complementary color scheme. The scheme consists of three colors, the original color and two neighbors of the complement color.



B1C4D8



D8BCB0



A4C9C9

# Square

The Square scheme is like the rectangle color scheme, but the four colors are evenly spaced on the color wheel.



D8BCB0



B5C7B2



A7C7D3



CDBCD1

# Rectangle

The Rectangle color scheme consists of four colors that form a rectangle on the color wheel.



D8BCB0



C7C2AB



A7C7D3



BAC1D9



# Sweetspot

The Sweet Spot groups the original color and five complimentary colors.



D8BCB0



FFF4F0



D8B0CC



807977



000000



808080

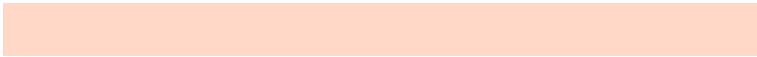


# Same Dimension

The Same Dimension uses a secret algorithm to generate beautiful new colors.



D8BCB0



FFD8C7



D8D0B0



6B6460



AB3300



2B0D00

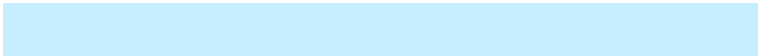


# Inverse Universe

The Inverse Universe completely reimagines the original color for something new.



B0CCD8



C7EEFF



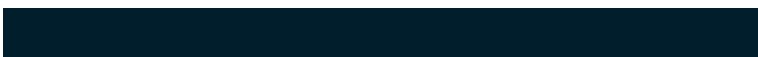
B0B8D8



60686B



0078AB



001E2B



# Previews

## White Background



This preview shows how the Hex color D8BCB0 looks on a white background.

## Color Contrast Check

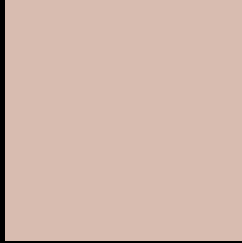
Large Text (above 18pt) WCAG AA × Fail

Any Text WCAG AA × Fail

Large Text (above 18pt) WCAG AAA × Fail

Any Text WCAG AAA × Fail

# Black Background



This preview shows how the Hex color D8BCB0 looks on a black background.

## Color Contrast Check

Large Text (above 18pt) WCAG AA ✓ Pass

Any Text WCAG AA ✓ Pass

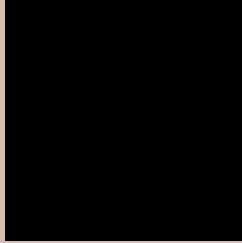
Large Text (above 18pt) WCAG AAA ✓ Pass

Any Text WCAG AAA ✓ Pass

If you want to check with other color combinations, try the [Color Contrast Checker](#).



## Hex D8BCB0 Background



This preview shows how black text looks on a background with the Hex color D8BCB0.

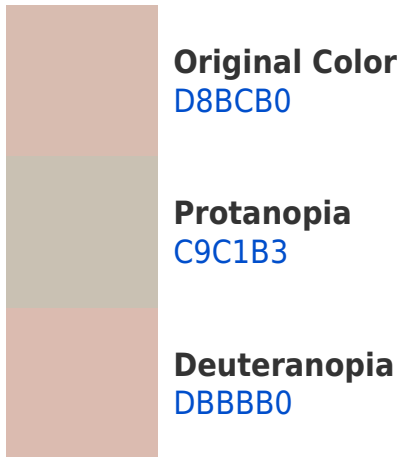


This preview shows how white text looks on a background with the Hex color D8BCB0.

# Color Blindness Simulation

Color vision deficiency is a very complex topic, and I could not describe the different causes any better than Wikipedia does, so if you want to learn more, you should check out their [article about color blindness](#).

## Dichromacy





**Tritanopia**  
DBB9C7

# Trichromacy



**Original Color**  
D8BCB0

**Protanomaly**  
CEBFB2

**Deuteranomaly**  
DABBB0

**Tritanomaly**  
DABABF

# Monochromacy



**Original Color**  
D8BCB0

**Achromatopsia**  
C3C3C3

**Achromatomaly**  
CBC0BC

# CSS Examples

## Text

The CSS property to change the color of the text to Hex D8BCB0 is called "color". The color property can be set on classes, ids or directly on the HTML element.

This example shows how text in the color #D8BCB0 looks like.

```
.text, #text, p{  
    color:#D8BCB0  
}
```

If you want to add a text shadow in that color use the text-shadow property, you can generate a text shadow directly with our [CSS Text Shadow Generator](#).

Here you see how black text with a 4 pixel #D8BCB0 colored shadow looks like.

```
.shadow{ text-shadow: 4px 4px 2px #D8BCB0
}
```

## Border

The CSS property to change the border of an element to Hex D8BCB0 is called "border". The border property can be set on classes, ids or directly on the HTML element.

This example shows the color as border, it can be applied via the CSS property "border" or "border-color".

```
.border, #border, table{ border:4px solid
#D8BCB0 }
```

If only the border color should be changed use the property `border-color`.

```
.border{ border-color:#D8BCB0 }
```

If you want to add a box shadow in that color use:

Here you see how a box with a 4 pixel #D8BCB0 colored shadow looks like.

```
.boxshadow{ -moz-box-shadow:4px 4px 4px  
4px #D8BCB0; -webkit-box-shadow:4px 4px  
4px 4px #D8BCB0; box-shadow:4px 4px 4px  
4px #D8BCB0 }
```

# Background

The CSS property to change the background color of an element to Hex D8BCB0 is called "background". The background property can be set on classes, ids or directly on the HTML element.

```
.background, #background, body{  
background:#D8BCB0 }
```

If only the background color should be changed can be used:

```
.background{ background-color:#D8BCB0 }
```

This example shows the color as background, it is applied via the CSS property "background".

To optimize and compress your CSS code, you can use our [online CSS compressor and optimizer](#) based on csstidy. If you want to create a linear or radial gradient as background or border, check our [CSS Gradient Generator](#).



Hey! You found this booklet interesting? Support Converting Colors with the new Membership Option!

The pro membership hides all ads, plus gives you double the colors in the color bucket, and more awesome pro features!

**[Learn more, Memberships starting at \\$2.50/m!](#)**

**Follow me  
on Twitter!**

@ConvertingColor