

Converting Colors

Hex(D8BCBA)

Have a look what the booklet for
Hex(D8BCBA) contains.

Hex(D8BCBA)	3
<i>Conversions</i>	4
<i>Details</i>	6
<i>Harmonies</i>	11
<i>Previews</i>	23
<i>Color Blindness Simulation</i>	26
<i>CSS Examples</i>	29

Color

Hex(D8BCBA)

Conversions

Conversions Part 1

Format	Color
Hex	D8BCBA
RGB	216, 188, 186
RGB Percent	85%, 74%, 73%
CMY	0.1529, 0.2627, 0.2706
CMYK	0.00, 0.13, 0.14, 0.15
HSL	4°, 28%, 79%
HSV	4°, 14%, 85%
XYZ	55.1650, 54.1105, 53.9912
YIQ	196.1440, 17.3300, 5.3140

Conversions

Conversions Part 2

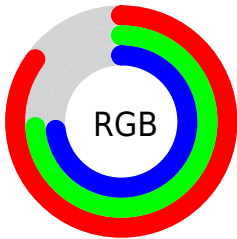
Format	Color
RYB	216, 188, 186
Decimal	14204090
CIELab	78.53, 9.63, 4.67
CIELCh	79, 10.707, 25.888
Yxy	54.1105, 0.3379, 0.3314
Android (android.graphics.Color)	4292394170 (0xFFD8BCBA)
YUV	196.1440, -5.0010, 17.4137
Hunter-Lab	73.5599, 5.1335, 7.9744

Details

The Hex color **D8BCBA** is a light color, and the websafe version is hex **CCCCCC**. A complement of this color would be **BAD6D8**, and the grayscale version is **C4C4C4**.

A 20% lighter version of the original color is **FFF4F2**, and **A18785** is the 20% darker color. If you saturate the color by 10%, you get **D8A8A4**, and if you desaturate by 10%, it is **D8D0D0**.

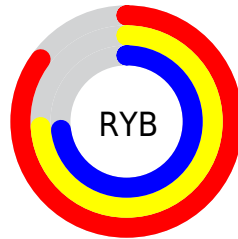
Distribution



Red (85%)

Green (74%)

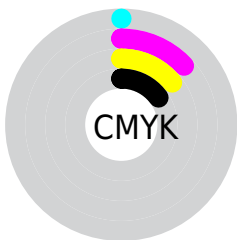
Blue (73%)



Red (85%)

Yellow (74%)

Blue (73%)

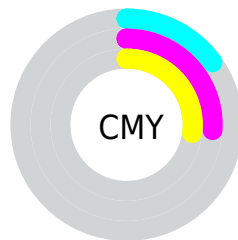


Cyan (0%)

Magenta (13%)

Yellow (14%)

Black (15%)



Cyan (15%)

Magenta (26%)

Yellow (27%)

Brightness & Saturation Gradients

These gradients show how the Hex color D8BCBA changes by changing the brightness by 10 percent. The first figure shows a shift by +10% for each color and the second figure -10%.

Similar to the brightness gradients but the following saturation gradients show a change of the Hex color D8BCBA by changing the saturation by 10% instead.

 D8BCBA

FFFFFF

 FFF4F2

 D8BCBA

 BCA19F

 A18785

 876D6C

 6D5554

 543E3C

 3D2827

 261312

 090000

 000000

 D8BCBA

 D8BCBA

 D8A8A4

 D8D0D0

 D8948F

 D8E4E5

 D88079

 D8F8FB

 D86B64

 D8FFFF

 D8574E

 D84338

 D82F23

 D81B0D

 D80E00

Harmonies

Analogous

The Analogous color harmony consists of three colors that are next to each other on the color wheel.



D6BCC4



D8BCBA



D4BEB2

Triad

The Triadic color harmony groups three colors that are evenly spaced from another and form a triangle on the color wheel.



D8BCBA



B6C7B7



B6C4D6

Complementary

The Complementary color scheme is a pair of colors which are on the opposite of each other on the color wheel.



D8BCBA



BAD6D8

Split Complementary

Split-complementary colors differ from the complementary color scheme. The scheme consists of three colors, the original color and two neighbors of the complement color.



ADC6D2



D8BCBA



ADC8C0

Square

The Square scheme is like the rectangle color scheme, but the four colors are evenly spaced on the color wheel.



D8BCBA



C1C4B0



AAC8CB



C3C0D4

Rectangle

The Rectangle color scheme consists of four colors that form a rectangle on the color wheel.



D8BCBA



CFC0AF



AAC8CB



B3C5D5

Sweetspot

The Sweet Spot groups the original color and five complimentary colors.



D8BCBA



FFF5F5



D8BAD6



807A79



000000



808080

Same Dimension

The Same Dimension uses a secret algorithm to generate beautiful new colors.



D8BCBA



FFD7D4



D8CBBA



6B6160



AB0B00



2B0300

Inverse Universe

The Inverse Universe completely reimagines the original color for something new.



BAD6D8



D4FCFF



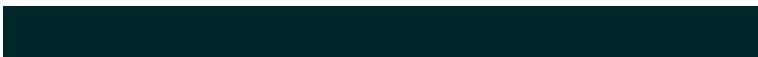
BAC7D8



606A6B



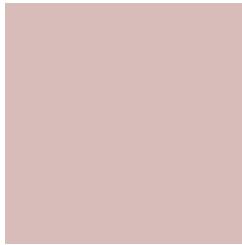
009FAB



00282B

Previews

White Background



This preview shows how the Hex color D8BCBA looks on a white background.

Color Contrast Check

Large Text (above 18pt) WCAG AA × Fail

Any Text WCAG AA × Fail

Large Text (above 18pt) WCAG AAA × Fail

Any Text WCAG AAA × Fail

Black Background



This preview shows how the Hex color D8BCBA looks on a black background.

Color Contrast Check

Large Text (above 18pt) WCAG AA ✓ Pass

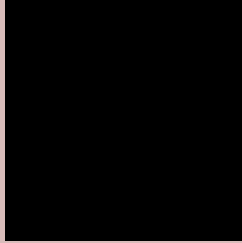
Any Text WCAG AA ✓ Pass

Large Text (above 18pt) WCAG AAA ✓ Pass

Any Text WCAG AAA ✓ Pass

If you want to check with other color combinations, try the [Color Contrast Checker](#).

Hex D8BCBA Background



This preview shows how black text looks on a background with the Hex color D8BCBA.

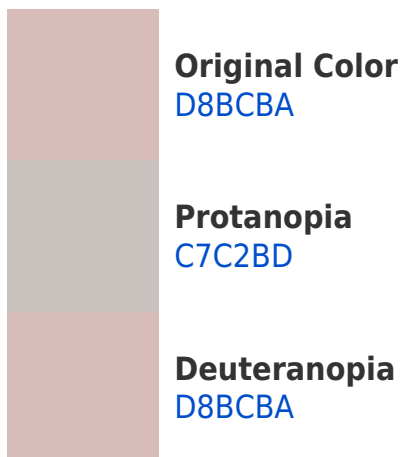


This preview shows how white text looks on a background with the Hex color D8BCBA.

Color Blindness Simulation

Color vision deficiency is a very complex topic, and I could not describe the different causes any better than Wikipedia does, so if you want to learn more, you should check out their [article about color blindness](#).

Dichromacy



Trichromacy



Original Color
D8BCBA

Protanomaly
CDC0BC

Deuteranomaly
D8BCBA

Tritanomaly
D9BBC3

Monochromacy



Original Color
D8BCBA

Achromatopsia
C4C4C4

Achromatomaly
CBC1C0

CSS Examples

Text

The CSS property to change the color of the text to Hex D8BCBA is called "color". The color property can be set on classes, ids or directly on the HTML element.

This example shows how text in the color #D8BCBA looks like.

```
.text, #text, p{  
  color:#D8BCBA  
}
```

If you want to add a text shadow in that color use the text-shadow property, you can generate a text shadow directly with our [CSS Text Shadow Generator](#).

Here you see how black text with a 4 pixel #D8BCBA colored shadow looks like.

```
.shadow{ text-shadow: 4px 4px 2px #D8BCBA
}
```

Border

The CSS property to change the border of an element to Hex D8BCBA is called "border". The border property can be set on classes, ids or directly on the HTML element.

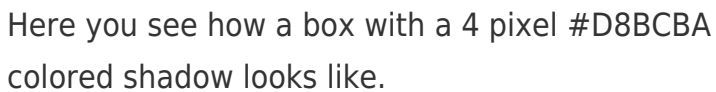
This example shows the color as border, it can be applied via the CSS property "border" or "border-color".

```
.border, #border, table{ border:4px solid
#D8BCBA }
```

If only the border color should be changed use the property `border-color`.

```
.border{ border-color:#D8BCBA }
```

If you want to add a box shadow in that color use:



Here you see how a box with a 4 pixel #D8BCBA colored shadow looks like.

```
.boxshadow{ -moz-box-shadow:4px 4px 4px  
4px #D8BCBA; -webkit-box-shadow:4px 4px  
4px 4px #D8BCBA; box-shadow:4px 4px 4px  
4px #D8BCBA }
```

Background

The CSS property to change the background color of an element to Hex D8BCBA is called "background". The background property can be set on classes, ids or directly on the HTML element.

```
.background, #background, body{  
background:#D8BCBA }
```

If only the background color should be changed can be used:

```
.background{ background-color:#D8BCBA }
```

This example shows the color as background, it is applied via the CSS property "background".

To optimize and compress your CSS code, you can use our [online CSS compressor and optimizer](#) based on csstidy. If you want to create a linear or radial gradient as background or border, check our [CSS Gradient Generator](#).

Hey! You found this booklet interesting? Support Converting Colors with the new Membership Option!

The pro membership hides all ads, plus gives you double the colors in the color bucket, and more awesome pro features!

[Learn more, Memberships starting at \\$2.50/m!](#)

**Follow me
on Twitter!**

@ConvertingColor