

# Converting Colors

Hex(D8C0C7)

Have a look what the booklet for  
Hex(D8C0C7) contains.

<b>Hex(D8C0C7)</b> .....	3
<i><b>Conversions</b></i> .....	4
<i><b>Details</b></i> .....	6
<i><b>Harmonies</b></i> .....	11
<i><b>Previews</b></i> .....	23
<i><b>Color Blindness Simulation</b></i> .....	26
<i><b>CSS Examples</b></i> .....	29

# **Color**

**Hex(D8C0C7)**

# Conversions

## Conversions Part 1

<b>Format</b>	<b>Color</b>
Hex	D8C0C7
RGB	216, 192, 199
RGB Percent	85%, 75%, 78%
CMY	0.1529, 0.2471, 0.2196
CMYK	0.00, 0.11, 0.08, 0.15
HSL	342°, 24%, 80%
HSV	342°, 11%, 85%
XYZ	57.4773, 56.4217, 61.8939
YIQ	199.9740, 12.0570, 7.2650

# Conversions

## Conversions Part 2

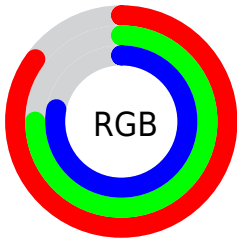
Format	Color
R <sub>Y</sub> B	216, 192, 199
Decimal	14205127
CIE Lab	79.85, 9.66, -0.41
CIE LCh	80, 9.669, 357.560
Yxy	56.4217, 0.3270, 0.3210
Android (android.graphics.Color)	4292395207 (0xFFD8C0C7)
YUV	199.9740, -0.4802, 14.0548
Hunter-Lab	75.1144, 5.1375, 3.7254

# Details

The Hex color **D8C0C7** is a light color, and the websafe version is hex **CCCCCC**. A complement of this color would be **C0D8D1**, and the grayscale version is **C8C8C8**.

A 20% lighter version of the original color is **FFF8FF**, and **A18B91** is the 20% darker color. If you saturate the color by 10%, you get **D8AAB8**, and if you desaturate by 10%, it is **D8D6D6**.

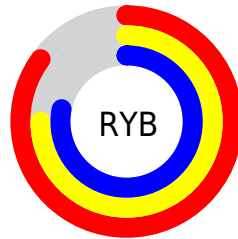
# Distribution



Red (85%)

Green (75%)

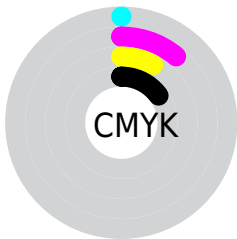
Blue (78%)



Red (85%)

Yellow (75%)

Blue (78%)

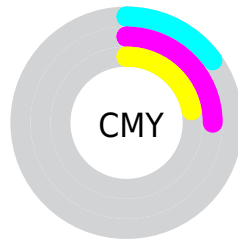


Cyan (0%)

Magenta (11%)

Yellow (8%)

Black (15%)



Cyan (15%)

Magenta (25%)

Yellow (22%)

# Brightness & Saturation Gradients

These gradients show how the Hex color D8C0C7 changes by changing the brightness by 10 percent. The first figure shows a shift by +10% for each color and the second figure -10%.

Similar to the brightness gradients but the following saturation gradients show a change of the Hex color D8C0C7 by changing the saturation by 10% instead.



 D8C0C7

FFFFFF

 FFF8FF

 D8C0C7

 BCA5AC

 A18B91

 877178

 6D595F

 554147

 3D2B31

 27161C

 140001

 000000

 D8C0C7

 D8C0C7

 D8AAB8

 D8D6D6

 D895A8

 D8EBE6

 D87F99

 D8FFF5

 D86A8A

 D8FFFF

 D8547B

 D83E6B

 D8295C

 D8134D

 D8003F

# Harmonies

## Analogous

The Analogous color harmony consists of three colors that are next to each other on the color wheel.



D1C1D0



D8C0C7



DAC0BE

# Triad

The Triadic color harmony groups three colors that are evenly spaced from another and form a triangle on the color wheel.



D8C0C7



C4C8B6



B3CAD5

# Complementary

The Complementary color scheme is a pair of colors which are on the opposite of each other on the color wheel.



D8C0C7



C0D8D1

# Split Complementary

Split-complementary colors differ from the complementary color scheme. The scheme consists of three colors, the original color and two neighbors of the complement color.



B0CBCE



D8C0C7



BACABC

# Square

The Square scheme is like the rectangle color scheme, but the four colors are evenly spaced on the color wheel.



D8C0C7



CEC5B4



B2CBC5



BCC7D8

# Rectangle

The Rectangle color scheme consists of four colors that form a rectangle on the color wheel.



D8C0C7



D8C1B9



B2CBC5



B1CAD3

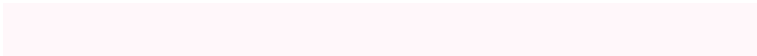


# Sweetspot

The Sweet Spot groups the original color and five complimentary colors.



D8C0C7



FFF7FA



D1C0D8



807A7C



000000



808080



# Same Dimension

The Same Dimension uses a secret algorithm to generate beautiful new colors.



D8C0C7



FFDEE8



D8C5C0



6B6064



AB0032



2B000D



# Inverse Universe

The Inverse Universe completely reimagines the original color for something new.



D8C0C7



FFDEE8



C0D3D8



6B6064



AB0032

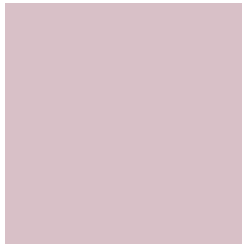


2B000D



# Previews

## White Background



This preview shows how the Hex color D8C0C7 looks on a white background.

## Color Contrast Check

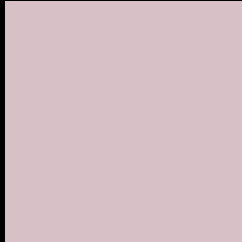
Large Text (above 18pt) WCAG AA × Fail

Any Text WCAG AA × Fail

Large Text (above 18pt) WCAG AAA × Fail

Any Text WCAG AAA × Fail

# Black Background



This preview shows how the Hex color D8C0C7 looks on a black background.

## Color Contrast Check

Large Text (above 18pt) WCAG AA ✓ Pass

Any Text WCAG AA ✓ Pass

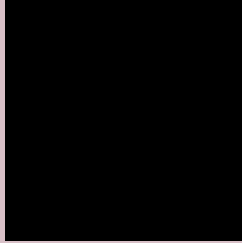
Large Text (above 18pt) WCAG AAA ✓ Pass

Any Text WCAG AAA ✓ Pass

If you want to check with other color combinations, try the [Color Contrast Checker](#).



## Hex D8C0C7 Background



This preview shows how black text looks on a background with the Hex color D8C0C7.

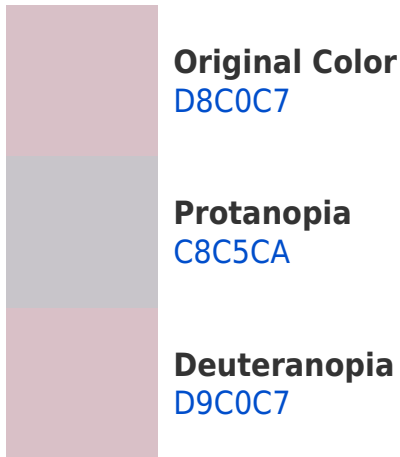


This preview shows how white text looks on a background with the Hex color D8C0C7.

# Color Blindness Simulation

Color vision deficiency is a very complex topic, and I could not describe the different causes any better than Wikipedia does, so if you want to learn more, you should check out their [article about color blindness](#).

## Dichromacy





**Tritanopia**  
D9BFCE

# Trichromacy



**Original Color**  
D8C0C7

**Protanomaly**  
CEC3C9

**Deuteranomaly**  
D9C0C7

**Tritanomaly**  
D9BFCB

# Monochromacy



**Original Color**  
D8C0C7

**Achromatopsia**  
C8C8C8

**Achromatomaly**  
CEC5C8

# CSS Examples

## Text

The CSS property to change the color of the text to Hex D8C0C7 is called "color". The color property can be set on classes, ids or directly on the HTML element.

This example shows how text in the color #D8C0C7 looks like.

```
.text, #text, p{  
    color:#D8C0C7  
}
```

If you want to add a text shadow in that color use the text-shadow property, you can generate a text shadow directly with our [CSS Text Shadow Generator](#).

Here you see how black text with a 4 pixel #D8C0C7 colored shadow looks like.

```
.shadow{ text-shadow: 4px 4px 2px #D8C0C7  
}
```

## Border

The CSS property to change the border of an element to Hex D8C0C7 is called "border". The border property can be set on classes, ids or directly on the HTML element.

This example shows the color as border, it can be applied via the CSS property "border" or "border-color".

```
.border, #border, table{ border:4px solid  
#D8C0C7 }
```

If only the border color should be changed use the property `border-color`.

```
.border{ border-color:#D8C0C7 }
```

If you want to add a box shadow in that color use:

Here you see how a box with a 4 pixel #D8C0C7 colored shadow looks like.

```
.boxshadow{ -moz-box-shadow:4px 4px 4px  
4px #D8C0C7; -webkit-box-shadow:4px 4px  
4px 4px #D8C0C7; box-shadow:4px 4px 4px  
4px #D8C0C7 }
```

# Background

The CSS property to change the background color of an element to Hex D8C0C7 is called "background". The background property can be set on classes, ids or directly on the HTML element.

```
.background, #background, body{  
background:#D8C0C7 }
```

If only the background color should be changed can be used:

```
.background{ background-color:#D8C0C7 }
```

This example shows the color as background, it is applied via the CSS property "background".

To optimize and compress your CSS code, you can use our [online CSS compressor and optimizer](#) based on csstidy. If you want to create a linear or radial gradient as background or border, check our [CSS Gradient Generator](#).



Hey! You found this booklet interesting? Support Converting Colors with the new Membership Option!

The pro membership hides all ads, plus gives you double the colors in the color bucket, and more awesome pro features!

**[Learn more, Memberships starting at \\$2.50/m!](#)**

**Follow me  
on Twitter!**

@ConvertingColor