

Converting Colors

Hex(D8C2C0)

Have a look what the booklet for
Hex(D8C2C0) contains.

Hex(D8C2C0)	3
<i>Conversions</i>	4
<i>Details</i>	6
<i>Harmonies</i>	11
<i>Previews</i>	23
<i>Color Blindness Simulation</i>	26
<i>CSS Examples</i>	29

Color

Hex(D8C2C0)

Conversions

Conversions Part 1

Format	Color
Hex	D8C2C0
RGB	216, 194, 192
RGB Percent	85%, 76%, 75%
CMY	0.1529, 0.2392, 0.2471
CMYK	0.00, 0.10, 0.11, 0.15
HSL	5°, 24%, 80%
HSV	5°, 11%, 85%
XYZ	57.1251, 56.9883, 57.8582
YIQ	200.3500, 13.7540, 4.0420

Conversions

Conversions Part 2

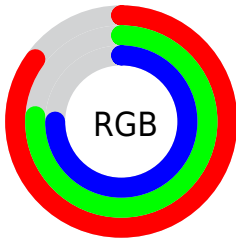
Format	Color
R _Y B	216, 194, 192
Decimal	14205632
CIE Lab	80.17, 7.42, 3.82
CIE LCh	80, 8.343, 27.263
Yxy	56.9883, 0.3322, 0.3314
Android (android.graphics.Color)	4292395712 (0xFFD8C2C0)
YUV	200.3500, -4.1165, 13.7251
Hunter-Lab	75.4906, 2.9657, 7.4018

Details

The Hex color **D8C2C0** is a light color, and the websafe version is hex **CCCCCC**. A complement of this color would be **C0D6D8**, and the grayscale version is **C8C8C8**.

A 20% lighter version of the original color is **FFFAF8**, and **A18C8B** is the 20% darker color. If you saturate the color by 10%, you get **D8AEAA**, and if you desaturate by 10%, it is **D8D6D6**.

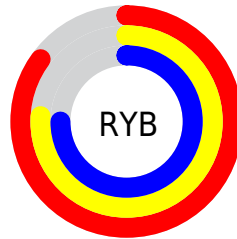
Distribution



Red (85%)

Green (76%)

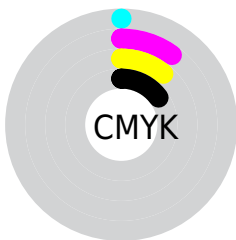
Blue (75%)



Red (85%)

Yellow (76%)

Blue (75%)

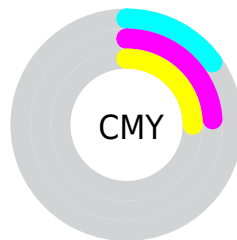


Cyan (0%)

Magenta (10%)

Yellow (11%)

Black (15%)



Cyan (15%)

Magenta (24%)

Yellow (25%)

Brightness & Saturation Gradients

These gradients show how the Hex color D8C2C0 changes by changing the brightness by 10 percent. The first figure shows a shift by +10% for each color and the second figure -10%.

Similar to the brightness gradients but the following saturation gradients show a change of the Hex color D8C2C0 by changing the saturation by 10% instead.

 D8C2C0

 D8C2C0

FFFFFF

 BCA7A5

 FFFAF8

 A18C8B

 877371

 6D5A59

 554341

 3D2D2B

 271817

 120000

 000000

 D8C2C0

 D8C2C0

 D8AEAA

 D8D6D6

 D89A95

 D8EAEB

 D8877F

 D8FDFD

 D8736A

 D8FFFF

 D85F54

 D84B3E

 D83729

 D82413

 D81200

Harmonies

Analogous

The Analogous color harmony consists of three colors that are next to each other on the color wheel.



D6C2C8



D8C2C0



D5C4BA

Triad

The Triadic color harmony groups three colors that are evenly spaced from another and form a triangle on the color wheel.



D8C2C0



BDCBBE



BEC8D6

Complementary

The Complementary color scheme is a pair of colors which are on the opposite of each other on the color wheel.



D8C2C0



C0D6D8

Split Complementary

Split-complementary colors differ from the complementary color scheme. The scheme consists of three colors, the original color and two neighbors of the complement color.



B7CAD4



D8C2C0



B6CCC6

Square

The Square scheme is like the rectangle color scheme, but the four colors are evenly spaced on the color wheel.



D8C2C0



C5C9B9



B4CBCE



C8C5D5

Rectangle

The Rectangle color scheme consists of four colors that form a rectangle on the color wheel.



D8C2C0



D1C5B8



B4CBCE



BBC9D6

Sweetspot

The Sweet Spot groups the original color and five complimentary colors.



D8C2C0



FFF8F7



D8C0D6



807B7A



000000



808080

Same Dimension

The Same Dimension uses a secret algorithm to generate beautiful new colors.



D8C2C0



FFE1DE



D8CEC0



6B6160



AB0E00



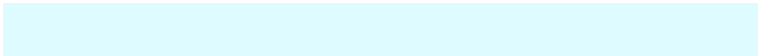
2B0400

Inverse Universe

The Inverse Universe completely reimagines the original color for something new.



C0D6D8



DEFCFF



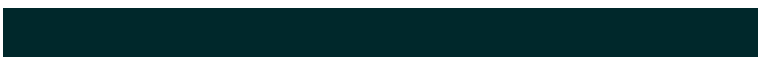
C0CAD8



606A6B



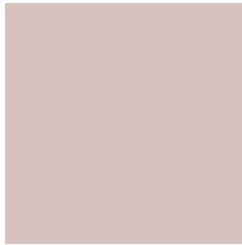
009DAB



00282B

Previews

White Background



This preview shows how the Hex color D8C2C0 looks on a white background.

Color Contrast Check

Large Text (above 18pt) WCAG AA × Fail

Any Text WCAG AA × Fail

Large Text (above 18pt) WCAG AAA × Fail

Any Text WCAG AAA × Fail

Black Background



This preview shows how the Hex color D8C2C0 looks on a black background.

Color Contrast Check

Large Text (above 18pt) WCAG AA ✓ Pass

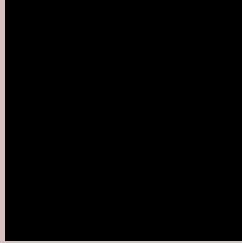
Any Text WCAG AA ✓ Pass

Large Text (above 18pt) WCAG AAA ✓ Pass

Any Text WCAG AAA ✓ Pass

If you want to check with other color combinations, try the [Color Contrast Checker](#).

Hex D8C2C0 Background



This preview shows how black text looks on a background with the Hex color D8C2C0.

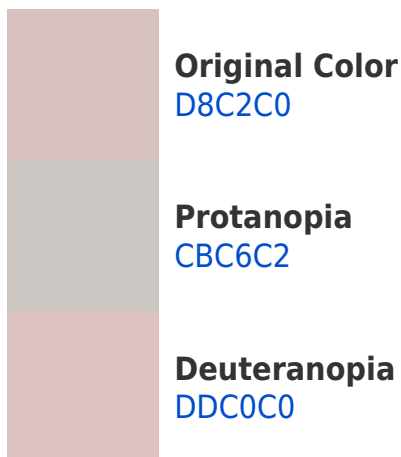


This preview shows how white text looks on a background with the Hex color D8C2C0.

Color Blindness Simulation

Color vision deficiency is a very complex topic, and I could not describe the different causes any better than Wikipedia does, so if you want to learn more, you should check out their [article about color blindness](#).

Dichromacy



Trichromacy



Original Color
D8C2C0

Protanomaly
D0C5C1

Deuteranomaly
DBC1C0

Tritanomaly
D9C1CA

Monochromacy



Original Color
D8C2C0

Achromatopsia
C8C8C8

Achromatomaly
CEC6C5

CSS Examples

Text

The CSS property to change the color of the text to Hex D8C2C0 is called "color". The color property can be set on classes, ids or directly on the HTML element.

This example shows how text in the color #D8C2C0 looks like.

```
.text, #text, p{  
    color:#D8C2C0  
}
```

If you want to add a text shadow in that color use the text-shadow property, you can generate a text shadow directly with our [CSS Text Shadow Generator](#).

Here you see how black text with a 4 pixel #D8C2C0 colored shadow looks like.

```
.shadow{ text-shadow: 4px 4px 2px #D8C2C0
}
```

Border

The CSS property to change the border of an element to Hex D8C2C0 is called "border". The border property can be set on classes, ids or directly on the HTML element.

This example shows the color as border, it can be applied via the CSS property "border" or "border-color".

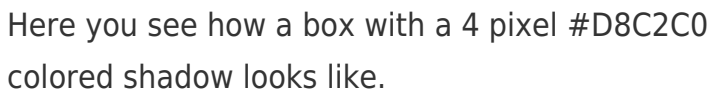
```
.border, #border, table{ border:4px solid
#D8C2C0 }
```

If only the border color should be changed use the property `border-color`.

```
.border{ border-color:#D8C2C0 }
```

If you want to add a box shadow in that color use:

Here you see how a box with a 4 pixel #D8C2C0 colored shadow looks like.



```
.boxshadow{ -moz-box-shadow:4px 4px 4px  
4px #D8C2C0; -webkit-box-shadow:4px 4px  
4px 4px #D8C2C0; box-shadow:4px 4px 4px  
4px #D8C2C0 }
```

Background

The CSS property to change the background color of an element to Hex D8C2C0 is called "background". The background property can be set on classes, ids or directly on the HTML element.

```
.background, #background, body{  
background:#D8C2C0 }
```

If only the background color should be changed can be used:

```
.background{ background-color:#D8C2C0 }
```

This example shows the color as background, it is applied via the CSS property "background".

To optimize and compress your CSS code, you can use our [online CSS compressor and optimizer](#) based on csstidy. If you want to create a linear or radial gradient as background or border, check our [CSS Gradient Generator](#).

Hey! You found this booklet interesting? Support Converting Colors with the new Membership Option!

The pro membership hides all ads, plus gives you double the colors in the color bucket, and more awesome pro features!

[Learn more, Memberships starting at \\$2.50/m!](#)

**Follow me
on Twitter!**

@ConvertingColor