

Converting Colors

Hex(D8C4C4)

Have a look what the booklet for
Hex(D8C4C4) contains.

Hex(D8C4C4)	3
<i>Conversions</i>	4
<i>Details</i>	6
<i>Harmonies</i>	11
<i>Previews</i>	23
<i>Color Blindness Simulation</i>	26
<i>CSS Examples</i>	29

Color

Hex(D8C4C4)

Conversions

Conversions Part 1

Format	Color
Hex	D8C4C4
RGB	216, 196, 196
RGB Percent	85%, 77%, 77%
CMY	0.1529, 0.2314, 0.2314
CMYK	0.00, 0.09, 0.09, 0.15
HSL	0°, 20%, 81%
HSV	0°, 9%, 85%
XYZ	58.0226, 58.0643, 60.3740
YIQ	201.9800, 11.9200, 4.2400

Conversions

Conversions Part 2

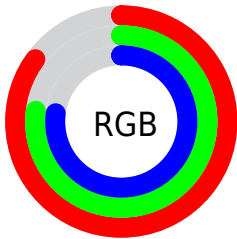
Format	Color
R _Y B	216, 196, 196
Decimal	14206148
CIE Lab	80.77, 7.02, 2.54
CIE LCh	81, 7.469, 19.917
Yxy	58.0643, 0.3288, 0.3290
Android (android.graphics.Color)	4292396228 (0xFFD8C4C4)
YUV	201.9800, -2.9481, 12.2955
Hunter-Lab	76.1999, 2.5694, 6.3639

Details

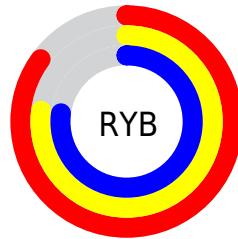
The Hex color **D8C4C4** is a light color, and the websafe version is hex **CCCCCC**. A complement of this color would be **C4D8D8**, and the grayscale version is **CACACA**.

A 20% lighter version of the original color is **FFFDFD**, and **A18E8E** is the 20% darker color. If you saturate the color by 10%, you get **D8AEAE**, and if you desaturate by 10%, it is **D8DADA**.

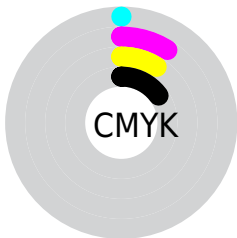
Distribution



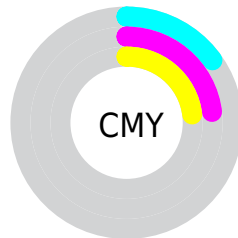
- Red (85%)
- Green (77%)
- Blue (77%)



- Red (85%)
- Yellow (77%)
- Blue (77%)



- Cyan (0%)
- Magenta (9%)
- Yellow (9%)
- Black (15%)



- Cyan (15%)
- Magenta (23%)
- Yellow (23%)

Brightness & Saturation Gradients

These gradients show how the Hex color D8C4C4 changes by changing the brightness by 10 percent. The first figure shows a shift by +10% for each color and the second figure -10%.

Similar to the brightness gradients but the following saturation gradients show a change of the Hex color D8C4C4 by changing the saturation by 10% instead.

 D8C4C4

FFFFFF

 FFFDFD

 D8C4C4

 BCA9A9

 A18E8E

 877575

 6D5C5C

 554545

 3E2E2E

 27191A

 140000

 000000

 D8C4C4

 D8C4C4

 D8AEAE

 D8DADA

 D89999

 D8EFEF

 D88383

 D8FFFF

 D86E6E

 D85858

 D84242

 D82D2D

 D81717

 D80202

Harmonies

Analogous

The Analogous color harmony consists of three colors that are next to each other on the color wheel.



D6C4CB



D8C4C4



D6C5BE

Triad

The Triadic color harmony groups three colors that are evenly spaced from another and form a triangle on the color wheel.



D8C4C4



C1CBBF



BFCAD6

Complementary

The Complementary color scheme is a pair of colors which are on the opposite of each other on the color wheel.



D8C4C4



C4D8D8

Split Complementary

Split-complementary colors differ from the complementary color scheme. The scheme consists of three colors, the original color and two neighbors of the complement color.



B9CCD3



D8C4C4



BBCDC6

Square

The Square scheme is like the rectangle color scheme, but the four colors are evenly spaced on the color wheel.



D8C4C4



C9C9BB



B8CDCD



C7C7D6

Rectangle

The Rectangle color scheme consists of four colors that form a rectangle on the color wheel.



D8C4C4



D3C6BC



B8CDCD



BDCBD5

Sweetspot

The Sweet Spot groups the original color and five complimentary colors.



D8C4C4



FFF7F7



D8C4D8



807A7A



000000



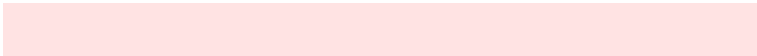
808080

Same Dimension

The Same Dimension uses a secret algorithm to generate beautiful new colors.



D8C4C4



FFE3E3



D8CEC4



6B6060



AB0000



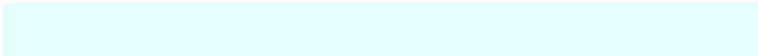
2B0000

Inverse Universe

The Inverse Universe completely reimagines the original color for something new.



C4D8D8



E3FFFF



C4CED8



606B6B



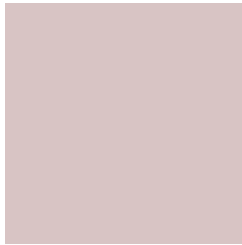
00ABAB



002B2B

Previews

White Background



This preview shows how the Hex color D8C4C4 looks on a white background.

Color Contrast Check

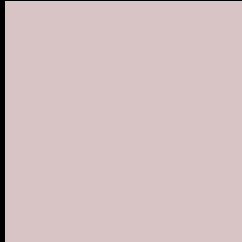
Large Text (above 18pt) WCAG AA × Fail

Any Text WCAG AA × Fail

Large Text (above 18pt) WCAG AAA × Fail

Any Text WCAG AAA × Fail

Black Background



This preview shows how the Hex color D8C4C4 looks on a black background.

Color Contrast Check

Large Text (above 18pt) WCAG AA ✓ Pass

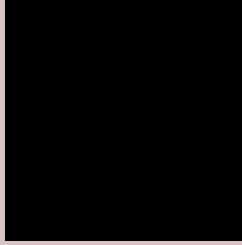
Any Text WCAG AA ✓ Pass

Large Text (above 18pt) WCAG AAA ✓ Pass

Any Text WCAG AAA ✓ Pass

If you want to check with other color combinations, try the [Color Contrast Checker](#).

Hex D8C4C4 Background



This preview shows how black text looks on a background with the Hex color D8C4C4.



This preview shows how white text looks on a background with the Hex color D8C4C4.

Color Blindness Simulation

Color vision deficiency is a very complex topic, and I could not describe the different causes any better than Wikipedia does, so if you want to learn more, you should check out their [article about color blindness](#).

Dichromacy



Original Color
D8C4C4

Protanopia
CDC8C6

Deuteranopia
DDC2C4



Tritanopia
DAC2D1

Trichromacy



Original Color
D8C4C4

Protanomaly
D1C7C5

Deuteranomaly
DBC3C4

Tritanomaly
D9C3CC

Monochromacy



Original Color
D8C4C4

Achromatopsia
CACACA

Achromatomaly
CFC8C8

CSS Examples

Text

The CSS property to change the color of the text to Hex D8C4C4 is called "color". The color property can be set on classes, ids or directly on the HTML element.

This example shows how text in the color #D8C4C4 looks like.

```
.text, #text, p{  
    color:#D8C4C4  
}
```

If you want to add a text shadow in that color use the text-shadow property, you can generate a text shadow directly with our [CSS Text Shadow Generator](#).

Here you see how black text with a 4 pixel #D8C4C4 colored shadow looks like.

```
.shadow{ text-shadow: 4px 4px 2px #D8C4C4
}
```

Border

The CSS property to change the border of an element to Hex D8C4C4 is called "border". The border property can be set on classes, ids or directly on the HTML element.

This example shows the color as border, it can be applied via the CSS property "border" or "border-color".

```
.border, #border, table{ border:4px solid
#D8C4C4 }
```

If only the border color should be changed use the property `border-color`.

```
.border{ border-color:#D8C4C4 }
```

If you want to add a box shadow in that color use:

Here you see how a box with a 4 pixel #D8C4C4 colored shadow looks like.

```
.boxshadow{ -moz-box-shadow:4px 4px 4px  
4px #D8C4C4; -webkit-box-shadow:4px 4px  
4px 4px #D8C4C4; box-shadow:4px 4px 4px  
4px #D8C4C4 }
```

Background

The CSS property to change the background color of an element to Hex D8C4C4 is called "background". The background property can be set on classes, ids or directly on the HTML element.

```
.background, #background, body{  
background:#D8C4C4 }
```

If only the background color should be changed can be used:

```
.background{ background-color:#D8C4C4 }
```

This example shows the color as background, it is applied via the CSS property "background".

To optimize and compress your CSS code, you can use our [online CSS compressor and optimizer](#) based on csstidy. If you want to create a linear or radial gradient as background or border, check our [CSS Gradient Generator](#).

Hey! You found this booklet interesting? Support Converting Colors with the new Membership Option!

The pro membership hides all ads, plus gives you double the colors in the color bucket, and more awesome pro features!

[Learn more, Memberships starting at \\$2.50/m!](#)

**Follow me
on Twitter!**

@ConvertingColor