

Converting Colors

Hex(D8C4C5)

Have a look what the booklet for
Hex(D8C4C5) contains.

Hex(D8C4C5)	3
<i>Conversions</i>	4
<i>Details</i>	6
<i>Harmonies</i>	11
<i>Previews</i>	23
<i>Color Blindness Simulation</i>	26
<i>CSS Examples</i>	29

Color

Hex(D8C4C5)

Conversions

Conversions Part 1

Format	Color
Hex	D8C4C5
RGB	216, 196, 197
RGB Percent	85%, 77%, 77%
CMY	0.1529, 0.2314, 0.2275
CMYK	0.00, 0.09, 0.09, 0.15
HSL	357°, 20%, 81%
HSV	357°, 9%, 85%
XYZ	58.1369, 58.1100, 60.9755
YIQ	202.0940, 11.5990, 4.5510

Conversions

Conversions Part 2

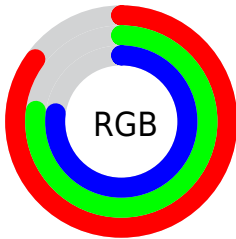
Format	Color
R _Y B	216, 196, 197
Decimal	14206149
CIE Lab	80.80, 7.19, 2.04
CIE LCh	81, 7.476, 15.868
Yxy	58.1100, 0.3280, 0.3279
Android (android.graphics.Color)	4292396229 (0xFFD8C4C5)
YUV	202.0940, -2.5113, 12.1956
Hunter-Lab	76.2299, 2.7310, 5.9355

Details

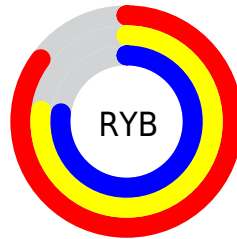
The Hex color **D8C4C5** is a light color, and the websafe version is hex **CCCCCC**. A complement of this color would be **C4D8D7**, and the grayscale version is **CACACA**.

A 20% lighter version of the original color is **FFDFE**, and **A18E8F** is the 20% darker color. If you saturate the color by 10%, you get **D8AEB0**, and if you desaturate by 10%, it is **D8DADA**.

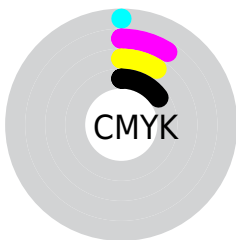
Distribution



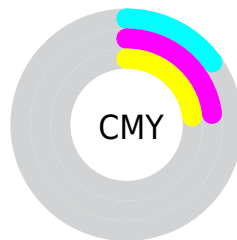
- Red (85%)
- Green (77%)
- Blue (77%)



- Red (85%)
- Yellow (77%)
- Blue (77%)



- Cyan (0%)
- Magenta (9%)
- Yellow (9%)
- Black (15%)



- Cyan (15%)
- Magenta (23%)
- Yellow (23%)

Brightness & Saturation Gradients

These gradients show how the Hex color D8C4C5 changes by changing the brightness by 10 percent. The first figure shows a shift by +10% for each color and the second figure -10%.

Similar to the brightness gradients but the following saturation gradients show a change of the Hex color D8C4C5 by changing the saturation by 10% instead.

 D8C4C5

FFFFFF

 FFFDFE

 D8C4C5

 BCA9AA

 A18E8F

 877576

 6D5C5D

 554546

 3E2E2F

 27191B

 140000

 000000

 D8C4C5

 D8C4C5

 D8AEB0

 D8DADA

 D8999C

 D8EFEE

 D88387

 D8FFFF

 D86E73

 D8585E

 D8424A

 D82D35

 D81721

 D8020C

Harmonies

Analogous

The Analogous color harmony consists of three colors that are next to each other on the color wheel.



D5C4CC



D8C4C5



D7C5BF

Triad

The Triadic color harmony groups three colors that are evenly spaced from another and form a triangle on the color wheel.



D8C4C5



C2CBBF



BECAD6

Complementary

The Complementary color scheme is a pair of colors which are on the opposite of each other on the color wheel.



D8C4C5



C4D8D7

Split Complementary

Split-complementary colors differ from the complementary color scheme. The scheme consists of three colors, the original color and two neighbors of the complement color.



B9CCD2



D8C4C5



BBCDC5

Square

The Square scheme is like the rectangle color scheme, but the four colors are evenly spaced on the color wheel.



D8C4C5



CBC9BB



B8CDCC



C6C8D6

Rectangle

The Rectangle color scheme consists of four colors that form a rectangle on the color wheel.



D8C4C5



D4C6BC



B8CDCC



BCCBD5

Sweetspot

The Sweet Spot groups the original color and five complimentary colors.



D8C4C5



FFF7F8



D7C4D8



807A7B



000000



808080

Same Dimension

The Same Dimension uses a secret algorithm to generate beautiful new colors.



D8C4C5



FFE3E4



D8CDC4



6B6061



AB0009



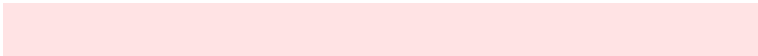
2B0002

Inverse Universe

The Inverse Universe completely reimagines the original color for something new.



D8C4C5



FFE3E4



C4CFD8



6B6061



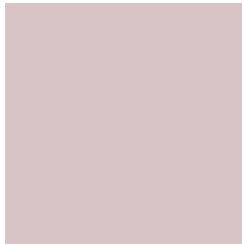
AB0009



2B0002

Previews

White Background



This preview shows how the Hex color D8C4C5 looks on a white background.

Color Contrast Check

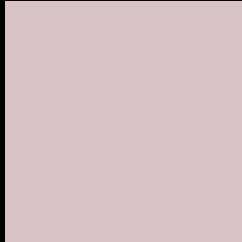
Large Text (above 18pt) WCAG AA × Fail

Any Text WCAG AA × Fail

Large Text (above 18pt) WCAG AAA × Fail

Any Text WCAG AAA × Fail

Black Background



This preview shows how the Hex color D8C4C5 looks on a black background.

Color Contrast Check

Large Text (above 18pt) WCAG AA ✓ Pass

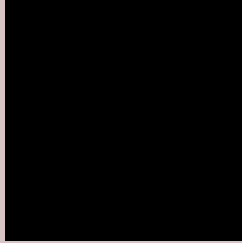
Any Text WCAG AA ✓ Pass

Large Text (above 18pt) WCAG AAA ✓ Pass

Any Text WCAG AAA ✓ Pass

If you want to check with other color combinations, try the [Color Contrast Checker](#).

Hex D8C4C5 Background



This preview shows how black text looks on a background with the Hex color D8C4C5.

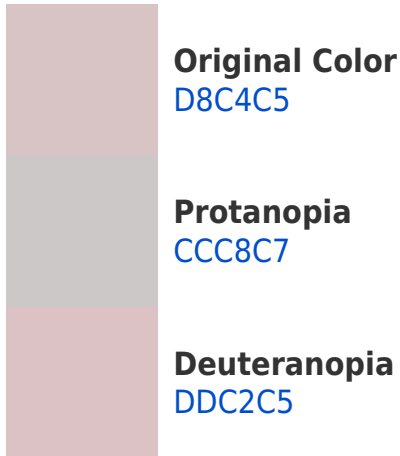


This preview shows how white text looks on a background with the Hex color D8C4C5.

Color Blindness Simulation

Color vision deficiency is a very complex topic, and I could not describe the different causes any better than Wikipedia does, so if you want to learn more, you should check out their [article about color blindness](#).

Dichromacy





Tritanopia
DAC2D1

Trichromacy



Original Color
D8C4C5

Protanomaly
D0C7C6

Deuteranomaly
DBC3C5

Tritanomaly
D9C3CD

Monochromacy



Original Color
D8C4C5

Achromatopsia
CACACA

Achromatomaly
CFC8C8

CSS Examples

Text

The CSS property to change the color of the text to Hex D8C4C5 is called "color". The color property can be set on classes, ids or directly on the HTML element.

This example shows how text in the color #D8C4C5 looks like.

```
.text, #text, p{  
    color:#D8C4C5  
}
```

If you want to add a text shadow in that color use the text-shadow property, you can generate a text shadow directly with our [CSS Text Shadow Generator](#).

Here you see how black text with a 4 pixel #D8C4C5 colored shadow looks like.

```
.shadow{ text-shadow: 4px 4px 2px #D8C4C5
}
```

Border

The CSS property to change the border of an element to Hex D8C4C5 is called "border". The border property can be set on classes, ids or directly on the HTML element.

This example shows the color as border, it can be applied via the CSS property "border" or "border-color".

```
.border, #border, table{ border:4px solid
#D8C4C5 }
```

If only the border color should be changed use the property `border-color`.

```
.border{ border-color:#D8C4C5 }
```

If you want to add a box shadow in that color use:

Here you see how a box with a 4 pixel #D8C4C5 colored shadow looks like.

```
.boxshadow{ -moz-box-shadow:4px 4px 4px  
4px #D8C4C5; -webkit-box-shadow:4px 4px  
4px 4px #D8C4C5; box-shadow:4px 4px 4px  
4px #D8C4C5 }
```

Background

The CSS property to change the background color of an element to Hex D8C4C5 is called "background". The background property can be set on classes, ids or directly on the HTML element.

```
.background, #background, body{  
background:#D8C4C5 }
```

If only the background color should be changed can be used:

```
.background{ background-color:#D8C4C5 }
```

This example shows the color as background, it is applied via the CSS property "background".

To optimize and compress your CSS code, you can use our [online CSS compressor and optimizer](#) based on csstidy. If you want to create a linear or radial gradient as background or border, check our [CSS Gradient Generator](#).

Hey! You found this booklet interesting? Support Converting Colors with the new Membership Option!

The pro membership hides all ads, plus gives you double the colors in the color bucket, and more awesome pro features!

[Learn more, Memberships starting at \\$2.50/m!](#)

**Follow me
on Twitter!**

@ConvertingColor