

Converting Colors

Hex(D8C8C3)

Have a look what the booklet for
Hex(D8C8C3) contains.

Hex(D8C8C3)	3
<i>Conversions</i>	4
<i>Details</i>	6
<i>Harmonies</i>	11
<i>Previews</i>	23
<i>Color Blindness Simulation</i>	26
<i>CSS Examples</i>	29

Color

Hex(D8C8C3)

Conversions

Conversions Part 1

Format	Color
Hex	D8C8C3
RGB	216, 200, 195
RGB Percent	85%, 78%, 76%
CMY	0.1529, 0.2157, 0.2353
CMYK	0.00, 0.07, 0.10, 0.15
HSL	14°, 21%, 81%
HSV	14°, 10%, 85%
XYZ	58.8235, 59.8476, 60.0812
YIQ	204.2140, 11.1410, 1.8370

Conversions

Conversions Part 2

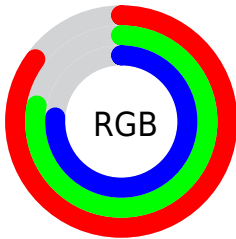
Format	Color
R _Y B	216, 202, 195
Decimal	14207171
CIE Lab	81.76, 4.74, 4.50
CIE LCh	82, 6.535, 43.538
Yxy	59.8476, 0.3291, 0.3348
Android (android.graphics.Color)	4292397251 (0xFFD8C8C3)
YUV	204.2140, -4.5425, 10.3363
Hunter-Lab	77.3612, 0.3447, 8.1064

Details

The Hex color **D8C8C3** is a light color, and the websafe version is hex **CCCCCC**. A complement of this color would be **C3D3D8**, and the grayscale version is **CCCCCC**.

A 20% lighter version of the original color is **FFFFFFC**, and **A1928D** is the 20% darker color. If you saturate the color by 10%, you get **D8B8AD**, and if you desaturate by 10%, it is **D8D8D9**.

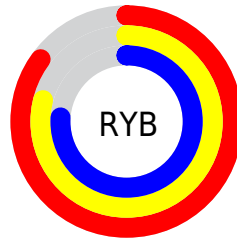
Distribution



Red (85%)

Green (78%)

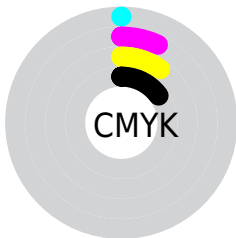
Blue (76%)



Red (85%)

Yellow (79%)

Blue (76%)

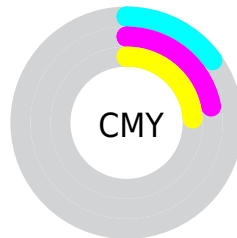


Cyan (0%)

Magenta (7%)

Yellow (10%)

Black (15%)



Cyan (15%)

Magenta (22%)

Yellow (24%)

Brightness & Saturation Gradients

These gradients show how the Hex color D8C8C3 changes by changing the brightness by 10 percent. The first figure shows a shift by +10% for each color and the second figure -10%.

Similar to the brightness gradients but the following saturation gradients show a change of the Hex color D8C8C3 by changing the saturation by 10% instead.

 D8C8C3

FFFFFFF

FFFFFFC

 D8C8C3

 BCADA8

 A1928D

 877874

 6D605B

 554844

 3E322E

 281D19

 130200

 000000

 D8C8C3

 D8C8C3

 D8B8AD

 D8D8D9

 D8A798

 D8E9EE

 D89782

 D8F9FF

 D8866D

 D8FFFF

 D87657

 D86541

 D8552C

 D84416

 D83401

Harmonies

Analogous

The Analogous color harmony consists of three colors that are next to each other on the color wheel.



D9C7C9



D8C8C3



D4CAC0

Triad

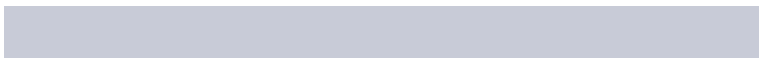
The Triadic color harmony groups three colors that are evenly spaced from another and form a triangle on the color wheel.



D8C8C3



C0CFC8



C8CBD7

Complementary

The Complementary color scheme is a pair of colors which are on the opposite of each other on the color wheel.



D8C8C3



C3D3D8

Split Complementary

Split-complementary colors differ from the complementary color scheme. The scheme consists of three colors, the original color and two neighbors of the complement color.



C2CDD7



D8C8C3



BDCFCE

Square

The Square scheme is like the rectangle color scheme, but the four colors are evenly spaced on the color wheel.



D8C8C3



C6CDC2



BDCED3



D0C9D4

Rectangle

The Rectangle color scheme consists of four colors that form a rectangle on the color wheel.



D8C8C3



D0CBBF



BDCED3



C6CBD7

Sweetspot

The Sweet Spot groups the original color and five complimentary colors.



D8C8C3



FFF9F7



D8C3D3



807C7A



000000



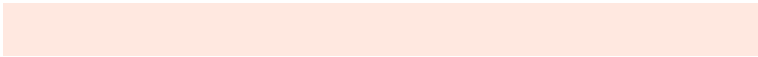
808080

Same Dimension

The Same Dimension uses a secret algorithm to generate beautiful new colors.



D8C8C3



FFE8E0



D8D2C3



6B6360



AB2900



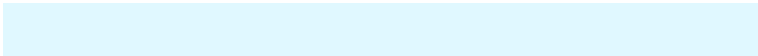
2B0A00

Inverse Universe

The Inverse Universe completely reimagines the original color for something new.



C3D3D8



E0F8FF



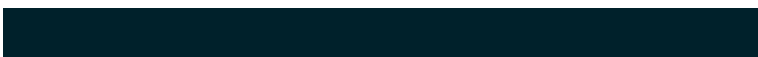
C3C9D8



60696B



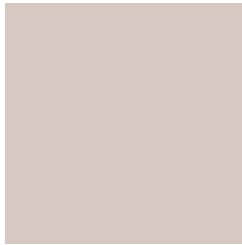
0082AB



00212B

Previews

White Background



This preview shows how the Hex color D8C8C3 looks on a white background.

Color Contrast Check

Large Text (above 18pt) WCAG AA × Fail

Any Text WCAG AA × Fail

Large Text (above 18pt) WCAG AAA × Fail

Any Text WCAG AAA × Fail

Black Background



This preview shows how the Hex color D8C8C3 looks on a black background.

Color Contrast Check

Large Text (above 18pt) WCAG AA ✓ Pass

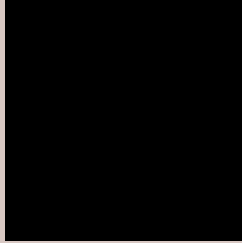
Any Text WCAG AA ✓ Pass

Large Text (above 18pt) WCAG AAA ✓ Pass

Any Text WCAG AAA ✓ Pass

If you want to check with other color combinations, try the [Color Contrast Checker](#).

Hex D8C8C3 Background



This preview shows how black text looks on a background with the Hex color D8C8C3.



This preview shows how white text looks on a background with the Hex color D8C8C3.

Color Blindness Simulation

Color vision deficiency is a very complex topic, and I could not describe the different causes any better than Wikipedia does, so if you want to learn more, you should check out their [article about color blindness](#).

Dichromacy



Original Color
D8C8C3

Protanopia
D0CAC4

Deuteranopia
E2C4C4

Trichromacy



Original Color
D8C8C3

Protanomaly
D3C9C4

Deuteranomaly
DEC5C4

Tritanomaly
D9C6CE

Monochromacy



Original Color
D8C8C3

Achromatopsia
CCCCCC

Achromatomaly
D0CBC9

CSS Examples

Text

The CSS property to change the color of the text to Hex D8C8C3 is called "color". The color property can be set on classes, ids or directly on the HTML element.

This example shows how text in the color #D8C8C3 looks like.

```
.text, #text, p{  
    color:#D8C8C3  
}
```

If you want to add a text shadow in that color use the text-shadow property, you can generate a text shadow directly with our [CSS Text Shadow Generator](#).

Here you see how black text with a 4 pixel #D8C8C3 colored shadow looks like.

```
.shadow{ text-shadow: 4px 4px 2px #D8C8C3  
}
```

Border

The CSS property to change the border of an element to Hex D8C8C3 is called "border". The border property can be set on classes, ids or directly on the HTML element.

This example shows the color as border, it can be applied via the CSS property "border" or "border-color".

```
.border, #border, table{ border:4px solid  
#D8C8C3 }
```

If only the border color should be changed use the property `border-color`.

```
.border{ border-color:#D8C8C3 }
```

If you want to add a box shadow in that color use:

Here you see how a box with a 4 pixel #D8C8C3 colored shadow looks like.

```
.boxshadow{ -moz-box-shadow:4px 4px 4px  
4px #D8C8C3; -webkit-box-shadow:4px 4px  
4px 4px #D8C8C3; box-shadow:4px 4px 4px  
4px #D8C8C3 }
```

Background

The CSS property to change the background color of an element to Hex D8C8C3 is called "background". The background property can be set on classes, ids or directly on the HTML element.

```
.background, #background, body{  
background:#D8C8C3 }
```

If only the background color should be changed can be used:

```
.background{ background-color:#D8C8C3 }
```

This example shows the color as background, it is applied via the CSS property "background".

To optimize and compress your CSS code, you can use our [online CSS compressor and optimizer](#) based on csstidy. If you want to create a linear or radial gradient as background or border, check our [CSS Gradient Generator](#).

Hey! You found this booklet interesting? Support Converting Colors with the new Membership Option!

The pro membership hides all ads, plus gives you double the colors in the color bucket, and more awesome pro features!

[Learn more, Memberships starting at \\$2.50/m!](#)

**Follow me
on Twitter!**

@ConvertingColor