

# Converting Colors

Hex(D97468)

Have a look what the booklet for  
Hex(D97468) contains.

<b>Hex(D97468)</b> .....	3
<i><b>Conversions</b></i> .....	4
<i><b>Details</b></i> .....	6
<i><b>Harmonies</b></i> .....	11
<i><b>Previews</b></i> .....	23
<i><b>Color Blindness Simulation</b></i> .....	26
<i><b>CSS Examples</b></i> .....	29

# Color

**Hex(D97468)**

# Conversions

## Conversions Part 1

<b>Format</b>	<b>Color</b>
Hex	D97468
RGB	217, 116, 104
RGB Percent	85%, 45%, 41%
CMY	0.1490, 0.5451, 0.5922
CMYK	0.00, 0.47, 0.52, 0.15
HSL	6°, 60%, 63%
HSV	6°, 52%, 85%
XYZ	37.3594, 28.2420, 16.5789
YIQ	144.8310, 64.0480, 17.6800

# Conversions

## Conversions Part 2

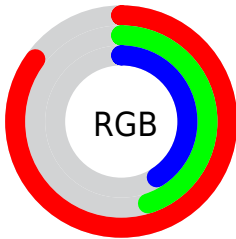
<b>Format</b>	<b>Color</b>
R <sub>Y</sub> B	217, 117, 104
Decimal	14251112
CIE Lab	60.11, 38.21, 24.42
CIE LCh	60, 45.351, 32.580
Yxy	28.2420, 0.4546, 0.3437
Android (android.graphics.Color)	4292441192 (0xFFD97468)
YUV	144.8310, -20.1297, 63.2922
Hunter-Lab	53.1432, 32.4839, 18.7037

# Details

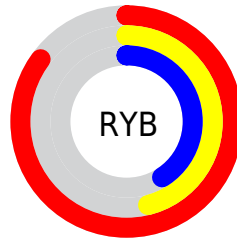
The Hex color **D97468** is a dark color, and the websafe version is hex **CC6666**. A complement of this color would be **68CDD9**, and the grayscale version is **919191**.

A 20% lighter version of the original color is **FFAA9B**, and **9E4139** is the 20% darker color. If you saturate the color by 10%, you get **D96152**, and if you desaturate by 10%, it is **D9877E**.

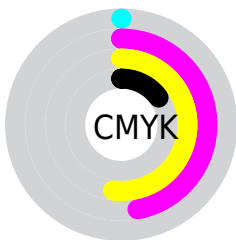
# Distribution



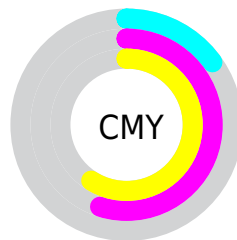
- Red (85%)
- Green (45%)
- Blue (41%)



- Red (85%)
- Yellow (46%)
- Blue (41%)



- Cyan (0%)
- Magenta (47%)
- Yellow (52%)
- Black (15%)



- Cyan (15%)
- Magenta (55%)
- Yellow (59%)

# Brightness & Saturation Gradients

These gradients show how the Hex color D97468 changes by changing the brightness by 10 percent. The first figure shows a shift by +10% for each color and the second figure -10%.

Similar to the brightness gradients but the following saturation gradients show a change of the Hex color D97468 by changing the saturation by 10% instead.



 D97468

 D97468

FFFFFF

 BB5A50

 FFAA9B

 9E4139

 FFC5B6

 812723

 FFE2D2

 650B0E

 FFFFEE

 490000

 310002

 000000

 D97468

 D97468

 D96152

 D9877E

 D94D3D

 D99B93

 D93A27

 D9AEA9

 D92611

 D9C2BF

 D91700

 D9D5D5

 D9E8EA

 D9FCFF

 D9FFFF

# Harmonies

## Analogous

The Analogous color harmony consists of three colors that are next to each other on the color wheel.



DA6F8F



D97468



C6814A

# Triad

The Triadic color harmony groups three colors that are evenly spaced from another and form a triangle on the color wheel.



D97468



46A26B



4F94E0

# Complementary

The Complementary color scheme is a pair of colors which are on the opposite of each other on the color wheel.



D97468



68CDD9

# Split Complementary

Split-complementary colors differ from the complementary color scheme. The scheme consists of three colors, the original color and two neighbors of the complement color.



009FD7



D97468



00A593

# Square

The Square scheme is like the rectangle color scheme, but the four colors are evenly spaced on the color wheel.



D97468



7C9B4B



00A4BB



9885D4

# Rectangle

The Rectangle color scheme consists of four colors that form a rectangle on the color wheel.



D97468



B18B3F



00A4BB



2598E0

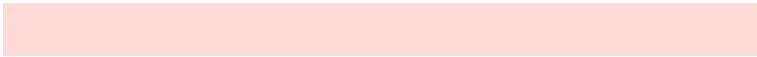


# Sweetspot

The Sweet Spot groups the original color and five complimentary colors.



D97468



FFDBD6



D968CE



806A67



000000



808080



# Same Dimension

The Same Dimension uses a secret algorithm to generate beautiful new colors.



D97468



FF7261



D9AC68



6E6463



AD1200



2E0500



# Inverse Universe

The Inverse Universe completely reimagines the original color for something new.



68CDD9



61EEFF



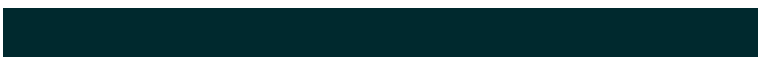
6895D9



636C6E



009BAD



00292E



# Previews

## White Background



This preview shows how the Hex color D97468 looks on a white background.

## Color Contrast Check

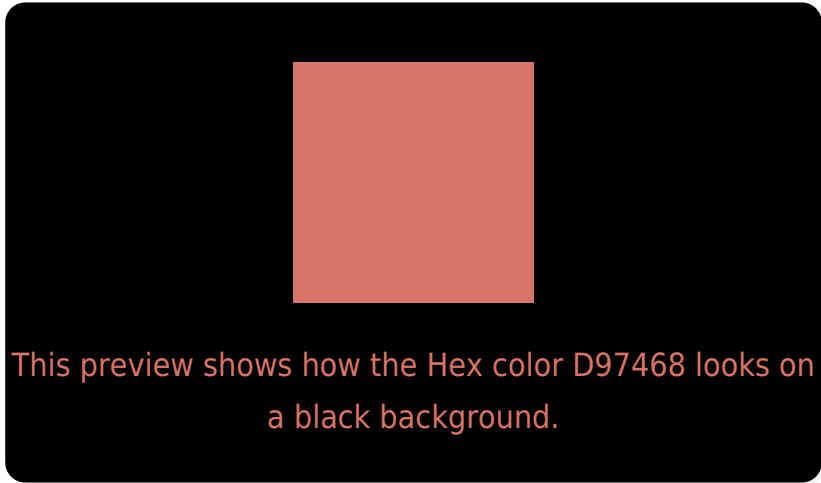
Large Text (above 18pt) WCAG AA ✓ Pass

Any Text WCAG AA × Fail

Large Text (above 18pt) WCAG AAA × Fail

Any Text WCAG AAA × Fail

# Black Background



## Color Contrast Check

Large Text (above 18pt) WCAG AA ✓ Pass

Any Text WCAG AA ✓ Pass

Large Text (above 18pt) WCAG AAA ✓ Pass

Any Text WCAG AAA × Fail

If you want to check with other color combinations, try the [Color Contrast Checker](#).



## Hex D97468 Background



This preview shows how black text looks on a background with the Hex color D97468.



This preview shows how white text looks on a background with the Hex color D97468.

# Color Blindness Simulation

Color vision deficiency is a very complex topic, and I could not describe the different causes any better than Wikipedia does, so if you want to learn more, you should check out their [article about color blindness](#).

## Dichromacy



**Original Color**  
D97468

**Protanopia**  
9A9175

**Deuteranopia**  
AE8B64

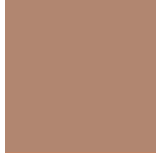


**Tritanopia**  
DA717A

# Trichromacy



**Original Color**  
D97468



**Protanomaly**  
B18670



**Deuteranomaly**  
BE8365

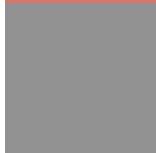


**Tritanomaly**  
DA7273

# Monochromacy



**Original Color**  
D97468



**Achromatopsia**  
919191



**Achromatomaly**  
AB8682

# CSS Examples

## Text

The CSS property to change the color of the text to Hex D97468 is called "color". The color property can be set on classes, ids or directly on the HTML element.

This example shows how text in the color #D97468 looks like.

```
.text, #text, p{  
    color:#D97468  
}
```

If you want to add a text shadow in that color use the text-shadow property, you can generate a text shadow directly with our [CSS Text Shadow Generator](#).

Here you see how black text with a 4 pixel #D97468 colored shadow looks like.

```
.shadow{ text-shadow: 4px 4px 2px #D97468
}
```

## Border

The CSS property to change the border of an element to Hex D97468 is called "border". The border property can be set on classes, ids or directly on the HTML element.

This example shows the color as border, it can be applied via the CSS property "border" or "border-color".

```
.border, #border, table{ border:4px solid
#D97468 }
```

If only the border color should be changed use the property `border-color`.

```
.border{ border-color:#D97468 }
```

If you want to add a box shadow in that color use:

Here you see how a box with a 4 pixel #D97468 colored shadow looks like.

```
.boxshadow{ -moz-box-shadow:4px 4px 4px  
4px #D97468; -webkit-box-shadow:4px 4px  
4px 4px #D97468; box-shadow:4px 4px 4px  
4px #D97468 }
```

# Background

The CSS property to change the background color of an element to Hex D97468 is called "background". The background property can be set on classes, ids or directly on the HTML element.

```
.background, #background, body{  
background:#D97468 }
```

If only the background color should be changed can be used:

```
.background{ background-color:#D97468 }
```

This example shows the color as background, it is applied via the CSS property "background".

To optimize and compress your CSS code, you can use our [online CSS compressor and optimizer](#) based on csstidy. If you want to create a linear or radial gradient as background or border, check our [CSS Gradient Generator](#).



Hey! You found this booklet interesting? Support Converting Colors with the new Membership Option!

The pro membership hides all ads, plus gives you double the colors in the color bucket, and more awesome pro features!

**[Learn more, Memberships starting at \\$2.50/m!](#)**

**Follow me  
on Twitter!**

@ConvertingColor