

Converting Colors

Hex(D975D7)

Have a look what the booklet for
Hex(D975D7) contains.

Hex(D975D7)	3
<i>Conversions</i>	4
<i>Details</i>	6
<i>Harmonies</i>	11
<i>Previews</i>	23
<i>Color Blindness Simulation</i>	26
<i>CSS Examples</i>	29

Color

Hex(D975D7)

Conversions

Conversions Part 1

Format	Color
Hex	D975D7
RGB	217, 117, 215
RGB Percent	85%, 46%, 84%
CMY	0.1490, 0.5412, 0.1569
CMYK	0.00, 0.46, 0.01, 0.15
HSL	301°, 57%, 65%
HSV	301°, 46%, 85%
XYZ	47.2423, 32.3806, 68.0501
YIQ	158.0720, 28.1420, 51.6780

Conversions

Conversions Part 2

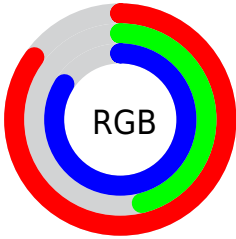
Format	Color
RYB	217, 117, 215
Decimal	14251479
CIELab	63.66, 52.72, -33.66
CIELCh	64, 62.548, 327.445
Yxy	32.3806, 0.3199, 0.2193
Android (android.graphics.Color)	4292441559 (0xFFD975D7)
YUV	158.0720, 28.0655, 51.6799
Hunter-Lab	56.9039, 48.6108, -31.0708

Details

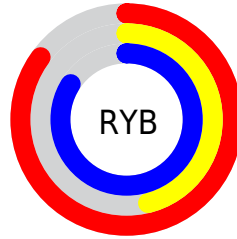
The Hex color **D975D7** is a light color, and the websafe version is hex **CC66CC**. A complement of this color would be **75D977**, and the grayscale version is **9E9E9E**.

A 20% lighter version of the original color is **FFACFF**, and **A03FA0** is the 20% darker color. If you saturate the color by 10%, you get **D95FD7**, and if you desaturate by 10%, it is **D98BD7**.

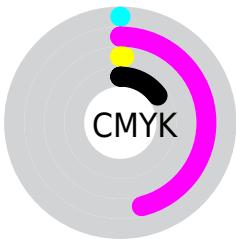
Distribution



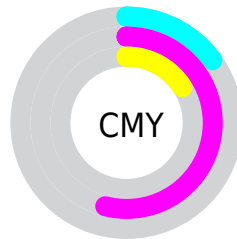
- Red (85%)
- Green (46%)
- Blue (84%)



- Red (85%)
- Yellow (46%)
- Blue (84%)



- Cyan (0%)
- Magenta (46%)
- Yellow (1%)
- Black (15%)



- Cyan (15%)
- Magenta (54%)
- Yellow (16%)

Brightness & Saturation Gradients

These gradients show how the Hex color D975D7 changes by changing the brightness by 10 percent. The first figure shows a shift by +10% for each color and the second figure -10%.

Similar to the brightness gradients but the following saturation gradients show a change of the Hex color D975D7 by changing the saturation by 10% instead.

 D975D7

 D975D7

FFFFFF

 BC5ABB

 FFACFF

 A03FA0

 FFC8FF

 842385

 FFE5FF

 69006C

 4F0053

 36003C

 1C0025

 00010D

 000000

 D975D7

 D975D7

 D95FD7

 D98BD7

 D94AD6

 D9A0D8

 D934D6

 D9B6D8

 D91ED5

 D9CCD9

 D909D5

 D9E2D9

 D900D5

 D9F7DA

 D9FFDA

 D9FFDB

Harmonies

Analogous

The Analogous color harmony consists of three colors that are next to each other on the color wheel.



928DFE



D975D7



FB65A1

Triad

The Triadic color harmony groups three colors that are evenly spaced from another and form a triangle on the color wheel.



D975D7



BB961C



00B4CC

Complementary

The Complementary color scheme is a pair of colors which are on the opposite of each other on the color wheel.



D975D7



75D977

Split Complementary

Split-complementary colors differ from the complementary color scheme. The scheme consists of three colors, the original color and two neighbors of the complement color.



00B493



D975D7



84A62D

Square

The Square scheme is like the rectangle color scheme, but the four colors are evenly spaced on the color wheel.



D975D7



E5803B



32B05B



00AFF7

Rectangle

The Rectangle color scheme consists of four colors that form a rectangle on the color wheel.



D975D7



FF677C



32B05B



00B5BA

Sweetspot

The Sweet Spot groups the original color and five complimentary colors.



D975D7



FFDBFE



7775D9



806A7F



000000



808080

Same Dimension

The Same Dimension uses a secret algorithm to generate beautiful new colors.



D975D7



FF73FC



D975A5



6E636D



AD00AA



2E002D

Inverse Universe

The Inverse Universe completely reimagines the original color for something new.



D975D7



FF73FC



75D9A9



6E636D



AD00AA



2E002D

Previews

White Background



This preview shows how the Hex color D975D7 looks on a white background.

Color Contrast Check

Large Text (above 18pt) WCAG AA × Fail

Any Text WCAG AA × Fail

Large Text (above 18pt) WCAG AAA × Fail

Any Text WCAG AAA × Fail

Black Background



Color Contrast Check

Large Text (above 18pt) WCAG AA ✓ Pass

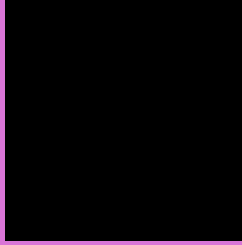
Any Text WCAG AA ✓ Pass

Large Text (above 18pt) WCAG AAA ✓ Pass

Any Text WCAG AAA ✓ Pass

If you want to check with other color combinations, try the [Color Contrast Checker](#).

Hex D975D7 Background



This preview shows how black text looks on a background with the Hex color D975D7.




This preview shows how white text looks on a background with the Hex color D975D7.

Color Blindness Simulation

Color vision deficiency is a very complex topic, and I could not describe the different causes any better than Wikipedia does, so if you want to learn more, you should check out their [article about color blindness](#).

Dichromacy





Tritanopia
D0858F

Trichromacy



Original Color
D975D7



Protanomaly
9B8BE9



Deuteranomaly
A78BD3

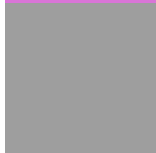


Tritanomaly
D37FA9

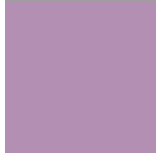
Monochromacy



Original Color
D975D7



Achromatopsia
9E9E9E



Achromatomaly
B38FB3

CSS Examples

Text

The CSS property to change the color of the text to Hex D975D7 is called "color". The color property can be set on classes, ids or directly on the HTML element.

This example shows how text in the color #D975D7 looks like.

```
.text, #text, p{  
    color:#D975D7  
}
```

If you want to add a text shadow in that color use the text-shadow property, you can generate a text shadow directly with our [CSS Text Shadow Generator](#).

Here you see how black text with a 4 pixel #D975D7 colored shadow looks like.

```
.shadow{ text-shadow: 4px 4px 2px #D975D7
}
```

Border

The CSS property to change the border of an element to Hex D975D7 is called "border". The border property can be set on classes, ids or directly on the HTML element.

This example shows the color as border, it can be applied via the CSS property "border" or "border-color".

```
.border, #border, table{ border:4px solid
#D975D7 }
```

If only the border color should be changed use the property `border-color`.

```
.border{ border-color:#D975D7 }
```

If you want to add a box shadow in that color use:

Here you see how a box with a 4 pixel #D975D7 colored shadow looks like.

```
.boxshadow{ -moz-box-shadow:4px 4px 4px  
4px #D975D7; -webkit-box-shadow:4px 4px  
4px 4px #D975D7; box-shadow:4px 4px 4px  
4px #D975D7 }
```

Background

The CSS property to change the background color of an element to Hex D975D7 is called "background". The background property can be set on classes, ids or directly on the HTML element.

```
.background, #background, body{  
background:#D975D7 }
```

If only the background color should be changed can be used:

```
.background{ background-color:#D975D7 }
```

This example shows the color as background, it is applied via the CSS property "background".

To optimize and compress your CSS code, you can use our [online CSS compressor and optimizer](#) based on csstidy. If you want to create a linear or radial gradient as background or border, check our [CSS Gradient Generator](#).

Hey! You found this booklet interesting? Support Converting Colors with the new Membership Option!

The pro membership hides all ads, plus gives you double the colors in the color bucket, and more awesome pro features!

[Learn more, Memberships starting at \\$2.50/m!](#)

**Follow me
on Twitter!**

@ConvertingColor