

Converting Colors

Hex(D98999)

Have a look what the booklet for
Hex(D98999) contains.

Hex(D98999)	3
<i>Conversions</i>	4
<i>Details</i>	6
<i>Harmonies</i>	11
<i>Previews</i>	23
<i>Color Blindness Simulation</i>	26
<i>CSS Examples</i>	29

Color

Hex(D98999)

Conversions

Conversions Part 1

Format	Color
Hex	D98999
RGB	217, 137, 153
RGB Percent	85%, 54%, 60%
CMY	0.1490, 0.4627, 0.4000
CMYK	0.00, 0.37, 0.29, 0.15
HSL	348°, 51%, 69%
HSV	348°, 37%, 85%
XYZ	43.3107, 34.9429, 34.5989
YIQ	162.7440, 42.5440, 21.9360

Conversions

Conversions Part 2

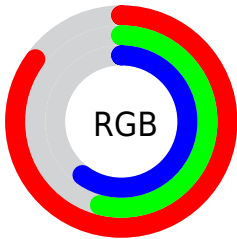
Format	Color
RYB	217, 137, 153
Decimal	14256537
CIELab	65.70, 32.59, 4.39
CIELCh	66, 32.880, 7.674
Yxy	34.9429, 0.3838, 0.3096
Android (android.graphics.Color)	4292446617 (0xFFD98999)
YUV	162.7440, -4.8038, 47.5825
Hunter-Lab	59.1126, 27.3368, 6.6760

Details

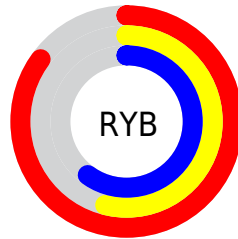
The Hex color **D98999** is a light color, and the websafe version is hex **CC9999**. A complement of this color would be **89D9C9**, and the grayscale version is **A3A3A3**.

A 20% lighter version of the original color is **FFBFCF**, and **A05666** is the 20% darker color. If you saturate the color by 10%, you get **D97388**, and if you desaturate by 10%, it is **D99FAA**.

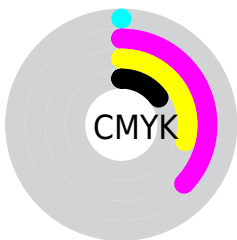
Distribution



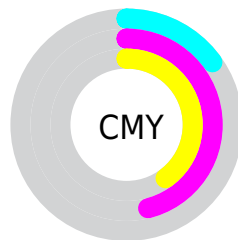
- Red (85%)
- Green (54%)
- Blue (60%)



- Red (85%)
- Yellow (54%)
- Blue (60%)



- Cyan (0%)
- Magenta (37%)
- Yellow (29%)
- Black (15%)



- Cyan (15%)
- Magenta (46%)
- Yellow (40%)

Brightness & Saturation Gradients

These gradients show how the Hex color D98999 changes by changing the brightness by 10 percent. The first figure shows a shift by +10% for each color and the second figure -10%.

Similar to the brightness gradients but the following saturation gradients show a change of the Hex color D98999 by changing the saturation by 10% instead.

 D98999

 D98999

FFFFFF

 BC6F7F

 FFBFCE

 A05666

 FFDBEB

 853D4E

 FFF8FF

 6A2537

 500B22

 37000C

 1B0001

 000000

 D98999

 D98999

 D97388

 D99FAA

 D95E76

 D9B4BC

 D94865

 D9CACD

 D93254

 D9E0DE

 D91C42

 D9F6F0

 D90731

 D9FFFF

 D9002B

Harmonies

Analogous

The Analogous color harmony consists of three colors that are next to each other on the color wheel.



CB8CB7



D98999



D78D7D

Triad

The Triadic color harmony groups three colors that are evenly spaced from another and form a triangle on the color wheel.



D98999



8CA970



54A9D5

Complementary

The Complementary color scheme is a pair of colors which are on the opposite of each other on the color wheel.



D98999



89D9C9

Split Complementary

Split-complementary colors differ from the complementary color scheme. The scheme consists of three colors, the original color and two neighbors of the complement color.



34AEC3



D98999



69AE88

Square

The Square scheme is like the rectangle color scheme, but the four colors are evenly spaced on the color wheel.



D98999



ACA065



45B0A6



83A0DA

Rectangle

The Rectangle color scheme consists of four colors that form a rectangle on the color wheel.



D98999



CD936F



45B0A6



45ABD1

Sweetspot

The Sweet Spot groups the original color and five complimentary colors.



D98999



FFE3E9



C989D9



806F72



000000



808080

Same Dimension

The Same Dimension uses a secret algorithm to generate beautiful new colors.



D98999



FF8FA5



D9A189



6E6365



AD0023



2E0009

Inverse Universe

The Inverse Universe completely reimagines the original color for something new.



D98999



FF8FA5



89C1D9



6E6365



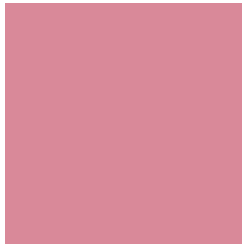
AD0023



2E0009

Previews

White Background



This preview shows how the Hex color D98999 looks on a white background.

Color Contrast Check

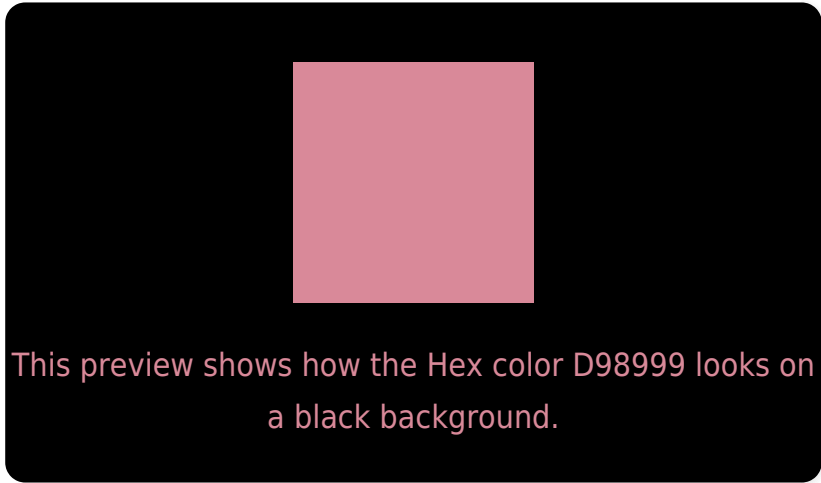
Large Text (above 18pt) WCAG AA × Fail

Any Text WCAG AA × Fail

Large Text (above 18pt) WCAG AAA × Fail

Any Text WCAG AAA × Fail

Black Background



Color Contrast Check

Large Text (above 18pt) WCAG AA ✓ Pass

Any Text WCAG AA ✓ Pass

Large Text (above 18pt) WCAG AAA ✓ Pass

Any Text WCAG AAA ✓ Pass

If you want to check with other color combinations, try the [Color Contrast Checker](#).

Hex D98999 Background



This preview shows how black text looks on a background with the Hex color D98999.

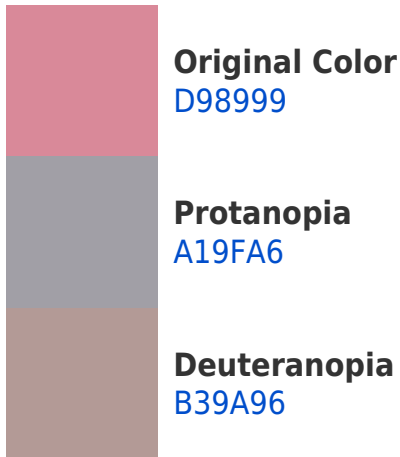


This preview shows how white text looks on a background with the Hex color D98999.

Color Blindness Simulation

Color vision deficiency is a very complex topic, and I could not describe the different causes any better than Wikipedia does, so if you want to learn more, you should check out their [article about color blindness](#).

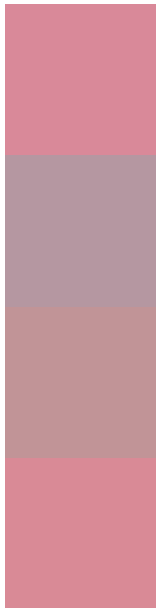
Dichromacy





Tritanopia
D98A94

Trichromacy



Original Color
D98999

Protanomaly
B597A1

Deuteranomaly
C19497

Tritanomaly
D98A96

Monochromacy



Original Color
D98999

Achromatopsia
A3A3A3

Achromatomaly
B79A9F

CSS Examples

Text

The CSS property to change the color of the text to Hex D98999 is called "color". The color property can be set on classes, ids or directly on the HTML element.

This example shows how text in the color #D98999 looks like.

```
.text, #text, p{  
    color:#D98999  
}
```

If you want to add a text shadow in that color use the text-shadow property, you can generate a text shadow directly with our [CSS Text Shadow Generator](#).

Here you see how black text with a 4 pixel #D98999 colored shadow looks like.

```
.shadow{ text-shadow: 4px 4px 2px #D98999
}
```

Border

The CSS property to change the border of an element to Hex D98999 is called "border". The border property can be set on classes, ids or directly on the HTML element.

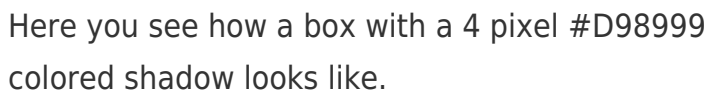
This example shows the color as border, it can be applied via the CSS property "border" or "border-color".

```
.border, #border, table{ border:4px solid
#D98999 }
```

If only the border color should be changed use the property `border-color`.

```
.border{ border-color:#D98999 }
```

If you want to add a box shadow in that color use:



Here you see how a box with a 4 pixel `#D98999` colored shadow looks like.

```
.boxshadow{ -moz-box-shadow:4px 4px 4px  
4px #D98999; -webkit-box-shadow:4px 4px  
4px 4px #D98999; box-shadow:4px 4px 4px  
4px #D98999 }
```

Background

The CSS property to change the background color of an element to Hex D98999 is called "background". The background property can be set on classes, ids or directly on the HTML element.

```
.background, #background, body{  
background:#D98999 }
```

If only the background color should be changed can be used:

```
.background{ background-color:#D98999 }
```

This example shows the color as background, it is applied via the CSS property "background".

To optimize and compress your CSS code, you can use our [online CSS compressor and optimizer](#) based on csstidy. If you want to create a linear or radial gradient as background or border, check our [CSS Gradient Generator](#).

Hey! You found this booklet interesting? Support Converting Colors with the new Membership Option!

The pro membership hides all ads, plus gives you double the colors in the color bucket, and more awesome pro features!

[Learn more, Memberships starting at \\$2.50/m!](#)

**Follow me
on Twitter!**

@ConvertingColor