

Converting Colors

Hex(D99E92)

Have a look what the booklet for
Hex(D99E92) contains.

Hex(D99E92)	3
<i>Conversions</i>	4
<i>Details</i>	6
<i>Harmonies</i>	11
<i>Previews</i>	23
<i>Color Blindness Simulation</i>	26
<i>CSS Examples</i>	29

Color

Hex(D99E92)

Conversions

Conversions Part 1

Format	Color
Hex	D99E92
RGB	217, 158, 146
RGB Percent	85%, 62%, 57%
CMY	0.1490, 0.3804, 0.4275
CMYK	0.00, 0.27, 0.33, 0.15
HSL	10°, 48%, 71%
HSV	10°, 33%, 85%
XYZ	46.0304, 41.2808, 32.7360
YIQ	174.2730, 39.0160, 8.7760

Conversions

Conversions Part 2

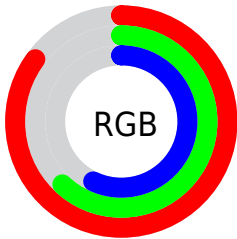
Format	Color
R_{YB}	217, 160, 146
Decimal	14261906
CIE _{Lab}	70.37, 20.36, 14.93
CIE _{LCh}	70, 25.247, 36.265
Yxy	41.2808, 0.3834, 0.3439
Android (android.graphics.Color)	4292451986 (0xFFD99E92)
YUV	174.2730, -13.9386, 37.4716
Hunter-Lab	64.2501, 15.4443, 14.7662

Details

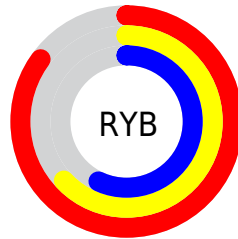
The Hex color **D99E92** is a light color, and the websafe version is hex **CC9999**. A complement of this color would be **92CDD9**, and the grayscale version is **AEAEAE**.

A 20% lighter version of the original color is **FFD5C8**, and **A16A5F** is the 20% darker color. If you saturate the color by 10%, you get **D98C7C**, and if you desaturate by 10%, it is **D9B0A8**.

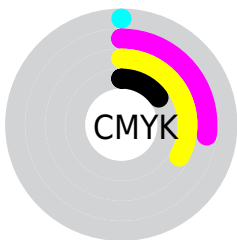
Distribution



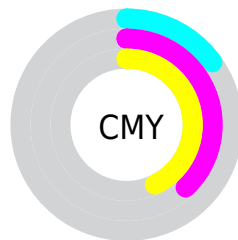
- Red (85%)
- Green (62%)
- Blue (57%)



- Red (85%)
- Yellow (63%)
- Blue (57%)



- Cyan (0%)
- Magenta (27%)
- Yellow (33%)
- Black (15%)



- Cyan (15%)
- Magenta (38%)
- Yellow (43%)

Brightness & Saturation Gradients

These gradients show how the Hex color D99E92 changes by changing the brightness by 10 percent. The first figure shows a shift by +10% for each color and the second figure -10%.

Similar to the brightness gradients but the following saturation gradients show a change of the Hex color D99E92 by changing the saturation by 10% instead.

 D99E92

 D99E92

FFFFFF

 BC8478

 FFD5C8

 A16A5F

 FFF1E4

 855248

 6B3A31

 51241C

 390E03

 230001

 000000

 D99E92

 D99E92

 D98C7C

 D9B0A8

 D97A67

 D9C2BD

 D96851

 D9D4D3

 D9563B

 D9E6E9

 D94425

 D9F8FE

 D93210

 D9FFFF

 D92500

Harmonies

Analogous

The Analogous color harmony consists of three colors that are next to each other on the color wheel.



DA9BA8



D99E92



CDA483

Triad

The Triadic color harmony groups three colors that are evenly spaced from another and form a triangle on the color wheel.



D99E92



85B799



97ADD9

Complementary

The Complementary color scheme is a pair of colors which are on the opposite of each other on the color wheel.



D99E92



92CDD9

Split Complementary

Split-complementary colors differ from the complementary color scheme. The scheme consists of three colors, the original color and two neighbors of the complement color.



79B3D5



D99E92



6FB9B0

Square

The Square scheme is like the rectangle color scheme, but the four colors are evenly spaced on the color wheel.



D99E92



9FB387



69B8C6



B6A5D1

Rectangle

The Rectangle color scheme consists of four colors that form a rectangle on the color wheel.



D99E92



C0AA7E



69B8C6



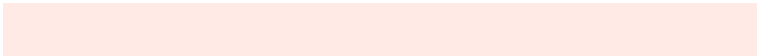
8CAFD9

Sweetspot

The Sweet Spot groups the original color and five complimentary colors.



D99E92



FFEAE6



D992CD



807370



000000



808080

Same Dimension

The Same Dimension uses a secret algorithm to generate beautiful new colors.



D99E92



FFAC9C



D9C192



6E6563



AD1D00



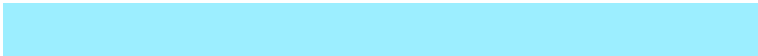
2E0800

Inverse Universe

The Inverse Universe completely reimagines the original color for something new.



92CDD9



9CEEFF



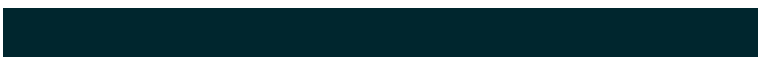
92AAD9



636C6E



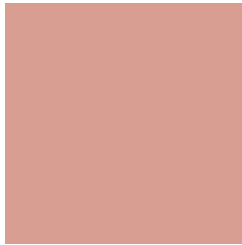
0090AD



00262E

Previews

White Background



This preview shows how the Hex color D99E92 looks on a white background.

Color Contrast Check

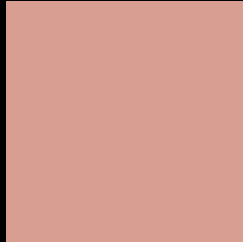
Large Text (above 18pt) WCAG AA × Fail

Any Text WCAG AA × Fail

Large Text (above 18pt) WCAG AAA × Fail

Any Text WCAG AAA × Fail

Black Background



This preview shows how the Hex color D99E92 looks on a black background.

Color Contrast Check

Large Text (above 18pt) WCAG AA ✓ Pass

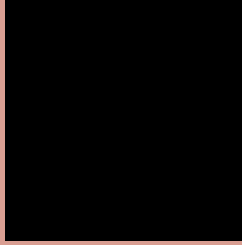
Any Text WCAG AA ✓ Pass

Large Text (above 18pt) WCAG AAA ✓ Pass

Any Text WCAG AAA ✓ Pass

If you want to check with other color combinations, try the [Color Contrast Checker](#).

Hex D99E92 Background



This preview shows how black text looks on a background with the Hex color D99E92.

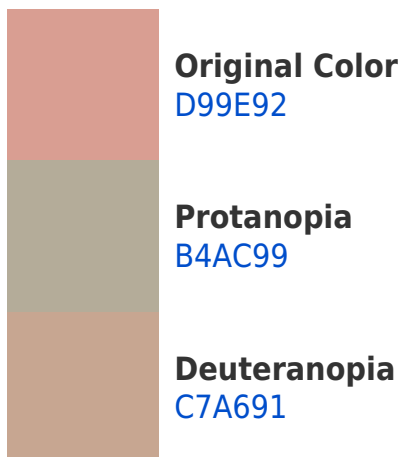


This preview shows how white text looks on a background with the Hex color D99E92.

Color Blindness Simulation

Color vision deficiency is a very complex topic, and I could not describe the different causes any better than Wikipedia does, so if you want to learn more, you should check out their [article about color blindness](#).

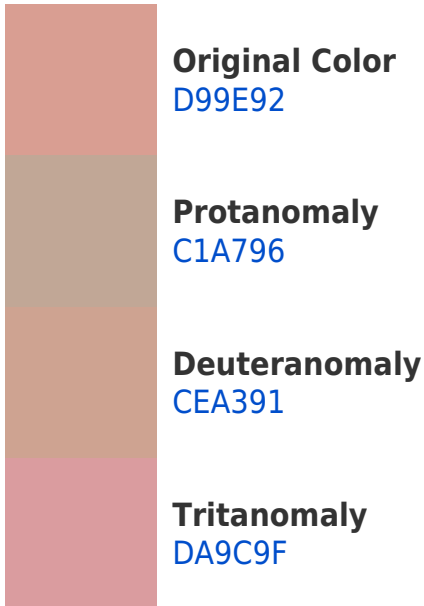
Dichromacy





Tritanopia
DB9BA7

Trichromacy



Monochromacy



CSS Examples

Text

The CSS property to change the color of the text to Hex D99E92 is called "color". The color property can be set on classes, ids or directly on the HTML element.

This example shows how text in the color #D99E92 looks like.

```
.text, #text, p{  
    color:#D99E92  
}
```

If you want to add a text shadow in that color use the text-shadow property, you can generate a text shadow directly with our [CSS Text Shadow Generator](#).

Here you see how black text with a 4 pixel #D99E92 colored shadow looks like.

```
.shadow{ text-shadow: 4px 4px 2px #D99E92
}
```

Border

The CSS property to change the border of an element to Hex D99E92 is called "border". The border property can be set on classes, ids or directly on the HTML element.

This example shows the color as border, it can be applied via the CSS property "border" or "border-color".

```
.border, #border, table{ border:4px solid
#D99E92 }
```

If only the border color should be changed use the property `border-color`.

```
.border{ border-color:#D99E92 }
```

If you want to add a box shadow in that color use:

Here you see how a box with a 4 pixel #D99E92 colored shadow looks like.

```
.boxshadow{ -moz-box-shadow:4px 4px 4px  
4px #D99E92; -webkit-box-shadow:4px 4px  
4px 4px #D99E92; box-shadow:4px 4px 4px  
4px #D99E92 }
```

Background

The CSS property to change the background color of an element to Hex D99E92 is called "background". The background property can be set on classes, ids or directly on the HTML element.

```
.background, #background, body{  
background:#D99E92 }
```

If only the background color should be changed can be used:

```
.background{ background-color:#D99E92 }
```

This example shows the color as background, it is applied via the CSS property "background".

To optimize and compress your CSS code, you can use our [online CSS compressor and optimizer](#) based on csstidy. If you want to create a linear or radial gradient as background or border, check our [CSS Gradient Generator](#).

Hey! You found this booklet interesting? Support Converting Colors with the new Membership Option!

The pro membership hides all ads, plus gives you double the colors in the color bucket, and more awesome pro features!

[Learn more, Memberships starting at \\$2.50/m!](#)

**Follow me
on Twitter!**

@ConvertingColor