

# Converting Colors

Hex(D9A78C)

Have a look what the booklet for  
Hex(D9A78C) contains.

<b>Hex(D9A78C)</b> .....	3
<b><i>Conversions</i></b> .....	4
<b><i>Details</i></b> .....	6
<b><i>Harmonies</i></b> .....	11
<b><i>Previews</i></b> .....	23
<b><i>Color Blindness Simulation</i></b> .....	26
<b><i>CSS Examples</i></b> .....	29

# **Color**

**Hex(D9A78C)**

# Conversions

## Conversions Part 1

Format	Color
Hex	D9A78C
RGB	217, 167, 140
RGB Percent	85%, 65%, 55%
CMY	0.1490, 0.3451, 0.4510
CMYK	0.00, 0.23, 0.35, 0.15
HSL	21°, 50%, 70%
HSV	21°, 35%, 85%
XYZ	47.1676, 44.2826, 30.8723
YIQ	178.8720, 38.4670, 2.2030

# Conversions

## Conversions Part 2

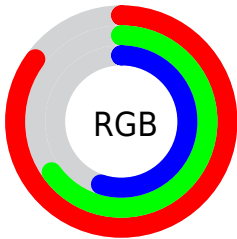
Format	Color
<a href="#">RYB</a>	<a href="#">217, 182, 140</a>
Decimal	<a href="#">14264204</a>
CIELab	<a href="#">72.42, 14.75, 21.05</a>
CIELCh	<a href="#">72, 25.705, 54.984</a>
Yxy	<a href="#">44.2826, 0.3856, 0.3620</a>
Android (android.graphics.Color)	<a href="#">4292454284 (0xFFD9A78C)</a>
YUV	<a href="#">178.8720, -19.1639, 33.4383</a>
Hunter-Lab	<a href="#">66.5452, 10.0678, 19.0752</a>

# Details

The Hex color **D9A78C** is a light color, and the websafe version is hex **CC9966**. A complement of this color would be **8CBED9**, and the grayscale version is **B3B3B3**.

A 20% lighter version of the original color is **FFDEC2**, and **A1735A** is the 20% darker color. If you saturate the color by 10%, you get **D99976**, and if you desaturate by 10%, it is **D9B5A2**.

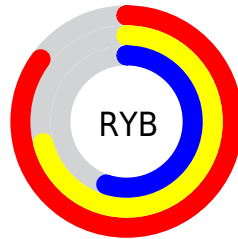
# Distribution



Red (85%)

Green (65%)

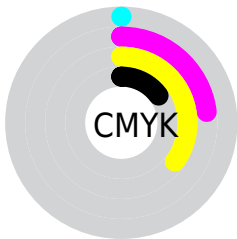
Blue (55%)



Red (85%)

Yellow (71%)

Blue (55%)

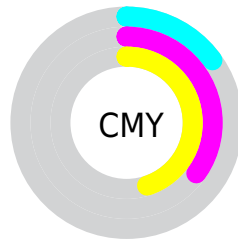


Cyan (0%)

Magenta (23%)

Yellow (35%)

Black (15%)



Cyan (15%)

Magenta (35%)

Yellow (45%)

# Brightness & Saturation Gradients

These gradients show how the Hex color D9A78C changes by changing the brightness by 10 percent. The first figure shows a shift by +10% for each color and the second figure -10%.

Similar to the brightness gradients but the following saturation gradients show a change of the Hex color D9A78C by changing the saturation by 10% instead.



 D9A78C

FFFFFF

 FFDEC2

 FFFBDE

 FFFFFA

 D9A78C

 BC8D72

 A1735A

 855A42

 6B432C

 512C17

 391700

 220000

 000000

 D9A78C

 D9A78C

 D99976

 D9B5A2

 D98B61

 D9C3B7

 D97D4B

 D9D1CD

 D96F35

 D9DFE3

 D96120

 D9EDF9

 D9520A

 D9FCFF

 D94C00

 D9FFFF

# Harmonies

## Analogous

The Analogous color harmony consists of three colors that are next to each other on the color wheel.



E1A29F



D9A78C



C7AF83

# Triad

The Triadic color harmony groups three colors that are evenly spaced from another and form a triangle on the color wheel.



D9A78C



7BBFAD



B0ADDC

# Complementary

The Complementary color scheme is a pair of colors which are on the opposite of each other on the color wheel.



D9A78C



8CBED9

# Split Complementary

Split-complementary colors differ from the complementary color scheme. The scheme consists of three colors, the original color and two neighbors of the complement color.



8FB5E0



D9A78C



6DBEC5

# Square

The Square scheme is like the rectangle color scheme, but the four colors are evenly spaced on the color wheel.



D9A78C



93BC96



75BBD7



CCA5CD

# Rectangle

The Rectangle color scheme consists of four colors that form a rectangle on the color wheel.



D9A78C



B7B484



75BBD7



A5B0DF

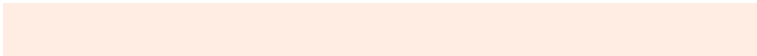


# Sweetspot

The Sweet Spot groups the original color and five complimentary colors.



D9A78C



FFEDE3



D98CBE



80756F



000000



808080



# Same Dimension

The Same Dimension uses a secret algorithm to generate beautiful new colors.



D9A78C



FFB891



D9CD8C



6E6763



AD3D00



2E1000

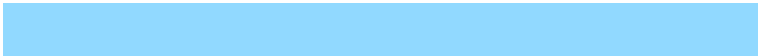


# Inverse Universe

The Inverse Universe completely reimagines the original color for something new.



8CBED9



91D9FF



8C98D9



636A6E



0071AD



001E2E



# Previews

## White Background



This preview shows how the Hex color D9A78C looks on a white background.

## Color Contrast Check

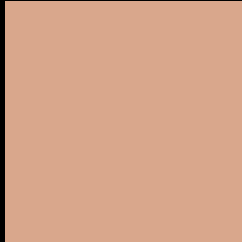
Large Text (above 18pt) WCAG AA × Fail

Any Text WCAG AA × Fail

Large Text (above 18pt) WCAG AAA × Fail

Any Text WCAG AAA × Fail

# Black Background



This preview shows how the Hex color D9A78C looks on a black background.

## Color Contrast Check

Large Text (above 18pt) WCAG AA ✓ Pass

Any Text WCAG AA ✓ Pass

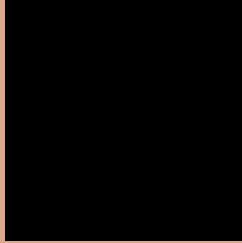
Large Text (above 18pt) WCAG AAA ✓ Pass

Any Text WCAG AAA ✓ Pass

If you want to check with other color combinations, try the [Color Contrast Checker](#).



## Hex D9A78C Background



This preview shows how black text looks on a background with the Hex color D9A78C.

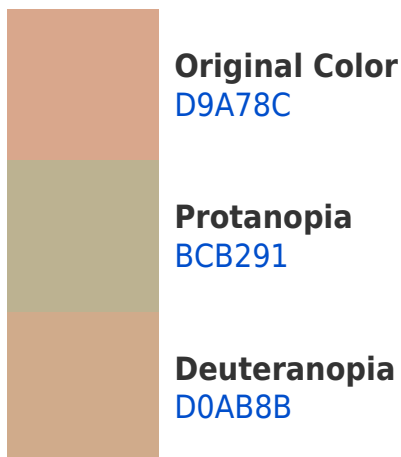


This preview shows how white text looks on a background with the Hex color D9A78C.

# Color Blindness Simulation

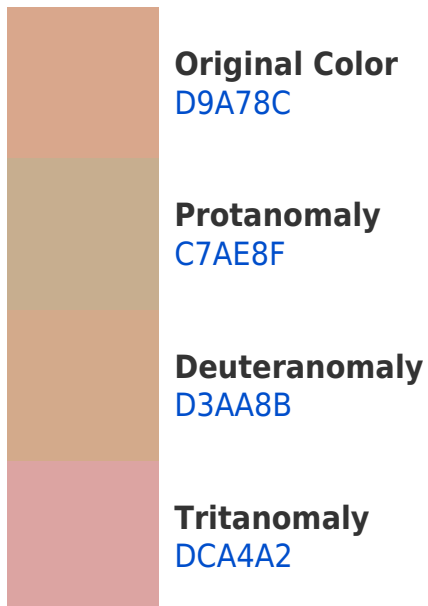
Color vision deficiency is a very complex topic, and I could not describe the different causes any better than Wikipedia does, so if you want to learn more, you should check out their [article about color blindness](#).

## Dichromacy





# Trichromacy



# Monochromacy



# CSS Examples

## Text

The CSS property to change the color of the text to Hex D9A78C is called "color". The color property can be set on classes, ids or directly on the HTML element.

This example shows how text in the color #D9A78C looks like.

```
.text, #text, p{  
    color:#D9A78C  
}
```

If you want to add a text shadow in that color use the text-shadow property, you can generate a text shadow directly with our [CSS Text Shadow Generator](#).

Here you see how black text with a 4 pixel #D9A78C colored shadow looks like.

```
.shadow{ text-shadow: 4px 4px 2px #D9A78C
}
```

## Border

The CSS property to change the border of an element to Hex D9A78C is called "border". The border property can be set on classes, ids or directly on the HTML element.

This example shows the color as border, it can be applied via the CSS property "border" or "border-color".

```
.border, #border, table{ border:4px solid
#D9A78C }
```

If only the border color should be changed use the property `border-color`.

```
.border{ border-color:#D9A78C }
```

If you want to add a box shadow in that color use:

Here you see how a box with a 4 pixel #D9A78C colored shadow looks like.

```
.boxshadow{ -moz-box-shadow:4px 4px 4px  
4px #D9A78C; -webkit-box-shadow:4px 4px  
4px 4px #D9A78C; box-shadow:4px 4px 4px  
4px #D9A78C }
```

# Background

The CSS property to change the background color of an element to Hex D9A78C is called "background". The background property can be set on classes, ids or directly on the HTML element.

```
.background, #background, body{  
background:#D9A78C }
```

If only the background color should be changed can be used:

```
.background{ background-color:#D9A78C }
```

This example shows the color as background, it is applied via the CSS property "background".

To optimize and compress your CSS code, you can use our [online CSS compressor and optimizer](#) based on csstidy. If you want to create a linear or radial gradient as background or border, check our [CSS Gradient Generator](#).



Hey! You found this booklet interesting? Support Converting Colors with the new Membership Option!

The pro membership hides all ads, plus gives you double the colors in the color bucket, and more awesome pro features!

**[Learn more, Memberships starting at \\$2.50/m!](#)**

**Follow me  
on Twitter!**

@ConvertingColor