

Converting Colors

Hex(D9A893)

Have a look what the booklet for
Hex(D9A893) contains.

Hex(D9A893)	3
<i>Conversions</i>	4
<i>Details</i>	6
<i>Harmonies</i>	11
<i>Previews</i>	23
<i>Color Blindness Simulation</i>	26
<i>CSS Examples</i>	29

Color

Hex(D9A893)

Conversions

Conversions Part 1

Format	Color
Hex	D9A893
RGB	217, 168, 147
RGB Percent	85%, 66%, 58%
CMY	0.1490, 0.3412, 0.4235
CMYK	0.00, 0.23, 0.32, 0.15
HSL	18°, 48%, 71%
HSV	18°, 32%, 85%
XYZ	47.8844, 44.8636, 33.7395
YIQ	180.2570, 35.9450, 3.8570

Conversions

Conversions Part 2

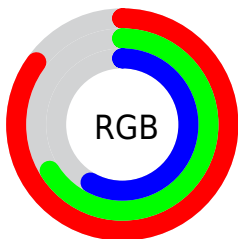
Format	Color
R _Y B	217, 177, 147
Decimal	14264467
CIE Lab	72.80, 15.09, 17.77
CIE LCh	73, 23.308, 49.668
Yxy	44.8636, 0.3786, 0.3547
Android (android.graphics.Color)	4292454547 (0xFFD9A893)
YUV	180.2570, -16.3957, 32.2236
Hunter-Lab	66.9803, 10.3946, 17.0204

Details

The Hex color **D9A893** is a light color, and the websafe version is hex **CC9999**. A complement of this color would be **93C4D9**, and the grayscale version is **B4B4B4**.

A 20% lighter version of the original color is **FFDFC9**, and **A17460** is the 20% darker color. If you saturate the color by 10%, you get **D9997D**, and if you desaturate by 10%, it is **D9B7A9**.

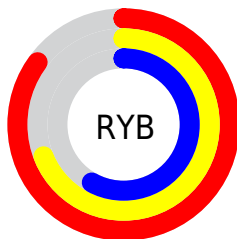
Distribution



Red (85%)

Green (66%)

Blue (58%)



Red (85%)

Yellow (69%)

Blue (58%)

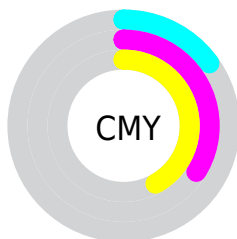


Cyan (0%)

Magenta (23%)

Yellow (32%)

Black (15%)



Cyan (15%)

Magenta (34%)

Yellow (42%)

Brightness & Saturation Gradients

These gradients show how the Hex color D9A893 changes by changing the brightness by 10 percent. The first figure shows a shift by +10% for each color and the second figure -10%.

Similar to the brightness gradients but the following saturation gradients show a change of the Hex color D9A893 by changing the saturation by 10% instead.

 D9A893

 D9A893

FFFFFF

 BD8E79

 FFDFC9

 A17460

 FFFCE5

 865B49

 6B4332

 522D1D

 391804

 230000

 000000

 D9A893

 D9A893

 D9997D

 D9B7A9

 D98A68

 D9C6BE

 D97A52

 D9D6D4

 D96B3C

 D9E5EA

 D95C26

 D9F4FF

 D94D11

 D9FFFF

 D94100

Harmonies

Analogous

The Analogous color harmony consists of three colors that are next to each other on the color wheel.



DFA4A5



D9A893



CAAF89

Triad

The Triadic color harmony groups three colors that are evenly spaced from another and form a triangle on the color wheel.



D9A893



85BEAA



ACB0DB

Complementary

The Complementary color scheme is a pair of colors which are on the opposite of each other on the color wheel.



D9A893



93C4D9

Split Complementary

Split-complementary colors differ from the complementary color scheme. The scheme consists of three colors, the original color and two neighbors of the complement color.



90B7DC



D9A893



77BFC0

Square

The Square scheme is like the rectangle color scheme, but the four colors are evenly spaced on the color wheel.



D9A893



9CBB97



7BBCD2



C7A9CE

Rectangle

The Rectangle color scheme consists of four colors that form a rectangle on the color wheel.



D9A893



BCB389



7BBCD2



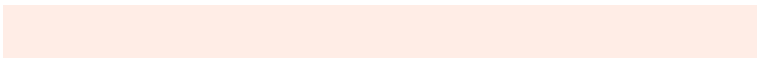
A3B2DC

Sweetspot

The Sweet Spot groups the original color and five complimentary colors.



D9A893



FFEDE6



D993C4



807570



000000



808080

Same Dimension

The Same Dimension uses a secret algorithm to generate beautiful new colors.



D9A893



FFB99C



D9CB93



6E6663



AD3400



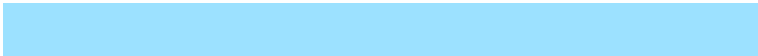
2E0E00

Inverse Universe

The Inverse Universe completely reimagines the original color for something new.



93C4D9



9CE1FF



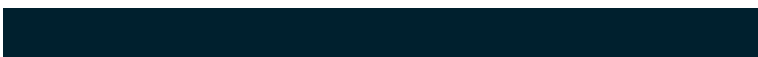
93A1D9



636A6E



0079AD



00202E

Previews

White Background



This preview shows how the Hex color D9A893 looks on a white background.

Color Contrast Check

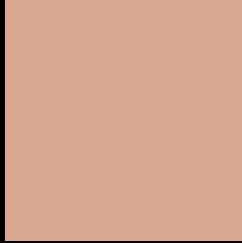
Large Text (above 18pt) WCAG AA × Fail

Any Text WCAG AA × Fail

Large Text (above 18pt) WCAG AAA × Fail

Any Text WCAG AAA × Fail

Black Background



This preview shows how the Hex color D9A893 looks on a black background.

Color Contrast Check

Large Text (above 18pt) WCAG AA ✓ Pass

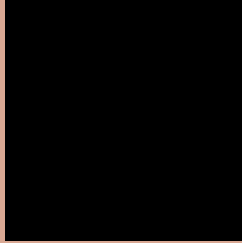
Any Text WCAG AA ✓ Pass

Large Text (above 18pt) WCAG AAA ✓ Pass

Any Text WCAG AAA ✓ Pass

If you want to check with other color combinations, try the [Color Contrast Checker](#).

Hex D9A893 Background



This preview shows how black text looks on a background with the Hex color D9A893.

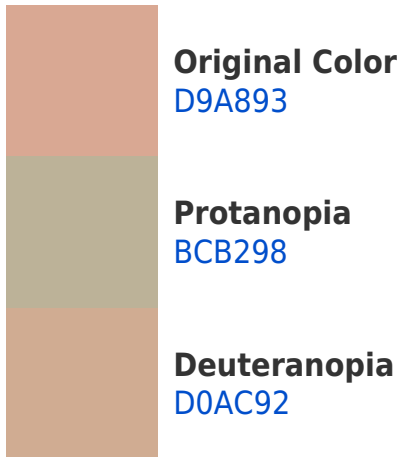


This preview shows how white text looks on a background with the Hex color D9A893.

Color Blindness Simulation

Color vision deficiency is a very complex topic, and I could not describe the different causes any better than Wikipedia does, so if you want to learn more, you should check out their [article about color blindness](#).

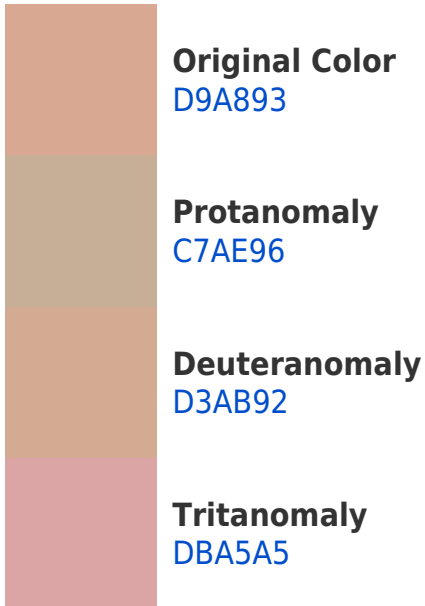
Dichromacy





Tritanopia
DCA4B0

Trichromacy



Monochromacy



CSS Examples

Text

The CSS property to change the color of the text to Hex D9A893 is called "color". The color property can be set on classes, ids or directly on the HTML element.

This example shows how text in the color #D9A893 looks like.

```
.text, #text, p{  
    color:#D9A893  
}
```

If you want to add a text shadow in that color use the text-shadow property, you can generate a text shadow directly with our [CSS Text Shadow Generator](#).

Here you see how black text with a 4 pixel #D9A893 colored shadow looks like.

```
.shadow{ text-shadow: 4px 4px 2px #D9A893
}
```

Border

The CSS property to change the border of an element to Hex D9A893 is called "border". The border property can be set on classes, ids or directly on the HTML element.

This example shows the color as border, it can be applied via the CSS property "border" or "border-color".

```
.border, #border, table{ border:4px solid
#D9A893 }
```

If only the border color should be changed use the property `border-color`.

```
.border{ border-color:#D9A893 }
```

If you want to add a box shadow in that color use:

Here you see how a box with a 4 pixel #D9A893 colored shadow looks like.

```
.boxshadow{ -moz-box-shadow:4px 4px 4px  
4px #D9A893; -webkit-box-shadow:4px 4px  
4px 4px #D9A893; box-shadow:4px 4px 4px  
4px #D9A893 }
```

Background

The CSS property to change the background color of an element to Hex D9A893 is called "background". The background property can be set on classes, ids or directly on the HTML element.

```
.background, #background, body{  
background:#D9A893 }
```

If only the background color should be changed can be used:

```
.background{ background-color:#D9A893 }
```

This example shows the color as background, it is applied via the CSS property "background".

To optimize and compress your CSS code, you can use our [online CSS compressor and optimizer](#) based on csstidy. If you want to create a linear or radial gradient as background or border, check our [CSS Gradient Generator](#).

Hey! You found this booklet interesting? Support Converting Colors with the new Membership Option!

The pro membership hides all ads, plus gives you double the colors in the color bucket, and more awesome pro features!

[Learn more, Memberships starting at \\$2.50/m!](#)

**Follow me
on Twitter!**

@ConvertingColor