

# Converting Colors

Hex(D9A9AA)

Have a look what the booklet for  
Hex(D9A9AA) contains.

<b>Hex(D9A9AA)</b> .....	3
<b><i>Conversions</i></b> .....	4
<b><i>Details</i></b> .....	6
<b><i>Harmonies</i></b> .....	11
<b><i>Previews</i></b> .....	23
<b><i>Color Blindness Simulation</i></b> .....	26
<b><i>CSS Examples</i></b> .....	29

# **Color**

**Hex(D9A9AA)**

# Conversions

## Conversions Part 1

Format	Color
Hex	D9A9AA
RGB	217, 169, 170
RGB Percent	85%, 66%, 67%
CMY	0.1490, 0.3373, 0.3333
CMYK	0.00, 0.22, 0.22, 0.15
HSL	359°, 39%, 76%
HSV	359°, 22%, 85%
XYZ	50.0589, 46.0299, 44.2765
YIQ	183.4660, 28.2870, 10.4870

# Conversions

## Conversions Part 2

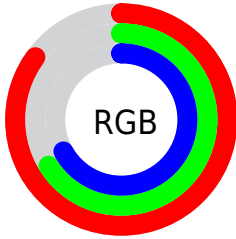
Format	Color
<a href="#">RYB</a>	<a href="#">217, 169, 170</a>
Decimal	<a href="#">14264746</a>
CIELab	<a href="#">73.56, 17.73, 6.25</a>
CIELCh	<a href="#">74, 18.799, 19.417</a>
Yxy	<a href="#">46.0299, 0.3566, 0.3279</a>
Android (android.graphics.Color)	<a href="#">4292454826 (0xFFD9A9AA)</a>
YUV	<a href="#">183.4660, -6.6387, 29.4093</a>
Hunter-Lab	<a href="#">67.8454, 12.9748, 8.7986</a>

# Details

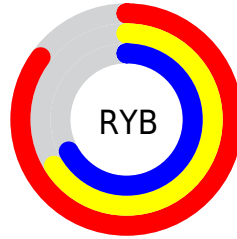
The Hex color **D9A9AA** is a light color, and the websafe version is hex **CC9999**. A complement of this color would be **A9D9D8**, and the grayscale version is **B8B8B8**.

A 20% lighter version of the original color is **FFE0E1**, and **A17576** is the 20% darker color. If you saturate the color by 10%, you get **D99395**, and if you desaturate by 10%, it is **D9BFBF**.

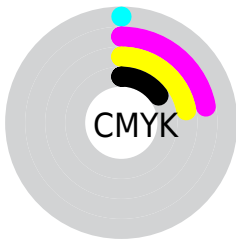
# Distribution



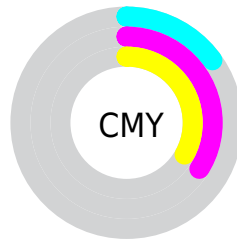
- Red (85%)
- Green (66%)
- Blue (67%)



- Red (85%)
- Yellow (66%)
- Blue (67%)



- Cyan (0%)
- Magenta (22%)
- Yellow (22%)
- Black (15%)



- Cyan (15%)
- Magenta (34%)
- Yellow (33%)

# Brightness & Saturation Gradients

These gradients show how the Hex color D9A9AA changes by changing the brightness by 10 percent. The first figure shows a shift by +10% for each color and the second figure -10%.

Similar to the brightness gradients but the following saturation gradients show a change of the Hex color D9A9AA by changing the saturation by 10% instead.



 D9A9AA

 D9A9AA

FFFFFF

 BD8E90

 FFE0E1

 A17576

 FFFDFE

 875C5D

 6D4446

 532D2F

 3B181B

 270000

 000000

 D9A9AA

 D9A9AA

 D99395

 D9BFBF

 D97E80

 D9D4D4

 D9686A

 D9EAEA

 D95255

 D9FFFF

 D93D40

 D9272B

 D91115

 D90005

# Harmonies

## Analogous

The Analogous color harmony consists of three colors that are next to each other on the color wheel.



D4A9BC



D9A9AA



D5AC9B

# Triad

The Triadic color harmony groups three colors that are evenly spaced from another and form a triangle on the color wheel.



D9A9AA



A2BC9E



9AB8D6

# Complementary

The Complementary color scheme is a pair of colors which are on the opposite of each other on the color wheel.



D9A9AA



A9D9D8

# Split Complementary

Split-complementary colors differ from the complementary color scheme. The scheme consists of three colors, the original color and two neighbors of the complement color.



8ABCCE



D9A9AA



91BEAE

# Square

The Square scheme is like the rectangle color scheme, but the four colors are evenly spaced on the color wheel.



D9A9AA



B6B794



87BFBF



B0B2D5

# Rectangle

The Rectangle color scheme consists of four colors that form a rectangle on the color wheel.



D9A9AA



CDB095



87BFBF



93BAD4

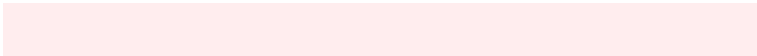


# Sweetspot

The Sweet Spot groups the original color and five complimentary colors.



D9A9AA



FFEDEE



D7A9D9



807576



000000



808080



# Same Dimension

The Same Dimension uses a secret algorithm to generate beautiful new colors.



D9A9AA



FFBABC



D9BFA9



6E6363



AD0004



2E0001



# Inverse Universe

The Inverse Universe completely reimagines the original color for something new.



D9A9AA



FFBABC



A9C3D9



6E6363



AD0004

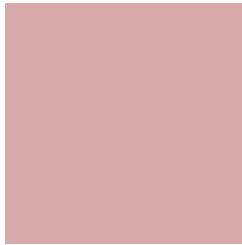


2E0001



# Previews

## White Background



This preview shows how the Hex color D9A9AA looks on a white background.

## Color Contrast Check

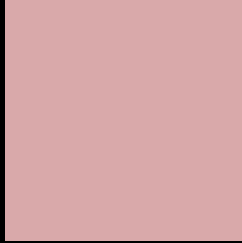
Large Text (above 18pt) WCAG AA × Fail

Any Text WCAG AA × Fail

Large Text (above 18pt) WCAG AAA × Fail

Any Text WCAG AAA × Fail

# Black Background



This preview shows how the Hex color D9A9AA looks on a black background.

## Color Contrast Check

Large Text (above 18pt) WCAG AA ✓ Pass

Any Text WCAG AA ✓ Pass

Large Text (above 18pt) WCAG AAA ✓ Pass

Any Text WCAG AAA ✓ Pass

If you want to check with other color combinations, try the [Color Contrast Checker](#).



## Hex D9A9AA Background



This preview shows how black text looks on a background with the Hex color D9A9AA.

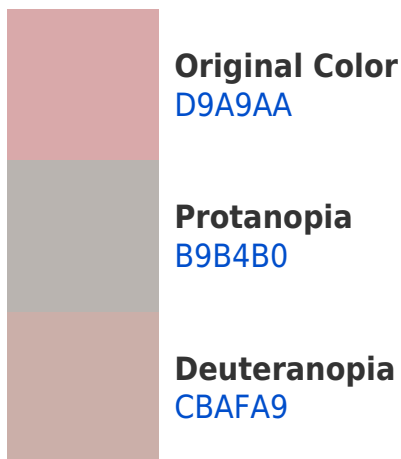


This preview shows how white text looks on a background with the Hex color D9A9AA.

# Color Blindness Simulation

Color vision deficiency is a very complex topic, and I could not describe the different causes any better than Wikipedia does, so if you want to learn more, you should check out their [article about color blindness](#).

## Dichromacy





**Tritanopia**  
DAA7B4

# Trichromacy



**Original Color**  
D9A9AA

**Protanomaly**  
C5B0AE

**Deuteranomaly**  
D0ADA9

**Tritanomaly**  
DAA8B0

# Monochromacy



**Original Color**  
D9A9AA

**Achromatopsia**  
B7B7B7

**Achromatomaly**  
C3B2B2

# CSS Examples

## Text

The CSS property to change the color of the text to Hex D9A9AA is called "color". The color property can be set on classes, ids or directly on the HTML element.

This example shows how text in the color #D9A9AA looks like.

```
.text, #text, p{  
    color:#D9A9AA  
}
```

If you want to add a text shadow in that color use the text-shadow property, you can generate a text shadow directly with our [CSS Text Shadow Generator](#).

Here you see how black text with a 4 pixel #D9A9AA colored shadow looks like.

```
.shadow{ text-shadow: 4px 4px 2px #D9A9AA }  
}
```

## Border

The CSS property to change the border of an element to Hex D9A9AA is called "border". The border property can be set on classes, ids or directly on the HTML element.

This example shows the color as border, it can be applied via the CSS property "border" or "border-color".

```
.border, #border, table{ border:4px solid #D9A9AA }  
}
```

If only the border color should be changed use the property `border-color`.

```
.border{ border-color:#D9A9AA }
```

If you want to add a box shadow in that color use:

Here you see how a box with a 4 pixel #D9A9AA colored shadow looks like.

```
.boxshadow{ -moz-box-shadow:4px 4px 4px  
4px #D9A9AA; -webkit-box-shadow:4px 4px  
4px 4px #D9A9AA; box-shadow:4px 4px 4px  
4px #D9A9AA }
```

# Background

The CSS property to change the background color of an element to Hex D9A9AA is called "background". The background property can be set on classes, ids or directly on the HTML element.

```
.background, #background, body{  
background:#D9A9AA }
```

If only the background color should be changed can be used:

```
.background{ background-color:#D9A9AA }
```

This example shows the color as background, it is applied via the CSS property "background".

To optimize and compress your CSS code, you can use our [online CSS compressor and optimizer](#) based on csstidy. If you want to create a linear or radial gradient as background or border, check our [CSS Gradient Generator](#).



Hey! You found this booklet interesting? Support Converting Colors with the new Membership Option!

The pro membership hides all ads, plus gives you double the colors in the color bucket, and more awesome pro features!

**[Learn more, Memberships starting at \\$2.50/m!](#)**

**Follow me  
on Twitter!**

@ConvertingColor