

# Converting Colors

Hex(D9AA78)

Have a look what the booklet for  
Hex(D9AA78) contains.

<b>Hex(D9AA78)</b> .....	3
<b><i>Conversions</i></b> .....	4
<b><i>Details</i></b> .....	6
<b><i>Harmonies</i></b> .....	11
<b><i>Previews</i></b> .....	23
<b><i>Color Blindness Simulation</i></b> .....	26
<b><i>CSS Examples</i></b> .....	29

# **Color**

**Hex(D9AA78)**

# Conversions

## Conversions Part 1

<b>Format</b>	<b>Color</b>
Hex	D9AA78
RGB	217, 170, 120
RGB Percent	85%, 67%, 47%
CMY	0.1490, 0.3333, 0.5294
CMYK	0.00, 0.22, 0.45, 0.15
HSL	31°, 56%, 66%
HSV	31°, 45%, 85%
XYZ	46.3802, 44.8572, 23.9831
YIQ	178.3530, 44.0620, -5.5860

# Conversions

## Conversions Part 2

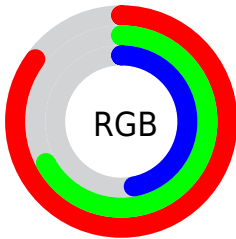
Format	Color
<a href="#">RYB</a>	<a href="#">211, 217, 120</a>
Decimal	<a href="#">14264952</a>
CIELab	<a href="#">72.80, 10.89, 32.31</a>
CIELCh	<a href="#">73, 34.101, 71.372</a>
Yxy	<a href="#">44.8572, 0.4025, 0.3893</a>
Android (android.graphics.Color)	<a href="#">4292455032</a> ( <a href="#">0xFFD9AA78</a> )
YUV	<a href="#">178.3530, -28.7680, 33.8934</a>
Hunter-Lab	<a href="#">66.9755, 6.4030, 25.6519</a>

# Details

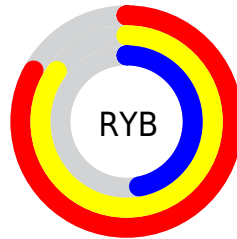
The Hex color **D9AA78** is a light color, and the websafe version is hex **CC9966**. A complement of this color would be **78A7D9**, and the grayscale version is **B3B3B3**.

A 20% lighter version of the original color is **FFE1AD**, and **A07647** is the 20% darker color. If you saturate the color by 10%, you get **D99F62**, and if you desaturate by 10%, it is **D9B58E**.

# Distribution



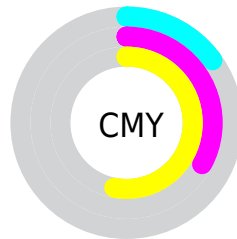
- Red (85%)
- Green (67%)
- Blue (47%)



- Red (83%)
- Yellow (85%)
- Blue (47%)



- Cyan (0%)
- Magenta (22%)
- Yellow (45%)
- Black (15%)



- Cyan (15%)
- Magenta (33%)
- Yellow (53%)

# Brightness & Saturation Gradients

These gradients show how the Hex color D9AA78 changes by changing the brightness by 10 percent. The first figure shows a shift by +10% for each color and the second figure -10%.

Similar to the brightness gradients but the following saturation gradients show a change of the Hex color D9AA78 by changing the saturation by 10% instead.





D9AA78



D9AA78

FFFFFF



BC905F



FFE1AD



A07647



FFFE08



845D2F



FFFFE5



6A4618



502F00



361A00



1F0100



000000



D9AA78



D9AA78

 D99F62

 D9B58E

 D9954D

 D9BFA3

 D98A37

 D9CAB9

 D98021

 D9D4CF

 D9750B

 D9DFE5

 D97000

 D9E9FA

 D9F4FF

 D9FEFF

 D9FFFF

# Harmonies

## Analogous

The Analogous color harmony consists of three colors that are next to each other on the color wheel.



ECA08B



D9AA78



BCB575

# Triad

The Triadic color harmony groups three colors that are evenly spaced from another and form a triangle on the color wheel.



D9AA78



52C4BE



C6A6E2

# Complementary

The Complementary color scheme is a pair of colors which are on the opposite of each other on the color wheel.



D9AA78



78A7D9

# Split Complementary

Split-complementary colors differ from the complementary color scheme. The scheme consists of three colors, the original color and two neighbors of the complement color.



9BB2EF



D9AA78



48C2DB

# Square

The Square scheme is like the rectangle color scheme, but the four colors are evenly spaced on the color wheel.



D9AA78



74C29E



6ABBED



E49EC7

# Rectangle

The Rectangle color scheme consists of four colors that form a rectangle on the color wheel.



D9AA78



A6BA7C



6ABBED



B9AAE8

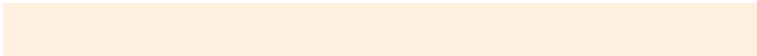


# Sweetspot

The Sweet Spot groups the original color and five complimentary colors.



D9AA78



FFEFDE



D978A9



80766B



000000



808080



# Same Dimension

The Same Dimension uses a secret algorithm to generate beautiful new colors.



D9AA78



FFBC75



D9D978



6E6863



AD5900



2E1800

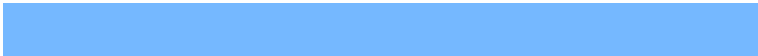


# Inverse Universe

The Inverse Universe completely reimagines the original color for something new.



78A7D9



75B8FF



7878D9



63686E



0054AD

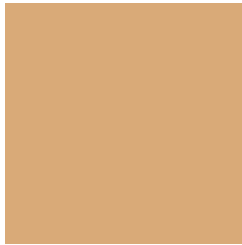


00162E



# Previews

## White Background



This preview shows how the Hex color D9AA78 looks on a white background.

## Color Contrast Check

Large Text (above 18pt) WCAG AA × Fail

Any Text WCAG AA × Fail

Large Text (above 18pt) WCAG AAA × Fail

Any Text WCAG AAA × Fail

# Black Background



This preview shows how the Hex color D9AA78 looks on a black background.

## Color Contrast Check

Large Text (above 18pt) WCAG AA ✓ Pass

Any Text WCAG AA ✓ Pass

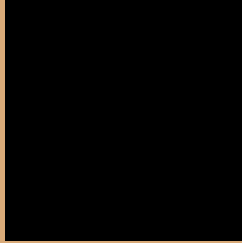
Large Text (above 18pt) WCAG AAA ✓ Pass

Any Text WCAG AAA ✓ Pass

If you want to check with other color combinations, try the [Color Contrast Checker](#).



## Hex D9AA78 Background



This preview shows how black text looks on a background with the Hex color D9AA78.



This preview shows how white text looks on a background with the Hex color D9AA78.

# Color Blindness Simulation

Color vision deficiency is a very complex topic, and I could not describe the different causes any better than Wikipedia does, so if you want to learn more, you should check out their [article about color blindness](#).

## Dichromacy



**Original Color**  
D9AA78

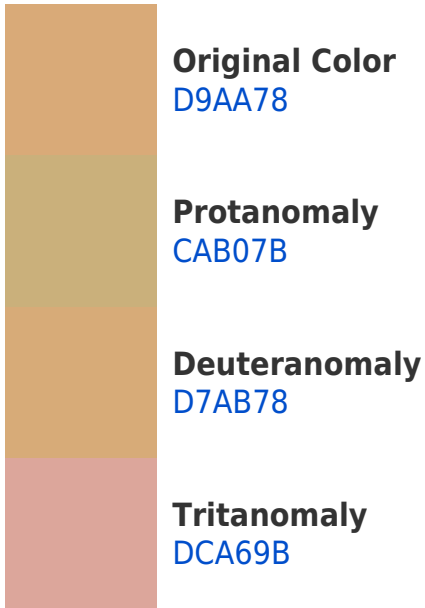
**Protanopia**  
C1B37C

**Deuteranopia**  
D6AB78

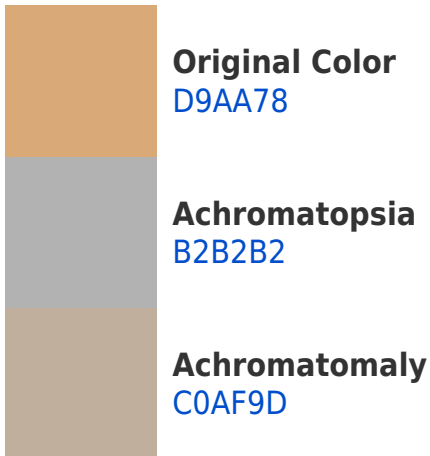


**Tritanopia**  
DEA3AF

# Trichromacy



# Monochromacy



# CSS Examples

## Text

The CSS property to change the color of the text to Hex D9AA78 is called "color". The color property can be set on classes, ids or directly on the HTML element.

This example shows how text in the color #D9AA78 looks like.

```
.text, #text, p{  
    color:#D9AA78  
}
```

If you want to add a text shadow in that color use the text-shadow property, you can generate a text shadow directly with our [CSS Text Shadow Generator](#).

Here you see how black text with a 4 pixel #D9AA78 colored shadow looks like.

```
.shadow{ text-shadow: 4px 4px 2px #D9AA78  
}
```

## Border

The CSS property to change the border of an element to Hex D9AA78 is called "border". The border property can be set on classes, ids or directly on the HTML element.

This example shows the color as border, it can be applied via the CSS property "border" or "border-color".

```
.border, #border, table{ border:4px solid  
#D9AA78 }
```

If only the border color should be changed use the property `border-color`.

```
.border{ border-color:#D9AA78 }
```

If you want to add a box shadow in that color use:

Here you see how a box with a 4 pixel #D9AA78 colored shadow looks like.

```
.boxshadow{ -moz-box-shadow:4px 4px 4px  
4px #D9AA78; -webkit-box-shadow:4px 4px  
4px 4px #D9AA78; box-shadow:4px 4px 4px  
4px #D9AA78 }
```

# Background

The CSS property to change the background color of an element to Hex D9AA78 is called "background". The background property can be set on classes, ids or directly on the HTML element.

```
.background, #background, body{  
background:#D9AA78 }
```

If only the background color should be changed can be used:

```
.background{ background-color:#D9AA78 }
```

This example shows the color as background, it is applied via the CSS property "background".

To optimize and compress your CSS code, you can use our [online CSS compressor and optimizer](#) based on csstidy. If you want to create a linear or radial gradient as background or border, check our [CSS Gradient Generator](#).



Hey! You found this booklet interesting? Support Converting Colors with the new Membership Option!

The pro membership hides all ads, plus gives you double the colors in the color bucket, and more awesome pro features!

**[Learn more, Memberships starting at \\$2.50/m!](#)**

**Follow me  
on Twitter!**

@ConvertingColor