

Converting Colors

Hex(D9AC80)

Have a look what the booklet for
Hex(D9AC80) contains.

Hex(D9AC80)	3
<i>Conversions</i>	4
<i>Details</i>	6
<i>Harmonies</i>	11
<i>Previews</i>	23
<i>Color Blindness Simulation</i>	26
<i>CSS Examples</i>	29

Color

Hex(D9AC80)

Conversions

Conversions Part 1

Format	Color
Hex	D9AC80
RGB	217, 172, 128
RGB Percent	85%, 67%, 50%
CMY	0.1490, 0.3255, 0.4980
CMYK	0.00, 0.21, 0.41, 0.15
HSL	30°, 54%, 68%
HSV	30°, 41%, 85%
XYZ	47.2641, 45.8153, 26.7742
YIQ	180.4390, 40.9440, -4.1440

Conversions

Conversions Part 2

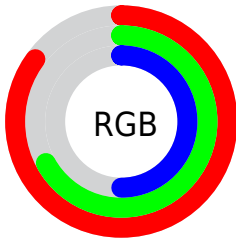
Format	Color
RYB	217, 215, 128
Decimal	14265472
CIELab	73.43, 10.67, 28.88
CIElCh	73, 30.791, 69.721
Yxy	45.8153, 0.3943, 0.3823
Android (android.graphics.Color)	4292455552 (0xFFD9AC80)
YUV	180.4390, -25.8524, 32.0640
Hunter-Lab	67.6870, 6.1897, 23.9282

Details

The Hex color **D9AC80** is a light color, and the websafe version is hex **CC9966**. A complement of this color would be **80ADD9**, and the grayscale version is **B5B5B5**.

A 20% lighter version of the original color is **FFE3B5**, and **A0784E** is the 20% darker color. If you saturate the color by 10%, you get **D9A16A**, and if you desaturate by 10%, it is **D9B796**.

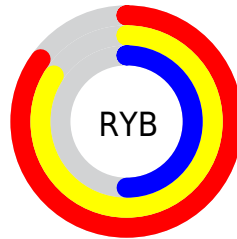
Distribution



Red (85%)

Green (67%)

Blue (50%)



Red (85%)

Yellow (84%)

Blue (50%)

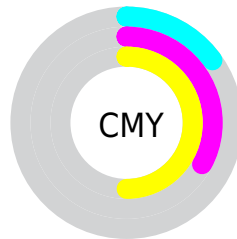


Cyan (0%)

Magenta (21%)

Yellow (41%)

Black (15%)



Cyan (15%)

Magenta (33%)

Yellow (50%)

Brightness & Saturation Gradients

These gradients show how the Hex color D9AC80 changes by changing the brightness by 10 percent. The first figure shows a shift by +10% for each color and the second figure -10%.

Similar to the brightness gradients but the following saturation gradients show a change of the Hex color D9AC80 by changing the saturation by 10% instead.

 D9AC80

 D9AC80

FFFFFF

 BC9167

 FFE3B5

 A0784E

 FFFFD1

 855F37

 FFFFED

 6A4720

 50310A

 381C00

 200400

 000000

 D9AC80

 D9AC80

 D9A16A

 D9B796

 D99655

 D9C2AB

 D98B3F

 D9CDC1

 D98029

 D9D8D7

 D97513

 D9E3ED

 D96B00

 D9EEFF

 D9F9FF

 D9FFFF

Harmonies

Analogous

The Analogous color harmony consists of three colors that are next to each other on the color wheel.



E9A392



D9AC80



BFB67C

Triad

The Triadic color harmony groups three colors that are evenly spaced from another and form a triangle on the color wheel.



D9AC80



63C4BD



C4AAE0

Complementary

The Complementary color scheme is a pair of colors which are on the opposite of each other on the color wheel.



D9AC80



80ADD9

Split Complementary

Split-complementary colors differ from the complementary color scheme. The scheme consists of three colors, the original color and two neighbors of the complement color.



9DB4EC



D9AC80



5BC2D7

Square

The Square scheme is like the rectangle color scheme, but the four colors are evenly spaced on the color wheel.



D9AC80



7FC2A0



75BDE9



E0A2C9

Rectangle

The Rectangle color scheme consists of four colors that form a rectangle on the color wheel.



D9AC80



ABBB83



75BDE9



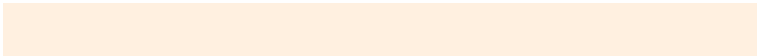
B8ADE5

Sweetspot

The Sweet Spot groups the original color and five complimentary colors.



D9AC80



FFF0E0



D980AE



80766E



000000



808080

Same Dimension

The Same Dimension uses a secret algorithm to generate beautiful new colors.



D9AC80



FFC082



D9D880



6E6863



AD5600



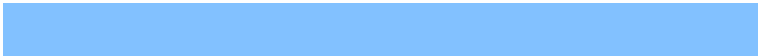
2E1700

Inverse Universe

The Inverse Universe completely reimagines the original color for something new.



80ADD9



82C1FF



8081D9



63686E



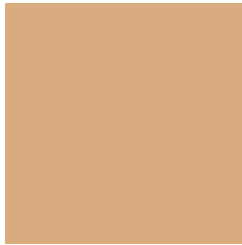
0058AD



00172E

Previews

White Background



This preview shows how the Hex color D9AC80 looks on a white background.

Color Contrast Check

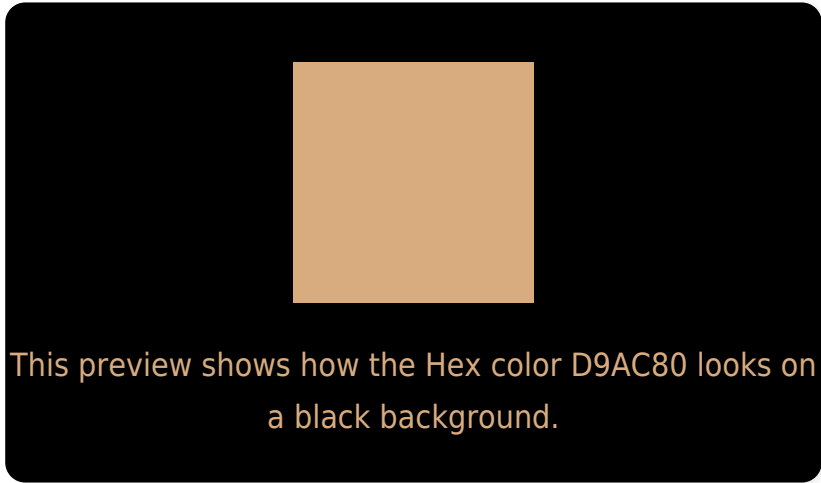
Large Text (above 18pt) WCAG AA × Fail

Any Text WCAG AA × Fail

Large Text (above 18pt) WCAG AAA × Fail

Any Text WCAG AAA × Fail

Black Background



Color Contrast Check

Large Text (above 18pt) WCAG AA ✓ Pass

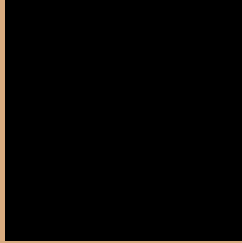
Any Text WCAG AA ✓ Pass

Large Text (above 18pt) WCAG AAA ✓ Pass

Any Text WCAG AAA ✓ Pass

If you want to check with other color combinations, try the [Color Contrast Checker](#).

Hex D9AC80 Background



This preview shows how black text looks on a background with the Hex color D9AC80.

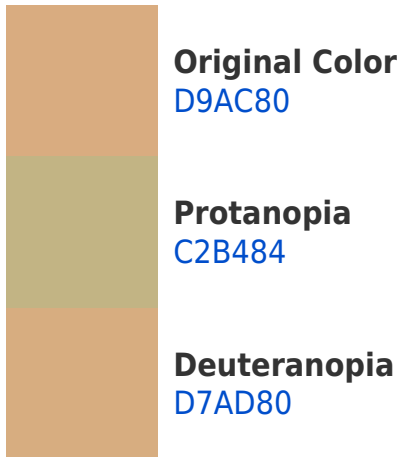


This preview shows how white text looks on a background with the Hex color D9AC80.

Color Blindness Simulation

Color vision deficiency is a very complex topic, and I could not describe the different causes any better than Wikipedia does, so if you want to learn more, you should check out their [article about color blindness](#).

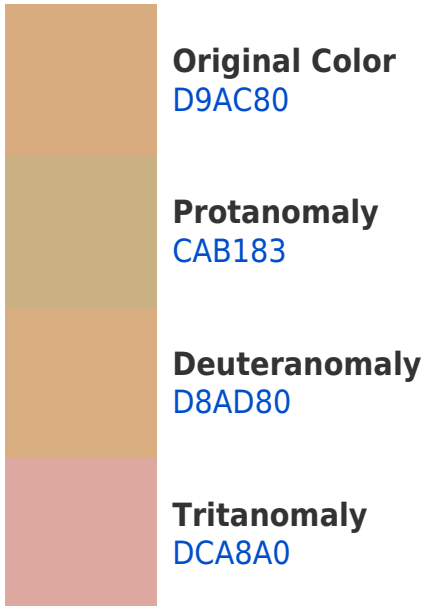
Dichromacy





Tritanopia
DEA5B2

Trichromacy



Monochromacy



CSS Examples

Text

The CSS property to change the color of the text to Hex D9AC80 is called "color". The color property can be set on classes, ids or directly on the HTML element.

This example shows how text in the color #D9AC80 looks like.

```
.text, #text, p{  
    color:#D9AC80  
}
```

If you want to add a text shadow in that color use the text-shadow property, you can generate a text shadow directly with our [CSS Text Shadow Generator](#).

Here you see how black text with a 4 pixel #D9AC80 colored shadow looks like.

```
.shadow{ text-shadow: 4px 4px 2px #D9AC80
}
```

Border

The CSS property to change the border of an element to Hex D9AC80 is called "border". The border property can be set on classes, ids or directly on the HTML element.

This example shows the color as border, it can be applied via the CSS property "border" or "border-color".

```
.border, #border, table{ border:4px solid
#D9AC80 }
```

If only the border color should be changed use the property `border-color`.

```
.border{ border-color:#D9AC80 }
```

If you want to add a box shadow in that color use:

Here you see how a box with a 4 pixel #D9AC80 colored shadow looks like.

```
.boxshadow{ -moz-box-shadow:4px 4px 4px  
4px #D9AC80; -webkit-box-shadow:4px 4px  
4px 4px #D9AC80; box-shadow:4px 4px 4px  
4px #D9AC80 }
```

Background

The CSS property to change the background color of an element to Hex D9AC80 is called "background". The background property can be set on classes, ids or directly on the HTML element.

```
.background, #background, body{  
background:#D9AC80 }
```

If only the background color should be changed can be used:

```
.background{ background-color:#D9AC80 }
```

This example shows the color as background, it is applied via the CSS property "background".

To optimize and compress your CSS code, you can use our [online CSS compressor and optimizer](#) based on csstidy. If you want to create a linear or radial gradient as background or border, check our [CSS Gradient Generator](#).

Hey! You found this booklet interesting? Support Converting Colors with the new Membership Option!

The pro membership hides all ads, plus gives you double the colors in the color bucket, and more awesome pro features!

[Learn more, Memberships starting at \\$2.50/m!](#)

**Follow me
on Twitter!**

@ConvertingColor