

# Converting Colors

Hex(D9ACA3)

Have a look what the booklet for  
Hex(D9ACA3) contains.

<b>Hex(D9ACA3)</b> .....	3
<b><i>Conversions</i></b> .....	4
<b><i>Details</i></b> .....	6
<b><i>Harmonies</i></b> .....	11
<b><i>Previews</i></b> .....	23
<b><i>Color Blindness Simulation</i></b> .....	26
<b><i>CSS Examples</i></b> .....	29

# **Color**

**Hex(D9ACA3)**

# Conversions

## Conversions Part 1

Format	Color
Hex	D9ACA3
RGB	217, 172, 163
RGB Percent	85%, 67%, 64%
CMY	0.1490, 0.3255, 0.3608
CMYK	0.00, 0.21, 0.25, 0.15
HSL	10°, 42%, 75%
HSV	10°, 25%, 85%
XYZ	49.9787, 46.9011, 41.0690
YIQ	184.4290, 29.7090, 6.7410

# Conversions

## Conversions Part 2

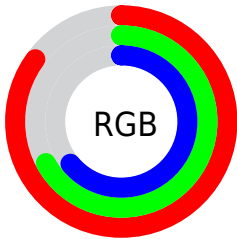
Format	Color
<a href="#">RYB</a>	<a href="#">217, 174, 163</a>
Decimal	<a href="#">14265507</a>
CIELab	<a href="#">74.13, 15.09, 10.89</a>
CIElCh	<a href="#">74, 18.610, 35.800</a>
Yxy	<a href="#">46.9011, 0.3623, 0.3400</a>
Android (android.graphics.Color)	<a href="#">4292455587 (0xFFD9ACA3)</a>
YUV	<a href="#">184.4290, -10.5645, 28.5648</a>
Hunter-Lab	<a href="#">68.4844, 10.4184, 12.3838</a>

# Details

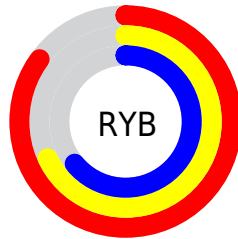
The Hex color **D9ACA3** is a light color, and the websafe version is hex **CC9999**. A complement of this color would be **A3D0D9**, and the grayscale version is **B9B9B9**.

A 20% lighter version of the original color is **FFE3DA**, and **A1786F** is the 20% darker color. If you saturate the color by 10%, you get **D99A8D**, and if you desaturate by 10%, it is **D9BEB9**.

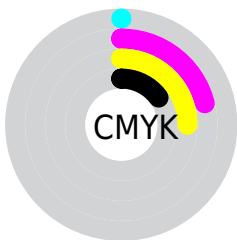
# Distribution



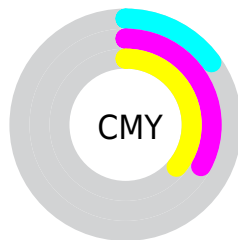
- Red (85%)
- Green (67%)
- Blue (64%)



- Red (85%)
- Yellow (68%)
- Blue (64%)



- Cyan (0%)
- Magenta (21%)
- Yellow (25%)
- Black (15%)



- Cyan (15%)
- Magenta (33%)
- Yellow (36%)

# Brightness & Saturation Gradients

These gradients show how the Hex color D9ACA3 changes by changing the brightness by 10 percent. The first figure shows a shift by +10% for each color and the second figure -10%.

Similar to the brightness gradients but the following saturation gradients show a change of the Hex color D9ACA3 by changing the saturation by 10% instead.



 D9ACA3

 D9ACA3

FFFFFFF

 BD9189

 FFE3DA

 A1786F

 FFFFFFF6

 865F57

 6C4740

 53302A

 3B1B15

 260300

 000000

 D9ACA3

 D9ACA3

 D99A8D

 D9BEB9

 D98878

 D9D0CE

 D97662

 D9E2E4

 D9644C

 D9F4FA

 D95236

 D9FFFF

 D94021

 D92D0B

 D92400

# Harmonies

## Analogous

The Analogous color harmony consists of three colors that are next to each other on the color wheel.



D9AAB3



D9ACA3



D0B098

# Triad

The Triadic color harmony groups three colors that are evenly spaced from another and form a triangle on the color wheel.



D9ACA3



9ABFA8



A7B7D8

# Complementary

The Complementary color scheme is a pair of colors which are on the opposite of each other on the color wheel.



D9ACA3



A3D0D9

# Split Complementary

Split-complementary colors differ from the complementary color scheme. The scheme consists of three colors, the original color and two neighbors of the complement color.



93BCD5



D9ACA3



8CC0B9

# Square

The Square scheme is like the rectangle color scheme, but the four colors are evenly spaced on the color wheel.



D9ACA3



ADBB9A



89BFCA



BEB1D2

# Rectangle

The Rectangle color scheme consists of four colors that form a rectangle on the color wheel.



D9ACA3



C6B494



89BFCA



A0B8D8



# Sweetspot

The Sweet Spot groups the original color and five complimentary colors.



D9ACA3



FFF0ED



D9A3D0



807775



000000



808080



# Same Dimension

The Same Dimension uses a secret algorithm to generate beautiful new colors.



D9ACA3



FFBFB3



D9C7A3



6E6563



AD1D00



2E0800

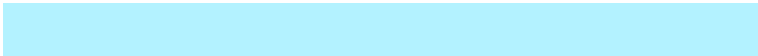


# Inverse Universe

The Inverse Universe completely reimagines the original color for something new.



A3D0D9



B3F2FF



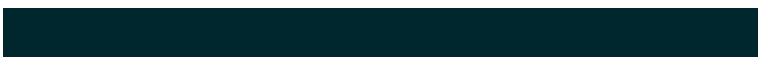
A3B5D9



636C6E



0090AD

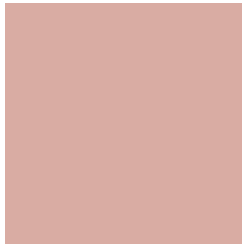


00262E



# Previews

## White Background



This preview shows how the Hex color D9ACA3 looks on a white background.

## Color Contrast Check

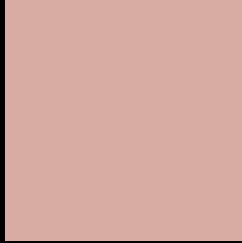
Large Text (above 18pt) WCAG AA × Fail

Any Text WCAG AA × Fail

Large Text (above 18pt) WCAG AAA × Fail

Any Text WCAG AAA × Fail

# Black Background



This preview shows how the Hex color D9ACA3 looks on a black background.

## Color Contrast Check

Large Text (above 18pt) WCAG AA ✓ Pass

Any Text WCAG AA ✓ Pass

Large Text (above 18pt) WCAG AAA ✓ Pass

Any Text WCAG AAA ✓ Pass

If you want to check with other color combinations, try the [Color Contrast Checker](#).



## Hex D9ACA3 Background



This preview shows how black text looks on a background with the Hex color D9ACA3.

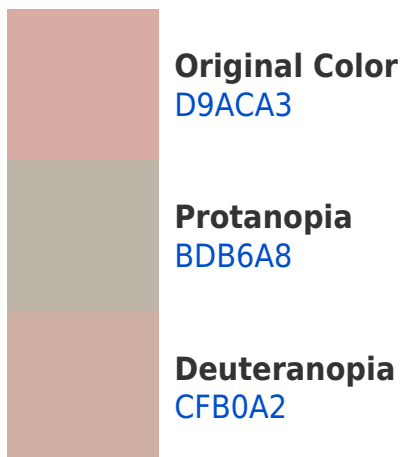


This preview shows how white text looks on a background with the Hex color D9ACA3.

# Color Blindness Simulation

Color vision deficiency is a very complex topic, and I could not describe the different causes any better than Wikipedia does, so if you want to learn more, you should check out their [article about color blindness](#).

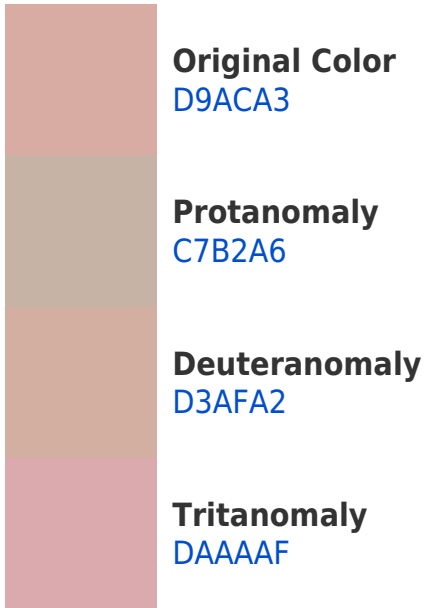
## Dichromacy



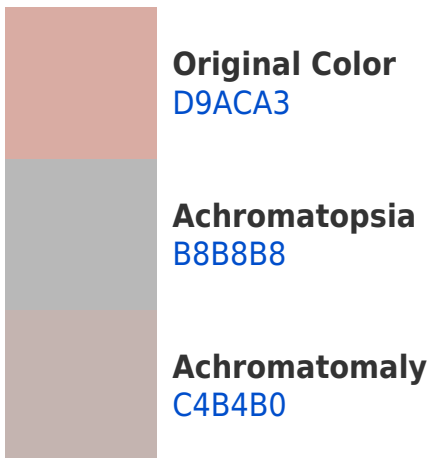


**Tritanopia**  
DBA9B6

# Trichromacy



# Monochromacy



# CSS Examples

## Text

The CSS property to change the color of the text to Hex D9ACA3 is called "color". The color property can be set on classes, ids or directly on the HTML element.

This example shows how text in the color #D9ACA3 looks like.

```
.text, #text, p{  
    color:#D9ACA3  
}
```

If you want to add a text shadow in that color use the text-shadow property, you can generate a text shadow directly with our [CSS Text Shadow Generator](#).

Here you see how black text with a 4 pixel #D9ACA3 colored shadow looks like.

```
.shadow{ text-shadow: 4px 4px 2px #D9ACA3  
}
```

## Border

The CSS property to change the border of an element to Hex D9ACA3 is called "border". The border property can be set on classes, ids or directly on the HTML element.

This example shows the color as border, it can be applied via the CSS property "border" or "border-color".

```
.border, #border, table{ border:4px solid  
#D9ACA3 }
```

If only the border color should be changed use the property `border-color`.

```
.border{ border-color:#D9ACA3 }
```

If you want to add a box shadow in that color use:

Here you see how a box with a 4 pixel #D9ACA3 colored shadow looks like.

```
.boxshadow{ -moz-box-shadow:4px 4px 4px  
4px #D9ACA3; -webkit-box-shadow:4px 4px  
4px 4px #D9ACA3; box-shadow:4px 4px 4px  
4px #D9ACA3 }
```

# Background

The CSS property to change the background color of an element to Hex D9ACA3 is called "background". The background property can be set on classes, ids or directly on the HTML element.

```
.background, #background, body{  
background:#D9ACA3 }
```

If only the background color should be changed can be used:

```
.background{ background-color:#D9ACA3 }
```

This example shows the color as background, it is applied via the CSS property "background".

To optimize and compress your CSS code, you can use our [online CSS compressor and optimizer](#) based on csstidy. If you want to create a linear or radial gradient as background or border, check our [CSS Gradient Generator](#).



Hey! You found this booklet interesting? Support Converting Colors with the new Membership Option!

The pro membership hides all ads, plus gives you double the colors in the color bucket, and more awesome pro features!

**[Learn more, Memberships starting at \\$2.50/m!](#)**

**Follow me  
on Twitter!**

@ConvertingColor