

Converting Colors

Hex(D9B193)

Have a look what the booklet for
Hex(D9B193) contains.

Hex(D9B193)	3
<i>Conversions</i>	4
<i>Details</i>	6
<i>Harmonies</i>	11
<i>Previews</i>	23
<i>Color Blindness Simulation</i>	26
<i>CSS Examples</i>	29

Color

Hex(D9B193)

Conversions

Conversions Part 1

Format	Color
Hex	D9B193
RGB	217, 177, 147
RGB Percent	85%, 69%, 58%
CMY	0.1490, 0.3059, 0.4235
CMYK	0.00, 0.18, 0.32, 0.15
HSL	26°, 48%, 71%
HSV	26°, 32%, 85%
XYZ	49.6039, 48.3026, 34.3127
YIQ	185.5400, 33.4700, -0.8500

Conversions

Conversions Part 2

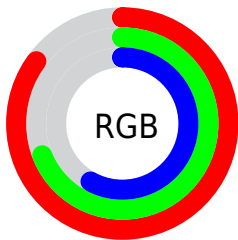
Format	Color
RYB	217, 200, 147
Decimal	14266771
CIELab	75.02, 10.25, 20.82
CIELCh	75, 23.209, 63.788
Yxy	48.3026, 0.3752, 0.3653
Android (android.graphics.Color)	4292456851 (0xFFD9B193)
YUV	185.5400, -19.0002, 27.5904
Hunter-Lab	69.5001, 5.7747, 19.3781

Details

The Hex color **D9B193** is a light color, and the websafe version is hex **FFCC99**. A complement of this color would be **93BBD9**, and the grayscale version is **BABABA**.

A 20% lighter version of the original color is **FFE9C9**, and **A17C60** is the 20% darker color. If you saturate the color by 10%, you get **D9A57D**, and if you desaturate by 10%, it is **D9BDA9**.

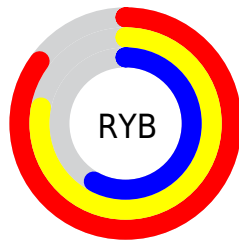
Distribution



Red (85%)

Green (69%)

Blue (58%)



Red (85%)

Yellow (78%)

Blue (58%)

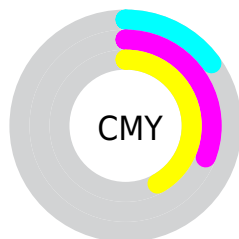


Cyan (0%)

Magenta (18%)

Yellow (32%)

Black (15%)



Cyan (15%)

Magenta (31%)

Yellow (42%)

Brightness & Saturation Gradients

These gradients show how the Hex color D9B193 changes by changing the brightness by 10 percent. The first figure shows a shift by +10% for each color and the second figure -10%.

Similar to the brightness gradients but the following saturation gradients show a change of the Hex color D9B193 by changing the saturation by 10% instead.

 D9B193

 D9B193

FFFFFF

 BD9679

 FFE9C9

 A17C60

 FFFFE5

 866348

 6C4C32

 52351C

 3A1F04

 230900

 000000

 D9B193

 D9B193

 D9A57D

 D9BDA9

 D99868

 D9CABE

 D98C52

 D9D6D4

 D97F3C

 D9E3EA

 D97326

 D9EFFF

 D96711

 D9FBFF

 D95D00

 D9FFFF

Harmonies

Analogous

The Analogous color harmony consists of three colors that are next to each other on the color wheel.



E4ABA2



D9B193



C6B88E

Triad

The Triadic color harmony groups three colors that are evenly spaced from another and form a triangle on the color wheel.



D9B193



83C5BB



C0B2DC

Complementary

The Complementary color scheme is a pair of colors which are on the opposite of each other on the color wheel.



D9B193



93BBD9

Split Complementary

Split-complementary colors differ from the complementary color scheme. The scheme consists of three colors, the original color and two neighbors of the complement color.



A3BAE3



D9B193



7DC4D0

Square

The Square scheme is like the rectangle color scheme, but the four colors are evenly spaced on the color wheel.



D9B193



96C3A5



89C0DE



D7ACCC

Rectangle

The Rectangle color scheme consists of four colors that form a rectangle on the color wheel.



D9B193



B7BD91



89C0DE



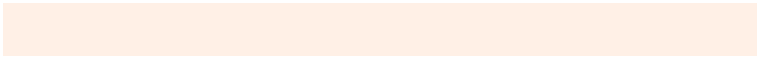
B6B5E0

Sweetspot

The Sweet Spot groups the original color and five complimentary colors.



D9B193



FFF0E6



D993BC



807770



000000



808080

Same Dimension

The Same Dimension uses a secret algorithm to generate beautiful new colors.



D9B193



FFC69C



D9D393



6E6763



AD4A00



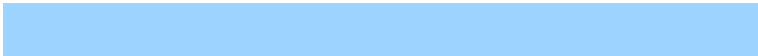
2E1400

Inverse Universe

The Inverse Universe completely reimagines the original color for something new.



93BBD9



9CD4FF



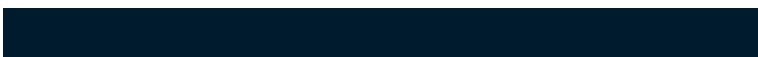
9399D9



63696E



0063AD



001A2E

Previews

White Background



This preview shows how the Hex color D9B193 looks on a white background.

Color Contrast Check

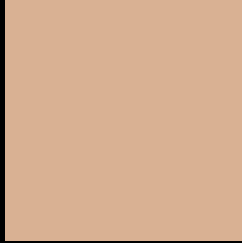
Large Text (above 18pt) WCAG AA × Fail

Any Text WCAG AA × Fail

Large Text (above 18pt) WCAG AAA × Fail

Any Text WCAG AAA × Fail

Black Background



This preview shows how the Hex color D9B193 looks on a black background.

Color Contrast Check

Large Text (above 18pt) WCAG AA ✓ Pass

Any Text WCAG AA ✓ Pass

Large Text (above 18pt) WCAG AAA ✓ Pass

Any Text WCAG AAA ✓ Pass

If you want to check with other color combinations, try the [Color Contrast Checker](#).

Hex D9B193 Background



This preview shows how black text looks on a background with the Hex color D9B193.



This preview shows how white text looks on a background with the Hex color D9B193.

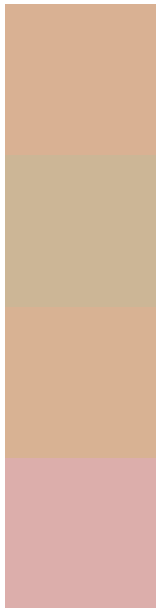
Color Blindness Simulation

Color vision deficiency is a very complex topic, and I could not describe the different causes any better than Wikipedia does, so if you want to learn more, you should check out their [article about color blindness](#).

Dichromacy



Trichromacy



Original Color
D9B193

Protanomaly
CCB696

Deuteranomaly
D8B293

Tritanomaly
DCAEAB

Monochromacy



Original Color
D9B193

Achromatopsia
BABABA

Achromatomaly
C5B7AC

CSS Examples

Text

The CSS property to change the color of the text to Hex D9B193 is called "color". The color property can be set on classes, ids or directly on the HTML element.

This example shows how text in the color #D9B193 looks like.

```
.text, #text, p{  
    color:#D9B193  
}
```

If you want to add a text shadow in that color use the text-shadow property, you can generate a text shadow directly with our [CSS Text Shadow Generator](#).

Here you see how black text with a 4 pixel #D9B193 colored shadow looks like.

```
.shadow{ text-shadow: 4px 4px 2px #D9B193
}
```

Border

The CSS property to change the border of an element to Hex D9B193 is called "border". The border property can be set on classes, ids or directly on the HTML element.

This example shows the color as border, it can be applied via the CSS property "border" or "border-color".

```
.border, #border, table{ border:4px solid
#D9B193 }
```

If only the border color should be changed use the property `border-color`.

```
.border{ border-color:#D9B193 }
```

If you want to add a box shadow in that color use:

Here you see how a box with a 4 pixel #D9B193 colored shadow looks like.

```
.boxshadow{ -moz-box-shadow:4px 4px 4px  
4px #D9B193; -webkit-box-shadow:4px 4px  
4px 4px #D9B193; box-shadow:4px 4px 4px  
4px #D9B193 }
```

Background

The CSS property to change the background color of an element to Hex D9B193 is called "background". The background property can be set on classes, ids or directly on the HTML element.

```
.background, #background, body{  
background:#D9B193 }
```

If only the background color should be changed can be used:

```
.background{ background-color:#D9B193 }
```

This example shows the color as background, it is applied via the CSS property "background".

To optimize and compress your CSS code, you can use our [online CSS compressor and optimizer](#) based on csstidy. If you want to create a linear or radial gradient as background or border, check our [CSS Gradient Generator](#).

Hey! You found this booklet interesting? Support Converting Colors with the new Membership Option!

The pro membership hides all ads, plus gives you double the colors in the color bucket, and more awesome pro features!

[Learn more, Memberships starting at \\$2.50/m!](#)

**Follow me
on Twitter!**

@ConvertingColor