

# Converting Colors

Hex(D9B295)

Have a look what the booklet for  
Hex(D9B295) contains.

<b>Hex(D9B295)</b> .....	3
<b><i>Conversions</i></b> .....	4
<b><i>Details</i></b> .....	6
<b><i>Harmonies</i></b> .....	11
<b><i>Previews</i></b> .....	23
<b><i>Color Blindness Simulation</i></b> .....	26
<b><i>CSS Examples</i></b> .....	29

# **Color**

**Hex(D9B295)**

# Conversions

## Conversions Part 1

Format	Color
Hex	D9B295
RGB	217, 178, 149
RGB Percent	85%, 70%, 58%
CMY	0.1490, 0.3020, 0.4157
CMYK	0.00, 0.18, 0.31, 0.15
HSL	26°, 47%, 72%
HSV	26°, 31%, 85%
XYZ	49.9605, 48.7624, 35.2127
YIQ	186.3550, 32.5530, -0.7510

# Conversions

## Conversions Part 2

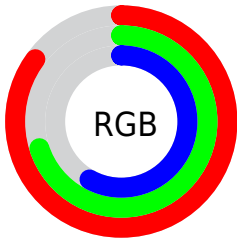
<b>Format</b>	<b>Color</b>
<b>R<sub>YB</sub></b>	217, 200, 149
Decimal	14267029
CIE <sub>Lab</sub>	75.30, 9.97, 20.14
CIE <sub>LCh</sub>	75, 22.473, 63.656
Yxy	48.7624, 0.3730, 0.3641
Android (android.graphics.Color)	4292457109 (0xFFD9B295)
YUV	186.3550, -18.4160, 26.8757
Hunter-Lab	69.8301, 5.5065, 18.9834

# Details

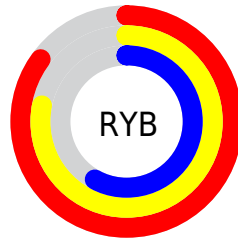
The Hex color **D9B295** is a light color, and the websafe version is hex **FFCC99**. A complement of this color would be **95BCD9**, and the grayscale version is **BBBBBB**.

A 20% lighter version of the original color is **FFEACB**, and **A17D62** is the 20% darker color. If you saturate the color by 10%, you get **D9A67F**, and if you desaturate by 10%, it is **D9BEAB**.

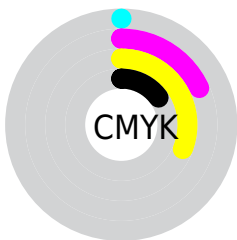
# Distribution



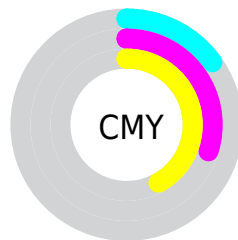
- Red (85%)
- Green (70%)
- Blue (58%)



- Red (85%)
- Yellow (78%)
- Blue (58%)



- Cyan (0%)
- Magenta (18%)
- Yellow (31%)
- Black (15%)



- Cyan (15%)
- Magenta (30%)
- Yellow (42%)

# Brightness & Saturation Gradients

These gradients show how the Hex color D9B295 changes by changing the brightness by 10 percent. The first figure shows a shift by +10% for each color and the second figure -10%.

Similar to the brightness gradients but the following saturation gradients show a change of the Hex color D9B295 by changing the saturation by 10% instead.



 D9B295

 D9B295

FFFFFF

 BD977B

 FFEACB

 A17D62

 FFFFFE7

 86644A

 6C4C33

 52361E

 3A2006

 230B00

 000000

 D9B295

 D9B295

 D9A67F

 D9BEAB

 D9996A

 D9CBC0

 D98D54

 D9D7D6

 D9803E

 D9E4EC

 D97429

 D9F0FF

 D96713

 D9FDFE

 D95D00

 D9FFFF

# Harmonies

## Analogous

The Analogous color harmony consists of three colors that are next to each other on the color wheel.



E3ADA3



D9B295



C7B990

# Triad

The Triadic color harmony groups three colors that are evenly spaced from another and form a triangle on the color wheel.



D9B295



86C5BB



C0B3DC

# Complementary

The Complementary color scheme is a pair of colors which are on the opposite of each other on the color wheel.



D9B295



95BCD9

# Split Complementary

Split-complementary colors differ from the complementary color scheme. The scheme consists of three colors, the original color and two neighbors of the complement color.



A5BAE2



D9B295



80C4D0

# Square

The Square scheme is like the rectangle color scheme, but the four colors are evenly spaced on the color wheel.



D9B295



98C4A6



8CC1DE



D7ADCC

# Rectangle

The Rectangle color scheme consists of four colors that form a rectangle on the color wheel.



D9B295



B8BD93



8CC1DE



B7B6DF

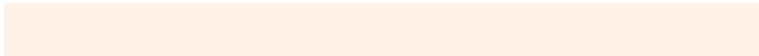


# Sweetspot

The Sweet Spot groups the original color and five complimentary colors.



D9B295



FFF2E8



D995BD



807771



000000



808080



# Same Dimension

The Same Dimension uses a secret algorithm to generate beautiful new colors.



D9B295



FFC79E



D9D395



6E6763



AD4A00



2E1400

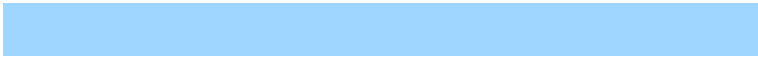


# Inverse Universe

The Inverse Universe completely reimagines the original color for something new.



95BCD9



9ED6FF



959BD9



63696E



0063AD



001A2E



# Previews

## White Background



This preview shows how the Hex color D9B295 looks on a white background.

## Color Contrast Check

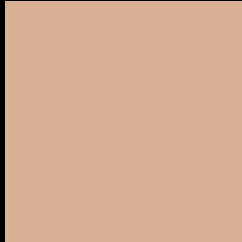
Large Text (above 18pt) WCAG AA × Fail

Any Text WCAG AA × Fail

Large Text (above 18pt) WCAG AAA × Fail

Any Text WCAG AAA × Fail

# Black Background



This preview shows how the Hex color D9B295 looks on a black background.

## Color Contrast Check

Large Text (above 18pt) WCAG AA ✓ Pass

Any Text WCAG AA ✓ Pass

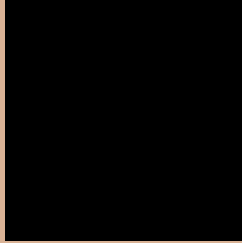
Large Text (above 18pt) WCAG AAA ✓ Pass

Any Text WCAG AAA ✓ Pass

If you want to check with other color combinations, try the [Color Contrast Checker](#).



## Hex D9B295 Background



This preview shows how black text looks on a background with the Hex color D9B295.



This preview shows how white text looks on a background with the Hex color D9B295.

# Color Blindness Simulation

Color vision deficiency is a very complex topic, and I could not describe the different causes any better than Wikipedia does, so if you want to learn more, you should check out their [article about color blindness](#).

## Dichromacy



**Original Color**  
D9B295

**Protanopia**  
C4B998

**Deuteranopia**  
D8B295



# Trichromacy



**Original Color**  
D9B295

**Protanomaly**  
CCB697

**Deuteranomaly**  
D8B295

**Tritanomaly**  
DCAFAD

# Monochromacy



**Original Color**  
D9B295

**Achromatopsia**  
BABABA

**Achromatomaly**  
C5B7AD

# CSS Examples

## Text

The CSS property to change the color of the text to Hex D9B295 is called "color". The color property can be set on classes, ids or directly on the HTML element.

This example shows how text in the color #D9B295 looks like.

```
.text, #text, p{  
  color:#D9B295  
}
```

If you want to add a text shadow in that color use the text-shadow property, you can generate a text shadow directly with our [CSS Text Shadow Generator](#).

Here you see how black text with a 4 pixel #D9B295 colored shadow looks like.

```
.shadow{ text-shadow: 4px 4px 2px #D9B295
}
```

## Border

The CSS property to change the border of an element to Hex D9B295 is called "border". The border property can be set on classes, ids or directly on the HTML element.

This example shows the color as border, it can be applied via the CSS property "border" or "border-color".

```
.border, #border, table{ border:4px solid
#D9B295 }
```

If only the border color should be changed use the property `border-color`.

```
.border{ border-color:#D9B295 }
```

If you want to add a box shadow in that color use:

Here you see how a box with a 4 pixel #D9B295 colored shadow looks like.

```
.boxshadow{ -moz-box-shadow:4px 4px 4px  
4px #D9B295; -webkit-box-shadow:4px 4px  
4px 4px #D9B295; box-shadow:4px 4px 4px  
4px #D9B295 }
```

# Background

The CSS property to change the background color of an element to Hex D9B295 is called "background". The background property can be set on classes, ids or directly on the HTML element.

```
.background, #background, body{  
background:#D9B295 }
```

If only the background color should be changed can be used:

```
.background{ background-color:#D9B295 }
```

This example shows the color as background, it is applied via the CSS property "background".

To optimize and compress your CSS code, you can use our [online CSS compressor and optimizer](#) based on csstidy. If you want to create a linear or radial gradient as background or border, check our [CSS Gradient Generator](#).



Hey! You found this booklet interesting? Support Converting Colors with the new Membership Option!

The pro membership hides all ads, plus gives you double the colors in the color bucket, and more awesome pro features!

**[Learn more, Memberships starting at \\$2.50/m!](#)**

**Follow me  
on Twitter!**

@ConvertingColor