

Converting Colors

Hex(D9B7A1)

Have a look what the booklet for
Hex(D9B7A1) contains.

Hex(D9B7A1)	3
<i>Conversions</i>	4
<i>Details</i>	6
<i>Harmonies</i>	11
<i>Previews</i>	23
<i>Color Blindness Simulation</i>	26
<i>CSS Examples</i>	29

Color

Hex(D9B7A1)

Conversions

Conversions Part 1

Format	Color
Hex	D9B7A1
RGB	217, 183, 161
RGB Percent	85%, 72%, 63%
CMY	0.1490, 0.2824, 0.3686
CMYK	0.00, 0.16, 0.26, 0.15
HSL	24°, 42%, 74%
HSV	24°, 26%, 85%
XYZ	51.9818, 51.1919, 40.8595
YIQ	190.6580, 27.3260, 0.3660

Conversions

Conversions Part 2

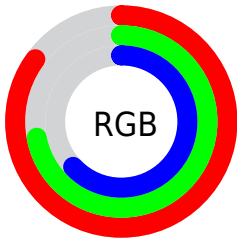
Format	Color
R _Y B	217, 197, 161
Decimal	14268321
CIE Lab	76.80, 8.91, 15.73
CIE LCh	77, 18.082, 60.470
Yxy	51.1919, 0.3609, 0.3554
Android (android.graphics.Color)	4292458401 (0xFFD9B7A1)
YUV	190.6580, -14.6214, 23.1019
Hunter-Lab	71.5485, 4.4748, 16.2250

Details

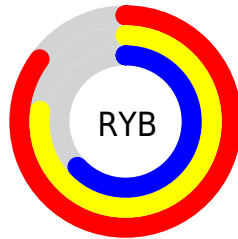
The Hex color **D9B7A1** is a light color, and the websafe version is hex **CC9999**. A complement of this color would be **A1C3D9**, and the grayscale version is **BFBFBF**.

A 20% lighter version of the original color is **FFEFD8**, and **A1826D** is the 20% darker color. If you saturate the color by 10%, you get **D9AA8B**, and if you desaturate by 10%, it is **D9C4B7**.

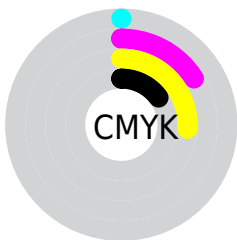
Distribution



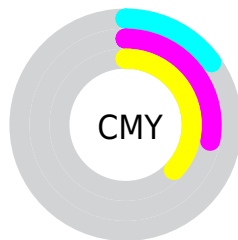
- Red (85%)
- Green (72%)
- Blue (63%)



- Red (85%)
- Yellow (77%)
- Blue (63%)



- Cyan (0%)
- Magenta (16%)
- Yellow (26%)
- Black (15%)



- Cyan (15%)
- Magenta (28%)
- Yellow (37%)

Brightness & Saturation Gradients

These gradients show how the Hex color D9B7A1 changes by changing the brightness by 10 percent. The first figure shows a shift by +10% for each color and the second figure -10%.

Similar to the brightness gradients but the following saturation gradients show a change of the Hex color D9B7A1 by changing the saturation by 10% instead.

 D9B7A1

FFFFFF

 FFEFD8

 FFFFF4

 D9B7A1

 BD9C87

 A1826D

 876955

 6D513E

 543A28

 3B2413

 251000

 000000

 D9B7A1

 D9B7A1

 D9AA8B

 D9C4B7

 D99D76

 D9D1CC

 D98F60

 D9DFE2

 D9824A

 D9ECF8

 D97534

 D9F9FF

 D9681F

 D9FFFF

 D95B09

 D95500

Harmonies

Analogous

The Analogous color harmony consists of three colors that are next to each other on the color wheel.



E0B3AD



D9B7A1



CBBC9C

Triad

The Triadic color harmony groups three colors that are evenly spaced from another and form a triangle on the color wheel.



D9B7A1



96C7BD



C1B9DA

Complementary

The Complementary color scheme is a pair of colors which are on the opposite of each other on the color wheel.



D9B7A1



A1C3D9

Split Complementary

Split-complementary colors differ from the complementary color scheme. The scheme consists of three colors, the original color and two neighbors of the complement color.



ABBFDF



D9B7A1



91C7CE

Square

The Square scheme is like the rectangle color scheme, but the four colors are evenly spaced on the color wheel.



D9B7A1



A5C6AD



99C4DA



D4B4CE

Rectangle

The Rectangle color scheme consists of four colors that form a rectangle on the color wheel.



D9B7A1



BEC09E



99C4DA



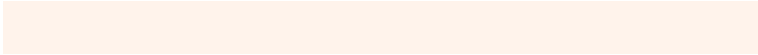
BABBDD

Sweetspot

The Sweet Spot groups the original color and five complimentary colors.



D9B7A1



FFF3EB



D9A1C4



807873



000000



808080

Same Dimension

The Same Dimension uses a secret algorithm to generate beautiful new colors.



D9B7A1



FFCFB0



D9D2A1



6E6763



AD4400



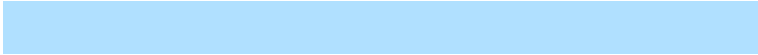
2E1200

Inverse Universe

The Inverse Universe completely reimagines the original color for something new.



A1C3D9



B0E0FF



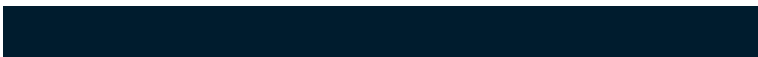
A1A8D9



63696E



0069AD



001C2E

Previews

White Background



This preview shows how the Hex color D9B7A1 looks on a white background.

Color Contrast Check

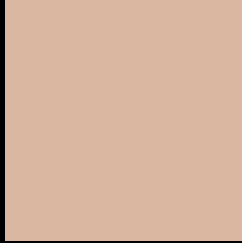
Large Text (above 18pt) WCAG AA × Fail

Any Text WCAG AA × Fail

Large Text (above 18pt) WCAG AAA × Fail

Any Text WCAG AAA × Fail

Black Background



This preview shows how the Hex color D9B7A1 looks on a black background.

Color Contrast Check

Large Text (above 18pt) WCAG AA ✓ Pass

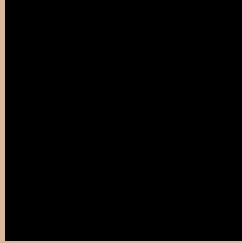
Any Text WCAG AA ✓ Pass

Large Text (above 18pt) WCAG AAA ✓ Pass

Any Text WCAG AAA ✓ Pass

If you want to check with other color combinations, try the [Color Contrast Checker](#).

Hex D9B7A1 Background



This preview shows how black text looks on a background with the Hex color D9B7A1.



This preview shows how white text looks on a background with the Hex color D9B7A1.

Color Blindness Simulation

Color vision deficiency is a very complex topic, and I could not describe the different causes any better than Wikipedia does, so if you want to learn more, you should check out their [article about color blindness](#).

Dichromacy

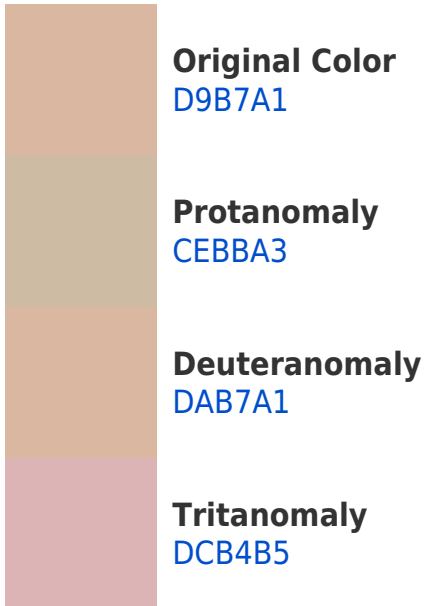


Original Color
D9B7A1

Protanopia
C7BDA4

Deuteranopia
DAB7A1

Trichromacy



Monochromacy



CSS Examples

Text

The CSS property to change the color of the text to Hex D9B7A1 is called "color". The color property can be set on classes, ids or directly on the HTML element.

This example shows how text in the color #D9B7A1 looks like.

```
.text, #text, p{  
    color:#D9B7A1  
}
```

If you want to add a text shadow in that color use the text-shadow property, you can generate a text shadow directly with our [CSS Text Shadow Generator](#).

Here you see how black text with a 4 pixel #D9B7A1 colored shadow looks like.

```
.shadow{ text-shadow: 4px 4px 2px #D9B7A1
}
```

Border

The CSS property to change the border of an element to Hex D9B7A1 is called "border". The border property can be set on classes, ids or directly on the HTML element.

This example shows the color as border, it can be applied via the CSS property "border" or "border-color".

```
.border, #border, table{ border:4px solid
#D9B7A1 }
```

If only the border color should be changed use the property `border-color`.

```
.border{ border-color:#D9B7A1 }
```

If you want to add a box shadow in that color use:

Here you see how a box with a 4 pixel #D9B7A1 colored shadow looks like.

```
.boxshadow{ -moz-box-shadow:4px 4px 4px  
4px #D9B7A1; -webkit-box-shadow:4px 4px  
4px 4px #D9B7A1; box-shadow:4px 4px 4px  
4px #D9B7A1 }
```

Background

The CSS property to change the background color of an element to Hex D9B7A1 is called "background". The background property can be set on classes, ids or directly on the HTML element.

```
.background, #background, body{  
background:#D9B7A1 }
```

If only the background color should be changed can be used:

```
.background{ background-color:#D9B7A1 }
```

This example shows the color as background, it is applied via the CSS property "background".

To optimize and compress your CSS code, you can use our [online CSS compressor and optimizer](#) based on csstidy. If you want to create a linear or radial gradient as background or border, check our [CSS Gradient Generator](#).

Hey! You found this booklet interesting? Support Converting Colors with the new Membership Option!

The pro membership hides all ads, plus gives you double the colors in the color bucket, and more awesome pro features!

[Learn more, Memberships starting at \\$2.50/m!](#)

**Follow me
on Twitter!**

@ConvertingColor