

# Converting Colors

Hex(D9B7A8)

Have a look what the booklet for  
Hex(D9B7A8) contains.

<b>Hex(D9B7A8)</b> .....	3
<b><i>Conversions</i></b> .....	4
<b><i>Details</i></b> .....	6
<b><i>Harmonies</i></b> .....	11
<b><i>Previews</i></b> .....	23
<b><i>Color Blindness Simulation</i></b> .....	26
<b><i>CSS Examples</i></b> .....	29

# **Color**

**Hex(D9B7A8)**

# Conversions

## Conversions Part 1

Format	Color
Hex	D9B7A8
RGB	217, 183, 168
RGB Percent	85%, 72%, 66%
CMY	0.1490, 0.2824, 0.3412
CMYK	0.00, 0.16, 0.23, 0.15
HSL	18°, 39%, 75%
HSV	18°, 23%, 85%
XYZ	52.6166, 51.4458, 44.2026
YIQ	191.4560, 25.0790, 2.5430

# Conversions

## Conversions Part 2

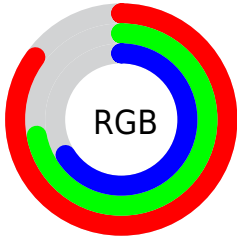
Format	Color
R <sub>Y</sub> B	217, 190, 168
Decimal	14268328
CIE Lab	76.95, 9.91, 12.17
CIE LCh	77, 15.691, 50.835
Yxy	51.4458, 0.3549, 0.3470
Android (android.graphics.Color)	4292458408 (0xFFD9B7A8)
YUV	191.4560, -11.5638, 22.4021
Hunter-Lab	71.7258, 5.4241, 13.6692

# Details

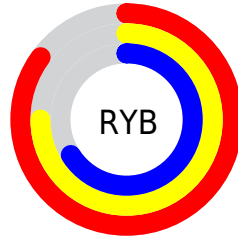
The Hex color **D9B7A8** is a light color, and the websafe version is hex **FFCCCC**. A complement of this color would be **A8CAD9**, and the grayscale version is **C0C0C0**.

A 20% lighter version of the original color is **FFEFDF**, and **A28274** is the 20% darker color. If you saturate the color by 10%, you get **D9A892**, and if you desaturate by 10%, it is **D9C6BE**.

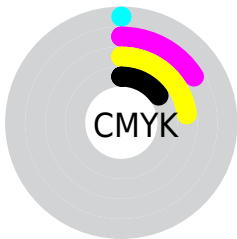
# Distribution



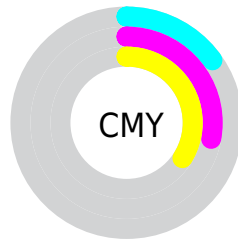
- Red (85%)
- Green (72%)
- Blue (66%)



- Red (85%)
- Yellow (75%)
- Blue (66%)



- Cyan (0%)
- Magenta (16%)
- Yellow (23%)
- Black (15%)



- Cyan (15%)
- Magenta (28%)
- Yellow (34%)

# Brightness & Saturation Gradients

These gradients show how the Hex color D9B7A8 changes by changing the brightness by 10 percent. The first figure shows a shift by +10% for each color and the second figure -10%.

Similar to the brightness gradients but the following saturation gradients show a change of the Hex color D9B7A8 by changing the saturation by 10% instead.



 D9B7A8

FFFFFF

 FFEFDF

FFFFFFC

 D9B7A8

 BD9C8E

 A28274

 87695B

 6D5144

 543A2E

 3C2419

 270F00

 000000

 D9B7A8

 D9B7A8

 D9A892

 D9C6BE

 D9997D

 D9D5D3

 D98A67

 D9E4E9

 D97B51

 D9F3FF

 D96C3B

 D9FFFF

 D95D26

 D94E10

 D94200

# Harmonies

## Analogous

The Analogous color harmony consists of three colors that are next to each other on the color wheel.



DDB4B4



D9B7A8



CEBBA2

# Triad

The Triadic color harmony groups three colors that are evenly spaced from another and form a triangle on the color wheel.



D9B7A8



A0C6B9



BBBCD9

# Complementary

The Complementary color scheme is a pair of colors which are on the opposite of each other on the color wheel.



D9B7A8



A8CAD9

# Split Complementary

Split-complementary colors differ from the complementary color scheme. The scheme consists of three colors, the original color and two neighbors of the complement color.



A9C1DA



D9B7A8



99C6C8

# Square

The Square scheme is like the rectangle color scheme, but the four colors are evenly spaced on the color wheel.



D9B7A8



AEC4AB



9CC4D4



CDB7D0

# Rectangle

The Rectangle color scheme consists of four colors that form a rectangle on the color wheel.



D9B7A8



C4BFA2



9CC4D4



B5BDDA

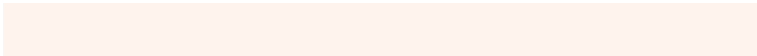


# Sweetspot

The Sweet Spot groups the original color and five complimentary colors.



D9B7A8



FFF3ED



D9A8CA



807875



000000



808080



# Same Dimension

The Same Dimension uses a secret algorithm to generate beautiful new colors.



D9B7A8



FFCFBA



D9CFA8



6E6663



AD3500



2E0E00

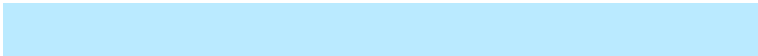


# Inverse Universe

The Inverse Universe completely reimagines the original color for something new.



A8CAD9



BAEAFB



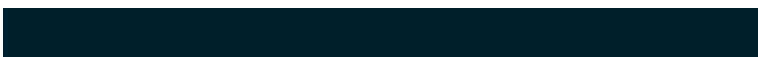
A8B2D9



636A6E



0078AD



00202E



# Previews

## White Background



This preview shows how the Hex color D9B7A8 looks on a white background.

## Color Contrast Check

Large Text (above 18pt) WCAG AA × Fail

Any Text WCAG AA × Fail

Large Text (above 18pt) WCAG AAA × Fail

Any Text WCAG AAA × Fail

# Black Background



This preview shows how the Hex color D9B7A8 looks on a black background.

## Color Contrast Check

Large Text (above 18pt) WCAG AA ✓ Pass

Any Text WCAG AA ✓ Pass

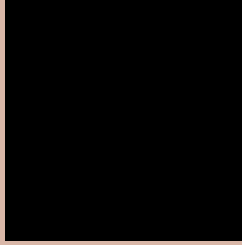
Large Text (above 18pt) WCAG AAA ✓ Pass

Any Text WCAG AAA ✓ Pass

If you want to check with other color combinations, try the [Color Contrast Checker](#).



## Hex D9B7A8 Background



This preview shows how black text looks on a background with the Hex color D9B7A8.

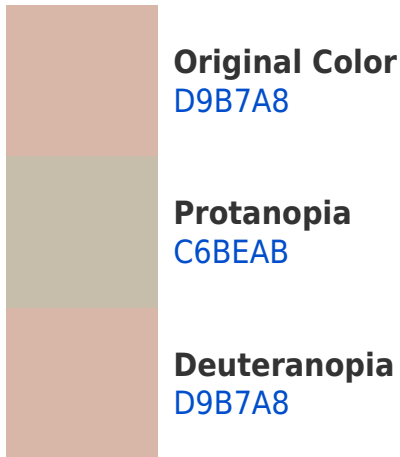


This preview shows how white text looks on a background with the Hex color D9B7A8.

# Color Blindness Simulation

Color vision deficiency is a very complex topic, and I could not describe the different causes any better than Wikipedia does, so if you want to learn more, you should check out their [article about color blindness](#).

## Dichromacy





**Tritanopia**  
DCB3C1

# Trichromacy



**Original Color**  
D9B7A8

**Protanomaly**  
CDBBAA

**Deuteranomaly**  
D9B7A8

**Tritanomaly**  
DBB4B8

# Monochromacy



**Original Color**  
D9B7A8

**Achromatopsia**  
BFBFBF

**Achromatomaly**  
C8BCB7

# CSS Examples

## Text

The CSS property to change the color of the text to Hex D9B7A8 is called "color". The color property can be set on classes, ids or directly on the HTML element.

This example shows how text in the color #D9B7A8 looks like.

```
.text, #text, p{  
    color:#D9B7A8  
}
```

If you want to add a text shadow in that color use the text-shadow property, you can generate a text shadow directly with our [CSS Text Shadow Generator](#).

Here you see how black text with a 4 pixel #D9B7A8 colored shadow looks like.

```
.shadow{ text-shadow: 4px 4px 2px #D9B7A8
}
```

## Border

The CSS property to change the border of an element to Hex D9B7A8 is called "border". The border property can be set on classes, ids or directly on the HTML element.

This example shows the color as border, it can be applied via the CSS property "border" or "border-color".

```
.border, #border, table{ border:4px solid
#D9B7A8 }
```

If only the border color should be changed use the property `border-color`.

```
.border{ border-color:#D9B7A8 }
```

If you want to add a box shadow in that color use:

Here you see how a box with a 4 pixel #D9B7A8 colored shadow looks like.

```
.boxshadow{ -moz-box-shadow:4px 4px 4px  
4px #D9B7A8; -webkit-box-shadow:4px 4px  
4px 4px #D9B7A8; box-shadow:4px 4px 4px  
4px #D9B7A8 }
```

# Background

The CSS property to change the background color of an element to Hex D9B7A8 is called "background". The background property can be set on classes, ids or directly on the HTML element.

```
.background, #background, body{  
background:#D9B7A8 }
```

If only the background color should be changed can be used:

```
.background{ background-color:#D9B7A8 }
```

This example shows the color as background, it is applied via the CSS property "background".

To optimize and compress your CSS code, you can use our [online CSS compressor and optimizer](#) based on csstidy. If you want to create a linear or radial gradient as background or border, check our [CSS Gradient Generator](#).



Hey! You found this booklet interesting? Support Converting Colors with the new Membership Option!

The pro membership hides all ads, plus gives you double the colors in the color bucket, and more awesome pro features!

**[Learn more, Memberships starting at \\$2.50/m!](#)**

**Follow me  
on Twitter!**

@ConvertingColor