

Converting Colors

Hex(D9B898)

Have a look what the booklet for
Hex(D9B898) contains.

Hex(D9B898)	3
<i>Conversions</i>	4
<i>Details</i>	6
<i>Harmonies</i>	11
<i>Previews</i>	23
<i>Color Blindness Simulation</i>	26
<i>CSS Examples</i>	29

Color

Hex(D9B898)

Conversions

Conversions Part 1

Format	Color
Hex	D9B898
RGB	217, 184, 152
RGB Percent	85%, 72%, 60%
CMY	0.1490, 0.2784, 0.4039
CMYK	0.00, 0.15, 0.30, 0.15
HSL	30°, 46%, 72%
HSV	30°, 30%, 85%
XYZ	51.4233, 51.2997, 36.8973
YIQ	190.2190, 29.9400, -2.9560

Conversions

Conversions Part 2

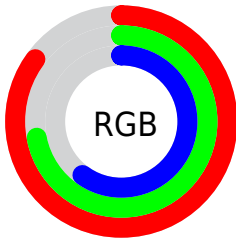
Format	Color
RYB	217, 215, 152
Decimal	14268568
CIELab	76.86, 7.16, 20.67
CIELCh	77, 21.874, 70.888
Yxy	51.2997, 0.3683, 0.3674
Android (android.graphics.Color)	4292458648 (0xFFD9B898)
YUV	190.2190, -18.8420, 23.4869
Hunter-Lab	71.6238, 2.8148, 19.5932

Details

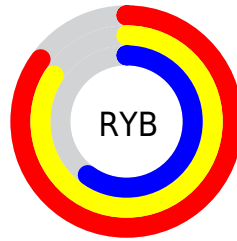
The Hex color **D9B898** is a light color, and the websafe version is hex **FFCC99**. A complement of this color would be **98B9D9**, and the grayscale version is **BEBEBE**.

A 20% lighter version of the original color is **FFF0CE**, and **A18365** is the 20% darker color. If you saturate the color by 10%, you get **D9AD82**, and if you desaturate by 10%, it is **D9C3AE**.

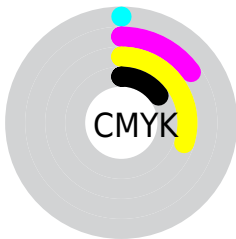
Distribution



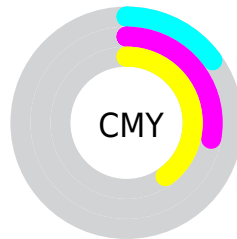
- Red (85%)
- Green (72%)
- Blue (60%)



- Red (85%)
- Yellow (84%)
- Blue (60%)



- Cyan (0%)
- Magenta (15%)
- Yellow (30%)
- Black (15%)



- Cyan (15%)
- Magenta (28%)
- Yellow (40%)

Brightness & Saturation Gradients

These gradients show how the Hex color D9B898 changes by changing the brightness by 10 percent. The first figure shows a shift by +10% for each color and the second figure -10%.

Similar to the brightness gradients but the following saturation gradients show a change of the Hex color D9B898 by changing the saturation by 10% instead.

 D9B898

 D9B898

FFFFFF

 BD9D7E

 FFF0CE

 A18365

 FFFFEB

 866A4D

 6C5236

 533B20

 3B250A

 241100

 000000

 D9B898

 D9B898

 D9AD82

 D9C3AE

 D9A26D

 D9CEC3

 D99757

 D9D9D9

 D98C41

 D9E4EF

 D9812B

 D9EFFF

 D97616

 D9FAFF

 D96B00

 D9FFFF

Harmonies

Analogous

The Analogous color harmony consists of three colors that are next to each other on the color wheel.



E5B2A4



D9B898



C6BF96

Triad

The Triadic color harmony groups three colors that are evenly spaced from another and form a triangle on the color wheel.



D9B898



89C9C5



CAB6DC

Complementary

The Complementary color scheme is a pair of colors which are on the opposite of each other on the color wheel.



D9B898



98B9D9

Split Complementary

Split-complementary colors differ from the complementary color scheme. The scheme consists of three colors, the original color and two neighbors of the complement color.



B0BDE5



D9B898



87C8D7

Square

The Square scheme is like the rectangle color scheme, but the four colors are evenly spaced on the color wheel.



D9B898



99C8B0



97C3E3



DEB1CB

Rectangle

The Rectangle color scheme consists of four colors that form a rectangle on the color wheel.



D9B898



B6C39B



97C3E3



C2B8E0

Sweetspot

The Sweet Spot groups the original color and five complimentary colors.



D9B898



FFF3E8



D998BA



807871



000000



808080

Same Dimension

The Same Dimension uses a secret algorithm to generate beautiful new colors.



D9B898



FFD0A3



D9D898



6E6863



AD5500



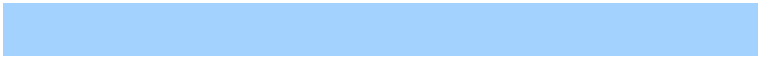
2E1700

Inverse Universe

The Inverse Universe completely reimagines the original color for something new.



98B9D9



A3D2FF



9899D9



63686E



0058AD



00172E

Previews

White Background



This preview shows how the Hex color D9B898 looks on a white background.

Color Contrast Check

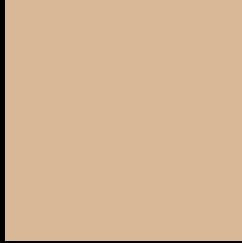
Large Text (above 18pt) WCAG AA × Fail

Any Text WCAG AA × Fail

Large Text (above 18pt) WCAG AAA × Fail

Any Text WCAG AAA × Fail

Black Background



This preview shows how the Hex color D9B898 looks on a black background.

Color Contrast Check

Large Text (above 18pt) WCAG AA ✓ Pass

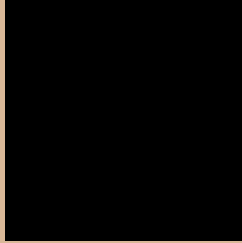
Any Text WCAG AA ✓ Pass

Large Text (above 18pt) WCAG AAA ✓ Pass

Any Text WCAG AAA ✓ Pass

If you want to check with other color combinations, try the [Color Contrast Checker](#).

Hex D9B898 Background



This preview shows how black text looks on a background with the Hex color D9B898.



This preview shows how white text looks on a background with the Hex color D9B898.

Color Blindness Simulation

Color vision deficiency is a very complex topic, and I could not describe the different causes any better than Wikipedia does, so if you want to learn more, you should check out their [article about color blindness](#).

Dichromacy





Tritanopia
DEB2C0

Trichromacy



Monochromacy



CSS Examples

Text

The CSS property to change the color of the text to Hex D9B898 is called "color". The color property can be set on classes, ids or directly on the HTML element.

This example shows how text in the color #D9B898 looks like.

```
.text, #text, p{  
    color:#D9B898  
}
```

If you want to add a text shadow in that color use the text-shadow property, you can generate a text shadow directly with our [CSS Text Shadow Generator](#).

Here you see how black text with a 4 pixel #D9B898 colored shadow looks like.

```
.shadow{ text-shadow: 4px 4px 2px #D9B898
}
```

Border

The CSS property to change the border of an element to Hex D9B898 is called "border". The border property can be set on classes, ids or directly on the HTML element.

This example shows the color as border, it can be applied via the CSS property "border" or "border-color".

```
.border, #border, table{ border:4px solid
#D9B898 }
```

If only the border color should be changed use the property `border-color`.

```
.border{ border-color:#D9B898 }
```

If you want to add a box shadow in that color use:

Here you see how a box with a 4 pixel #D9B898 colored shadow looks like.

```
.boxshadow{ -moz-box-shadow:4px 4px 4px  
4px #D9B898; -webkit-box-shadow:4px 4px  
4px 4px #D9B898; box-shadow:4px 4px 4px  
4px #D9B898 }
```

Background

The CSS property to change the background color of an element to Hex D9B898 is called "background". The background property can be set on classes, ids or directly on the HTML element.

```
.background, #background, body{  
background:#D9B898 }
```

If only the background color should be changed can be used:

```
.background{ background-color:#D9B898 }
```

This example shows the color as background, it is applied via the CSS property "background".

To optimize and compress your CSS code, you can use our [online CSS compressor and optimizer](#) based on csstidy. If you want to create a linear or radial gradient as background or border, check our [CSS Gradient Generator](#).

Hey! You found this booklet interesting? Support Converting Colors with the new Membership Option!

The pro membership hides all ads, plus gives you double the colors in the color bucket, and more awesome pro features!

[Learn more, Memberships starting at \\$2.50/m!](#)

**Follow me
on Twitter!**

@ConvertingColor