

Converting Colors

Hex(D9B992)

Have a look what the booklet for
Hex(D9B992) contains.

Hex(D9B992)	3
<i>Conversions</i>	4
<i>Details</i>	6
<i>Harmonies</i>	11
<i>Previews</i>	23
<i>Color Blindness Simulation</i>	26
<i>CSS Examples</i>	29

Color

Hex(D9B992)

Conversions

Conversions Part 1

Format	Color
Hex	D9B992
RGB	217, 185, 146
RGB Percent	85%, 73%, 57%
CMY	0.1490, 0.2745, 0.4275
CMYK	0.00, 0.15, 0.33, 0.15
HSL	33°, 48%, 71%
HSV	33°, 33%, 85%
XYZ	51.1525, 51.5250, 34.4434
YIQ	190.1220, 31.5910, -5.3450

Conversions

Conversions Part 2

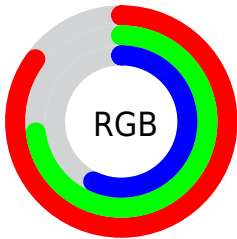
Format	Color
RYB	204, 217, 146
Decimal	14268818
CIELab	77.00, 5.86, 24.06
CIELCh	77, 24.767, 76.313
Yxy	51.5250, 0.3730, 0.3758
Android (android.graphics.Color)	4292458898 (0xFFD9B992)
YUV	190.1220, -21.7521, 23.5720
Hunter-Lab	71.7809, 1.5862, 21.7969

Details

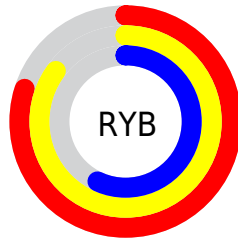
The Hex color **D9B992** is a light color, and the websafe version is hex **FFCC99**. A complement of this color would be **92B2D9**, and the grayscale version is **BEBEBE**.

A 20% lighter version of the original color is **FFF1C8**, and **A1845F** is the 20% darker color. If you saturate the color by 10%, you get **D9AF7C**, and if you desaturate by 10%, it is **D9C3A8**.

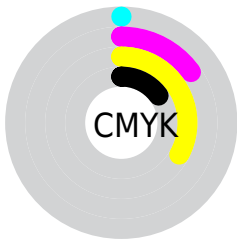
Distribution



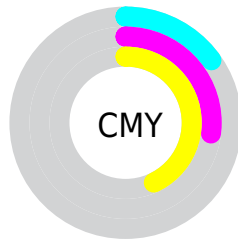
- Red (85%)
- Green (73%)
- Blue (57%)



- Red (80%)
- Yellow (85%)
- Blue (57%)



- Cyan (0%)
- Magenta (15%)
- Yellow (33%)
- Black (15%)



- Cyan (15%)
- Magenta (27%)
- Yellow (43%)

Brightness & Saturation Gradients

These gradients show how the Hex color D9B992 changes by changing the brightness by 10 percent. The first figure shows a shift by +10% for each color and the second figure -10%.

Similar to the brightness gradients but the following saturation gradients show a change of the Hex color D9B992 by changing the saturation by 10% instead.

 D9B992

 D9B992

FFFFFF

 BD9E78

 FFF1C8

 A1845F

 FFFFE4

 866B47

 6C5330

 523C1A

 3A2602

 231200

 000000

 D9B992

 D9B992

 D9AF7C

 D9C3A8

 D9A567

 D9CDBD

 D99C51

 D9D6D3

 D9923B

 D9E0E9

 D98825

 D9EAFE

 D97E10

 D9F4FF

 D97700

 D9FDFF

 D9FFFF

Harmonies

Analogous

The Analogous color harmony consists of three colors that are next to each other on the color wheel.



E9B29E



D9B992



C2C192

Triad

The Triadic color harmony groups three colors that are evenly spaced from another and form a triangle on the color wheel.



D9B992



7FCBCA



D1B4DE

Complementary

The Complementary color scheme is a pair of colors which are on the opposite of each other on the color wheel.



D9B992



92B2D9

Split Complementary

Split-complementary colors differ from the complementary color scheme. The scheme consists of three colors, the original color and two neighbors of the complement color.



B4BCEA



D9B992



80C9DE

Square

The Square scheme is like the rectangle color scheme, but the four colors are evenly spaced on the color wheel.



D9B992



8FCAB2



95C3EA



E5AFCA

Rectangle

The Rectangle color scheme consists of four colors that form a rectangle on the color wheel.



D9B992



B1C599



95C3EA



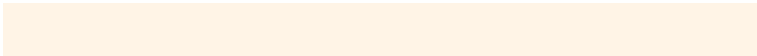
C8B7E3

Sweetspot

The Sweet Spot groups the original color and five complimentary colors.



D9B992



FFF4E6



D992B3



807970



000000



808080

Same Dimension

The Same Dimension uses a secret algorithm to generate beautiful new colors.



D9B992



FFD29C



D7D992



6E6963



AD5F00



2E1900

Inverse Universe

The Inverse Universe completely reimagines the original color for something new.



92B2D9



9CC8FF



9492D9



63686E



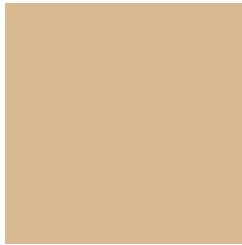
004EAD



00152E

Previews

White Background



This preview shows how the Hex color D9B992 looks on a white background.

Color Contrast Check

Large Text (above 18pt) WCAG AA × Fail

Any Text WCAG AA × Fail

Large Text (above 18pt) WCAG AAA × Fail

Any Text WCAG AAA × Fail

Black Background



This preview shows how the Hex color D9B992 looks on a black background.

Color Contrast Check

Large Text (above 18pt) WCAG AA ✓ Pass

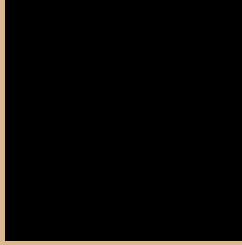
Any Text WCAG AA ✓ Pass

Large Text (above 18pt) WCAG AAA ✓ Pass

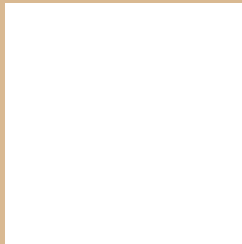
Any Text WCAG AAA ✓ Pass

If you want to check with other color combinations, try the [Color Contrast Checker](#).

Hex D9B992 Background



This preview shows how black text looks on a background with the Hex color D9B992.



This preview shows how white text looks on a background with the Hex color D9B992.

Color Blindness Simulation

Color vision deficiency is a very complex topic, and I could not describe the different causes any better than Wikipedia does, so if you want to learn more, you should check out their [article about color blindness](#).

Dichromacy



Original Color
D9B992

Protanopia
CBBE94

Deuteranopia
DFB792



Tritanopia
DEB3C1

Trichromacy



Monochromacy



CSS Examples

Text

The CSS property to change the color of the text to Hex D9B992 is called "color". The color property can be set on classes, ids or directly on the HTML element.

This example shows how text in the color #D9B992 looks like.

```
.text, #text, p{  
    color:#D9B992  
}
```

If you want to add a text shadow in that color use the text-shadow property, you can generate a text shadow directly with our [CSS Text Shadow Generator](#).

Here you see how black text with a 4 pixel #D9B992 colored shadow looks like.

```
.shadow{ text-shadow: 4px 4px 2px #D9B992
}
```

Border

The CSS property to change the border of an element to Hex D9B992 is called "border". The border property can be set on classes, ids or directly on the HTML element.

This example shows the color as border, it can be applied via the CSS property "border" or "border-color".

```
.border, #border, table{ border:4px solid
#D9B992 }
```

If only the border color should be changed use the property `border-color`.

```
.border{ border-color:#D9B992 }
```

If you want to add a box shadow in that color use:

Here you see how a box with a 4 pixel #D9B992 colored shadow looks like.

```
.boxshadow{ -moz-box-shadow:4px 4px 4px  
4px #D9B992; -webkit-box-shadow:4px 4px  
4px 4px #D9B992; box-shadow:4px 4px 4px  
4px #D9B992 }
```

Background

The CSS property to change the background color of an element to Hex D9B992 is called "background". The background property can be set on classes, ids or directly on the HTML element.

```
.background, #background, body{  
background:#D9B992 }
```

If only the background color should be changed can be used:

```
.background{ background-color:#D9B992 }
```

This example shows the color as background, it is applied via the CSS property "background".

To optimize and compress your CSS code, you can use our [online CSS compressor and optimizer](#) based on csstidy. If you want to create a linear or radial gradient as background or border, check our [CSS Gradient Generator](#).

Hey! You found this booklet interesting? Support Converting Colors with the new Membership Option!

The pro membership hides all ads, plus gives you double the colors in the color bucket, and more awesome pro features!

[Learn more, Memberships starting at \\$2.50/m!](#)

**Follow me
on Twitter!**

@ConvertingColor