

Converting Colors

Hex(D9B9B8)

Have a look what the booklet for
Hex(D9B9B8) contains.

Hex(D9B9B8)	3
<i>Conversions</i>	4
<i>Details</i>	6
<i>Harmonies</i>	11
<i>Previews</i>	23
<i>Color Blindness Simulation</i>	26
<i>CSS Examples</i>	29

Color

Hex(D9B9B8)

Conversions

Conversions Part 1

Format	Color
Hex	D9B9B8
RGB	217, 185, 184
RGB Percent	85%, 73%, 72%
CMY	0.1490, 0.2745, 0.2784
CMYK	0.00, 0.15, 0.15, 0.15
HSL	2°, 30%, 79%
HSV	2°, 15%, 85%
XYZ	54.6160, 52.9103, 52.6815
YIQ	194.4540, 19.3930, 6.4730

Conversions

Conversions Part 2

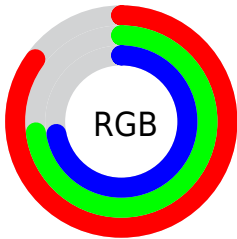
Format	Color
R _Y B	217, 185, 184
Decimal	14268856
CIE Lab	77.82, 11.28, 4.75
CIE LCh	78, 12.239, 22.843
Yxy	52.9103, 0.3409, 0.3303
Android (android.graphics.Color)	4292458936 (0xFFD9B9B8)
YUV	194.4540, -5.1538, 19.7728
Hunter-Lab	72.7395, 6.7314, 7.9769

Details

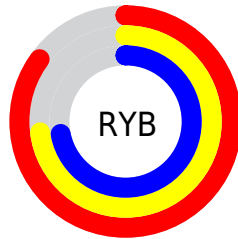
The Hex color **D9B9B8** is a light color, and the websafe version is hex **FFCCCC**. A complement of this color would be **B8D8D9**, and the grayscale version is **C2C2C2**.

A 20% lighter version of the original color is **FFF1F0**, and **A28483** is the 20% darker color. If you saturate the color by 10%, you get **D9A4A2**, and if you desaturate by 10%, it is **D9CECE**.

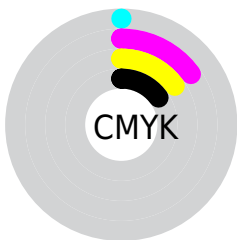
Distribution



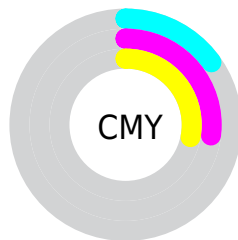
- Red (85%)
- Green (73%)
- Blue (72%)



- Red (85%)
- Yellow (73%)
- Blue (72%)



- Cyan (0%)
- Magenta (15%)
- Yellow (15%)
- Black (15%)



- Cyan (15%)
- Magenta (27%)
- Yellow (28%)

Brightness & Saturation Gradients

These gradients show how the Hex color D9B9B8 changes by changing the brightness by 10 percent. The first figure shows a shift by +10% for each color and the second figure -10%.

Similar to the brightness gradients but the following saturation gradients show a change of the Hex color D9B9B8 by changing the saturation by 10% instead.

 D9B9B8

 D9B9B8

FFFFFF

 BD9E9D

 FFF1F0

 A28483

 876B6A

 6E5252

 553B3B

 3D2525

 271110

 050000

 000000

 D9B9B8

 D9B9B8

 D9A4A2

 D9CECE

 D98F8D

 D9E3E3

 D97A77

 D9F8F9

 D96561

 D9FFFF

 D9504C

 D93B36

 D92620

 D9110A

 D90700

Harmonies

Analogous

The Analogous color harmony consists of three colors that are next to each other on the color wheel.



D6B9C4



D9B9B8



D6BBAF

Triad

The Triadic color harmony groups three colors that are evenly spaced from another and form a triangle on the color wheel.



D9B9B8



B3C5B2



B1C2D7

Complementary

The Complementary color scheme is a pair of colors which are on the opposite of each other on the color wheel.



D9B9B8



B8D8D9

Split Complementary

Split-complementary colors differ from the complementary color scheme. The scheme consists of three colors, the original color and two neighbors of the complement color.



A7C5D2



D9B9B8



A9C7BD

Square

The Square scheme is like the rectangle color scheme, but the four colors are evenly spaced on the color wheel.



D9B9B8



C0C2AB



A4C7C9



BFBED5

Rectangle

The Rectangle color scheme consists of four colors that form a rectangle on the color wheel.



D9B9B8



D0BDAB



A4C7C9



ADC3D6

Sweetspot

The Sweet Spot groups the original color and five complimentary colors.



D9B9B8



FFF3F2



D9B8D8



807878



000000



808080

Same Dimension

The Same Dimension uses a secret algorithm to generate beautiful new colors.



D9B9B8



FFD2D1



D9C9B8



6E6363



AD0500



2E0100

Inverse Universe

The Inverse Universe completely reimagines the original color for something new.



B8D8D9



D1FEFF



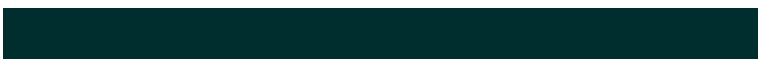
B8C8D9



636D6E



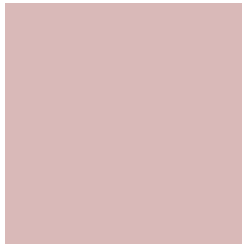
00A8AD



002D2E

Previews

White Background



This preview shows how the Hex color D9B9B8 looks on a white background.

Color Contrast Check

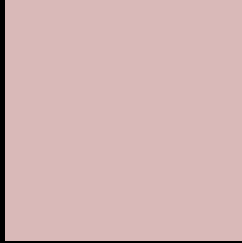
Large Text (above 18pt) WCAG AA × Fail

Any Text WCAG AA × Fail

Large Text (above 18pt) WCAG AAA × Fail

Any Text WCAG AAA × Fail

Black Background



This preview shows how the Hex color D9B9B8 looks on a black background.

Color Contrast Check

Large Text (above 18pt) WCAG AA ✓ Pass

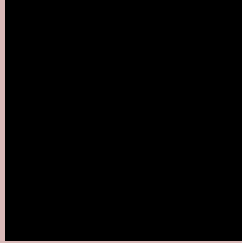
Any Text WCAG AA ✓ Pass

Large Text (above 18pt) WCAG AAA ✓ Pass

Any Text WCAG AAA ✓ Pass

If you want to check with other color combinations, try the [Color Contrast Checker](#).

Hex D9B9B8 Background



This preview shows how black text looks on a background with the Hex color D9B9B8.

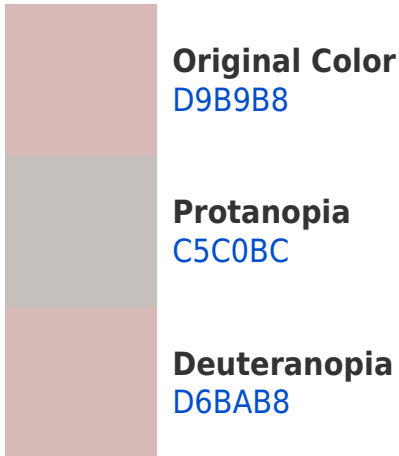


This preview shows how white text looks on a background with the Hex color D9B9B8.

Color Blindness Simulation

Color vision deficiency is a very complex topic, and I could not describe the different causes any better than Wikipedia does, so if you want to learn more, you should check out their [article about color blindness](#).

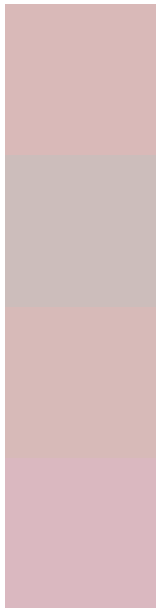
Dichromacy





Tritanopia
DBB7C5

Trichromacy



Original Color
D9B9B8

Protanomaly
CCBDBB

Deuteranomaly
D7BAB8

Tritanomaly
DAB8C0

Monochromacy



Original Color
D9B9B8

Achromatopsia
C2C2C2

Achromatomaly
CABFBE

CSS Examples

Text

The CSS property to change the color of the text to Hex D9B9B8 is called "color". The color property can be set on classes, ids or directly on the HTML element.

This example shows how text in the color #D9B9B8 looks like.

```
.text, #text, p{  
  color:#D9B9B8  
}
```

If you want to add a text shadow in that color use the text-shadow property, you can generate a text shadow directly with our [CSS Text Shadow Generator](#).

Here you see how black text with a 4 pixel #D9B9B8 colored shadow looks like.

```
.shadow{ text-shadow: 4px 4px 2px #D9B9B8
}
```

Border

The CSS property to change the border of an element to Hex D9B9B8 is called "border". The border property can be set on classes, ids or directly on the HTML element.

This example shows the color as border, it can be applied via the CSS property "border" or "border-color".

```
.border, #border, table{ border:4px solid
#D9B9B8 }
```

If only the border color should be changed use the property `border-color`.

```
.border{ border-color:#D9B9B8 }
```

If you want to add a box shadow in that color use:

Here you see how a box with a 4 pixel #D9B9B8 colored shadow looks like.

```
.boxshadow{ -moz-box-shadow:4px 4px 4px  
4px #D9B9B8; -webkit-box-shadow:4px 4px  
4px 4px #D9B9B8; box-shadow:4px 4px 4px  
4px #D9B9B8 }
```

Background

The CSS property to change the background color of an element to Hex D9B9B8 is called "background". The background property can be set on classes, ids or directly on the HTML element.

```
.background, #background, body{  
background:#D9B9B8 }
```

If only the background color should be changed can be used:

```
.background{ background-color:#D9B9B8 }
```

This example shows the color as background, it is applied via the CSS property "background".

To optimize and compress your CSS code, you can use our [online CSS compressor and optimizer](#) based on csstidy. If you want to create a linear or radial gradient as background or border, check our [CSS Gradient Generator](#).

Hey! You found this booklet interesting? Support Converting Colors with the new Membership Option!

The pro membership hides all ads, plus gives you double the colors in the color bucket, and more awesome pro features!

[Learn more, Memberships starting at \\$2.50/m!](#)

**Follow me
on Twitter!**

@ConvertingColor