

Converting Colors

Hex(D9B9C1)

Have a look what the booklet for
Hex(D9B9C1) contains.

Hex(D9B9C1)	3
<i>Conversions</i>	4
<i>Details</i>	6
<i>Harmonies</i>	11
<i>Previews</i>	23
<i>Color Blindness Simulation</i>	26
<i>CSS Examples</i>	29

Color

Hex(D9B9C1)

Conversions

Conversions Part 1

Format	Color
Hex	D9B9C1
RGB	217, 185, 193
RGB Percent	85%, 73%, 76%
CMY	0.1490, 0.2745, 0.2431
CMYK	0.00, 0.15, 0.11, 0.15
HSL	345°, 30%, 79%
HSV	345°, 15%, 85%
XYZ	55.5899, 53.2999, 57.8101
YIQ	195.4800, 16.5040, 9.2720

Conversions

Conversions Part 2

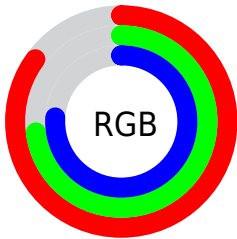
Format	Color
R _Y B	217, 185, 193
Decimal	14268865
CIE Lab	78.05, 12.75, 0.21
CIE LCh	78, 12.747, 0.941
Yxy	53.2999, 0.3335, 0.3197
Android (android.graphics.Color)	4292458945 (0xFFD9B9C1)
YUV	195.4800, -1.2226, 18.8730
Hunter-Lab	73.0068, 8.1542, 4.1562

Details

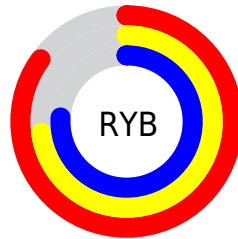
The Hex color **D9B9C1** is a light color, and the websafe version is hex **FFCCCC**. A complement of this color would be **B9D9D1**, and the grayscale version is **C3C3C3**.

A 20% lighter version of the original color is **FFF1F9**, and **A2848C** is the 20% darker color. If you saturate the color by 10%, you get **D9A3B1**, and if you desaturate by 10%, it is **D9CFD1**.

Distribution



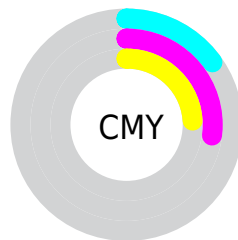
- Red (85%)
- Green (73%)
- Blue (76%)



- Red (85%)
- Yellow (73%)
- Blue (76%)



- Cyan (0%)
- Magenta (15%)
- Yellow (11%)
- Black (15%)



- Cyan (15%)
- Magenta (27%)
- Yellow (24%)

Brightness & Saturation Gradients

These gradients show how the Hex color D9B9C1 changes by changing the brightness by 10 percent. The first figure shows a shift by +10% for each color and the second figure -10%.

Similar to the brightness gradients but the following saturation gradients show a change of the Hex color D9B9C1 by changing the saturation by 10% instead.

 D9B9C1

FFFFFF

 FFF1F9

 D9B9C1

 BD9EA6

 A2848C

 876B72

 6E525A

 553B42

 3E252C

 271118

 0B0000

 000000

 D9B9C1

 D9B9C1

 D9A3B1

 D9CFD1

 D98EA0

 D9E4E2

 D97890

 D9FAF2

 D96280

 D9FFFF

 D94D70

 D9375F

 D9214F

 D90B3F

 D90036

Harmonies

Analogous

The Analogous color harmony consists of three colors that are next to each other on the color wheel.



D1BBCD



D9B9C1



DABAB5

Triad

The Triadic color harmony groups three colors that are evenly spaced from another and form a triangle on the color wheel.



D9B9C1



BDC4AD



A9C5D5

Complementary

The Complementary color scheme is a pair of colors which are on the opposite of each other on the color wheel.



D9B9C1



B9D9D1

Split Complementary

Split-complementary colors differ from the complementary color scheme. The scheme consists of three colors, the original color and two neighbors of the complement color.



A3C8CD



D9B9C1



B0C7B5

Square

The Square scheme is like the rectangle color scheme, but the four colors are evenly spaced on the color wheel.



D9B9C1



CAC0A9



A6C8C1



B5C2D8

Rectangle

The Rectangle color scheme consists of four colors that form a rectangle on the color wheel.



D9B9C1



D7BBAF



A6C8C1



A6C6D3

Sweetspot

The Sweet Spot groups the original color and five complimentary colors.



D9B9C1



FFF5F7



D1B9D9



80797B



000000



808080

Same Dimension

The Same Dimension uses a secret algorithm to generate beautiful new colors.



D9B9C1



FFD1DD



D9C1B9



6E6365



AD002B



2E000B

Inverse Universe

The Inverse Universe completely reimagines the original color for something new.



D9B9C1



FFD1DD



B9D1D9



6E6365



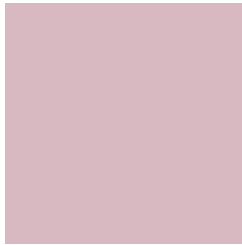
AD002B



2E000B

Previews

White Background



This preview shows how the Hex color D9B9C1 looks on a white background.

Color Contrast Check

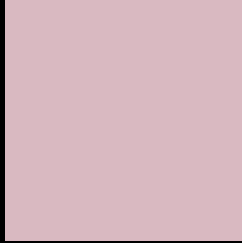
Large Text (above 18pt) WCAG AA × Fail

Any Text WCAG AA × Fail

Large Text (above 18pt) WCAG AAA × Fail

Any Text WCAG AAA × Fail

Black Background



This preview shows how the Hex color D9B9C1 looks on a black background.

Color Contrast Check

Large Text (above 18pt) WCAG AA ✓ Pass

Any Text WCAG AA ✓ Pass

Large Text (above 18pt) WCAG AAA ✓ Pass

Any Text WCAG AAA ✓ Pass

If you want to check with other color combinations, try the [Color Contrast Checker](#).

Hex D9B9C1 Background



This preview shows how black text looks on a background with the Hex color D9B9C1.

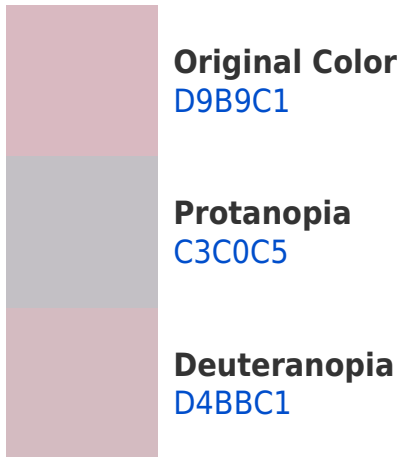


This preview shows how white text looks on a background with the Hex color D9B9C1.

Color Blindness Simulation

Color vision deficiency is a very complex topic, and I could not describe the different causes any better than Wikipedia does, so if you want to learn more, you should check out their [article about color blindness](#).

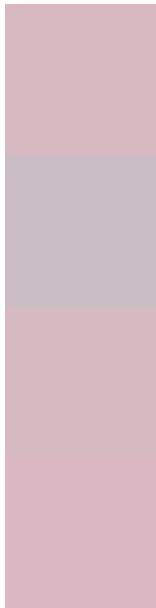
Dichromacy





Tritanopia
DAB8C6

Trichromacy



Original Color
D9B9C1

Protanomaly
CBBDC4

Deuteranomaly
D6BAC1

Tritanomaly
DAB8C4

Monochromacy



Original Color
D9B9C1

Achromatopsia
C3C3C3

Achromatomaly
CBBFC2

CSS Examples

Text

The CSS property to change the color of the text to Hex D9B9C1 is called "color". The color property can be set on classes, ids or directly on the HTML element.

This example shows how text in the color #D9B9C1 looks like.

```
.text, #text, p{  
    color:#D9B9C1  
}
```

If you want to add a text shadow in that color use the text-shadow property, you can generate a text shadow directly with our [CSS Text Shadow Generator](#).

Here you see how black text with a 4 pixel #D9B9C1 colored shadow looks like.

```
.shadow{ text-shadow: 4px 4px 2px #D9B9C1  
}
```

Border

The CSS property to change the border of an element to Hex D9B9C1 is called "border". The border property can be set on classes, ids or directly on the HTML element.

This example shows the color as border, it can be applied via the CSS property "border" or "border-color".

```
.border, #border, table{ border:4px solid  
#D9B9C1 }
```

If only the border color should be changed use the property `border-color`.

```
.border{ border-color:#D9B9C1 }
```

If you want to add a box shadow in that color use:

Here you see how a box with a 4 pixel #D9B9C1 colored shadow looks like.

```
.boxshadow{ -moz-box-shadow:4px 4px 4px  
4px #D9B9C1; -webkit-box-shadow:4px 4px  
4px 4px #D9B9C1; box-shadow:4px 4px 4px  
4px #D9B9C1 }
```

Background

The CSS property to change the background color of an element to Hex D9B9C1 is called "background". The background property can be set on classes, ids or directly on the HTML element.

```
.background, #background, body{  
background:#D9B9C1 }
```

If only the background color should be changed can be used:

```
.background{ background-color:#D9B9C1 }
```

This example shows the color as background, it is applied via the CSS property "background".

To optimize and compress your CSS code, you can use our [online CSS compressor and optimizer](#) based on csstidy. If you want to create a linear or radial gradient as background or border, check our [CSS Gradient Generator](#).

Hey! You found this booklet interesting? Support Converting Colors with the new Membership Option!

The pro membership hides all ads, plus gives you double the colors in the color bucket, and more awesome pro features!

[Learn more, Memberships starting at \\$2.50/m!](#)

**Follow me
on Twitter!**

@ConvertingColor