

# Converting Colors

Hex(D9BB9A)

Have a look what the booklet for  
Hex(D9BB9A) contains.

<b>Hex(D9BB9A)</b> .....	3
<b><i>Conversions</i></b> .....	4
<b><i>Details</i></b> .....	6
<b><i>Harmonies</i></b> .....	11
<b><i>Previews</i></b> .....	23
<b><i>Color Blindness Simulation</i></b> .....	26
<b><i>CSS Examples</i></b> .....	29

# **Color**

**Hex(D9BB9A)**

# Conversions

## Conversions Part 1

Format	Color
Hex	D9BB9A
RGB	217, 187, 154
RGB Percent	85%, 73%, 60%
CMY	0.1490, 0.2667, 0.3961
CMYK	0.00, 0.14, 0.29, 0.15
HSL	31°, 45%, 73%
HSV	31°, 29%, 85%
XYZ	52.2183, 52.6255, 37.9774
YIQ	192.2080, 28.4730, -3.9030

# Conversions

## Conversions Part 2

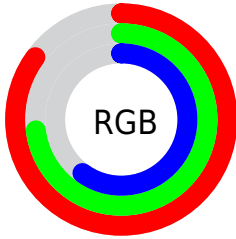
Format	Color
RYB	211, 217, 154
Decimal	14269338
CIELab	77.65, 5.83, 20.69
CIElCh	78, 21.494, 74.256
Yxy	52.6255, 0.3656, 0.3685
Android (android.graphics.Color)	4292459418 (0xFFD9BB9A)
YUV	192.2080, -18.8365, 21.7426
Hunter-Lab	72.5434, 1.5372, 19.7413

# Details

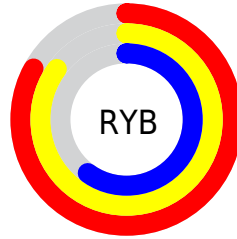
The Hex color **D9BB9A** is a light color, and the websafe version is hex **FFCC99**. A complement of this color would be **9AB8D9**, and the grayscale version is **C0C0C0**.

A 20% lighter version of the original color is **FFF3D1**, and **A18667** is the 20% darker color. If you saturate the color by 10%, you get **D9B184**, and if you desaturate by 10%, it is **D9C5B0**.

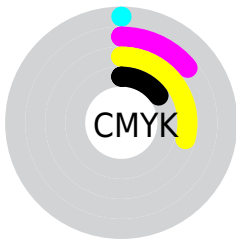
# Distribution



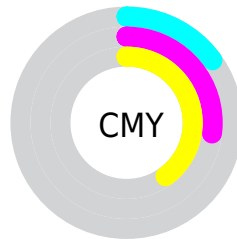
- Red (85%)
- Green (73%)
- Blue (60%)



- Red (83%)
- Yellow (85%)
- Blue (60%)



- Cyan (0%)
- Magenta (14%)
- Yellow (29%)
- Black (15%)



- Cyan (15%)
- Magenta (27%)
- Yellow (40%)

# Brightness & Saturation Gradients

These gradients show how the Hex color D9BB9A changes by changing the brightness by 10 percent. The first figure shows a shift by +10% for each color and the second figure -10%.

Similar to the brightness gradients but the following saturation gradients show a change of the Hex color D9BB9A by changing the saturation by 10% instead.



 D9BB9A

 D9BB9A

FFFFFF

 BDA080

 FFF3D1

 A18667

 FFFFED

 866D4F

 6C5437

 533D22

 3B280C

 241300

 000000

 D9BB9A

 D9BB9A

 D9B184

 D9C5B0

 D9A66F

 D9D0C5

 D99C59

 D9DADB

 D99243

 D9E4F1

 D9872E

 D9EFFF

 D97D18

 D9F9FF

 D97302

 D9FFFF

 D97200

# Harmonies

## Analogous

The Analogous color harmony consists of three colors that are next to each other on the color wheel.



E6B5A5



D9BB9A



C5C299

# Triad

The Triadic color harmony groups three colors that are evenly spaced from another and form a triangle on the color wheel.



D9BB9A



8BCBC9



CFB8DD

# Complementary

The Complementary color scheme is a pair of colors which are on the opposite of each other on the color wheel.



D9BB9A



9AB8D9

# Split Complementary

Split-complementary colors differ from the complementary color scheme. The scheme consists of three colors, the original color and two neighbors of the complement color.



B6BEE6



D9BB9A



8CC9DB

# Square

The Square scheme is like the rectangle color scheme, but the four colors are evenly spaced on the color wheel.



D9BB9A



99CBB4



9CC5E6



E1B3CB

# Rectangle

The Rectangle color scheme consists of four colors that form a rectangle on the color wheel.



D9BB9A



B6C69F



9CC5E6



C7BAE1

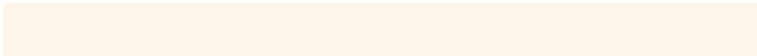


# Sweetspot

The Sweet Spot groups the original color and five complimentary colors.



D9BB9A



FFF4E8



D99AB8



807971



000000



808080



# Same Dimension

The Same Dimension uses a secret algorithm to generate beautiful new colors.



D9BB9A



FFD4A6



D8D99A



6E6863



AD5B00



2E1800

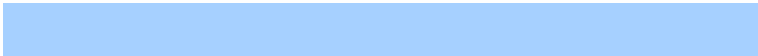


# Inverse Universe

The Inverse Universe completely reimagines the original color for something new.



9AB8D9



A6D0FF



9B9AD9



63686E



0053AD

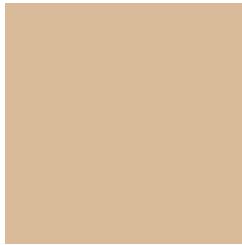


00162E



# Previews

## White Background



This preview shows how the Hex color D9BB9A looks on a white background.

## Color Contrast Check

Large Text (above 18pt) WCAG AA × Fail

Any Text WCAG AA × Fail

Large Text (above 18pt) WCAG AAA × Fail

Any Text WCAG AAA × Fail

# Black Background



This preview shows how the Hex color D9BB9A looks on a black background.

## Color Contrast Check

Large Text (above 18pt) WCAG AA ✓ Pass

Any Text WCAG AA ✓ Pass

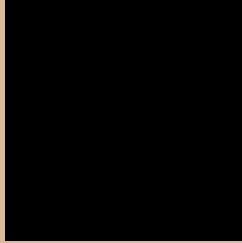
Large Text (above 18pt) WCAG AAA ✓ Pass

Any Text WCAG AAA ✓ Pass

If you want to check with other color combinations, try the [Color Contrast Checker](#).



## Hex D9BB9A Background



This preview shows how black text looks on a background with the Hex color D9BB9A.



This preview shows how white text looks on a background with the Hex color D9BB9A.

# Color Blindness Simulation

Color vision deficiency is a very complex topic, and I could not describe the different causes any better than Wikipedia does, so if you want to learn more, you should check out their [article about color blindness](#).

## Dichromacy



**Original Color**  
D9BB9A

**Protanopia**  
CBC09C

**Deuteranopia**  
DFB89A



**Tritanopia**  
DEB5C3

# Trichromacy



# Monochromacy



# CSS Examples

## Text

The CSS property to change the color of the text to Hex D9BB9A is called "color". The color property can be set on classes, ids or directly on the HTML element.

This example shows how text in the color #D9BB9A looks like.

```
.text, #text, p{  
  color:#D9BB9A  
}
```

If you want to add a text shadow in that color use the text-shadow property, you can generate a text shadow directly with our [CSS Text Shadow Generator](#).

Here you see how black text with a 4 pixel #D9BB9A colored shadow looks like.

```
.shadow{ text-shadow: 4px 4px 2px #D9BB9A
}
```

## Border

The CSS property to change the border of an element to Hex D9BB9A is called "border". The border property can be set on classes, ids or directly on the HTML element.

This example shows the color as border, it can be applied via the CSS property "border" or "border-color".

```
.border, #border, table{ border:4px solid
#D9BB9A }
```

If only the border color should be changed use the property `border-color`.

```
.border{ border-color:#D9BB9A }
```

If you want to add a box shadow in that color use:

Here you see how a box with a 4 pixel #D9BB9A colored shadow looks like.

```
.boxshadow{ -moz-box-shadow:4px 4px 4px  
4px #D9BB9A; -webkit-box-shadow:4px 4px  
4px 4px #D9BB9A; box-shadow:4px 4px 4px  
4px #D9BB9A }
```

# Background

The CSS property to change the background color of an element to Hex D9BB9A is called "background". The background property can be set on classes, ids or directly on the HTML element.

```
.background, #background, body{  
background:#D9BB9A }
```

If only the background color should be changed can be used:

```
.background{ background-color:#D9BB9A }
```

This example shows the color as background, it is applied via the CSS property "background".

To optimize and compress your CSS code, you can use our [online CSS compressor and optimizer](#) based on csstidy. If you want to create a linear or radial gradient as background or border, check our [CSS Gradient Generator](#).



Hey! You found this booklet interesting? Support Converting Colors with the new Membership Option!

The pro membership hides all ads, plus gives you double the colors in the color bucket, and more awesome pro features!

**[Learn more, Memberships starting at \\$2.50/m!](#)**

**Follow me  
on Twitter!**

@ConvertingColor