

# Converting Colors

Hex(D9BBA9)

Have a look what the booklet for  
Hex(D9BBA9) contains.

<b>Hex(D9BBA9)</b> .....	3
<b><i>Conversions</i></b> .....	4
<b><i>Details</i></b> .....	6
<b><i>Harmonies</i></b> .....	11
<b><i>Previews</i></b> .....	23
<b><i>Color Blindness Simulation</i></b> .....	26
<b><i>CSS Examples</i></b> .....	29

# **Color**

**Hex(D9BBA9)**

# Conversions

## Conversions Part 1

Format	Color
Hex	D9BBA9
RGB	217, 187, 169
RGB Percent	85%, 73%, 66%
CMY	0.1490, 0.2667, 0.3373
CMYK	0.00, 0.14, 0.22, 0.15
HSL	22°, 39%, 76%
HSV	22°, 22%, 85%
XYZ	53.5470, 53.1569, 44.9742
YIQ	193.9180, 23.6580, 0.7620

# Conversions

## Conversions Part 2

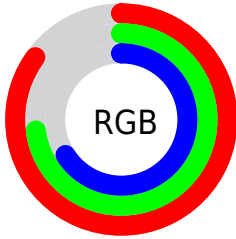
<b>Format</b>	<b>Color</b>
<b>RYB</b>	217, 198, 169
Decimal	14269353
CIELab	77.97, 7.92, 13.07
CIELCh	78, 15.280, 58.772
Yxy	53.1569, 0.3530, 0.3505
Android (android.graphics.Color)	4292459433 (0xFFD9BBA9)
YUV	193.9180, -12.2846, 20.2429
Hunter-Lab	72.9088, 3.5069, 14.4628

# Details

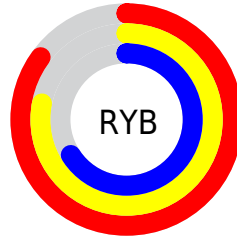
The Hex color **D9BBA9** is a light color, and the websafe version is hex **FFCCCC**. A complement of this color would be **A9C7D9**, and the grayscale version is **C2C2C2**.

A 20% lighter version of the original color is **FFF3E0**, and **A28675** is the 20% darker color. If you saturate the color by 10%, you get **D9AD93**, and if you desaturate by 10%, it is **D9C9BF**.

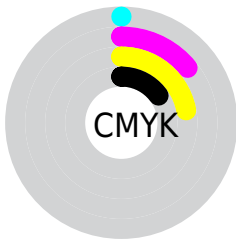
# Distribution



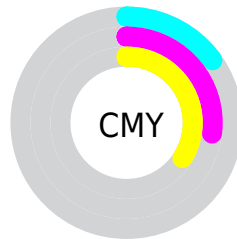
- Red (85%)
- Green (73%)
- Blue (66%)



- Red (85%)
- Yellow (78%)
- Blue (66%)



- Cyan (0%)
- Magenta (14%)
- Yellow (22%)
- Black (15%)



- Cyan (15%)
- Magenta (27%)
- Yellow (34%)

# Brightness & Saturation Gradients

These gradients show how the Hex color D9BBA9 changes by changing the brightness by 10 percent. The first figure shows a shift by +10% for each color and the second figure -10%.

Similar to the brightness gradients but the following saturation gradients show a change of the Hex color D9BBA9 by changing the saturation by 10% instead.





D9BBA9



D9BBA9

FFFFFF



BDA08F



FFF3E0



A28675

FFFFFFD



876D5C



6D5445



543D2E



3C2719



271300



000000



D9BBA9



D9BBA9

 D9AD93

 D9C9BF

 D9A07E

 D9D6D4

 D99268

 D9E4EA

 D98552

 D9F1FF

 D9773D

 D9FFFF

 D96A27

 D95C11

 D95100

# Harmonies

## Analogous

The Analogous color harmony consists of three colors that are next to each other on the color wheel.



DFB8B4



D9BBA9



CDC0A5

# Triad

The Triadic color harmony groups three colors that are evenly spaced from another and form a triangle on the color wheel.



D9BBA9



A1C9C0



C3BDDA

# Complementary

The Complementary color scheme is a pair of colors which are on the opposite of each other on the color wheel.



D9BBA9



A9C7D9

# Split Complementary

Split-complementary colors differ from the complementary color scheme. The scheme consists of three colors, the original color and two neighbors of the complement color.



B1C2DD



D9BBA9



9CC9CE

# Square

The Square scheme is like the rectangle color scheme, but the four colors are evenly spaced on the color wheel.



D9BBA9



ADC7B2



A2C6D8



D3B9D0

# Rectangle

The Rectangle color scheme consists of four colors that form a rectangle on the color wheel.



D9BBA9



C3C3A6



A2C6D8



BDBFDB



# Sweetspot

The Sweet Spot groups the original color and five complimentary colors.



D9BBA9



FFF4ED



D9A9C7



807975



000000



808080



# Same Dimension

The Same Dimension uses a secret algorithm to generate beautiful new colors.



D9BBA9



FFD4BA



D9D3A9



6E6763



AD4100



2E1100

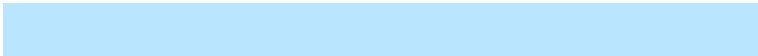


# Inverse Universe

The Inverse Universe completely reimagines the original color for something new.



A9C7D9



BAE5FF



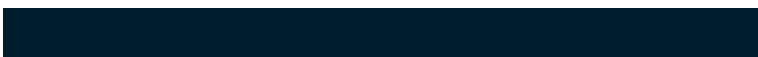
A9AFD9



636A6E



006CAD



001D2E



# Previews

## White Background



This preview shows how the Hex color D9BBA9 looks on a white background.

## Color Contrast Check

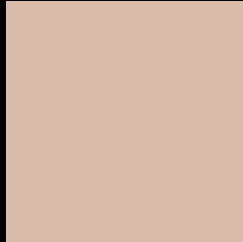
Large Text (above 18pt) WCAG AA × Fail

Any Text WCAG AA × Fail

Large Text (above 18pt) WCAG AAA × Fail

Any Text WCAG AAA × Fail

# Black Background



This preview shows how the Hex color D9BBA9 looks on a black background.

## Color Contrast Check

Large Text (above 18pt) WCAG AA ✓ Pass

Any Text WCAG AA ✓ Pass

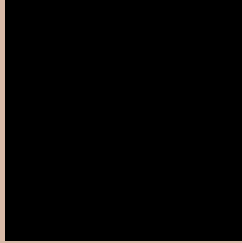
Large Text (above 18pt) WCAG AAA ✓ Pass

Any Text WCAG AAA ✓ Pass

If you want to check with other color combinations, try the [Color Contrast Checker](#).



## Hex D9BBA9 Background



This preview shows how black text looks on a background with the Hex color D9BBA9.



This preview shows how white text looks on a background with the Hex color D9BBA9.

# Color Blindness Simulation

Color vision deficiency is a very complex topic, and I could not describe the different causes any better than Wikipedia does, so if you want to learn more, you should check out their [article about color blindness](#).

## Dichromacy



**Original Color**  
D9BBA9

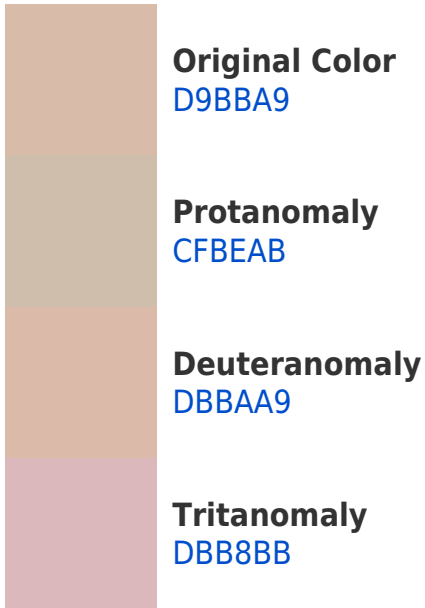
**Protanopia**  
C9C0AC

**Deuteranopia**  
DCBAA9



**Tritanopia**  
DCB7C5

# Trichromacy



# Monochromacy



# CSS Examples

## Text

The CSS property to change the color of the text to Hex D9BBA9 is called "color". The color property can be set on classes, ids or directly on the HTML element.

This example shows how text in the color #D9BBA9 looks like.

```
.text, #text, p{  
    color:#D9BBA9  
}
```

If you want to add a text shadow in that color use the text-shadow property, you can generate a text shadow directly with our [CSS Text Shadow Generator](#).

Here you see how black text with a 4 pixel #D9BBA9 colored shadow looks like.

```
.shadow{ text-shadow: 4px 4px 2px #D9BBA9
}
```

## Border

The CSS property to change the border of an element to Hex D9BBA9 is called "border". The border property can be set on classes, ids or directly on the HTML element.

This example shows the color as border, it can be applied via the CSS property "border" or "border-color".

```
.border, #border, table{ border:4px solid
#D9BBA9 }
```

If only the border color should be changed use the property `border-color`.

```
.border{ border-color:#D9BBA9 }
```

If you want to add a box shadow in that color use:

Here you see how a box with a 4 pixel #D9BBA9 colored shadow looks like.

```
.boxshadow{ -moz-box-shadow:4px 4px 4px  
4px #D9BBA9; -webkit-box-shadow:4px 4px  
4px 4px #D9BBA9; box-shadow:4px 4px 4px  
4px #D9BBA9 }
```

# Background

The CSS property to change the background color of an element to Hex D9BBA9 is called "background". The background property can be set on classes, ids or directly on the HTML element.

```
.background, #background, body{  
background:#D9BBA9 }
```

If only the background color should be changed can be used:

```
.background{ background-color:#D9BBA9 }
```

This example shows the color as background, it is applied via the CSS property "background".

To optimize and compress your CSS code, you can use our [online CSS compressor and optimizer](#) based on csstidy. If you want to create a linear or radial gradient as background or border, check our [CSS Gradient Generator](#).



Hey! You found this booklet interesting? Support Converting Colors with the new Membership Option!

The pro membership hides all ads, plus gives you double the colors in the color bucket, and more awesome pro features!

**[Learn more, Memberships starting at \\$2.50/m!](#)**

**Follow me  
on Twitter!**

@ConvertingColor