

Converting Colors

Hex(D9BFB1)

Have a look what the booklet for
Hex(D9BFB1) contains.

Hex(D9BFB1)	3
<i>Conversions</i>	4
<i>Details</i>	6
<i>Harmonies</i>	11
<i>Previews</i>	23
<i>Color Blindness Simulation</i>	26
<i>CSS Examples</i>	29

Color

Hex(D9BFB1)

Conversions

Conversions Part 1

Format	Color
Hex	D9BFB1
RGB	217, 191, 177
RGB Percent	85%, 75%, 69%
CMY	0.1490, 0.2510, 0.3059
CMYK	0.00, 0.12, 0.18, 0.15
HSL	21°, 34%, 77%
HSV	21°, 18%, 85%
XYZ	55.1819, 55.1876, 49.3389
YIQ	197.1780, 19.9900, 1.1580

Conversions

Conversions Part 2

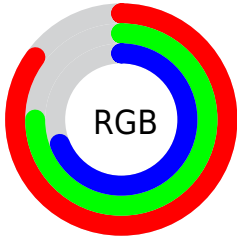
Format	Color
RYB	217, 199, 177
Decimal	14270385
CIELab	79.15, 6.99, 10.43
CIELCh	79, 12.558, 56.182
Yxy	55.1876, 0.3455, 0.3456
Android (android.graphics.Color)	4292460465 (0xFFD9BFB1)
YUV	197.1780, -9.9478, 17.3839
Hunter-Lab	74.2884, 2.5863, 12.6242

Details

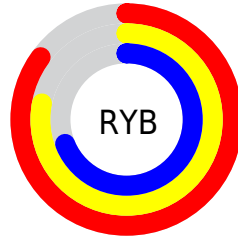
The Hex color **D9BFB1** is a light color, and the websafe version is hex **CCCCCC**. A complement of this color would be **B1CBD9**, and the grayscale version is **C5C5C5**.

A 20% lighter version of the original color is **FFF7E9**, and **A28A7C** is the 20% darker color. If you saturate the color by 10%, you get **D9B19B**, and if you desaturate by 10%, it is **D9CDC7**.

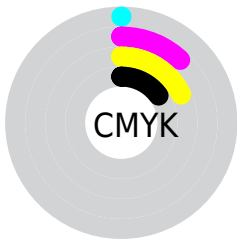
Distribution



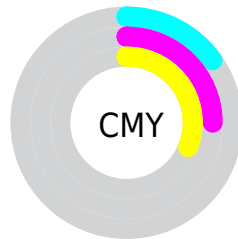
- Red (85%)
- Green (75%)
- Blue (69%)



- Red (85%)
- Yellow (78%)
- Blue (69%)



- Cyan (0%)
- Magenta (12%)
- Yellow (18%)
- Black (15%)



- Cyan (15%)
- Magenta (25%)
- Yellow (31%)

Brightness & Saturation Gradients

These gradients show how the Hex color D9BFB1 changes by changing the brightness by 10 percent. The first figure shows a shift by +10% for each color and the second figure -10%.

Similar to the brightness gradients but the following saturation gradients show a change of the Hex color D9BFB1 by changing the saturation by 10% instead.

 D9BFB1

FFFFFF

 FFF7E9

 D9BFB1

 BDA496

 A28A7C

 877064

 6E584C

 554035

 3D2A20

 271608

 090000

 000000

 D9BFB1

 D9BFB1

 D9B19B

 D9CDC7

 D9A386

 D9DBDC

 D99570

 D9E9F2

 D9875A

 D9F7FF

 D97845

 D9FFFF

 D96A2F

 D95C19

 D94E03

 D94C00

Harmonies

Analogous

The Analogous color harmony consists of three colors that are next to each other on the color wheel.



DDBDBA



D9FBF1



CFC3AD

Triad

The Triadic color harmony groups three colors that are evenly spaced from another and form a triangle on the color wheel.



D9BFB1



ABCBC2



C5C2D9

Complementary

The Complementary color scheme is a pair of colors which are on the opposite of each other on the color wheel.



D9BFB1



B1CBD9

Split Complementary

Split-complementary colors differ from the complementary color scheme. The scheme consists of three colors, the original color and two neighbors of the complement color.



B6C5DB



D9BFB1



A7CBCE

Square

The Square scheme is like the rectangle color scheme, but the four colors are evenly spaced on the color wheel.



D9BFB1



B5C9B7



ABC9D7



D2BED1

Rectangle

The Rectangle color scheme consists of four colors that form a rectangle on the color wheel.



D9BFB1



C7C5AE



ABC9D7



C0C3DA

Sweetspot

The Sweet Spot groups the original color and five complimentary colors.



D9BFB1



FFF5F0



D9B1CB



807A77



000000



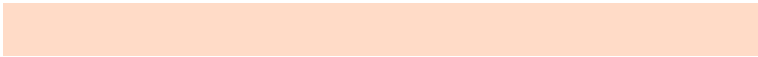
808080

Same Dimension

The Same Dimension uses a secret algorithm to generate beautiful new colors.



D9BFB1



FFDBC7



D9D3B1



6E6763



AD3D00



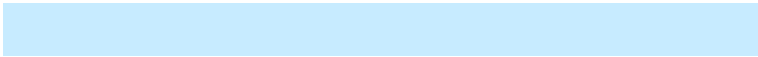
2E1000

Inverse Universe

The Inverse Universe completely reimagines the original color for something new.



B1CBD9



C7EBFF



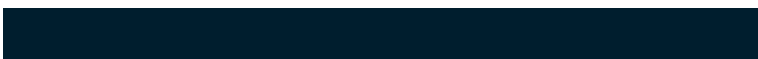
B1B7D9



636A6E



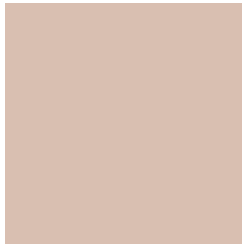
0071AD



001E2E

Previews

White Background



This preview shows how the Hex color D9BFB1 looks on a white background.

Color Contrast Check

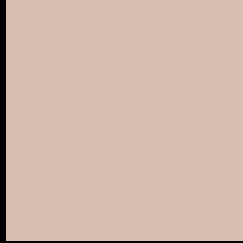
Large Text (above 18pt) WCAG AA × Fail

Any Text WCAG AA × Fail

Large Text (above 18pt) WCAG AAA × Fail

Any Text WCAG AAA × Fail

Black Background



This preview shows how the Hex color D9BFB1 looks on a black background.

Color Contrast Check

Large Text (above 18pt) WCAG AA ✓ Pass

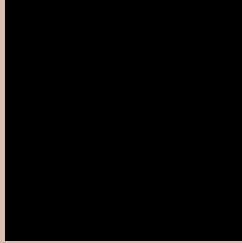
Any Text WCAG AA ✓ Pass

Large Text (above 18pt) WCAG AAA ✓ Pass

Any Text WCAG AAA ✓ Pass

If you want to check with other color combinations, try the [Color Contrast Checker](#).

Hex D9BFB1 Background



This preview shows how black text looks on a background with the Hex color D9BFB1.

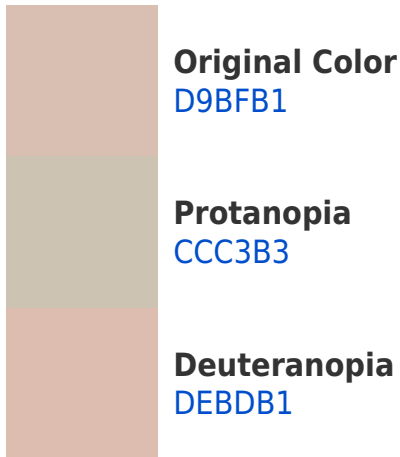


This preview shows how white text looks on a background with the Hex color D9BFB1.

Color Blindness Simulation

Color vision deficiency is a very complex topic, and I could not describe the different causes any better than Wikipedia does, so if you want to learn more, you should check out their [article about color blindness](#).

Dichromacy



Trichromacy



Original Color
D9BFB1

Protanomaly
D1C2B2

Deuteranomaly
DCBEB1

Tritanomaly
DBBCC1

Monochromacy



Original Color
D9BFB1

Achromatopsia
C5C5C5

Achromatomaly
CCC3BE

CSS Examples

Text

The CSS property to change the color of the text to Hex D9BFB1 is called "color". The color property can be set on classes, ids or directly on the HTML element.

This example shows how text in the color #D9BFB1 looks like.

```
.text, #text, p{  
    color:#D9BFB1  
}
```

If you want to add a text shadow in that color use the text-shadow property, you can generate a text shadow directly with our [CSS Text Shadow Generator](#).

Here you see how black text with a 4 pixel #D9BFB1 colored shadow looks like.

```
.shadow{ text-shadow: 4px 4px 2px #D9BFB1
}
```

Border

The CSS property to change the border of an element to Hex D9BFB1 is called "border". The border property can be set on classes, ids or directly on the HTML element.

This example shows the color as border, it can be applied via the CSS property "border" or "border-color".

```
.border, #border, table{ border:4px solid
#D9BFB1 }
```

If only the border color should be changed use the property `border-color`.

```
.border{ border-color:#D9BFB1 }
```

If you want to add a box shadow in that color use:

Here you see how a box with a 4 pixel #D9BFB1 colored shadow looks like.

```
.boxshadow{ -moz-box-shadow:4px 4px 4px  
4px #D9BFB1; -webkit-box-shadow:4px 4px  
4px 4px #D9BFB1; box-shadow:4px 4px 4px  
4px #D9BFB1 }
```

Background

The CSS property to change the background color of an element to Hex D9BFB1 is called "background". The background property can be set on classes, ids or directly on the HTML element.

```
.background, #background, body{  
background:#D9BFB1 }
```

If only the background color should be changed can be used:

```
.background{ background-color:#D9BFB1 }
```

This example shows the color as background, it is applied via the CSS property "background".

To optimize and compress your CSS code, you can use our [online CSS compressor and optimizer](#) based on csstidy. If you want to create a linear or radial gradient as background or border, check our [CSS Gradient Generator](#).

Hey! You found this booklet interesting? Support Converting Colors with the new Membership Option!

The pro membership hides all ads, plus gives you double the colors in the color bucket, and more awesome pro features!

[Learn more, Memberships starting at \\$2.50/m!](#)

**Follow me
on Twitter!**

@ConvertingColor