

Converting Colors

Hex(D9BFCA)

Have a look what the booklet for
Hex(D9BFCA) contains.

Hex(D9BFCA)	3
<i>Conversions</i>	4
<i>Details</i>	6
<i>Harmonies</i>	11
<i>Previews</i>	23
<i>Color Blindness Simulation</i>	26
<i>CSS Examples</i>	29

Color

Hex(D9BFCA)

Conversions

Conversions Part 1

Format	Color
Hex	D9BFCA
RGB	217, 191, 202
RGB Percent	85%, 75%, 79%
CMY	0.1490, 0.2510, 0.2078
CMYK	0.00, 0.12, 0.07, 0.15
HSL	335°, 25%, 80%
HSV	335°, 12%, 85%
XYZ	57.9067, 56.2776, 63.6878
YIQ	200.0280, 11.9650, 8.9330

Conversions

Conversions Part 2

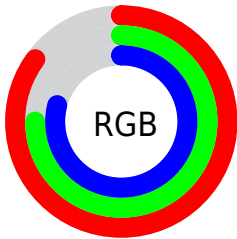
Format	Color
R _{YB}	217, 191, 202
Decimal	14270410
CIE _{Lab}	79.77, 11.06, -2.14
CIE _{LCh}	80, 11.267, 349.062
Yxy	56.2776, 0.3256, 0.3164
Android (android.graphics.Color)	4292460490 (0xFFD9BFCA)
YUV	200.0280, 0.9722, 14.8844
Hunter-Lab	75.0184, 6.5021, 2.1779

Details

The Hex color **D9BFCA** is a light color, and the websafe version is hex **CCCCCC**. A complement of this color would be **BFD9CE**, and the grayscale version is **C8C8C8**.

A 20% lighter version of the original color is **FFF7FF**, and **A28A94** is the 20% darker color. If you saturate the color by 10%, you get **D9A9BD**, and if you desaturate by 10%, it is **D9D5D7**.

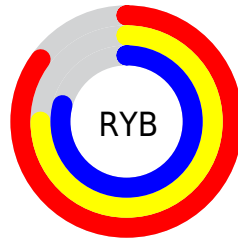
Distribution



Red (85%)

Green (75%)

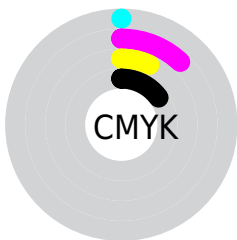
Blue (79%)



Red (85%)

Yellow (75%)

Blue (79%)

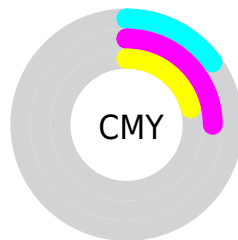


Cyan (0%)

Magenta (12%)

Yellow (7%)

Black (15%)



Cyan (15%)

Magenta (25%)

Yellow (21%)

Brightness & Saturation Gradients

These gradients show how the Hex color D9BFCA changes by changing the brightness by 10 percent. The first figure shows a shift by +10% for each color and the second figure -10%.

Similar to the brightness gradients but the following saturation gradients show a change of the Hex color D9BFCA by changing the saturation by 10% instead.

 D9BFCA

 D9BFCA

FFFFFF

 BDA4AF

 FFF7FF

 A28A94

 88707A

 6E5861

 56404A

 3E2A33

 28151E

 150005

 000000

 D9BFCA

 D9BFCA

 D9A9BD

 D9D5D7

 D994B1

 D9EAE3

 D97EA4

 D9FFF0

 D96898

 D9FFFC

 D9528B

 D9FFFF

 D93D7F

 D92772

 D91166

 D9005C

Harmonies

Analogous

The Analogous color harmony consists of three colors that are next to each other on the color wheel.



D0C1D4



D9BFCA



DDBFBF

Triad

The Triadic color harmony groups three colors that are evenly spaced from another and form a triangle on the color wheel.



D9BFCA



C7C7B2



AECBD5

Complementary

The Complementary color scheme is a pair of colors which are on the opposite of each other on the color wheel.



D9BFCA



BFD9CE

Split Complementary

Split-complementary colors differ from the complementary color scheme. The scheme consists of three colors, the original color and two neighbors of the complement color.



ACCCCC



D9BFCA



BBCAB8

Square

The Square scheme is like the rectangle color scheme, but the four colors are evenly spaced on the color wheel.



D9BFCA



D2C4B1



B1CCC1



B6C8DA

Rectangle

The Rectangle color scheme consists of four colors that form a rectangle on the color wheel.



D9BFCA



DCC0B9



B1CCC1



ACCBD3

Sweetspot

The Sweet Spot groups the original color and five complimentary colors.



D9BFCA



FFF5F9



CEBFD9



80797C



000000



808080

Same Dimension

The Same Dimension uses a secret algorithm to generate beautiful new colors.



D9BFCA



FFDBEA



D9C1BF



6E6367



AD0049



2E0013

Inverse Universe

The Inverse Universe completely reimagines the original color for something new.



D9BFCA



FFDBEA



BFD7D9



6E6367



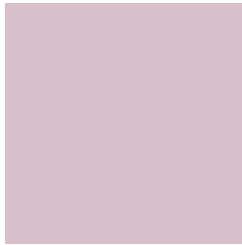
AD0049



2E0013

Previews

White Background



This preview shows how the Hex color D9BFCA looks on a white background.

Color Contrast Check

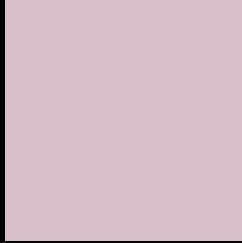
Large Text (above 18pt) WCAG AA × Fail

Any Text WCAG AA × Fail

Large Text (above 18pt) WCAG AAA × Fail

Any Text WCAG AAA × Fail

Black Background



This preview shows how the Hex color D9BFCA looks on a black background.

Color Contrast Check

Large Text (above 18pt) WCAG AA ✓ Pass

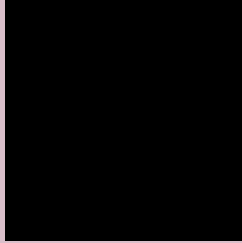
Any Text WCAG AA ✓ Pass

Large Text (above 18pt) WCAG AAA ✓ Pass

Any Text WCAG AAA ✓ Pass

If you want to check with other color combinations, try the [Color Contrast Checker](#).

Hex D9BFCA Background



This preview shows how black text looks on a background with the Hex color D9BFCA.

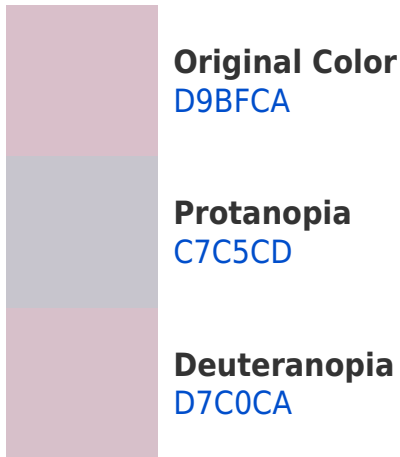



This preview shows how white text looks on a background with the Hex color D9BFCA.

Color Blindness Simulation

Color vision deficiency is a very complex topic, and I could not describe the different causes any better than Wikipedia does, so if you want to learn more, you should check out their [article about color blindness](#).

Dichromacy





Tritanopia
D9BECD

Trichromacy



Original Color
D9BFCA

Protanomaly
CEC3CC

Deuteranomaly
D8C0CA

Tritanomaly
D9BECC

Monochromacy



Original Color
D9BFCA

Achromatopsia
C8C8C8

Achromatomaly
CEC5C9

CSS Examples

Text

The CSS property to change the color of the text to Hex D9BFCA is called "color". The color property can be set on classes, ids or directly on the HTML element.

This example shows how text in the color #D9BFCA looks like.

```
.text, #text, p{  
    color:#D9BFCA  
}
```

If you want to add a text shadow in that color use the text-shadow property, you can generate a text shadow directly with our [CSS Text Shadow Generator](#).

Here you see how black text with a 4 pixel #D9BFCA colored shadow looks like.

```
.shadow{ text-shadow: 4px 4px 2px #D9BFCA
}
```

Border

The CSS property to change the border of an element to Hex D9BFCA is called "border". The border property can be set on classes, ids or directly on the HTML element.

This example shows the color as border, it can be applied via the CSS property "border" or "border-color".

```
.border, #border, table{ border:4px solid
#D9BFCA }
```

If only the border color should be changed use the property `border-color`.

```
.border{ border-color:#D9BFCA }
```

If you want to add a box shadow in that color use:

Here you see how a box with a 4 pixel #D9BFCA colored shadow looks like.

```
.boxshadow{ -moz-box-shadow:4px 4px 4px  
4px #D9BFCA; -webkit-box-shadow:4px 4px  
4px 4px #D9BFCA; box-shadow:4px 4px 4px  
4px #D9BFCA }
```

Background

The CSS property to change the background color of an element to Hex D9BFCA is called "background". The background property can be set on classes, ids or directly on the HTML element.

```
.background, #background, body{  
background:#D9BFCA }
```

If only the background color should be changed can be used:

```
.background{ background-color:#D9BFCA }
```

This example shows the color as background, it is applied via the CSS property "background".

To optimize and compress your CSS code, you can use our [online CSS compressor and optimizer](#) based on csstidy. If you want to create a linear or radial gradient as background or border, check our [CSS Gradient Generator](#).

Hey! You found this booklet interesting? Support Converting Colors with the new Membership Option!

The pro membership hides all ads, plus gives you double the colors in the color bucket, and more awesome pro features!

[Learn more, Memberships starting at \\$2.50/m!](#)

**Follow me
on Twitter!**

@ConvertingColor