

# Converting Colors

Hex(D9C0BC)

Have a look what the booklet for  
Hex(D9C0BC) contains.

<b>Hex(D9C0BC)</b> .....	3
<b><i>Conversions</i></b> .....	4
<b><i>Details</i></b> .....	6
<b><i>Harmonies</i></b> .....	11
<b><i>Previews</i></b> .....	23
<b><i>Color Blindness Simulation</i></b> .....	26
<b><i>CSS Examples</i></b> .....	29

# **Color**

**Hex(D9C0BC)**

# Conversions

## Conversions Part 1

<b>Format</b>	<b>Color</b>
Hex	D9C0BC
RGB	217, 192, 188
RGB Percent	85%, 75%, 74%
CMY	0.1490, 0.2471, 0.2627
CMYK	0.00, 0.12, 0.13, 0.15
HSL	8°, 28%, 79%
HSV	8°, 13%, 85%
XYZ	56.5420, 56.0818, 55.4217
YIQ	199.0190, 16.1840, 4.0560

# Conversions

## Conversions Part 2

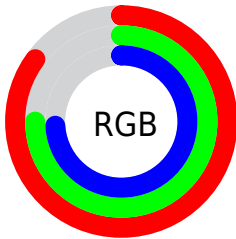
Format	Color
R <sub>Y</sub> B	217, 193, 188
Decimal	14270652
CIE Lab	79.66, 8.19, 5.24
CIE LCh	80, 9.721, 32.649
Yxy	56.0818, 0.3365, 0.3337
Android (android.graphics.Color)	4292460732 (0xFFD9C0BC)
YUV	199.0190, -5.4324, 15.7693
Hunter-Lab	74.8878, 3.7179, 8.5431

# Details

The Hex color **D9C0BC** is a light color, and the websafe version is hex **CCCCCC**. A complement of this color would be **BCD5D9**, and the grayscale version is **C7C7C7**.

A 20% lighter version of the original color is **FFF8F4**, and **A28B87** is the 20% darker color. If you saturate the color by 10%, you get **D9ADA6**, and if you desaturate by 10%, it is **D9D3D2**.

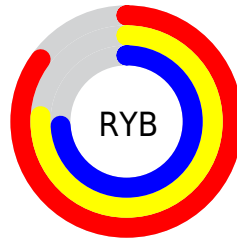
# Distribution



Red (85%)

Green (75%)

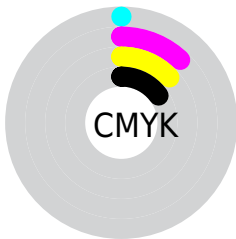
Blue (74%)



Red (85%)

Yellow (76%)

Blue (74%)

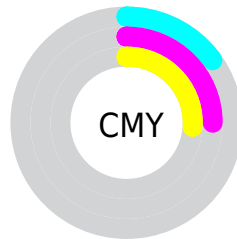


Cyan (0%)

Magenta (12%)

Yellow (13%)

Black (15%)



Cyan (15%)

Magenta (25%)

Yellow (26%)

# Brightness & Saturation Gradients

These gradients show how the Hex color D9C0BC changes by changing the brightness by 10 percent. The first figure shows a shift by +10% for each color and the second figure -10%.

Similar to the brightness gradients but the following saturation gradients show a change of the Hex color D9C0BC by changing the saturation by 10% instead.



 D9C0BC

FFFFFF

 FFF8F4

 D9C0BC

 BDA5A1

 A28B87

 88716E

 6E5955

 55413E

 3E2B28

 271614

 100000

 000000

 D9C0BC

 D9C0BC

 D9ADA6

 D9D3D2

 D99B91

 D9E5E7

 D9887B

 D9F8FD

 D97565

 D9FFFF

 D96250

 D9503A

 D93D24

 D92A0E

 D91E00

# Harmonies

## Analogous

The Analogous color harmony consists of three colors that are next to each other on the color wheel.



D8BFC5



D9C0BC



D5C2B6

# Triad

The Triadic color harmony groups three colors that are evenly spaced from another and form a triangle on the color wheel.



D9C0BC



B8CABD



BDC6D7

# Complementary

The Complementary color scheme is a pair of colors which are on the opposite of each other on the color wheel.



D9C0BC



BCD5D9

# Split Complementary

Split-complementary colors differ from the complementary color scheme. The scheme consists of three colors, the original color and two neighbors of the complement color.



B4C9D5



D9C0BC



B1CBC6

# Square

The Square scheme is like the rectangle color scheme, but the four colors are evenly spaced on the color wheel.



D9C0BC



C2C8B6



AFCACF



C8C3D5

# Rectangle

The Rectangle color scheme consists of four colors that form a rectangle on the color wheel.



D9C0BC



CFC4B4



AFCACF



BAC7D7



# Sweetspot

The Sweet Spot groups the original color and five complimentary colors.



D9C0BC



FFF6F5



D9BCD5



807A79



000000



808080

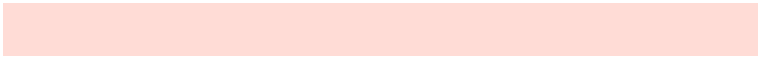


# Same Dimension

The Same Dimension uses a secret algorithm to generate beautiful new colors.



D9C0BC



FFDCD6



D9CEBC



6E6463



AD1800



2E0600

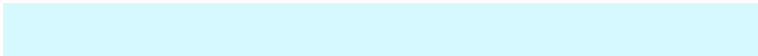


# Inverse Universe

The Inverse Universe completely reimagines the original color for something new.



BCD5D9



D6F9FF



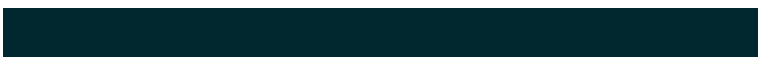
BCC7D9



636C6E



0095AD

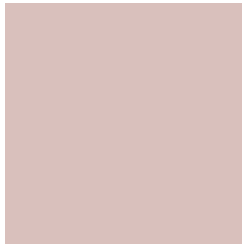


00282E



# Previews

## White Background



This preview shows how the Hex color D9C0BC looks on a white background.

## Color Contrast Check

Large Text (above 18pt) WCAG AA × Fail

Any Text WCAG AA × Fail

Large Text (above 18pt) WCAG AAA × Fail

Any Text WCAG AAA × Fail

# Black Background



This preview shows how the Hex color D9C0BC looks on a black background.

## Color Contrast Check

Large Text (above 18pt) WCAG AA ✓ Pass

Any Text WCAG AA ✓ Pass

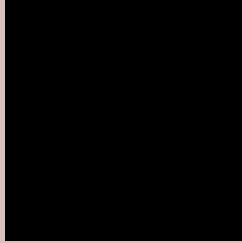
Large Text (above 18pt) WCAG AAA ✓ Pass

Any Text WCAG AAA ✓ Pass

If you want to check with other color combinations, try the [Color Contrast Checker](#).



## Hex D9C0BC Background



This preview shows how black text looks on a background with the Hex color D9C0BC.



This preview shows how white text looks on a background with the Hex color D9C0BC.

# Color Blindness Simulation

Color vision deficiency is a very complex topic, and I could not describe the different causes any better than Wikipedia does, so if you want to learn more, you should check out their [article about color blindness](#).

## Dichromacy





# Trichromacy



**Original Color**  
D9C0BC

**Protanomaly**  
D0C3BE

**Deuteranomaly**  
DBBFBC

**Tritanomaly**  
DABFC6

# Monochromacy



**Original Color**  
D9C0BC

**Achromatopsia**  
C7C7C7

**Achromatomaly**  
CEC4C3

# CSS Examples

## Text

The CSS property to change the color of the text to Hex D9C0BC is called "color". The color property can be set on classes, ids or directly on the HTML element.

This example shows how text in the color #D9C0BC looks like.

```
.text, #text, p{  
  color:#D9C0BC  
}
```

If you want to add a text shadow in that color use the text-shadow property, you can generate a text shadow directly with our [CSS Text Shadow Generator](#).

Here you see how black text with a 4 pixel #D9C0BC colored shadow looks like.

```
.shadow{ text-shadow: 4px 4px 2px #D9C0BC }  
}
```

## Border

The CSS property to change the border of an element to Hex D9C0BC is called "border". The border property can be set on classes, ids or directly on the HTML element.

This example shows the color as border, it can be applied via the CSS property "border" or "border-color".

```
.border, #border, table{ border:4px solid #D9C0BC }  
}
```

If only the border color should be changed use the property `border-color`.

```
.border{ border-color:#D9C0BC }
```

If you want to add a box shadow in that color use:

Here you see how a box with a 4 pixel #D9C0BC colored shadow looks like.

```
.boxshadow{ -moz-box-shadow:4px 4px 4px  
4px #D9C0BC; -webkit-box-shadow:4px 4px  
4px 4px #D9C0BC; box-shadow:4px 4px 4px  
4px #D9C0BC }
```

# Background

The CSS property to change the background color of an element to Hex D9C0BC is called "background". The background property can be set on classes, ids or directly on the HTML element.

```
.background, #background, body{  
background:#D9C0BC }
```

If only the background color should be changed can be used:

```
.background{ background-color:#D9C0BC }
```

This example shows the color as background, it is applied via the CSS property "background".

To optimize and compress your CSS code, you can use our [online CSS compressor and optimizer](#) based on csstidy. If you want to create a linear or radial gradient as background or border, check our [CSS Gradient Generator](#).



Hey! You found this booklet interesting? Support Converting Colors with the new Membership Option!

The pro membership hides all ads, plus gives you double the colors in the color bucket, and more awesome pro features!

**[Learn more, Memberships starting at \\$2.50/m!](#)**

**Follow me  
on Twitter!**

@ConvertingColor