

Converting Colors

Hex(D9C1CA)

Have a look what the booklet for
Hex(D9C1CA) contains.

Hex(D9C1CA)	3
<i>Conversions</i>	4
<i>Details</i>	6
<i>Harmonies</i>	11
<i>Previews</i>	23
<i>Color Blindness Simulation</i>	26
<i>CSS Examples</i>	29

Color

Hex(D9C1CA)

Conversions

Conversions Part 1

Format	Color
Hex	D9C1CA
RGB	217, 193, 202
RGB Percent	85%, 76%, 79%
CMY	0.1490, 0.2431, 0.2078
CMYK	0.00, 0.11, 0.07, 0.15
HSL	338°, 24%, 80%
HSV	338°, 11%, 85%
XYZ	58.3459, 57.1559, 63.8341
YIQ	201.2020, 11.4150, 7.8870

Conversions

Conversions Part 2

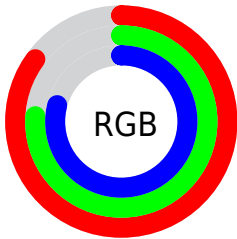
Format	Color
R _Y B	217, 193, 202
Decimal	14270922
CIE Lab	80.27, 9.99, -1.41
CIE LCh	80, 10.094, 351.963
Yxy	57.1559, 0.3253, 0.3187
Android (android.graphics.Color)	4292461002 (0xFFD9C1CA)
YUV	201.2020, 0.3934, 13.8548
Hunter-Lab	75.6015, 5.4557, 2.8596

Details

The Hex color **D9C1CA** is a light color, and the websafe version is hex **CCCCCC**. A complement of this color would be **C1D9D0**, and the grayscale version is **C9C9C9**.

A 20% lighter version of the original color is **FFF9FF**, and **A28B94** is the 20% darker color. If you saturate the color by 10%, you get **D9ABBC**, and if you desaturate by 10%, it is **D9D7D8**.

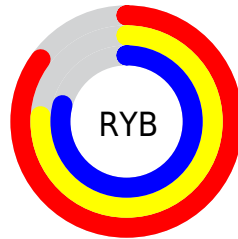
Distribution



Red (85%)

Green (76%)

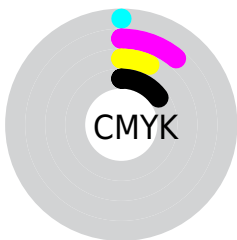
Blue (79%)



Red (85%)

Yellow (76%)

Blue (79%)

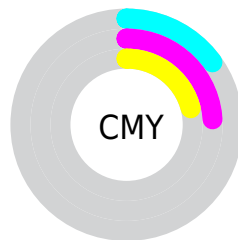


Cyan (0%)

Magenta (11%)

Yellow (7%)

Black (15%)



Cyan (15%)

Magenta (24%)

Yellow (21%)

Brightness & Saturation Gradients

These gradients show how the Hex color D9C1CA changes by changing the brightness by 10 percent. The first figure shows a shift by +10% for each color and the second figure -10%.

Similar to the brightness gradients but the following saturation gradients show a change of the Hex color D9C1CA by changing the saturation by 10% instead.

 D9C1CA

 D9C1CA

FFFFFF

 BDA6AF

 FFF9FF

 A28B94

 88727A

 6E5961

 56424A

 3E2C33

 28171E

 150005

 000000

 D9C1CA

 D9C1CA

 D9ABBC

 D9D7D8

 D996AF

 D9ECE5

 D980A1

 D9FFF3

 D96A94

 D9FFFF

 D95586

 D93F79

 D9296B

 D9135E

 D90051

Harmonies

Analogous

The Analogous color harmony consists of three colors that are next to each other on the color wheel.



D1C3D3



D9C1CA



DCC1C0

Triad

The Triadic color harmony groups three colors that are evenly spaced from another and form a triangle on the color wheel.



D9C1CA



C7C9B6



B2CBD6

Complementary

The Complementary color scheme is a pair of colors which are on the opposite of each other on the color wheel.



D9C1CA



C1D9D0

Split Complementary

Split-complementary colors differ from the complementary color scheme. The scheme consists of three colors, the original color and two neighbors of the complement color.



B0CDCE



D9C1CA



BDCBBB

Square

The Square scheme is like the rectangle color scheme, but the four colors are evenly spaced on the color wheel.



D9C1CA



D2C6B5



B4CDC4



BBC9D9

Rectangle

The Rectangle color scheme consists of four colors that form a rectangle on the color wheel.



D9C1CA



DBC2BB



B4CDC4



B1CCD3

Sweetspot

The Sweet Spot groups the original color and five complimentary colors.



D9C1CA



FFF7FA



D0C1D9



807A7C



000000



808080

Same Dimension

The Same Dimension uses a secret algorithm to generate beautiful new colors.



D9C1CA



FFDEEA



D9C4C1



6E6367



AD0041



2E0011

Inverse Universe

The Inverse Universe completely reimagines the original color for something new.



D9C1CA



FFDEEA



C1D6D9



6E6367



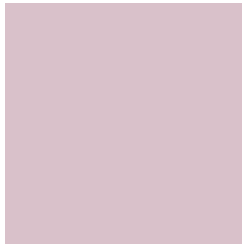
AD0041



2E0011

Previews

White Background



This preview shows how the Hex color D9C1CA looks on a white background.

Color Contrast Check

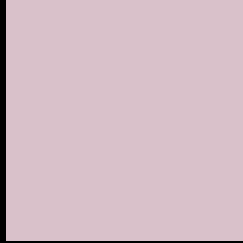
Large Text (above 18pt) WCAG AA × Fail

Any Text WCAG AA × Fail

Large Text (above 18pt) WCAG AAA × Fail

Any Text WCAG AAA × Fail

Black Background



This preview shows how the Hex color D9C1CA looks on a black background.

Color Contrast Check

Large Text (above 18pt) WCAG AA ✓ Pass

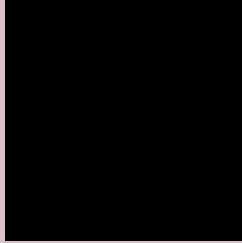
Any Text WCAG AA ✓ Pass

Large Text (above 18pt) WCAG AAA ✓ Pass

Any Text WCAG AAA ✓ Pass

If you want to check with other color combinations, try the [Color Contrast Checker](#).

Hex D9C1CA Background



This preview shows how black text looks on a background with the Hex color D9C1CA.

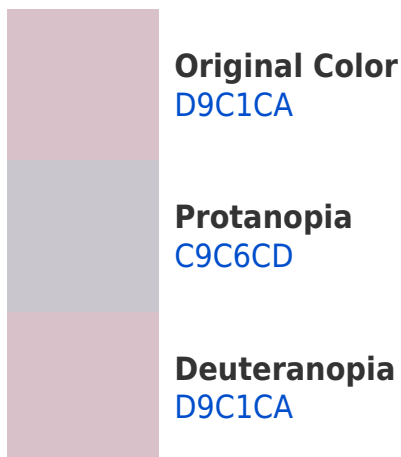


This preview shows how white text looks on a background with the Hex color D9C1CA.

Color Blindness Simulation

Color vision deficiency is a very complex topic, and I could not describe the different causes any better than Wikipedia does, so if you want to learn more, you should check out their [article about color blindness](#).

Dichromacy



Trichromacy



Original Color
D9C1CA

Protanomaly
CFC4CC

Deuteranomaly
D9C1CA

Tritanomaly
DAC0CD

Monochromacy



Original Color
D9C1CA

Achromatopsia
C9C9C9

Achromatomaly
CFC6C9

CSS Examples

Text

The CSS property to change the color of the text to Hex D9C1CA is called "color". The color property can be set on classes, ids or directly on the HTML element.

This example shows how text in the color #D9C1CA looks like.

```
.text, #text, p{  
    color:#D9C1CA  
}
```

If you want to add a text shadow in that color use the text-shadow property, you can generate a text shadow directly with our [CSS Text Shadow Generator](#).

Here you see how black text with a 4 pixel #D9C1CA colored shadow looks like.

```
.shadow{ text-shadow: 4px 4px 2px #D9C1CA
}
```

Border

The CSS property to change the border of an element to Hex D9C1CA is called "border". The border property can be set on classes, ids or directly on the HTML element.

This example shows the color as border, it can be applied via the CSS property "border" or "border-color".

```
.border, #border, table{ border:4px solid
#D9C1CA }
```

If only the border color should be changed use the property `border-color`.

```
.border{ border-color:#D9C1CA }
```

If you want to add a box shadow in that color use:

Here you see how a box with a 4 pixel #D9C1CA colored shadow looks like.

```
.boxshadow{ -moz-box-shadow:4px 4px 4px  
4px #D9C1CA; -webkit-box-shadow:4px 4px  
4px 4px #D9C1CA; box-shadow:4px 4px 4px  
4px #D9C1CA }
```

Background

The CSS property to change the background color of an element to Hex D9C1CA is called "background". The background property can be set on classes, ids or directly on the HTML element.

```
.background, #background, body{  
background:#D9C1CA }
```

If only the background color should be changed can be used:

```
.background{ background-color:#D9C1CA }
```

This example shows the color as background, it is applied via the CSS property "background".

To optimize and compress your CSS code, you can use our [online CSS compressor and optimizer](#) based on csstidy. If you want to create a linear or radial gradient as background or border, check our [CSS Gradient Generator](#).

Hey! You found this booklet interesting? Support Converting Colors with the new Membership Option!

The pro membership hides all ads, plus gives you double the colors in the color bucket, and more awesome pro features!

[Learn more, Memberships starting at \\$2.50/m!](#)

**Follow me
on Twitter!**

@ConvertingColor